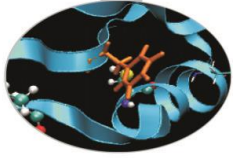
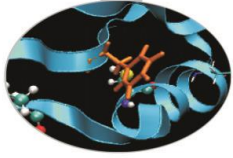


Outline



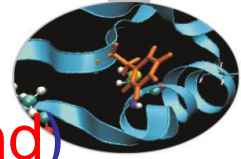
- MARCONI: Sanity checks launched during maintenance on August and September (linpack, stream, multi-node linpack)
- MARCONI100: Sanity checks on GPU (dgemm, stream, nvlink, p2p) during maintenance on August

MARCONI – August 2021

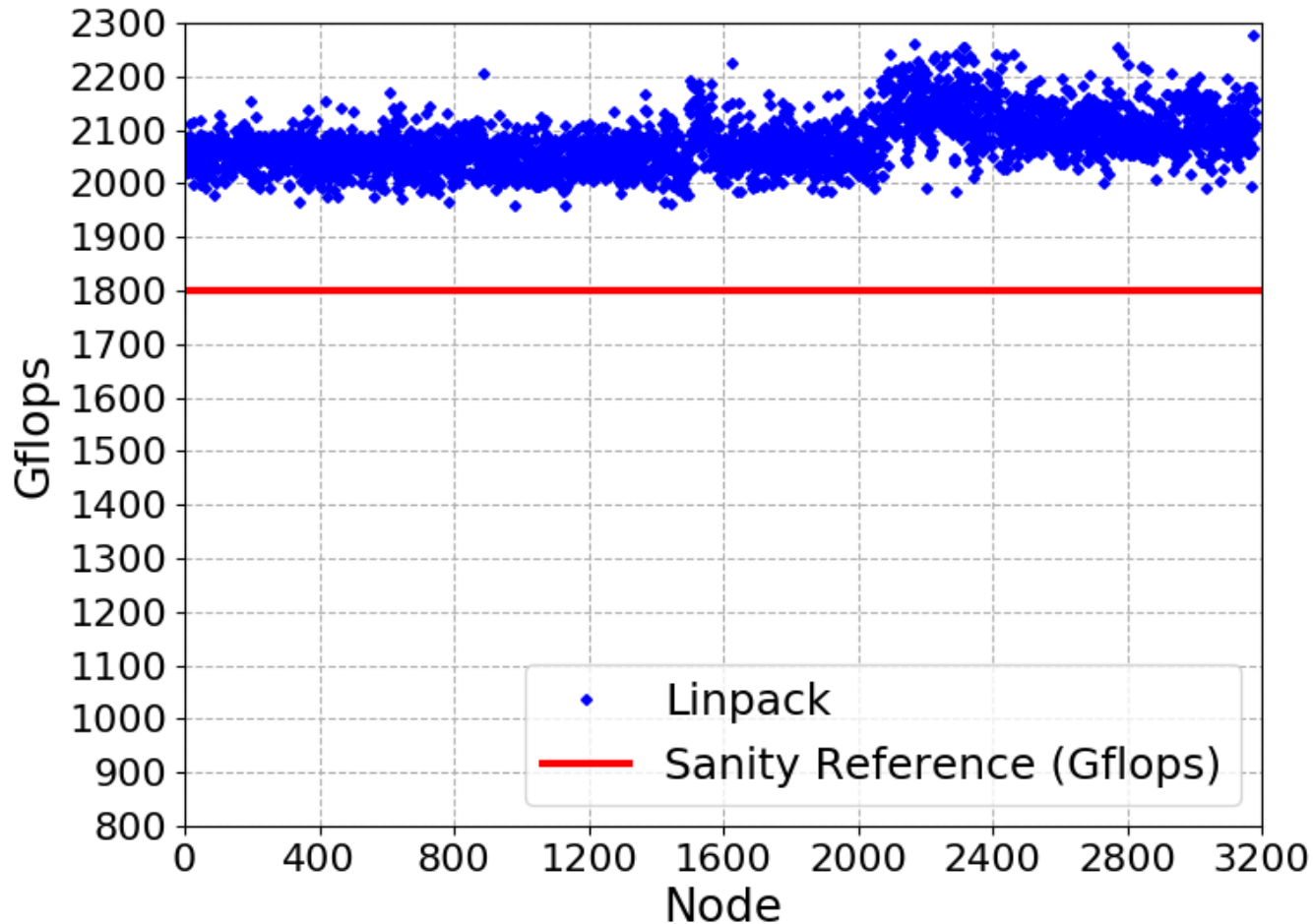


- Tests were performed during maintenance on August 10th
- Tests: lincpack and stream on each single node of SKL
- Switch-level Lincpack tests were performed during maintenance
- Slow nodes have been removed from production for investigation and fixes

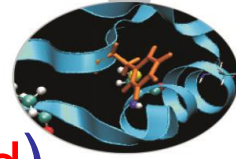
Linpack SKL



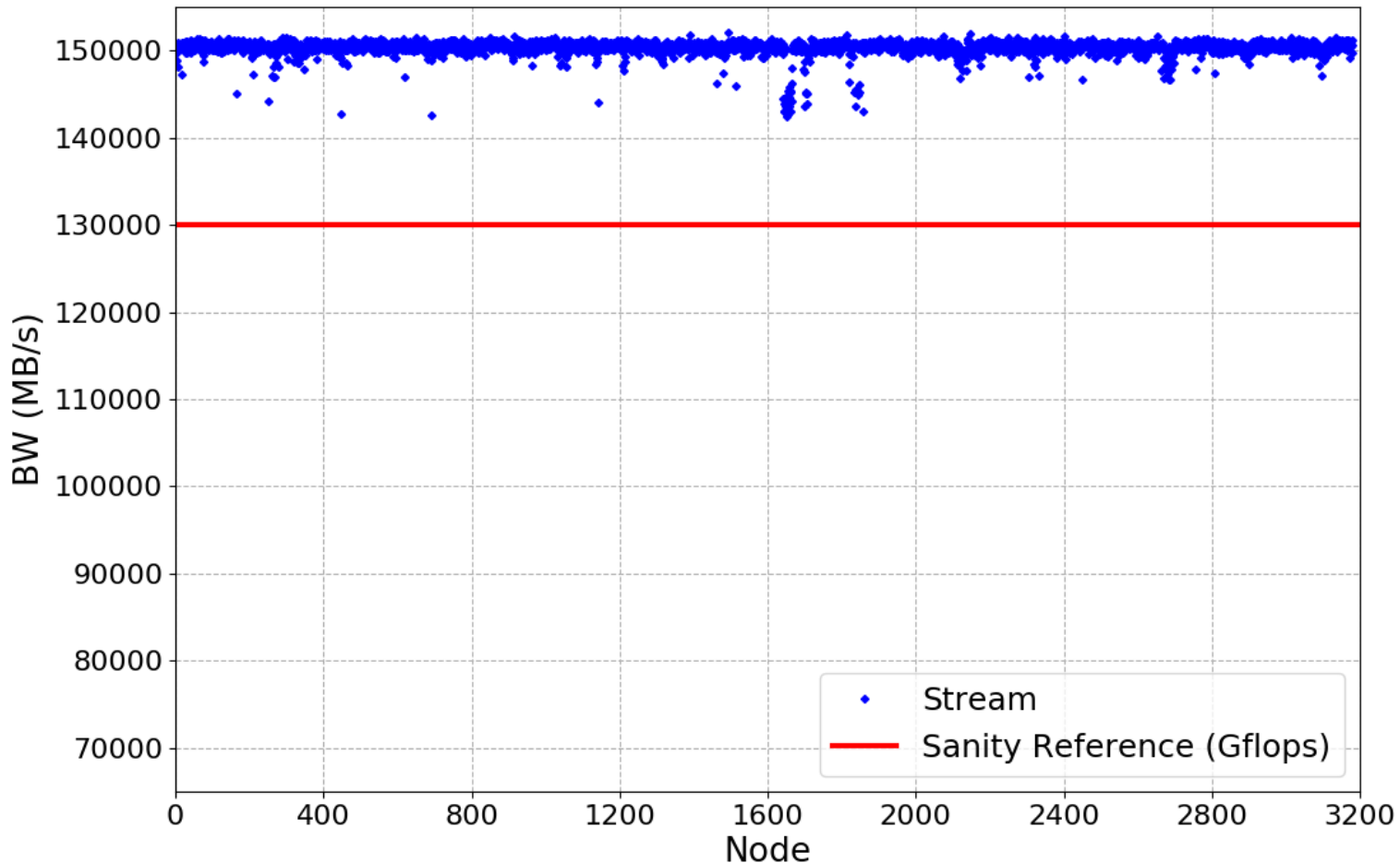
- Sanity threshold: 1800 Gflops (no slow nodes found)



Stream SKL



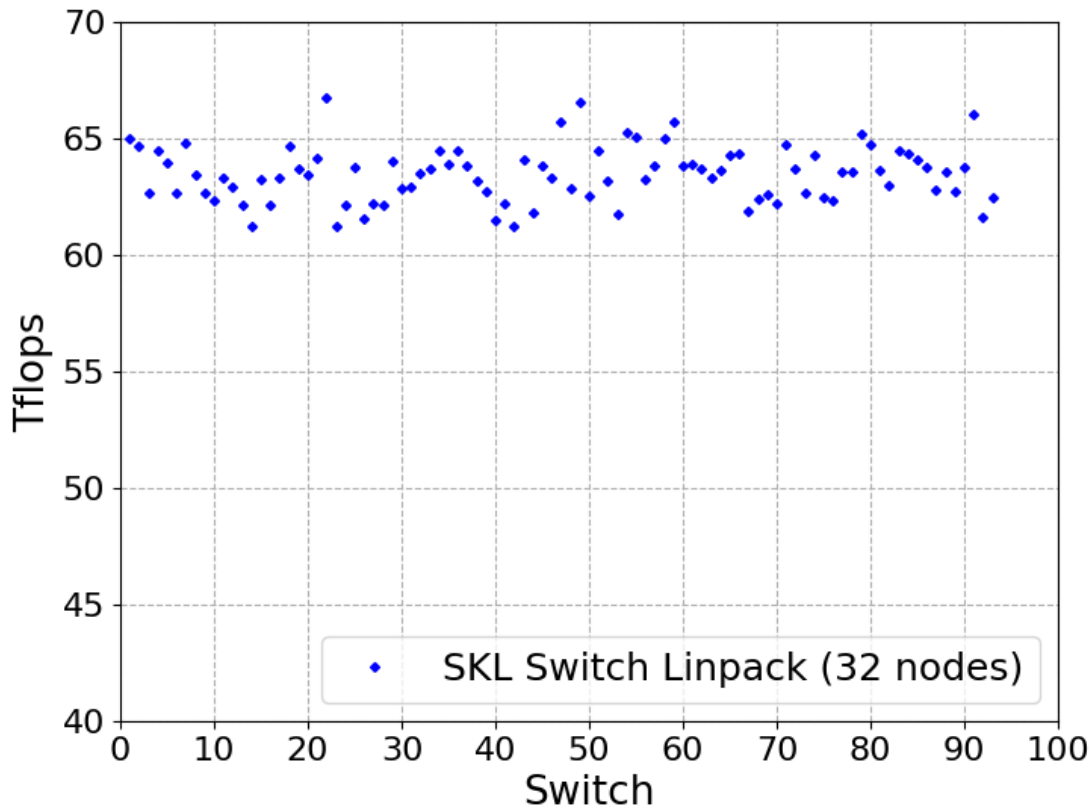
- Sanity threshold: 130000 MB/s (no slow nodes found)



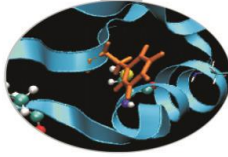


Switch-level Linpack SKL

- 93 switches tested
- Overall stable performance, no switch with problems

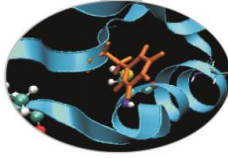


MARCONI – September 2021

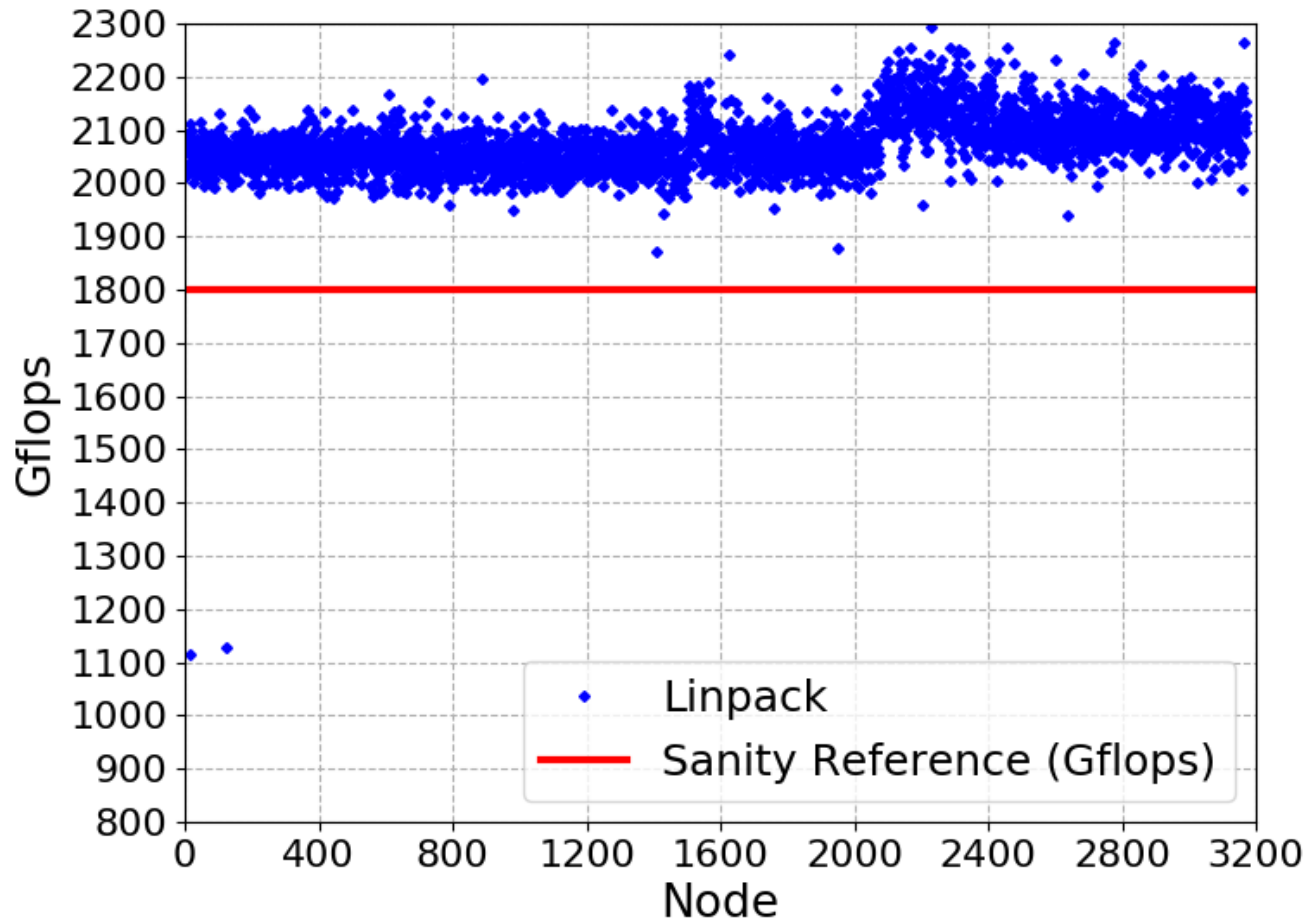


- Tests were performed during maintenance on September 9th
- Tests: lincpack and stream on each single node of SKL
- Switch-level Lincpack tests were performed during maintenance
- Slow nodes have been removed from production for investigation and fixes

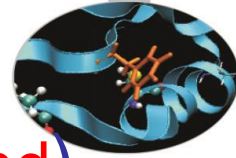
Linpack SKL



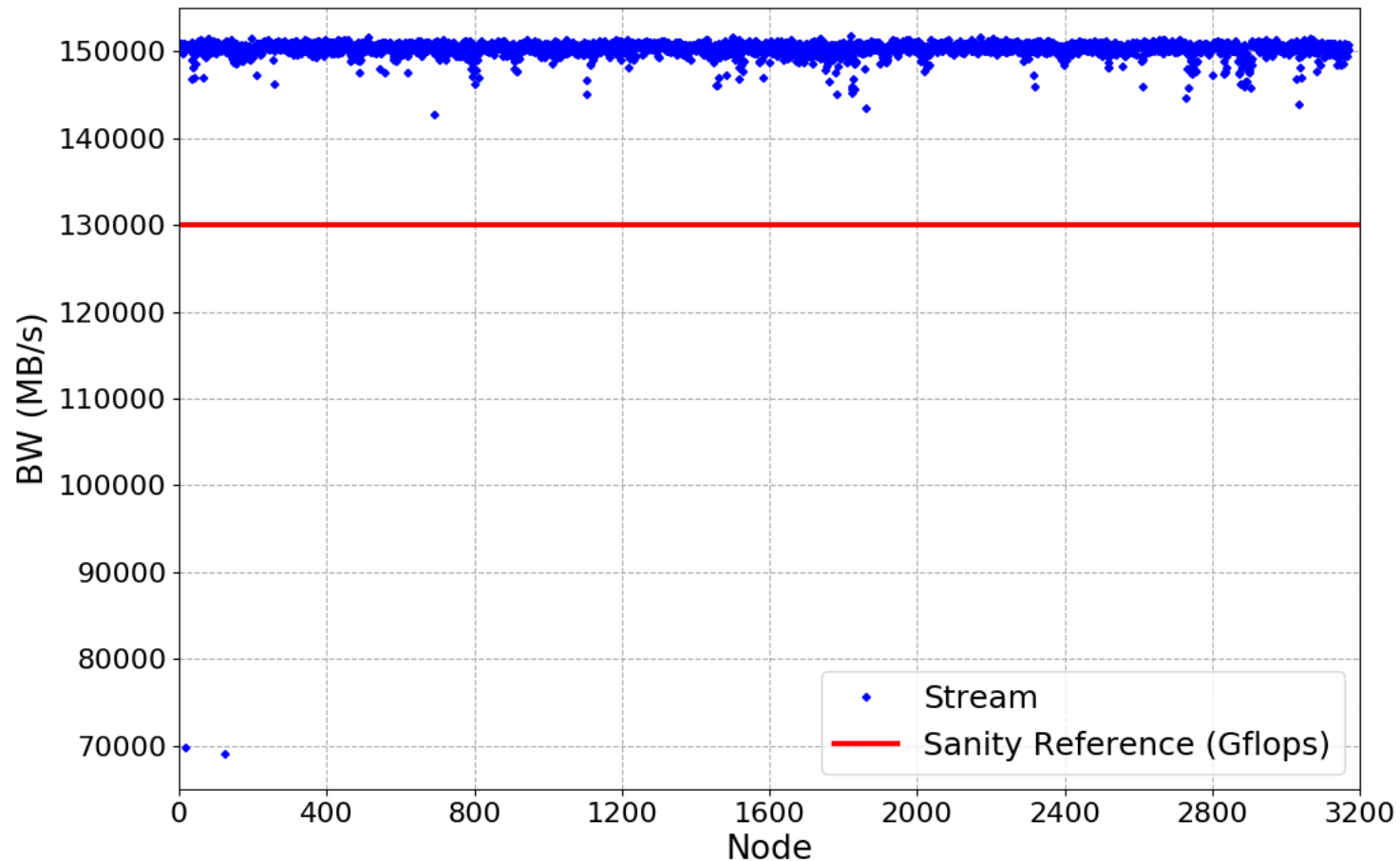
- Sanity threshold: 1800 Gflops (two slow nodes found)



Stream SKL



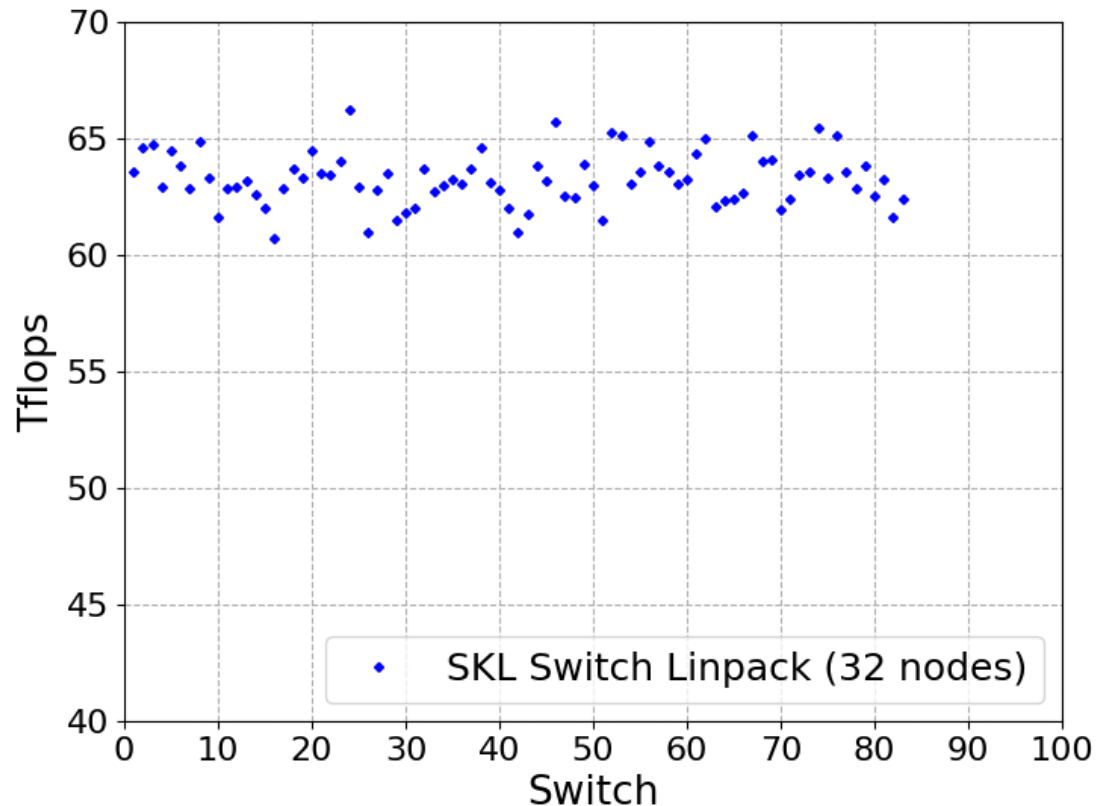
- Sanity threshold: 130000 MB/s (two slow nodes found)



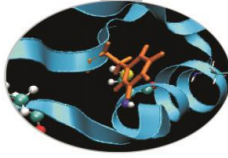


Switch-level Linpack SKL

- 85 switches tested
- Overall stable performance, no switch with problems (the bad nodes were already drained)

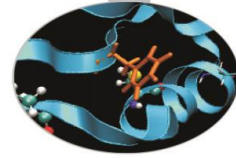


MARCONI100 – August 2021

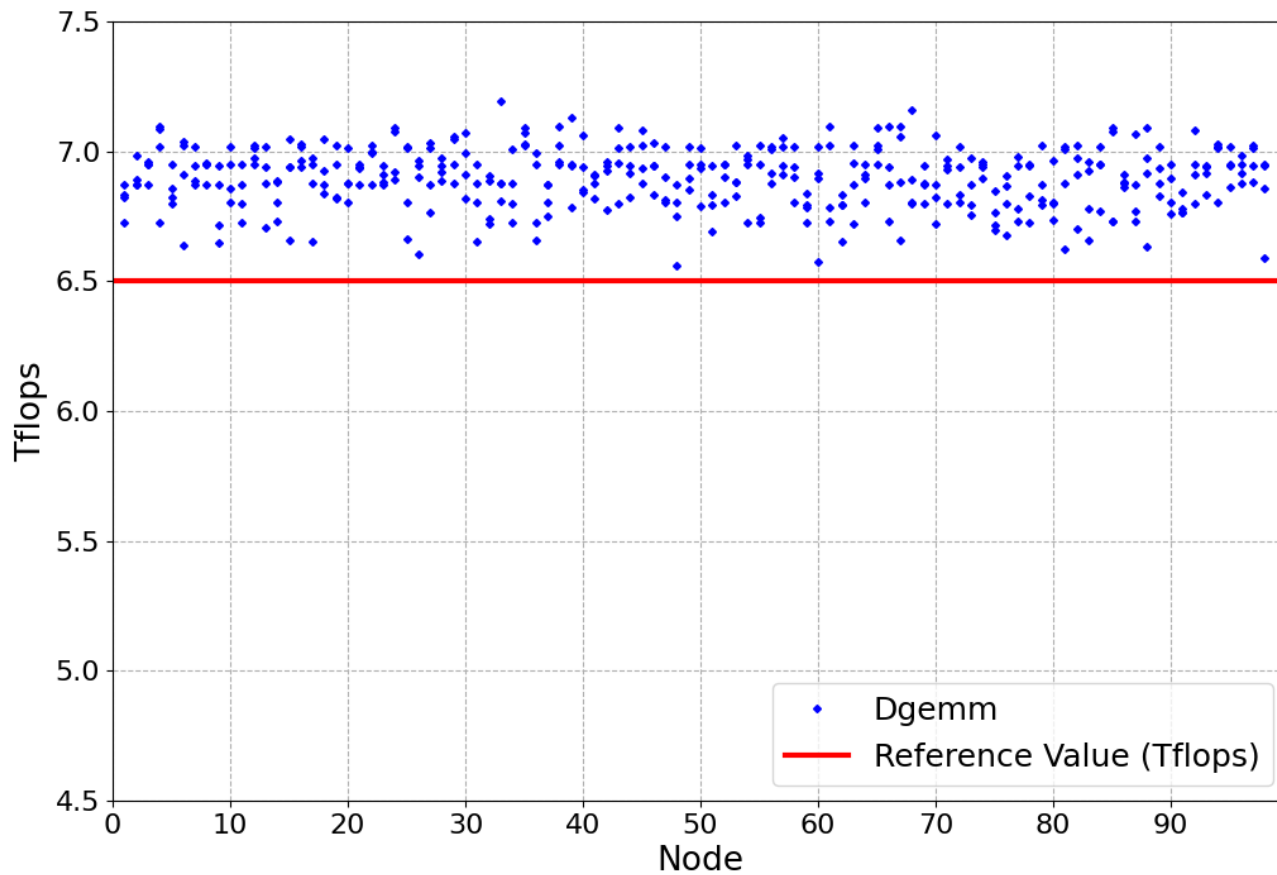


- Sanity checks were performed during maintenance on August 24th
- Tests: dgemm, stream-GPU, nvlink and p2p on each single node of M100
- Results from the nodes of EUROFusion partition are shown
- Pre-maintenance and post-maintenance checks were performed, as an accorded test

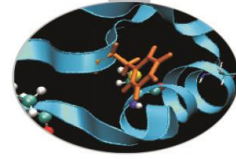
Dgemmm



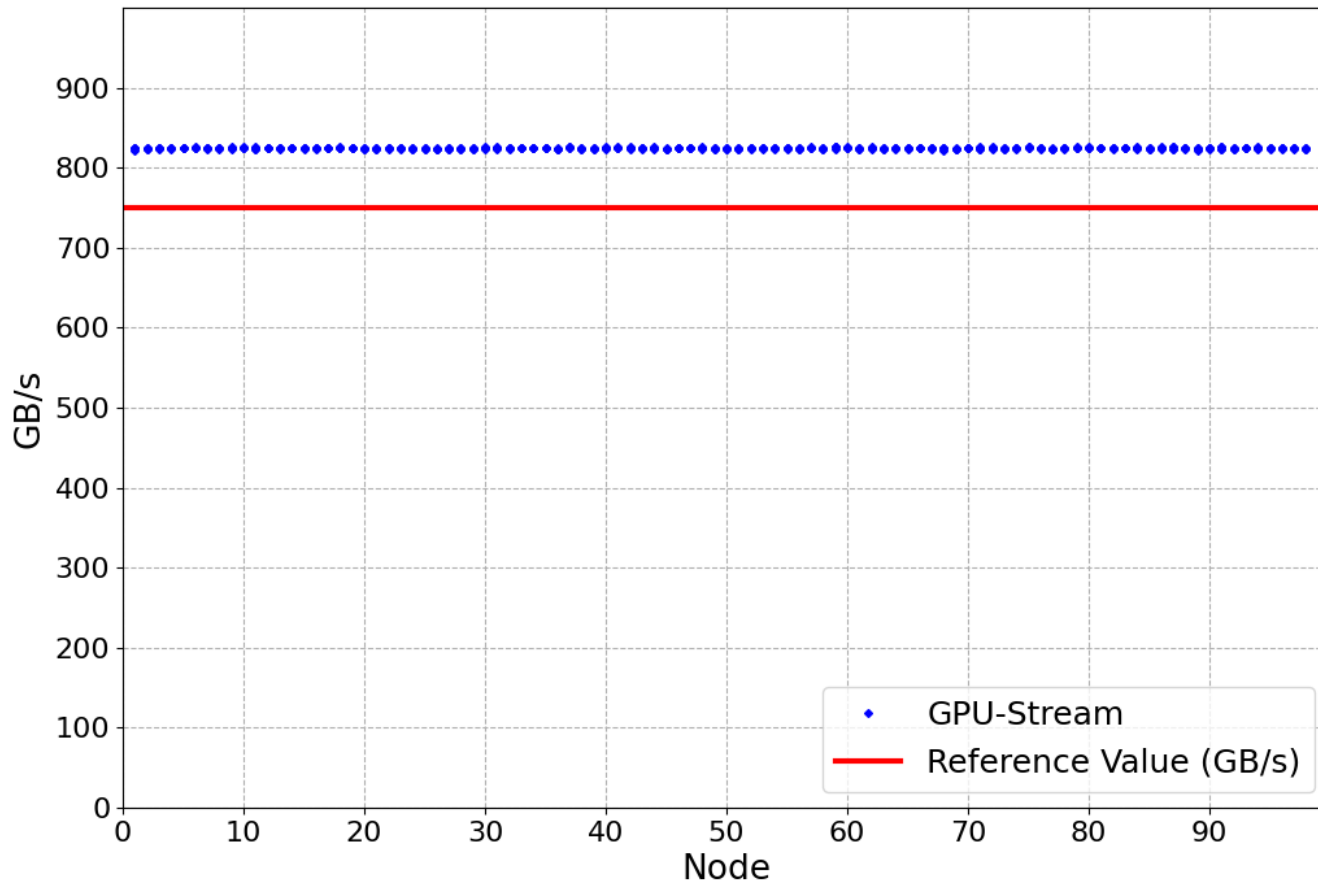
- Sanity threshold: 6.5 Tflops (no slow GPU found)



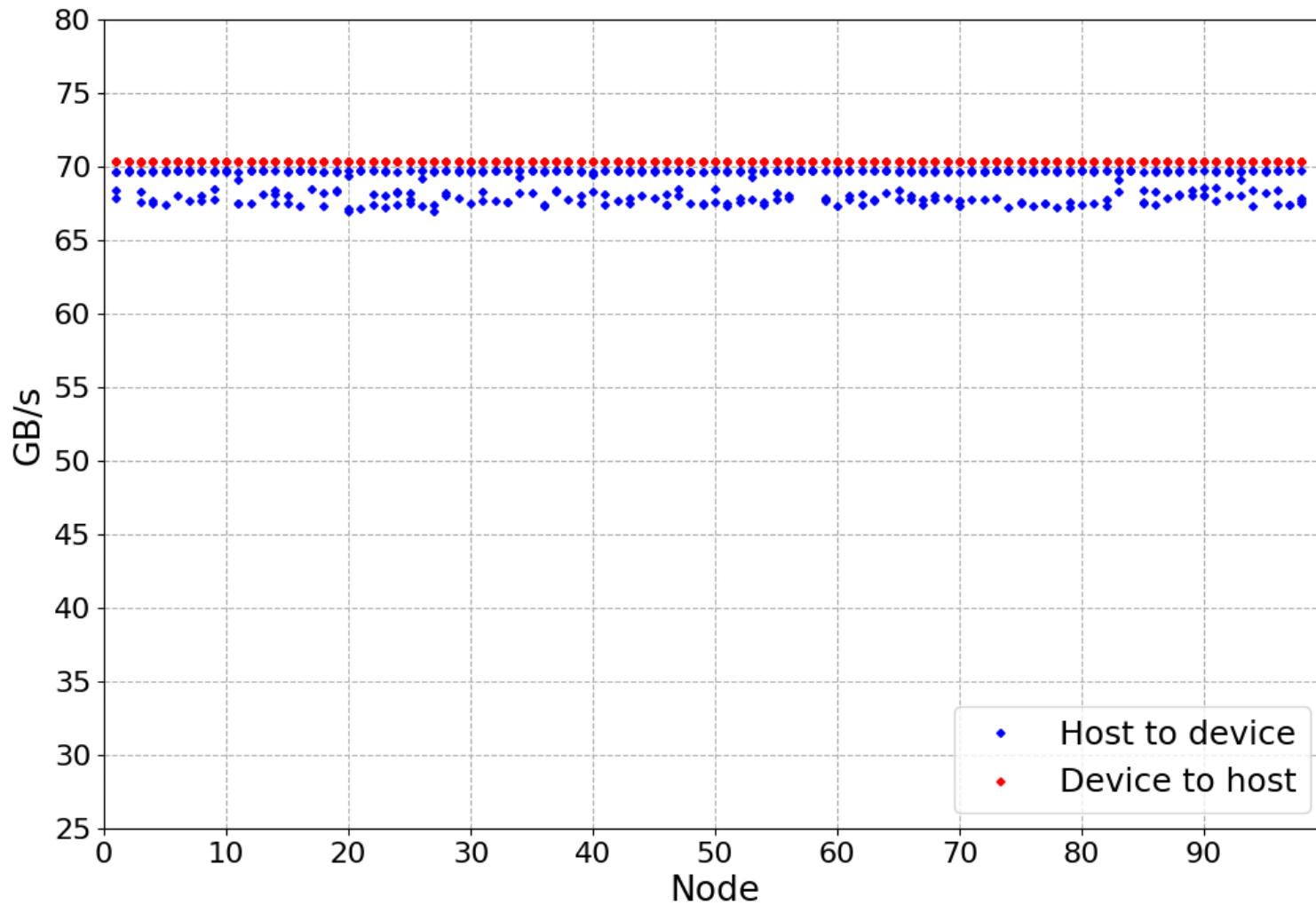
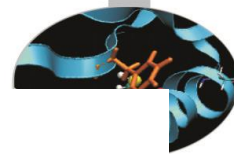
Stream-GPU



- Sanity threshold 750 Gb/s (no **slow GPUs found**)



Nvlink-GPU



P2P-GPU

