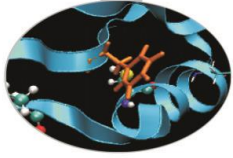
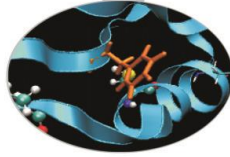


Outline



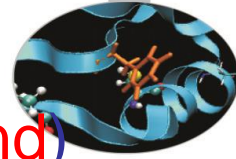
- MARCONI: Sanity checks launched during production on October (linpack, stream)
- MARCONI100: Sanity checks on GPU (dgemm, stream, nvlank, p2p) during maintenance and production on September

MARCONI – October 2021

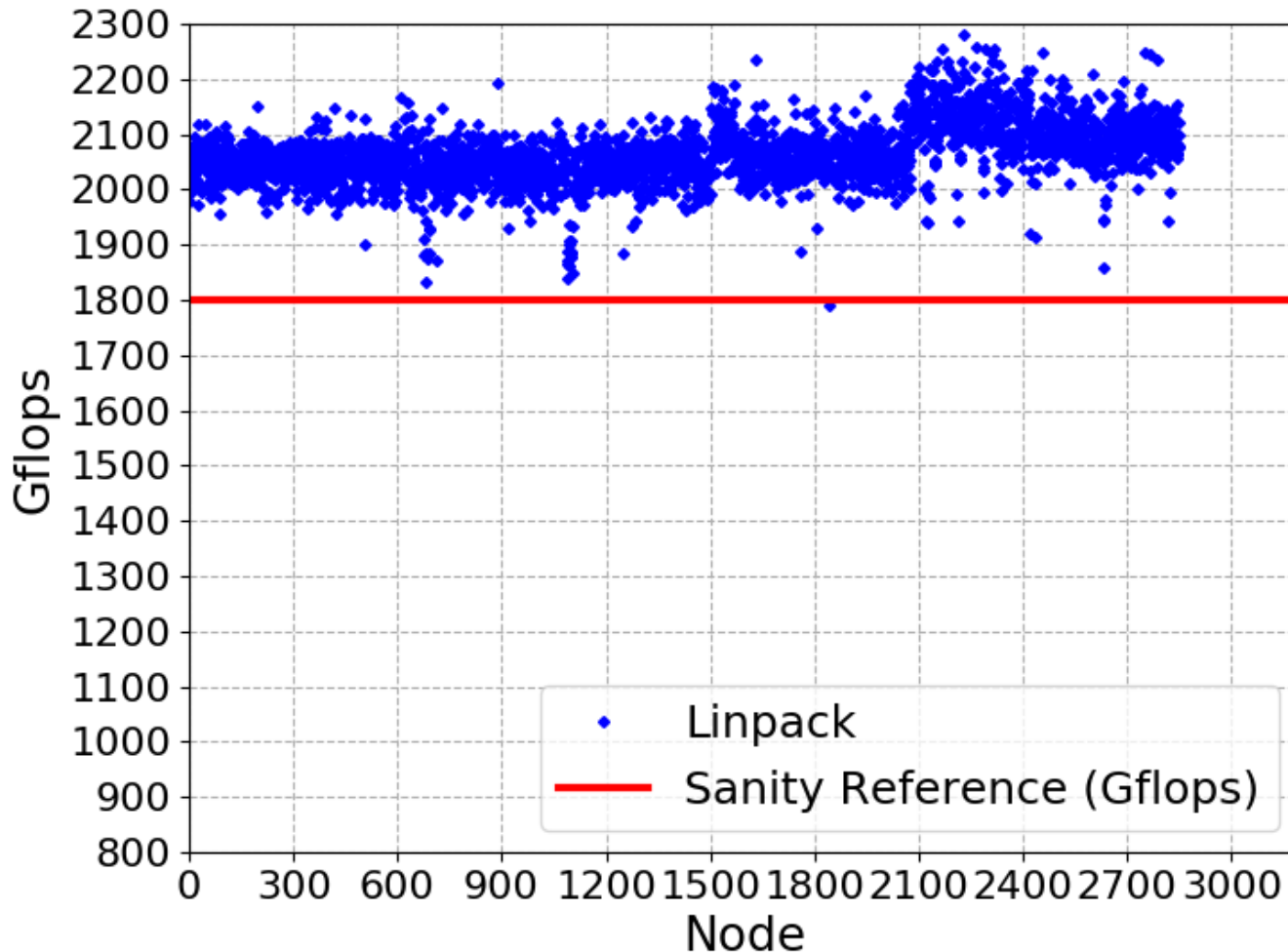


- Tests were performed during production and launched on October 2nd
- Tests: linpack and stream on each single node of SKL
- 2850 were tested in time for this Ticket Meeting
- No Switch-level Linpack tests with production runs
- Slow nodes have been removed from production for investigation and fixes

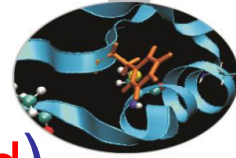
Linpack SKL



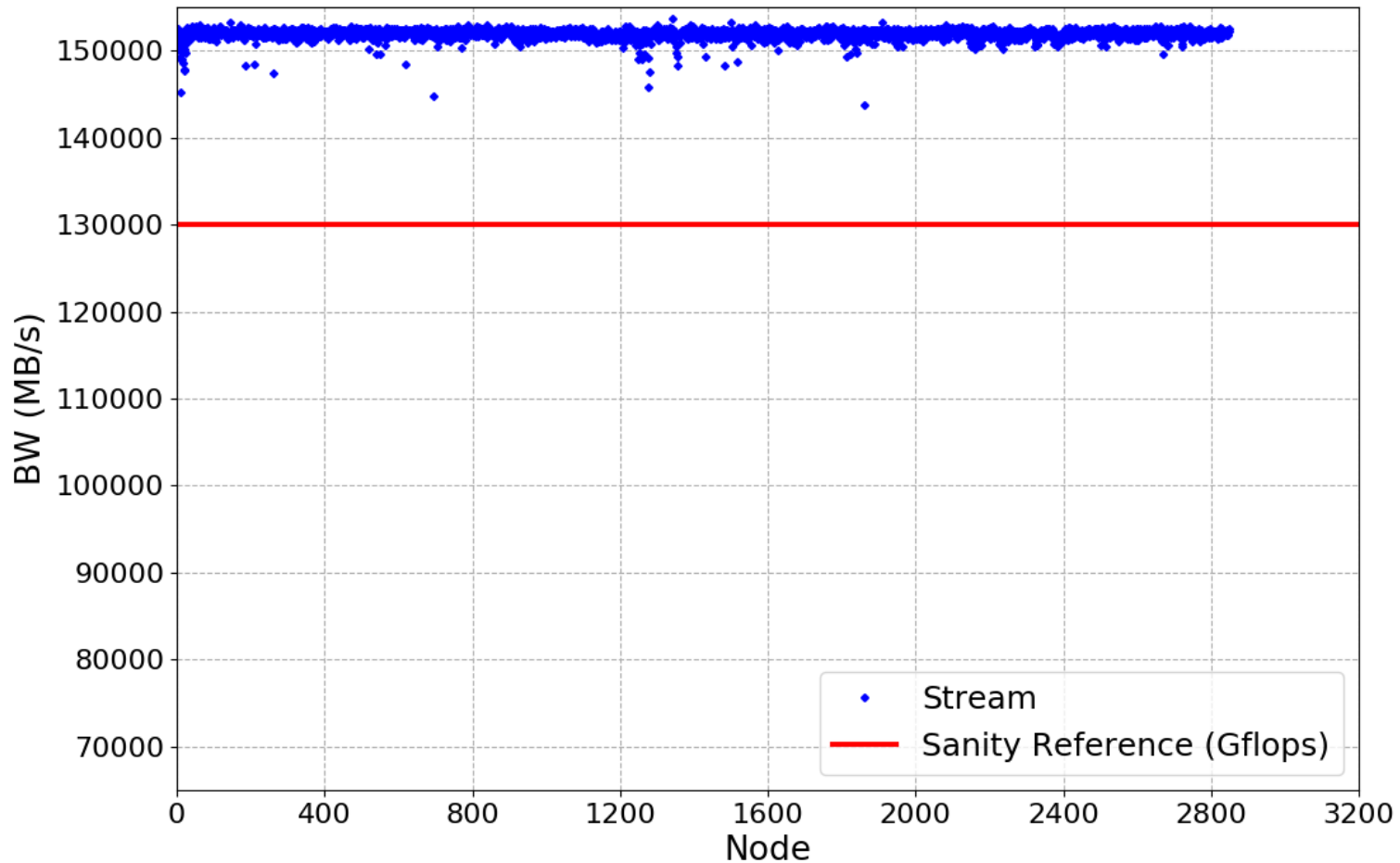
- Sanity threshold: 1800 Gflops (one slow node found)



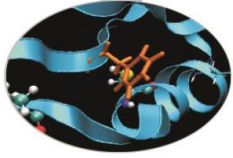
Stream SKL



- Sanity threshold: 130000 MB/s (no slow nodes found)

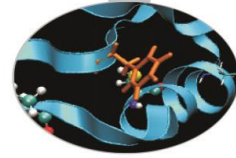


MARCONI100 – September 2021

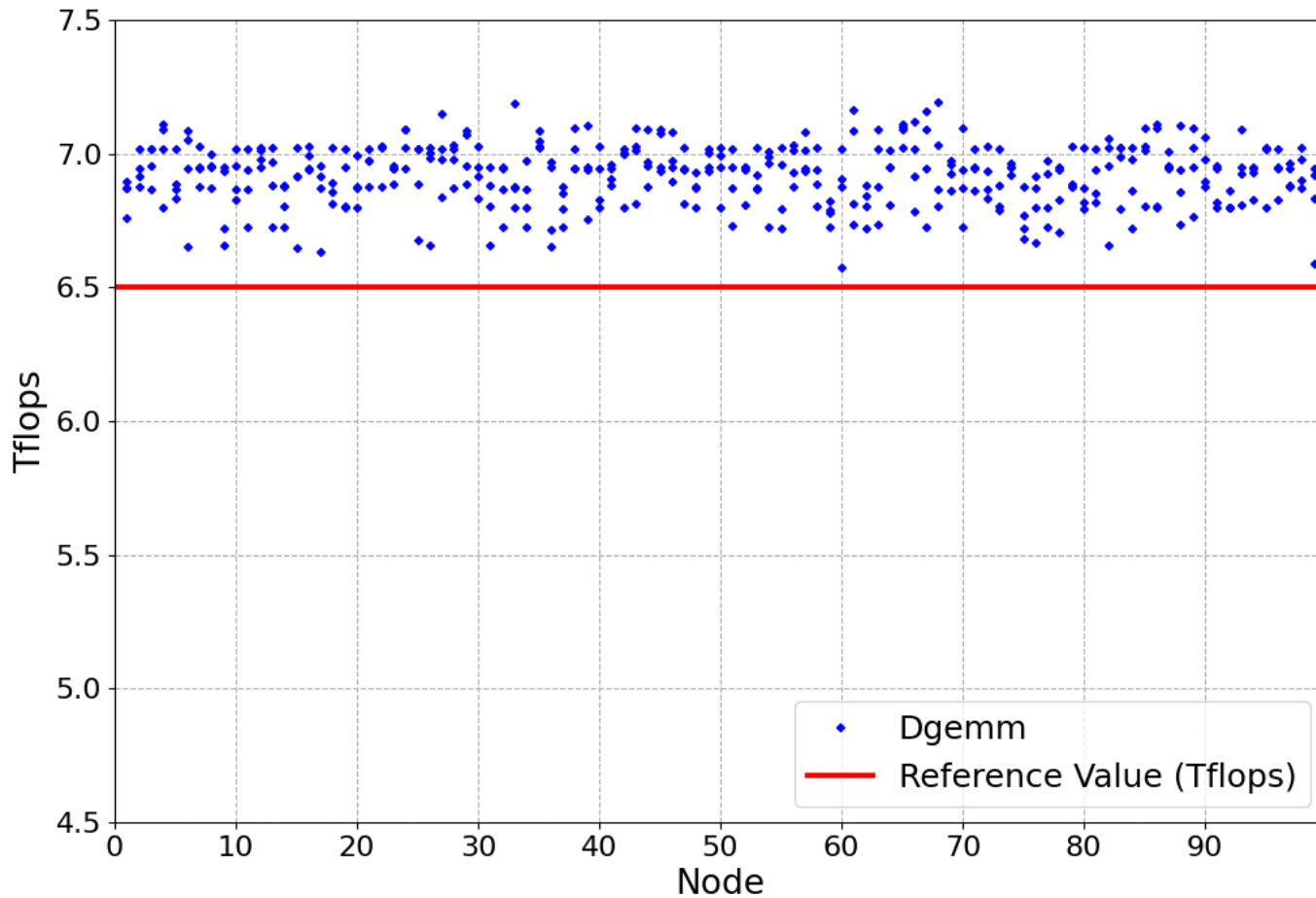


- Sanity checks were performed during maintenance on September 28th
- Tests: dgemm, stream-GPU, nvlink and p2p on each single node of M100
- Results from the nodes of EUROFusion partition are shown

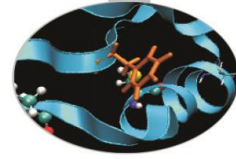
Dgemmm



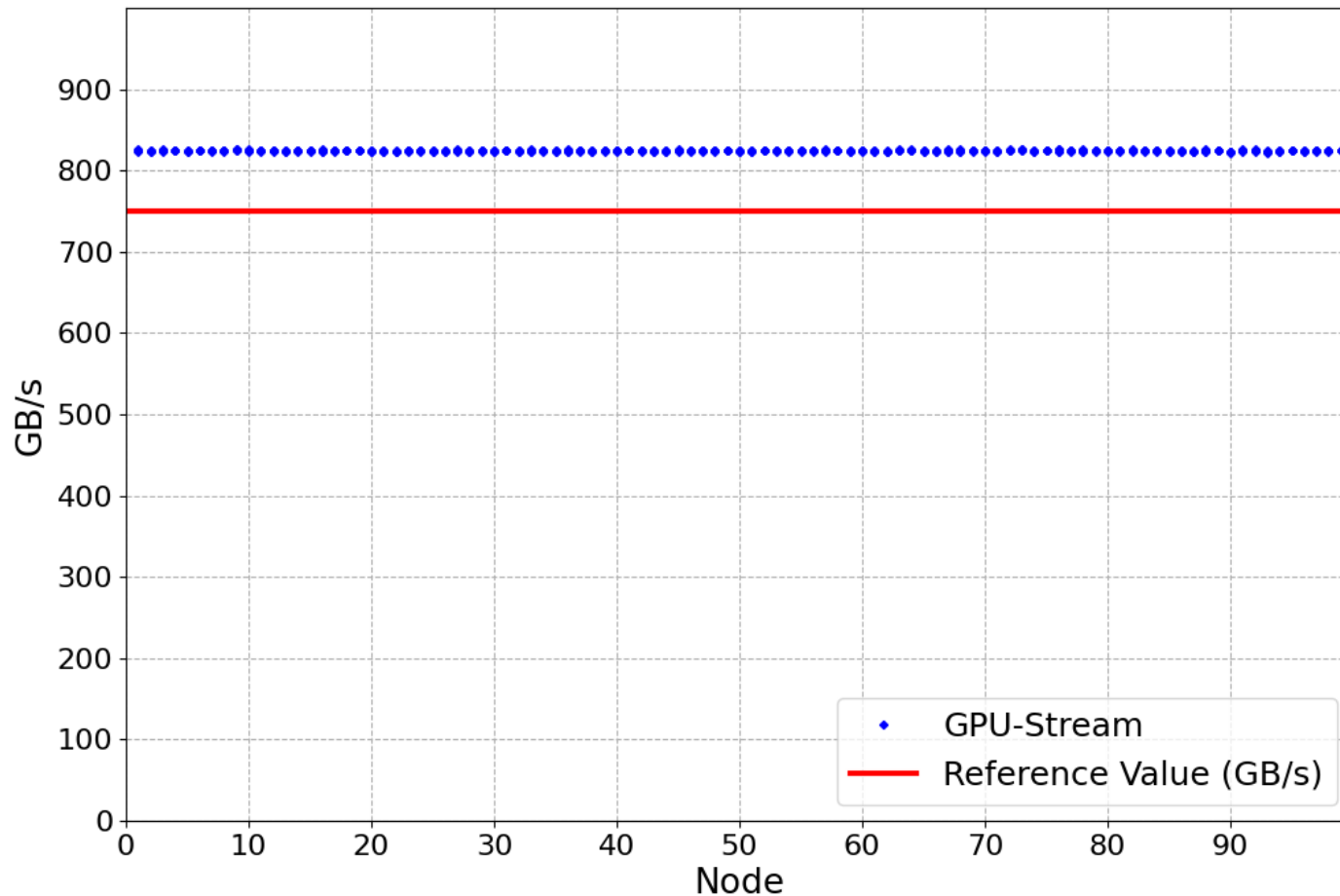
- Sanity threshold: 6.5 Tflops (no slow GPU found)



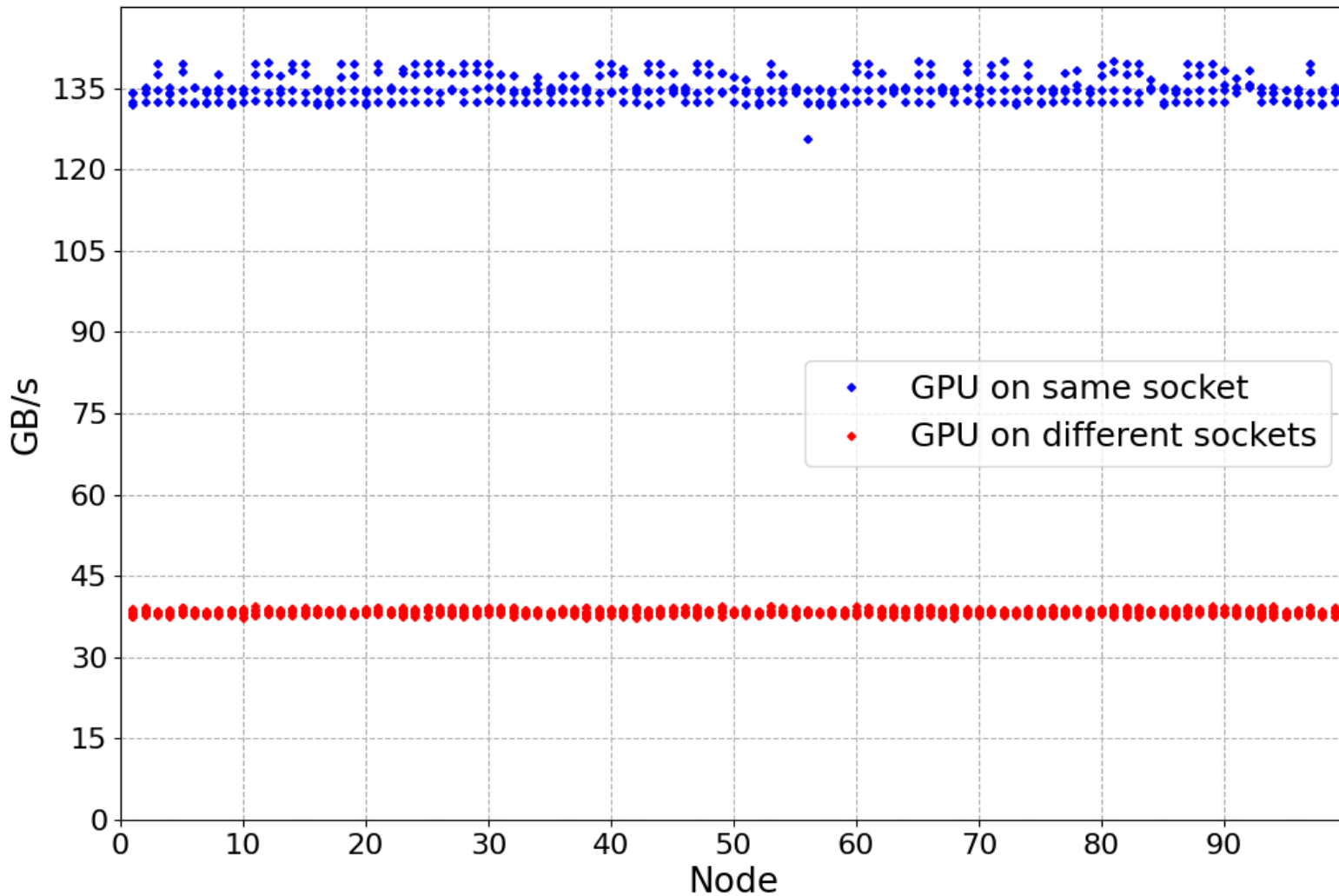
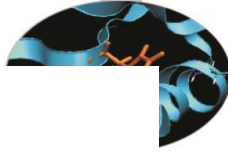
Stream-GPU



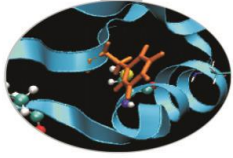
- Sanity threshold 750 Gb/s (no **slow GPUs found**)



P2P-GPU

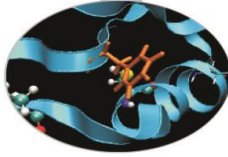


Nvlink-GPU



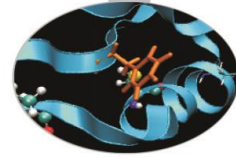
- **No results for Nvlink-GPU test**
- This is because the tests are conducted with `#SBATCH --gres=gpus:4` and the Nvlink test suffered from it
- In fact, this is how we discovered the bug introduced with the newest version of Slurm 21.08.1

MARCONI100 – September 2021

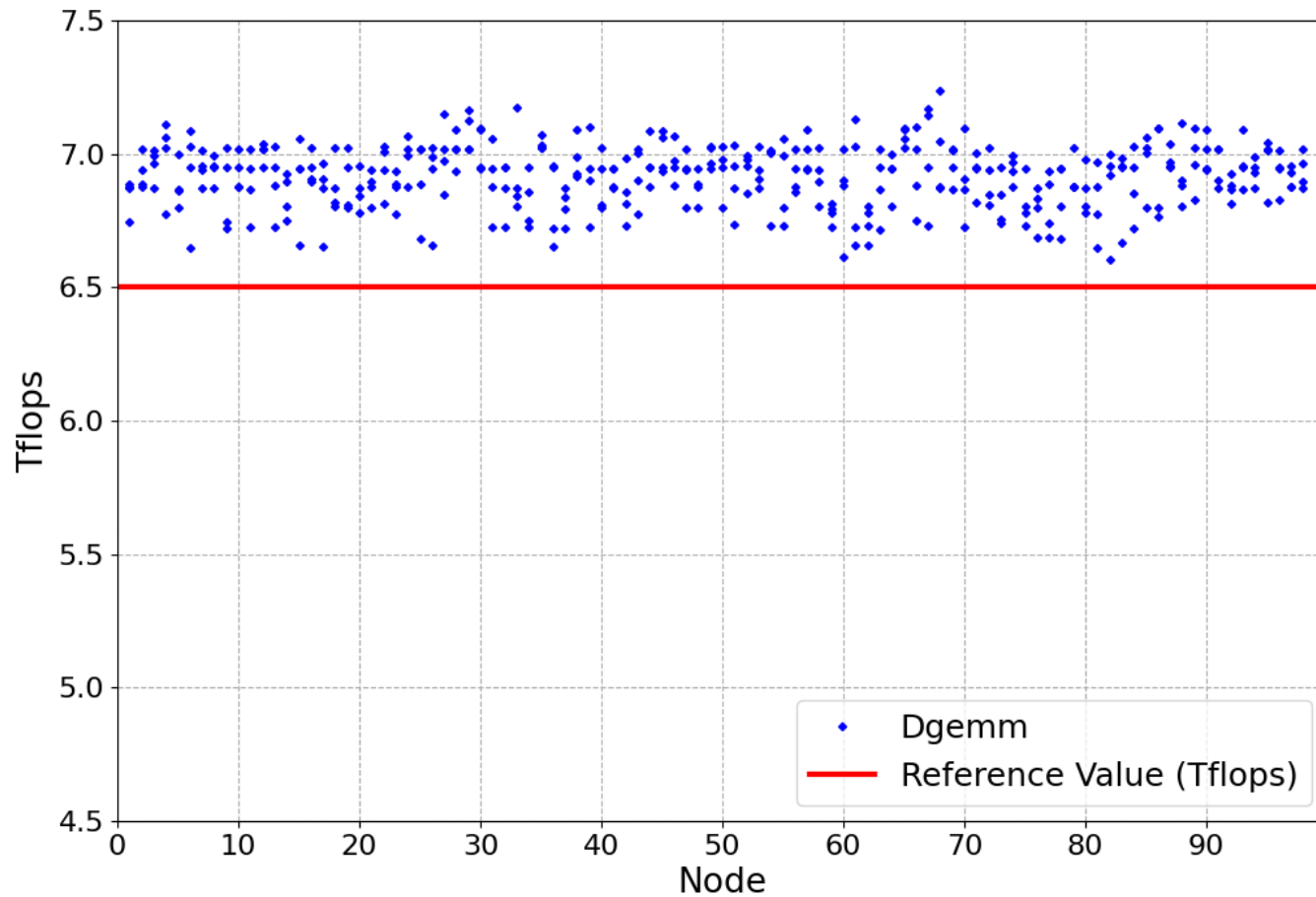


- Further sanity checks were performed during production and launched on September 29th
- They were launched with:
`#SBATCH --ngpus-per-node=4` to avoid the issue with Nvlink test
- Tests: dgemm, stream-GPU, nvlink and p2p on each single node of M100
- Results from the nodes of EUROFusion partition are shown

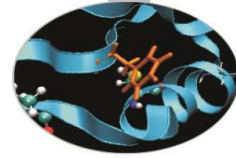
Dgemmm



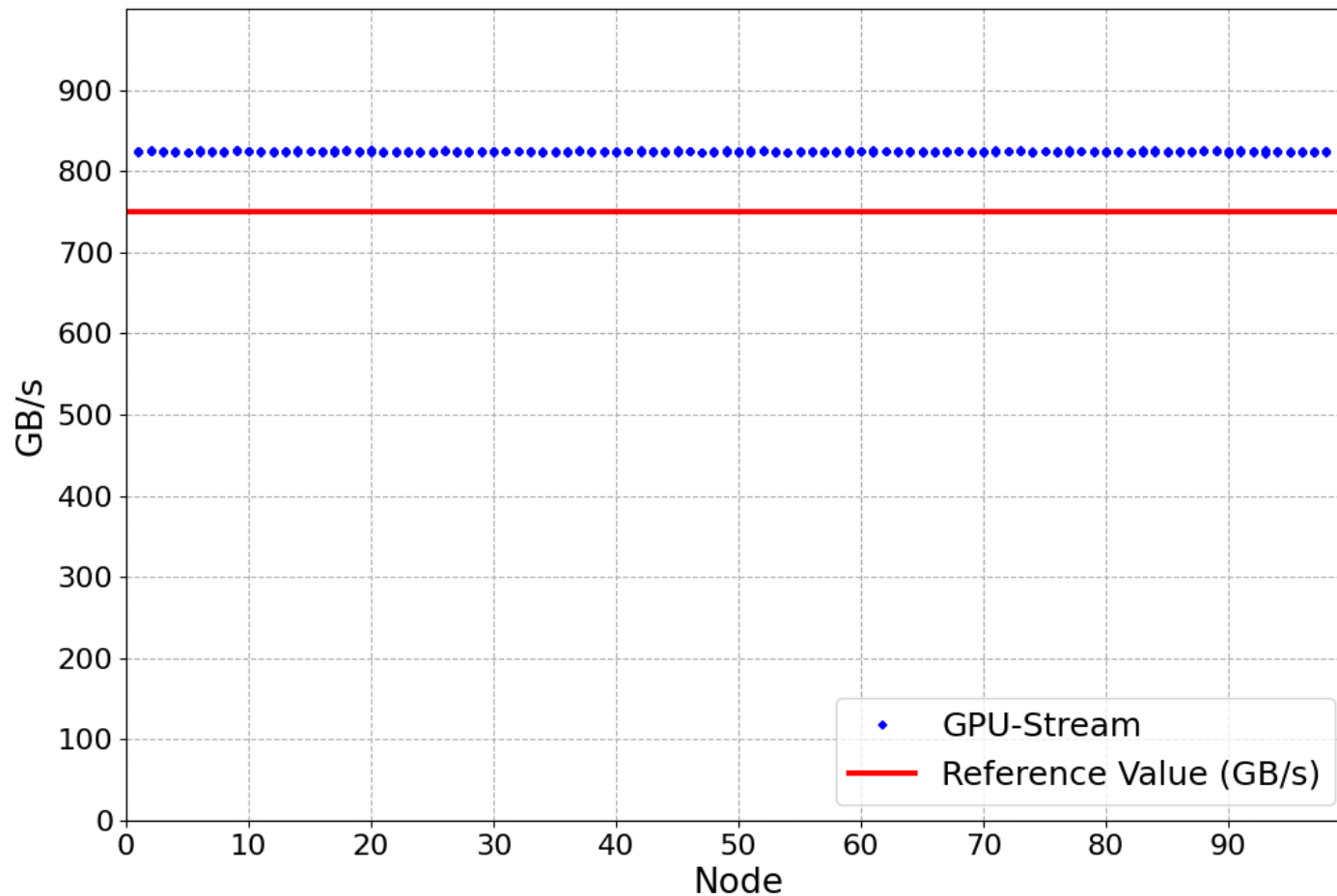
- Sanity threshold: 6.5 Tflops (no slow GPU found)



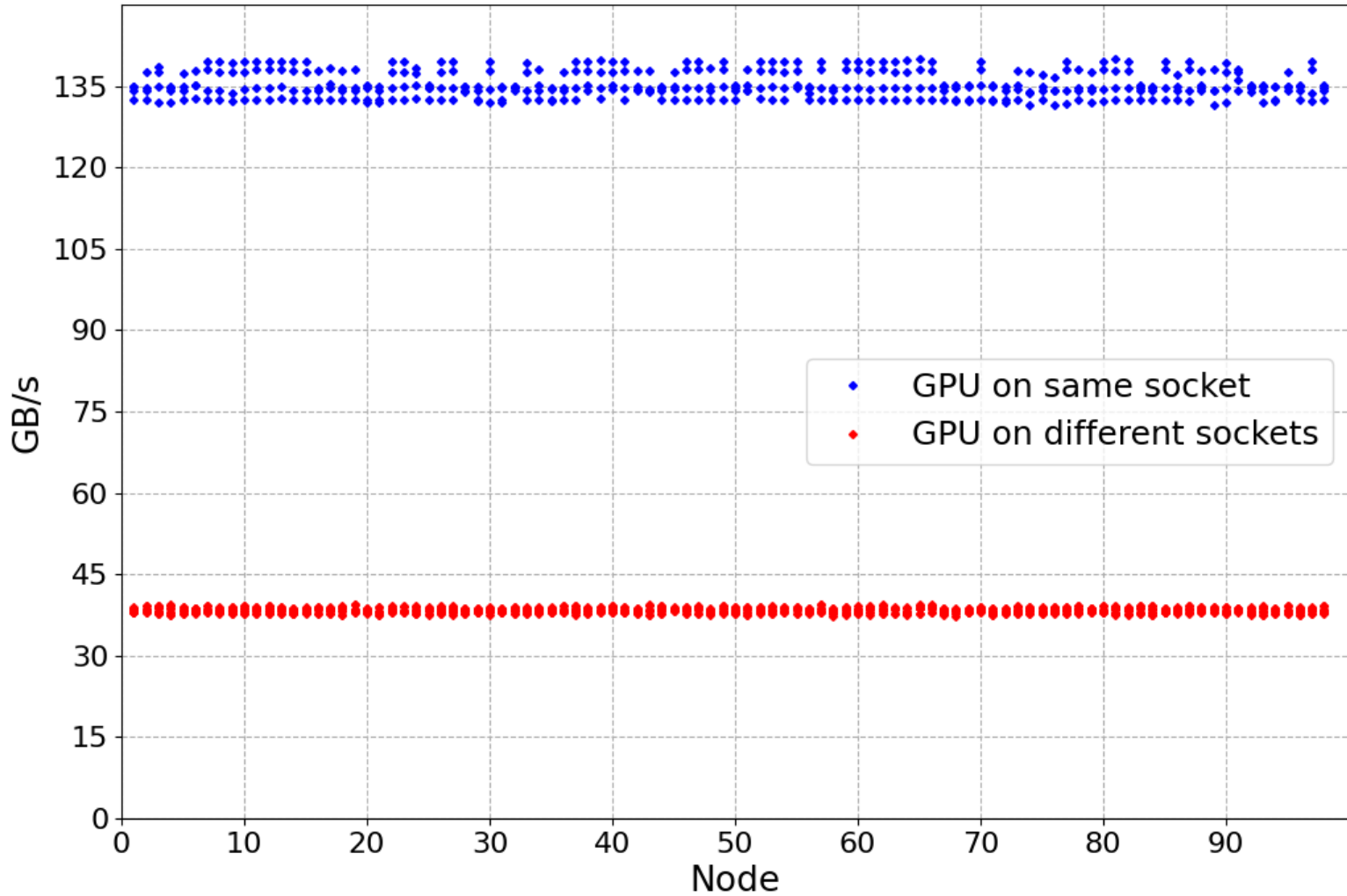
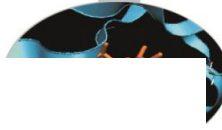
Stream-GPU



- Sanity threshold 750 Gb/s (no **slow GPUs found**)



P2P-GPU



Nvlink-GPU

