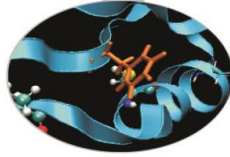
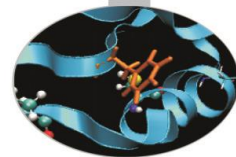


MARCONI100 – November 2021

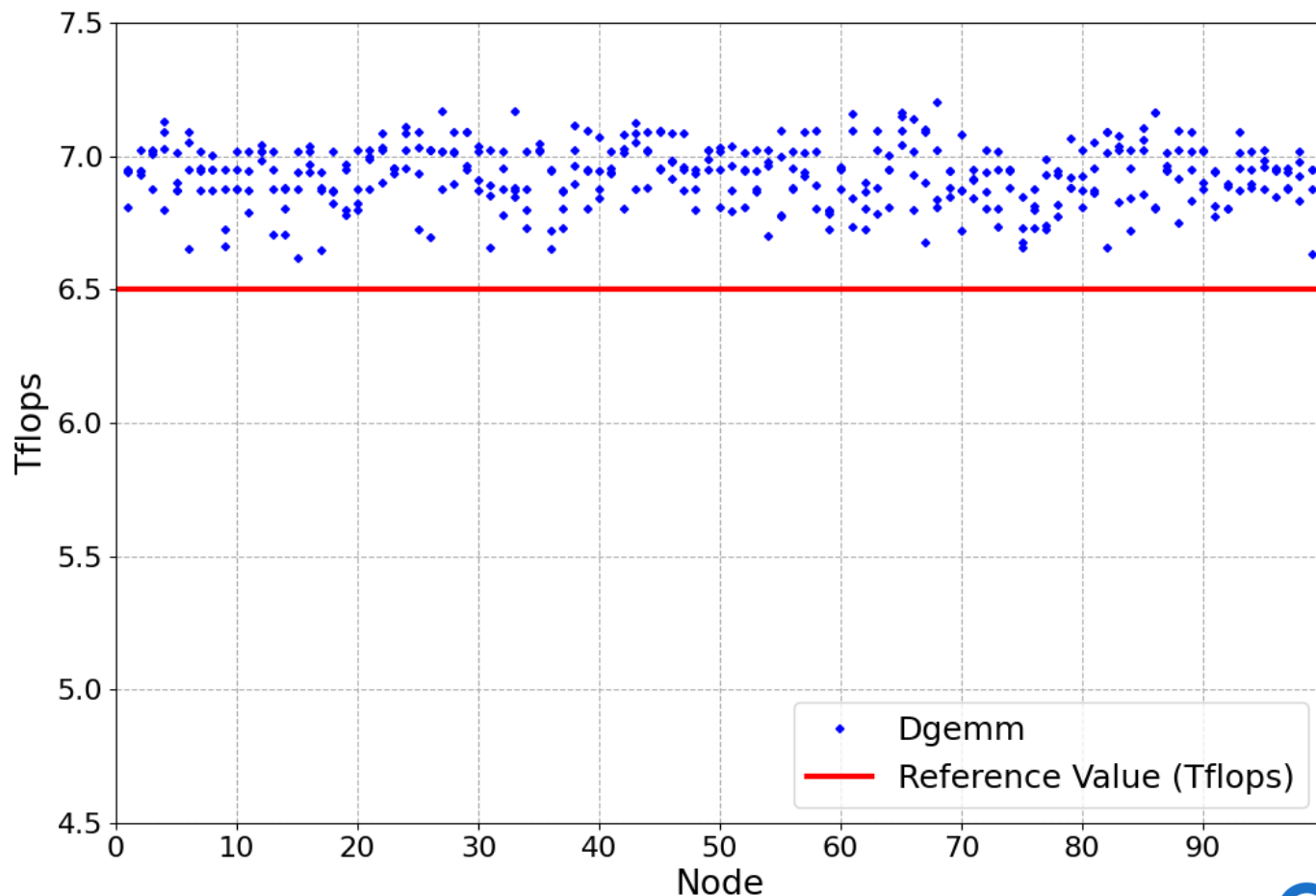


- Sanity checks were performed during maintenance on November 23rd
- Tests: dgemm, stream-GPU, nvlink and p2p on each single node of M100
- Results from the nodes of EUROFusion partition are shown

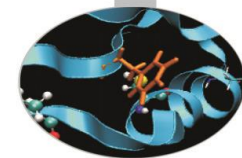
Dgemmm



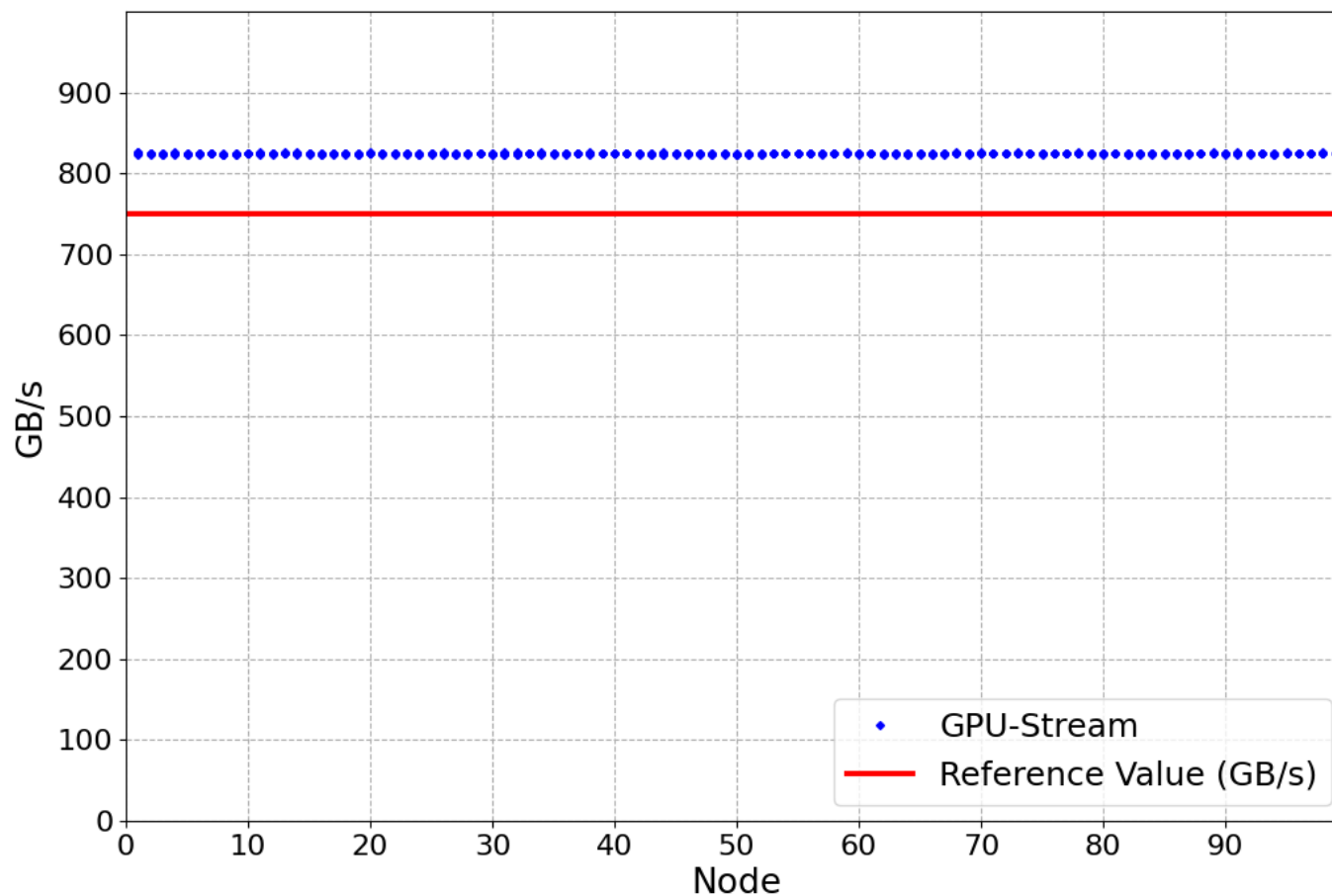
- Sanity threshold: 6.5 Tflops (no slow GPU found)



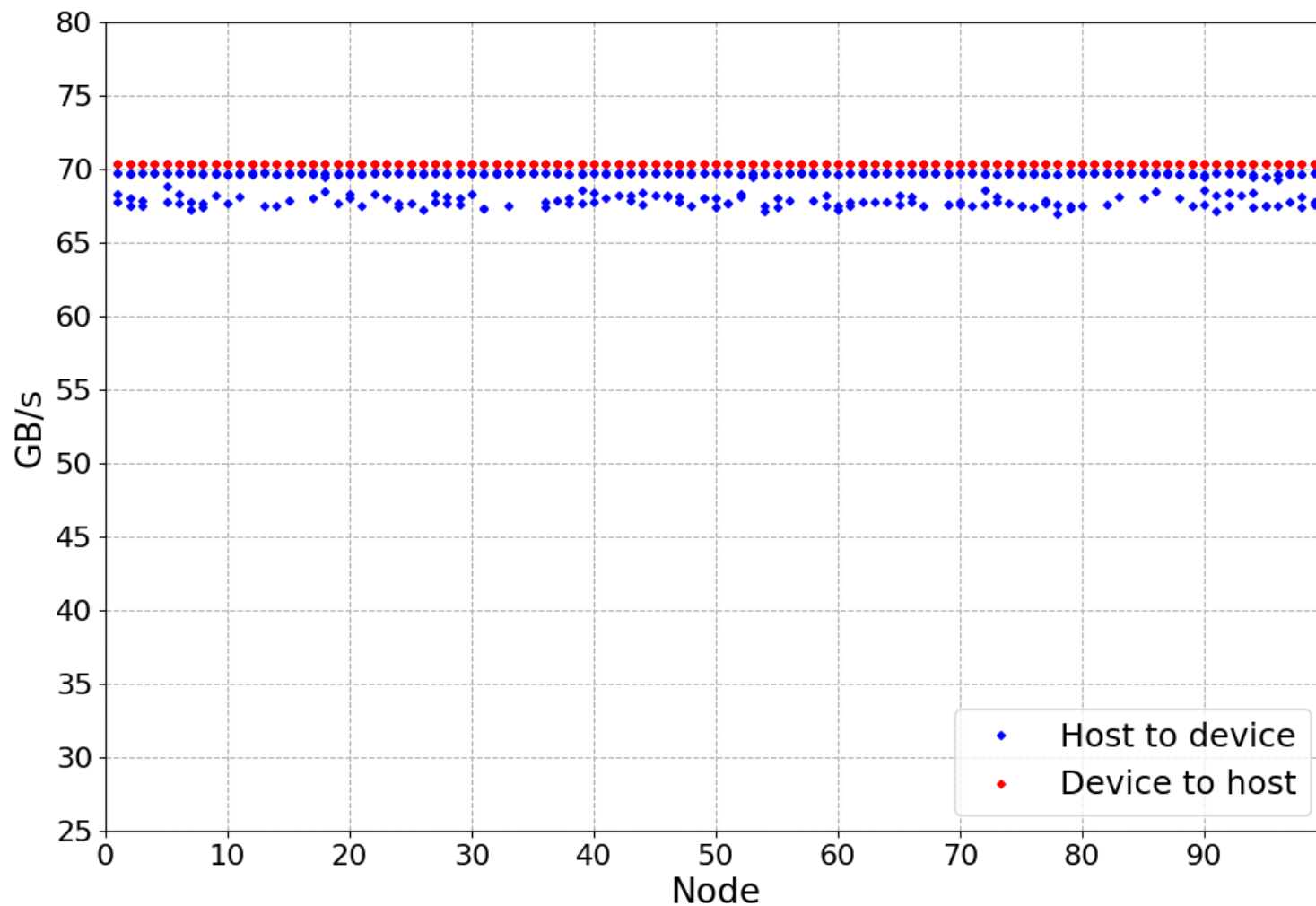
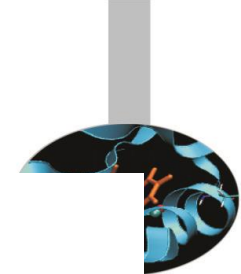
Stream-GPU



- Sanity threshold 750 Gb/s (no **slow GPUs found**)



Nvlink-GPU



P2P-GPU

