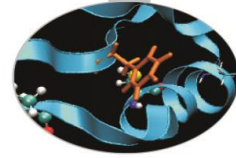


# Outline

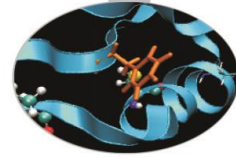
- MARCONI: Sanity checks launched during production on March (linpack, stream)
- Statistics on the power capping detection on the nodes of MARCONI
- MARCONI100: Sanity checks on GPU (dgemm, stream, nvlink, p2p) during production on February

# MARCONI – March 2022

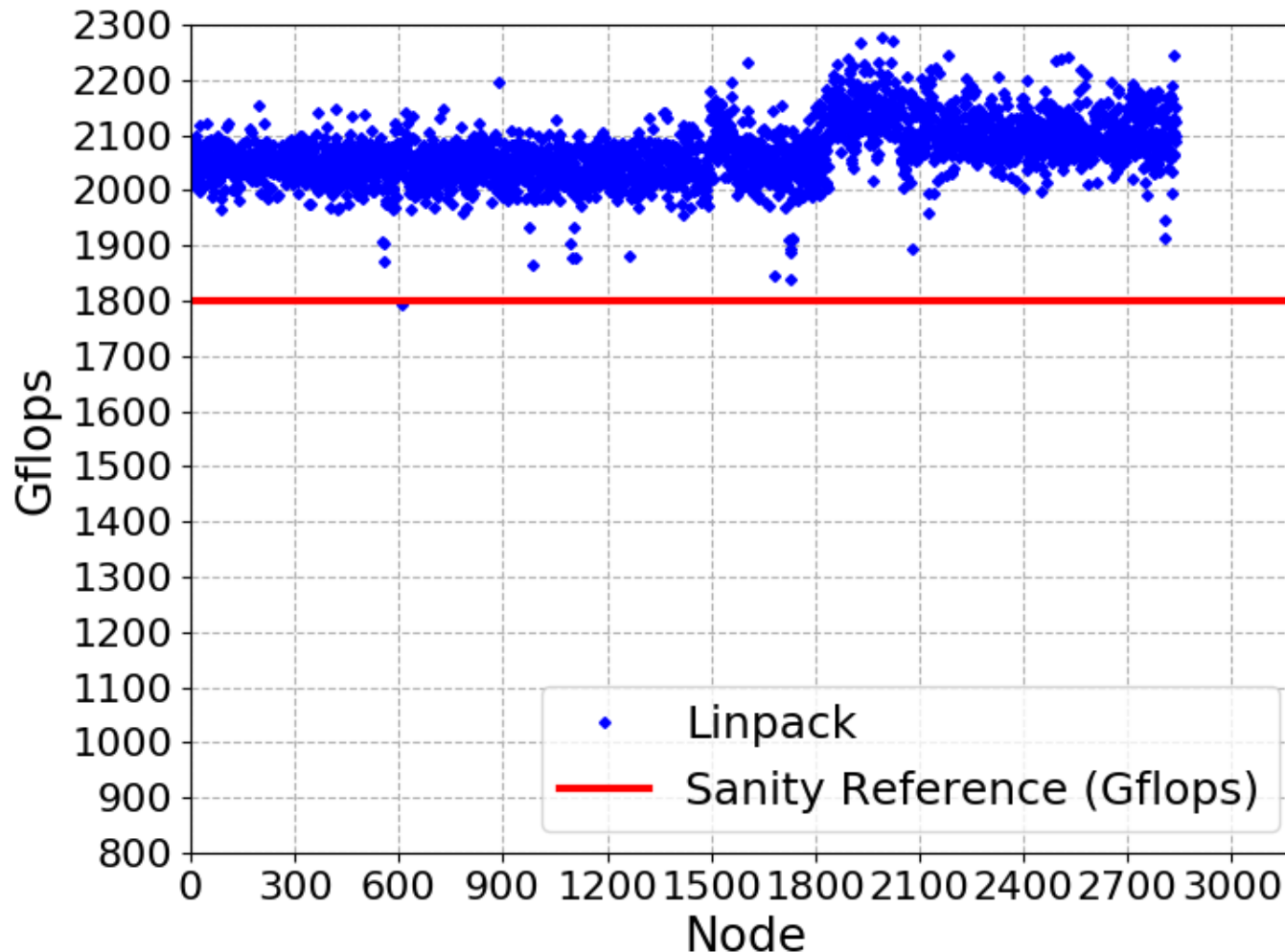


- Tests were performed during production and launched on March 1<sup>st</sup>
- Tests: linpack and stream on each single node of SKL
- 2840 were tested in time for this Ticket Meeting (only EF nodes tested)
- No Switch-level Linpack tests with production runs
- Slow nodes have been removed from production for investigation and fixes

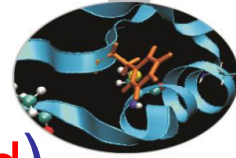
# Linpack SKL



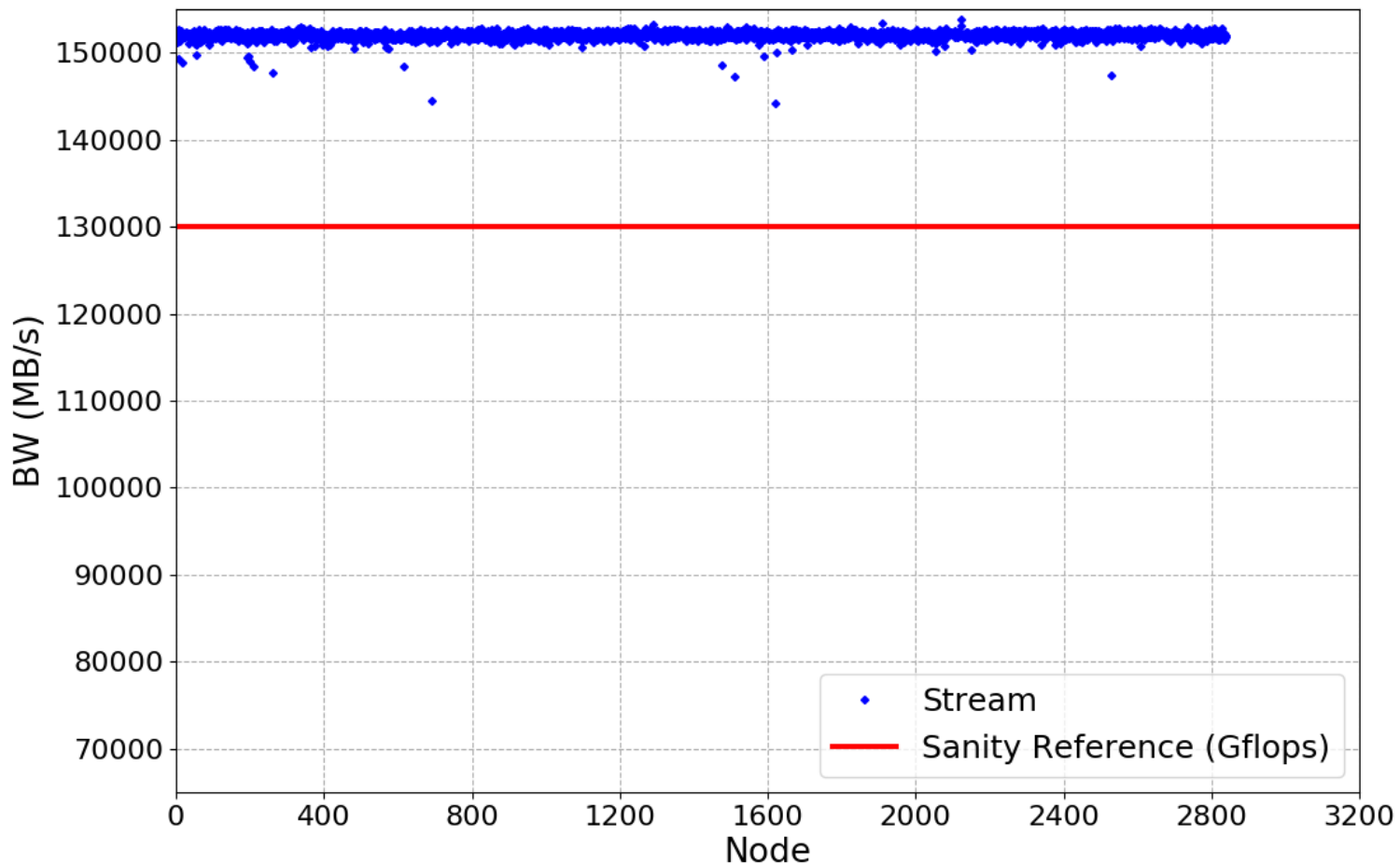
- Sanity threshold: 1800 Gflops (**one slow node found**)



# Stream SKL

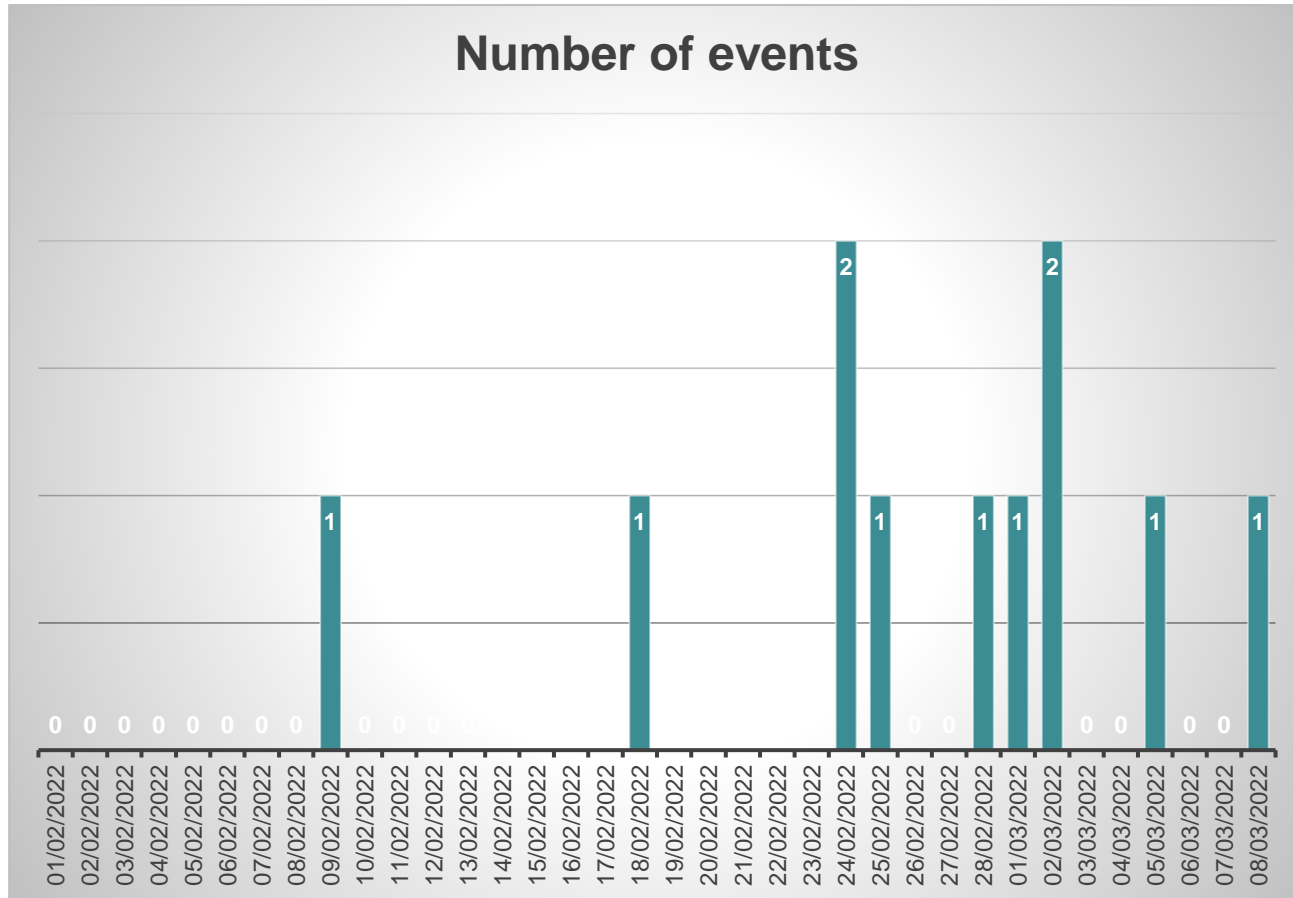


- Sanity threshold: 130000 MB/s (no slow nodes found)



# Power capping events on MARCONI

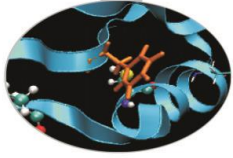
- **11 nodes** with power capping on notified from 01/02/22 to 08/03/22
- An event is registered when the node has a frequency below **998MHz**
- Tests needed to see how it compares to the Gflop/s measured by our sanity checks



# Power capping events on MARCONI

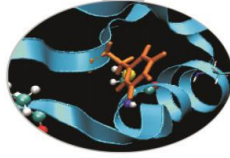
- **Below is the list of uncapped nodes during 2022:**
  - 05/01: r161c01s01 (1), r161c02s01 (1)
  - 07/01: r163c09s02 (1), r171c16s04 (1)
  - 08/01: r141c16s02 (1)
  - 11/01: r161c01s04 (1), r161c02s01 (2)
  - 13/01: r141c16s02 (2), r161c01s02 (1), r161c01s04 (2)
  - 14/01: r141c16s02 (3)
  - 24/01: r165c02s04 (1)
  - 25/01: r165c02s04 (2)
  - 27/01: r149c16s04 (1)
  - 09/02: r161c01s01 (2)
  - 18/02: r137c14s01 (1)
  - 24/02: r141c16s02 (4), r167c12s04 (1)
  - 25/02: r141c16s02 (5)
  - 28/02: r165c16s04 (3)
  - 01/03: r165c16s04 (4)
  - 02/03: r137c09s02 (1), r165c16s04 (5)
  - 05/03: r141c16s02 (6)
  - 08/03: r175c15s03 (1)
- There are some heavy offenders that are worth investigating
- **13 different nodes** in 67 days
- The nodes involved in the January Sanity Checks were NOT uncapped, it was a procedure fault (currently don't know why)

# MARCONI100 – February 2022

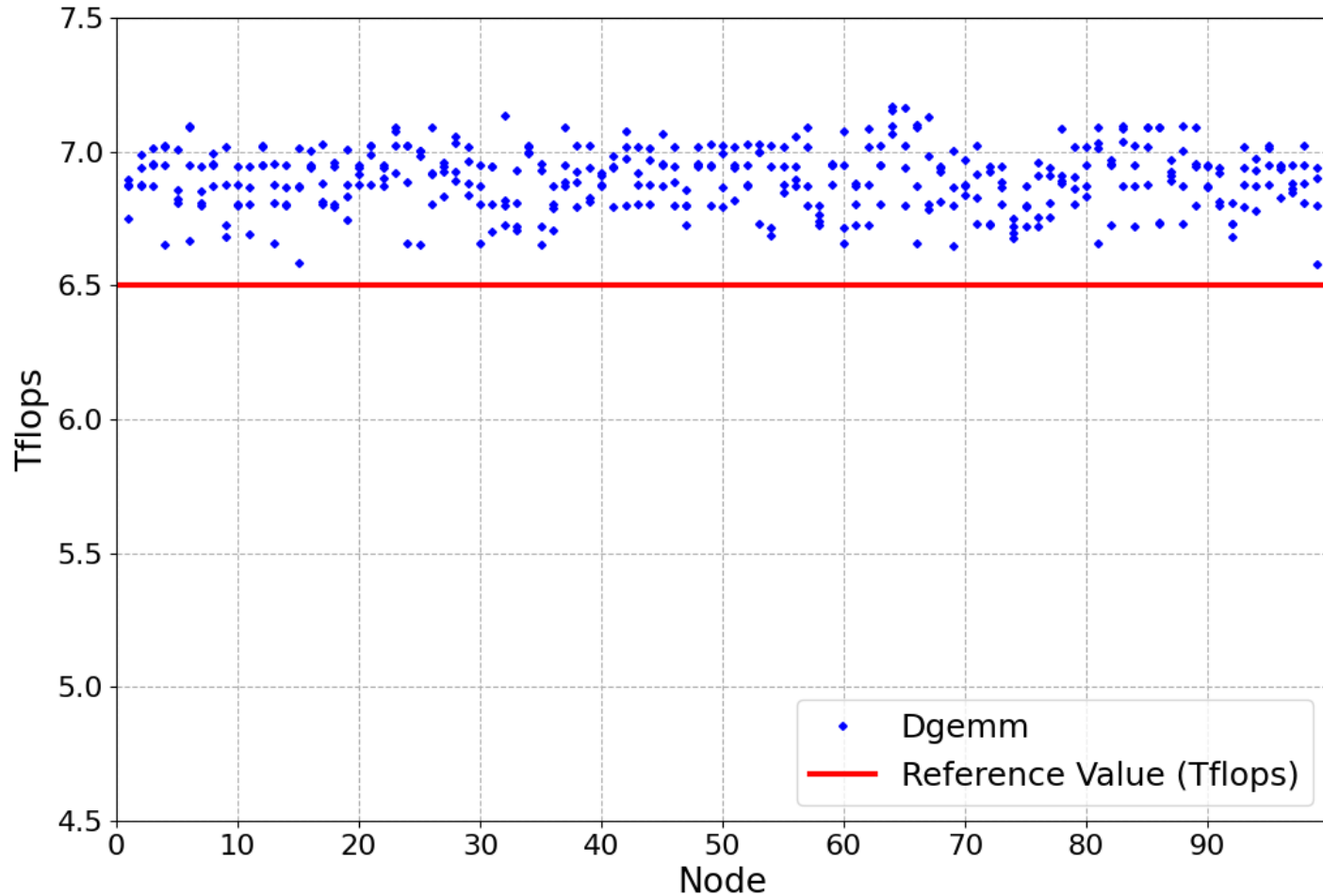


- Sanity checks were performed during production and launched on February 22<sup>nd</sup>
- Tests: dgemm, stream-GPU, nvlink and p2p on each single node of M100
- Results from the nodes of EUROFusion partition are shown

# Dgemmm

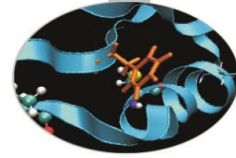


- Sanity threshold: 6.5 Tflops (no slow GPU found)

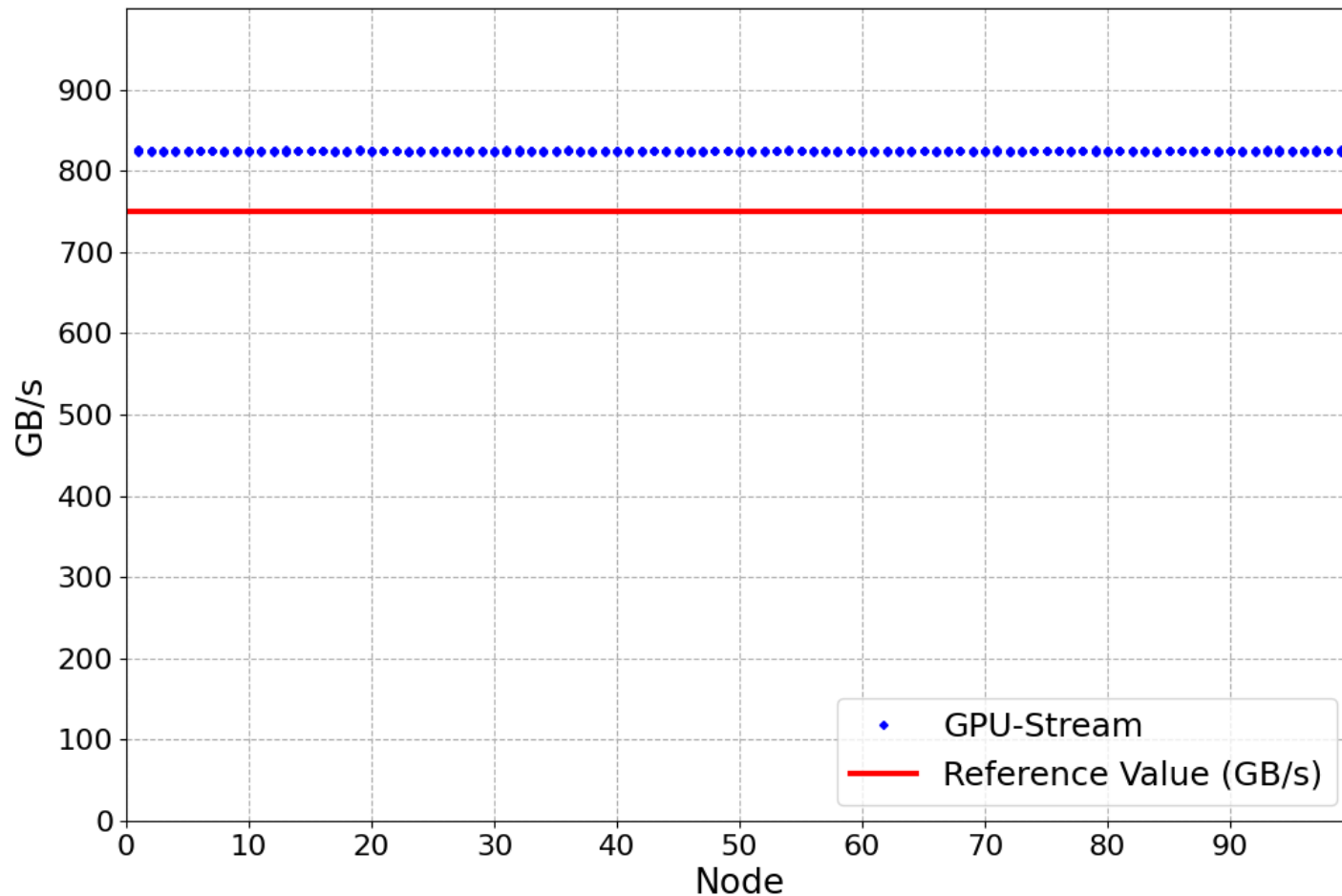




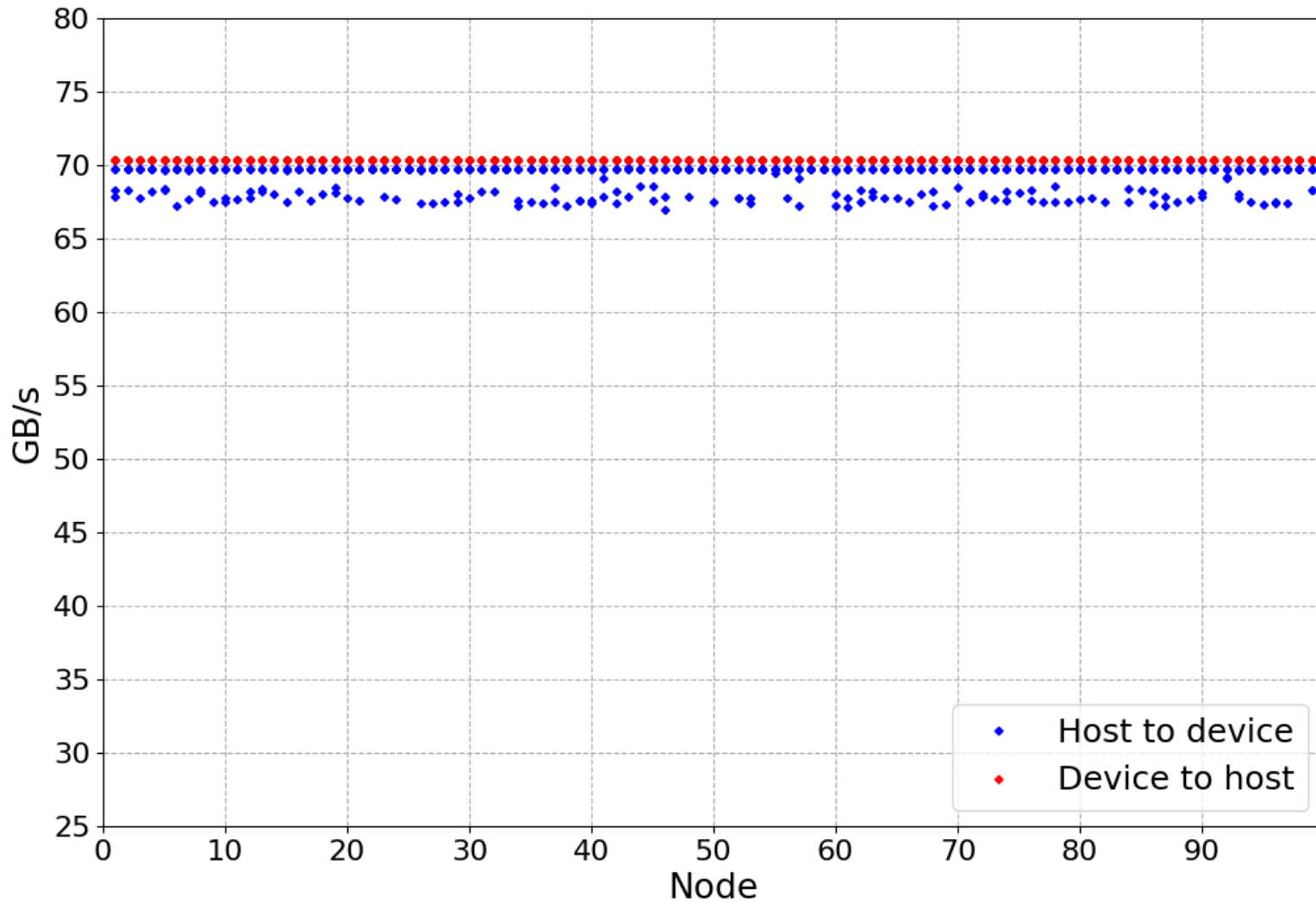
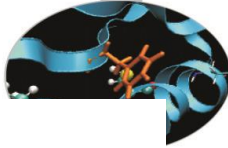
# Stream-GPU



- Sanity threshold 750 Gb/s (no slow GPUs found)



# Nvlink-GPU



# P2P-GPU

