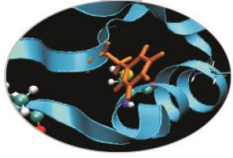


Outline

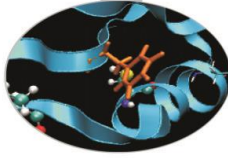
- MARCONI: Sanity checks launched during maintenance on March and production on April (linpack, stream)
- MARCONI100: Sanity checks on GPU (dgemm, stream, nvlink, p2p) during production on February

MARCONI – March 2022

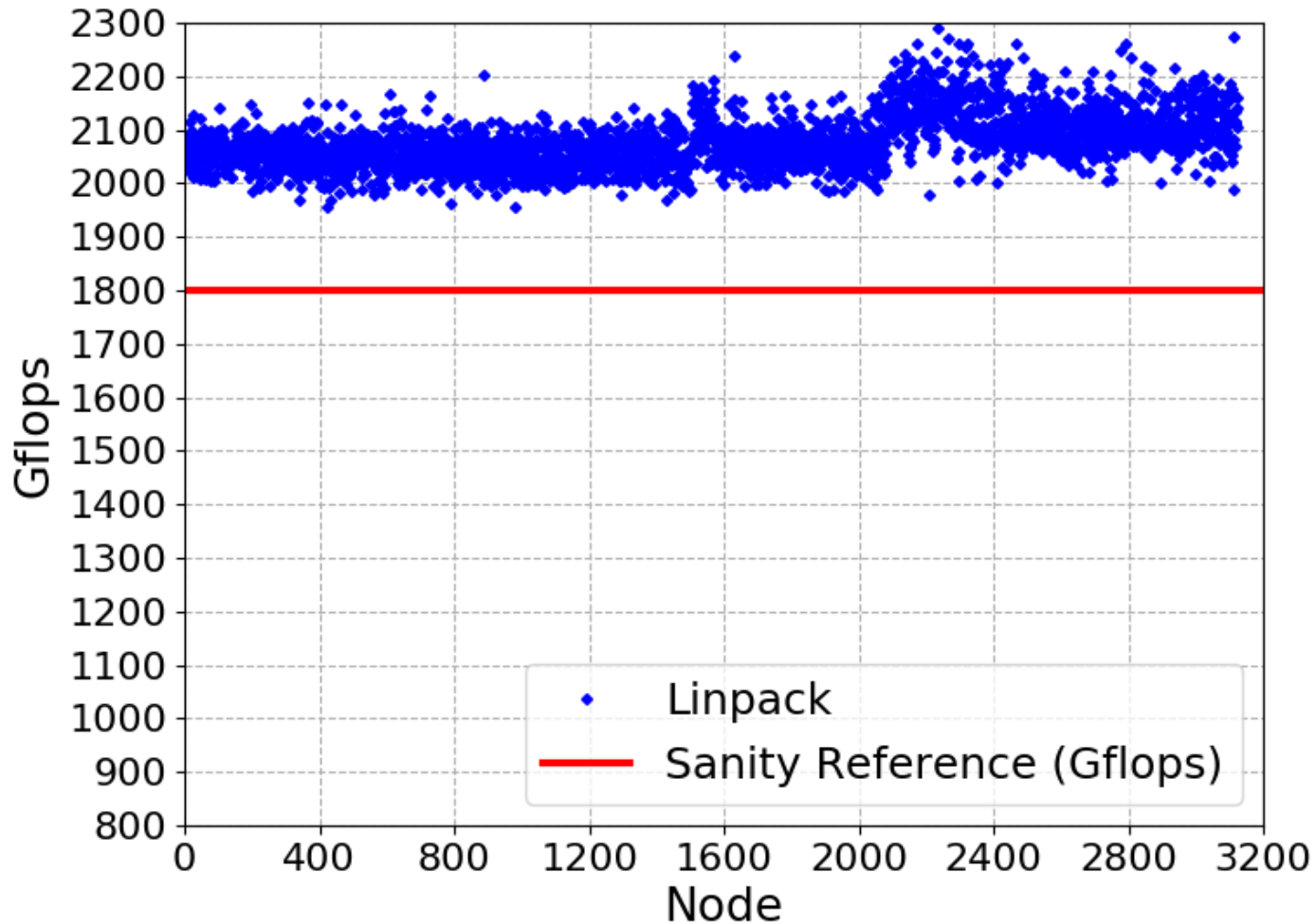


- Tests were performed during maintenance on March 22nd
- Tests: lincpack and stream on each single node of SKL
- Switch-level Lincpack tests were performed during maintenance
- Slow nodes have been removed from production for investigation and fixes

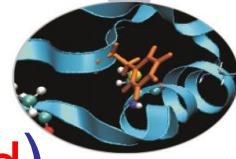
Linpack SKL



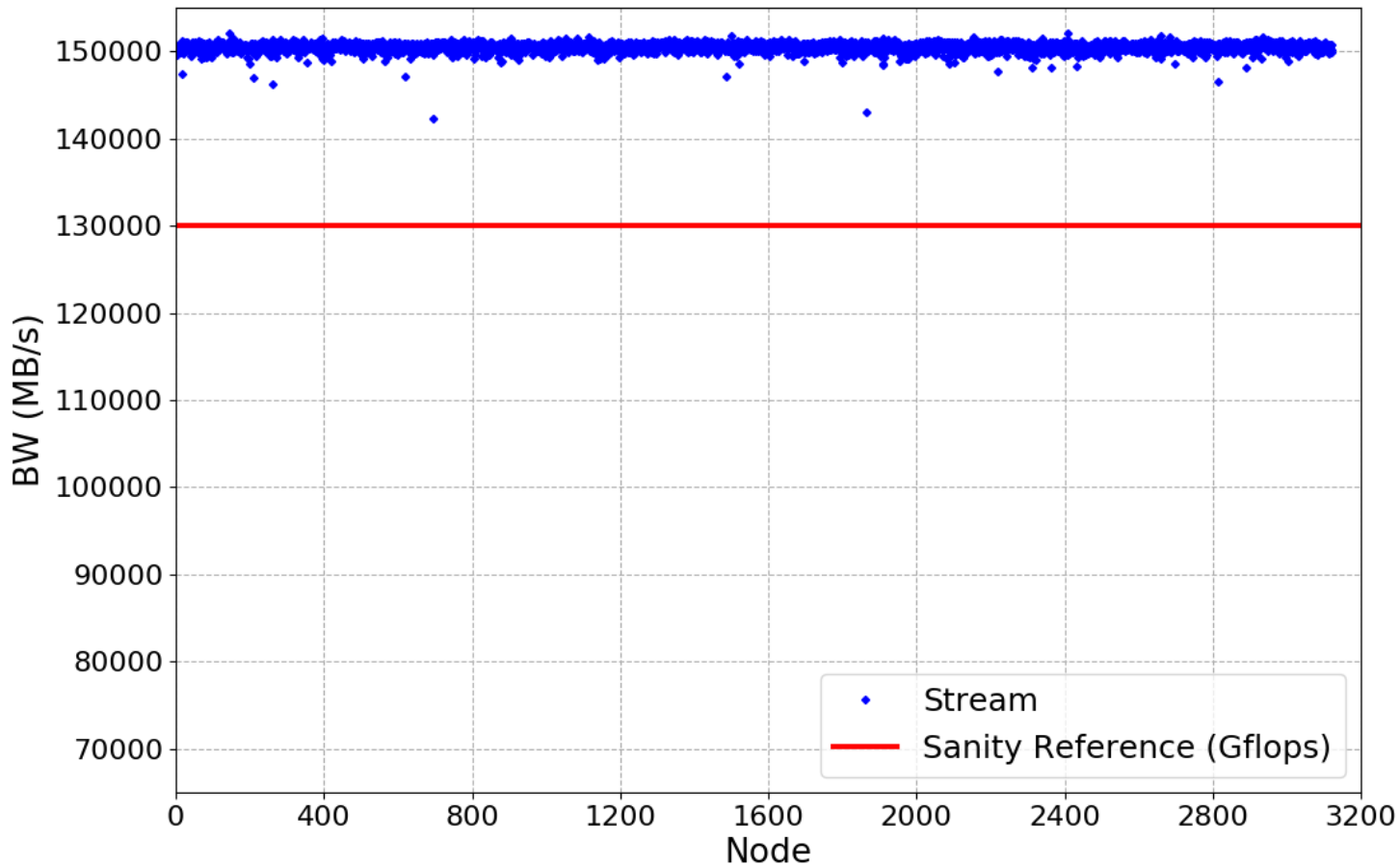
- Sanity threshold: 1800 Gflops (no slow nodes found)



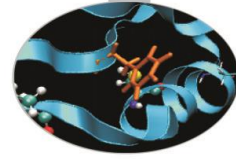
Stream SKL



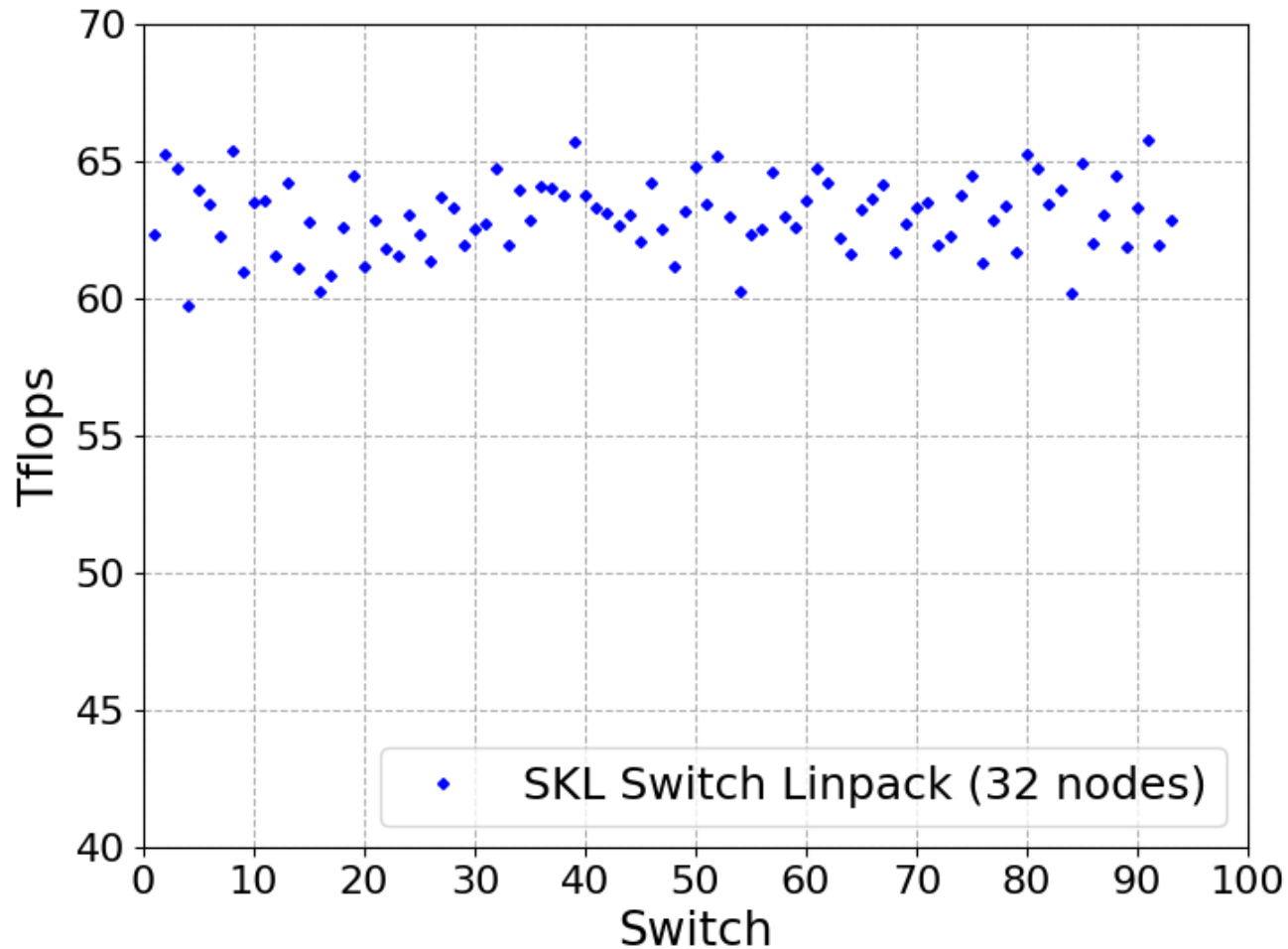
- Sanity threshold: 130000 MB/s (no slow nodes found)



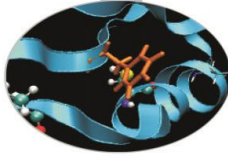
Switch-level Linpack SKL



- 93 switches tested
- Overall stable performance

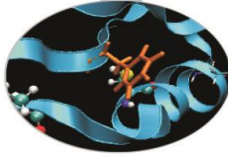


MARCONI – March 2022

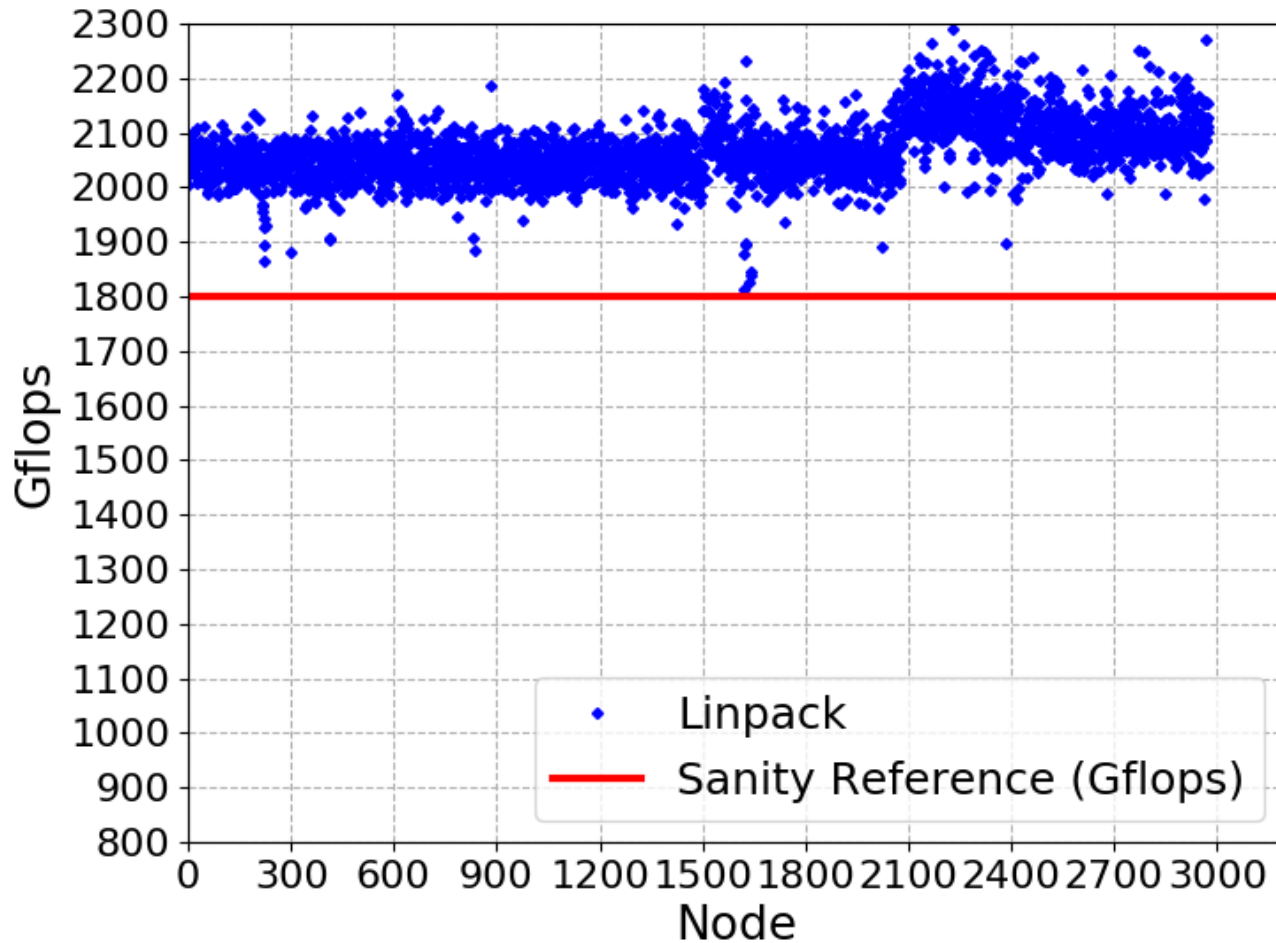


- Tests were performed during production and launched on March 31st
- Tests: linpack and stream on each single node of SKL
- 2975 were tested in time for this Ticket Meeting (only EF nodes tested)
- No Switch-level Linpack tests with production runs
- Slow nodes have been removed from production for investigation and fixes

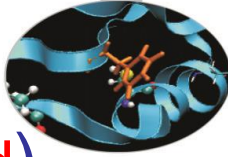
Linpack SKL



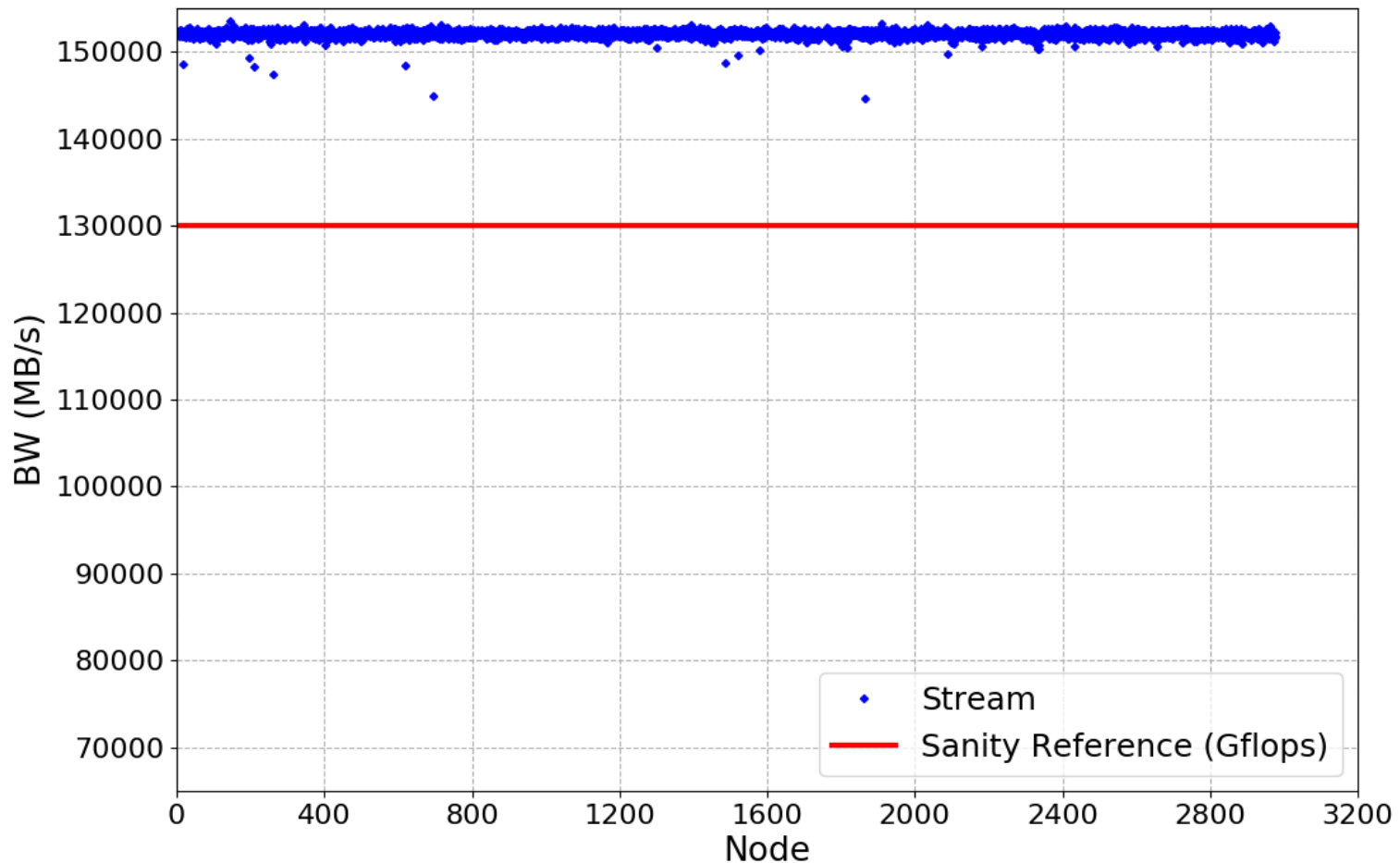
- Sanity threshold: 1800 Gflops (one slow node found)



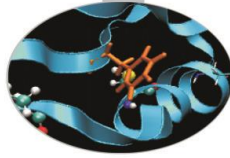
Stream SKL



- Sanity threshold: 130000 MB/s (no slow nodes found)

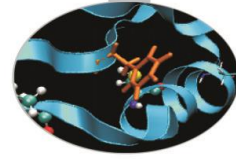


MARCONI100 – March 2022

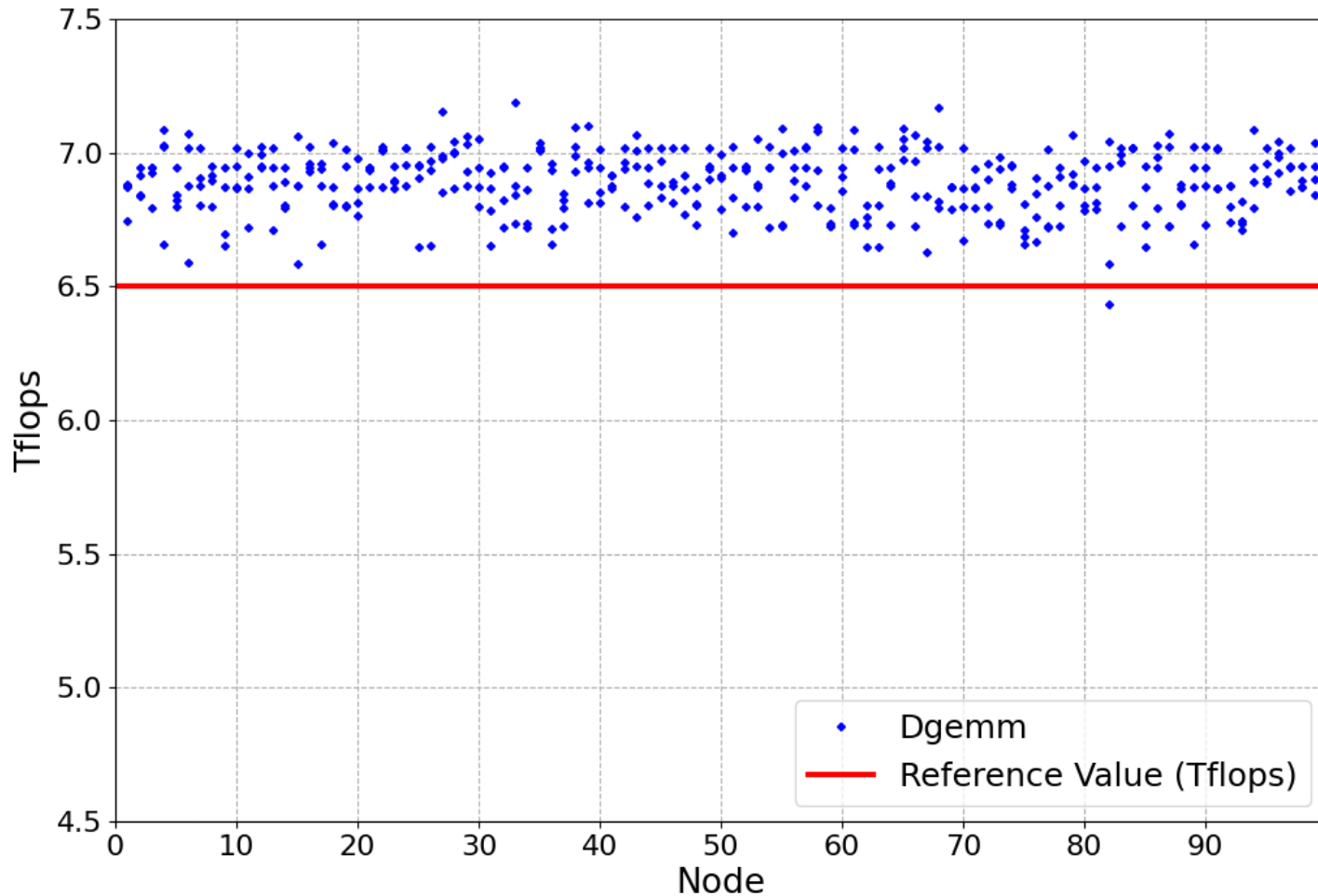


- Sanity checks were performed during maintenance and launched on March 30th
- Tests: dgemm, stream-GPU, nvlink and p2p on each single node of M100
- Results from the nodes of EUROFusion partition are shown

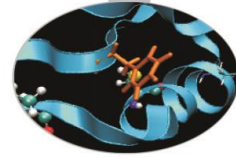
Dgemmm



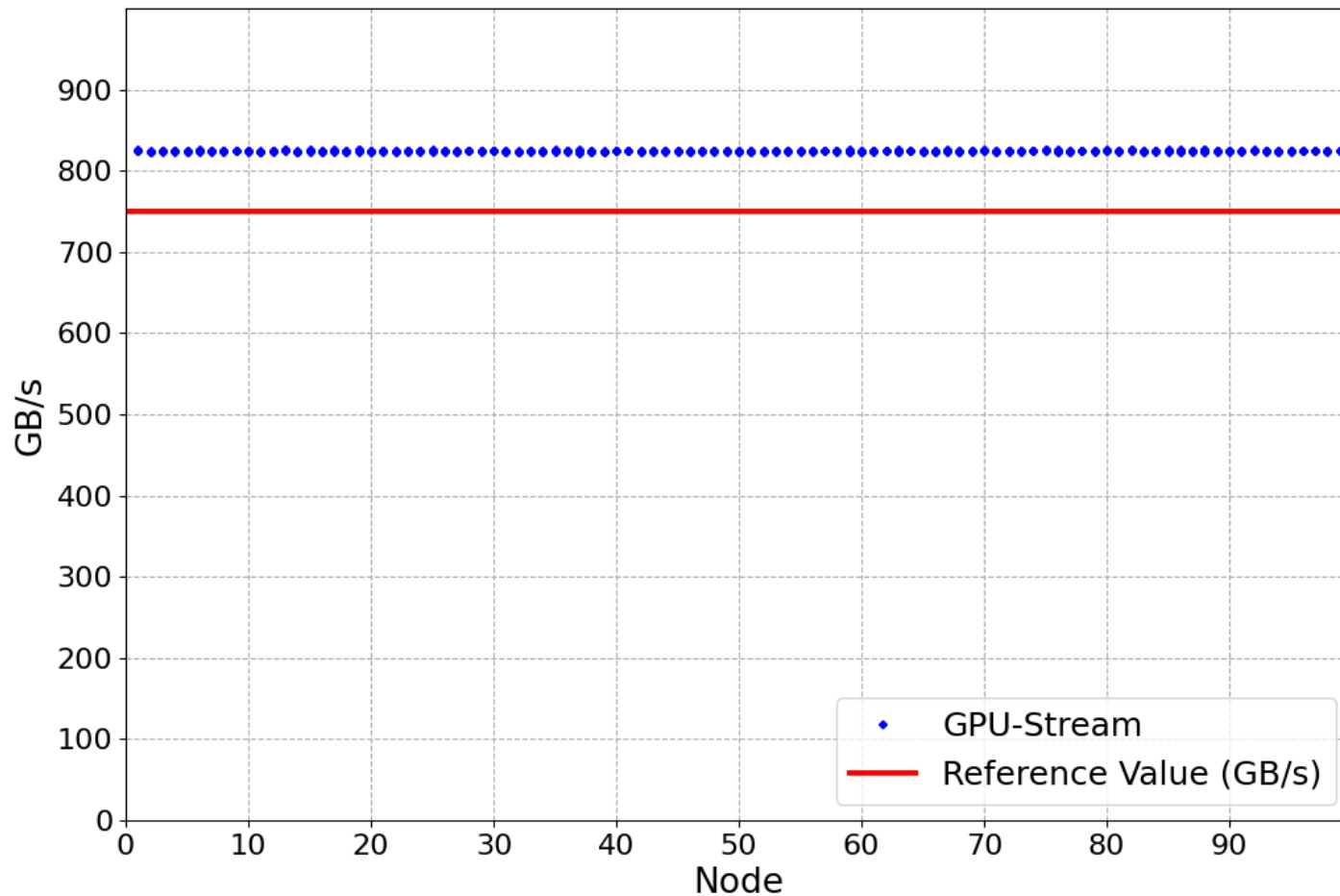
- Sanity threshold: 6.5 Tflops (one slow GPU found)



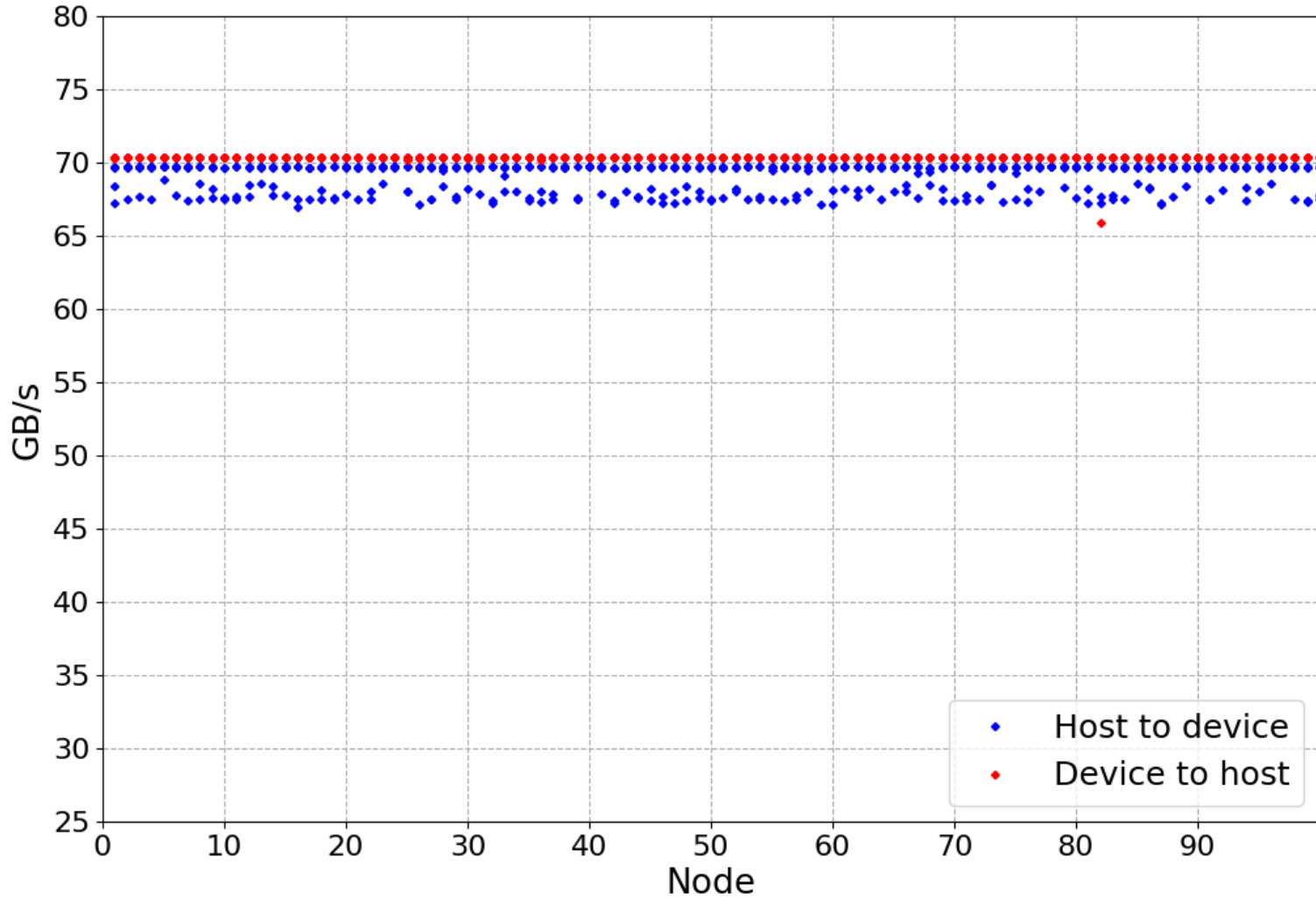
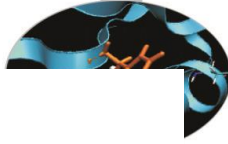
Stream-GPU



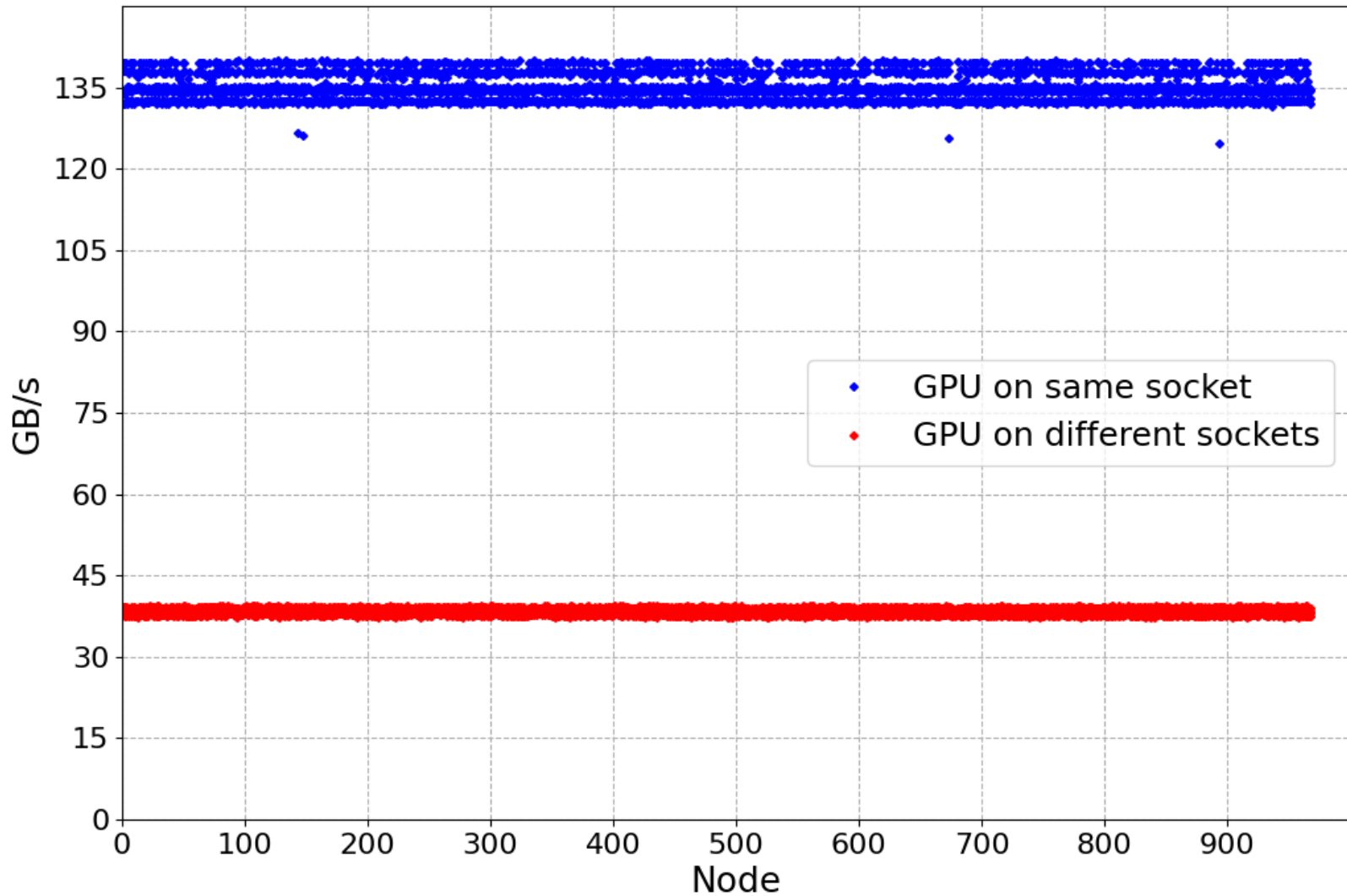
- Sanity threshold 750 Gb/s (no slow GPUs found)



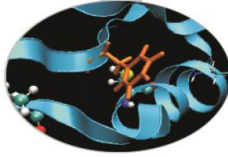
Nvlink-GPU



P2P-GPU

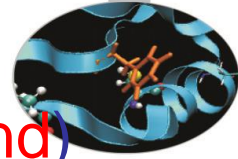


MARCONI100 – April 2022

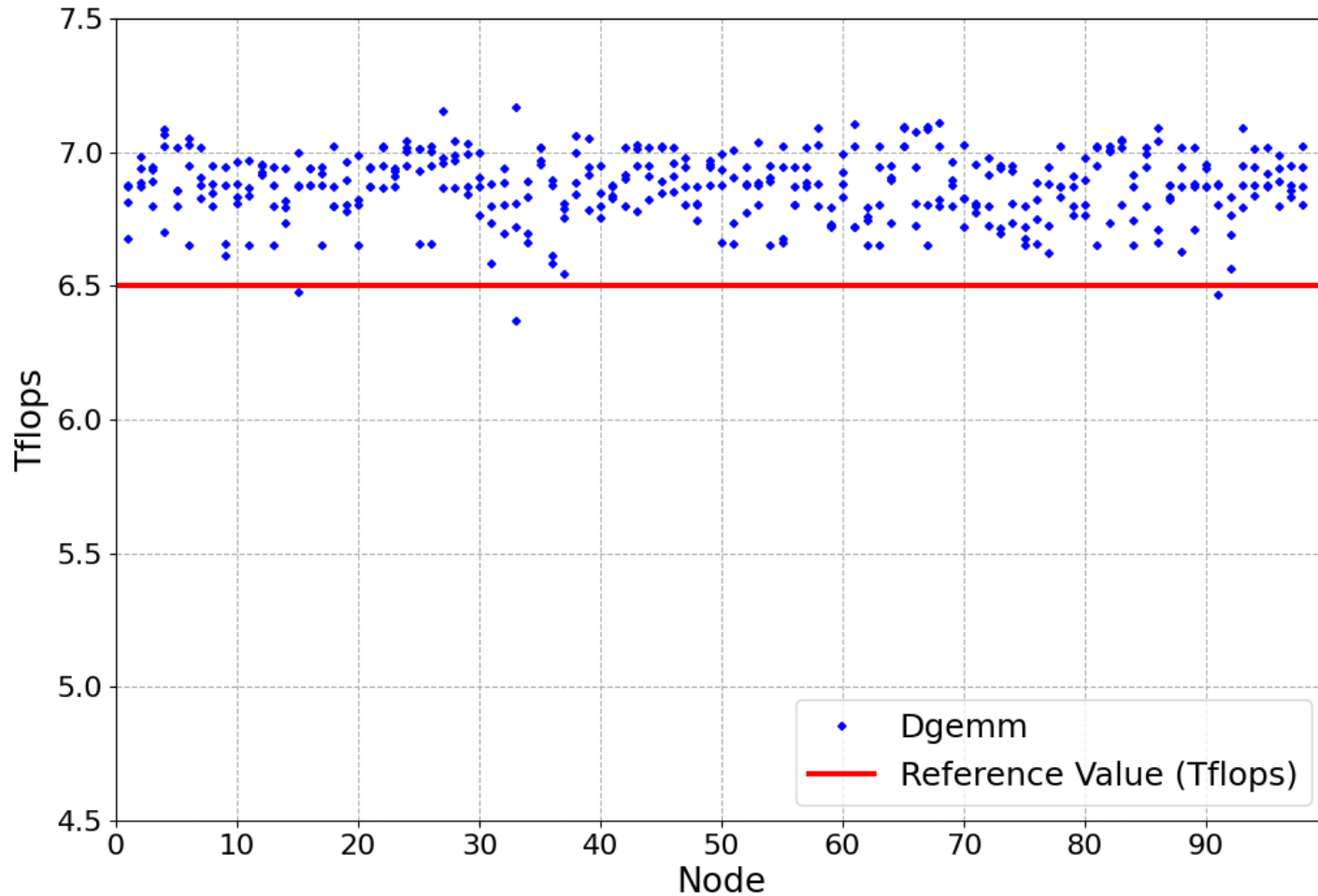


- Sanity checks were performed during production and launched on April 7th
- Tests: dgemm, stream-GPU, nvlink and p2p on each single node of M100
- Results from the nodes of EUROFusion partition are shown

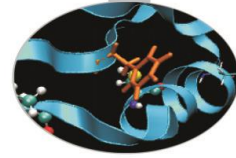
Dgemmm



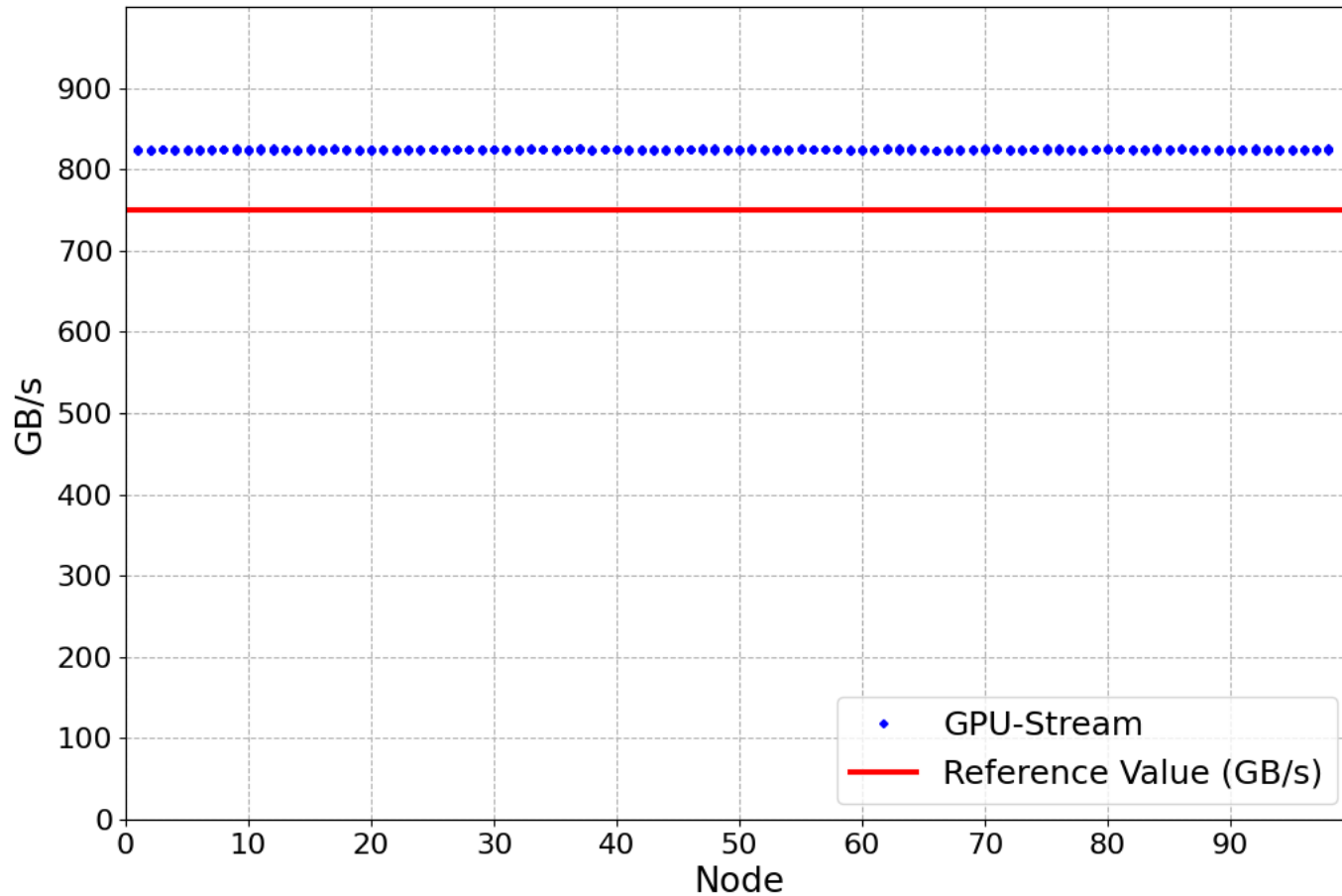
- Sanity threshold: 6.5 Tflops (three slow GPUs found)



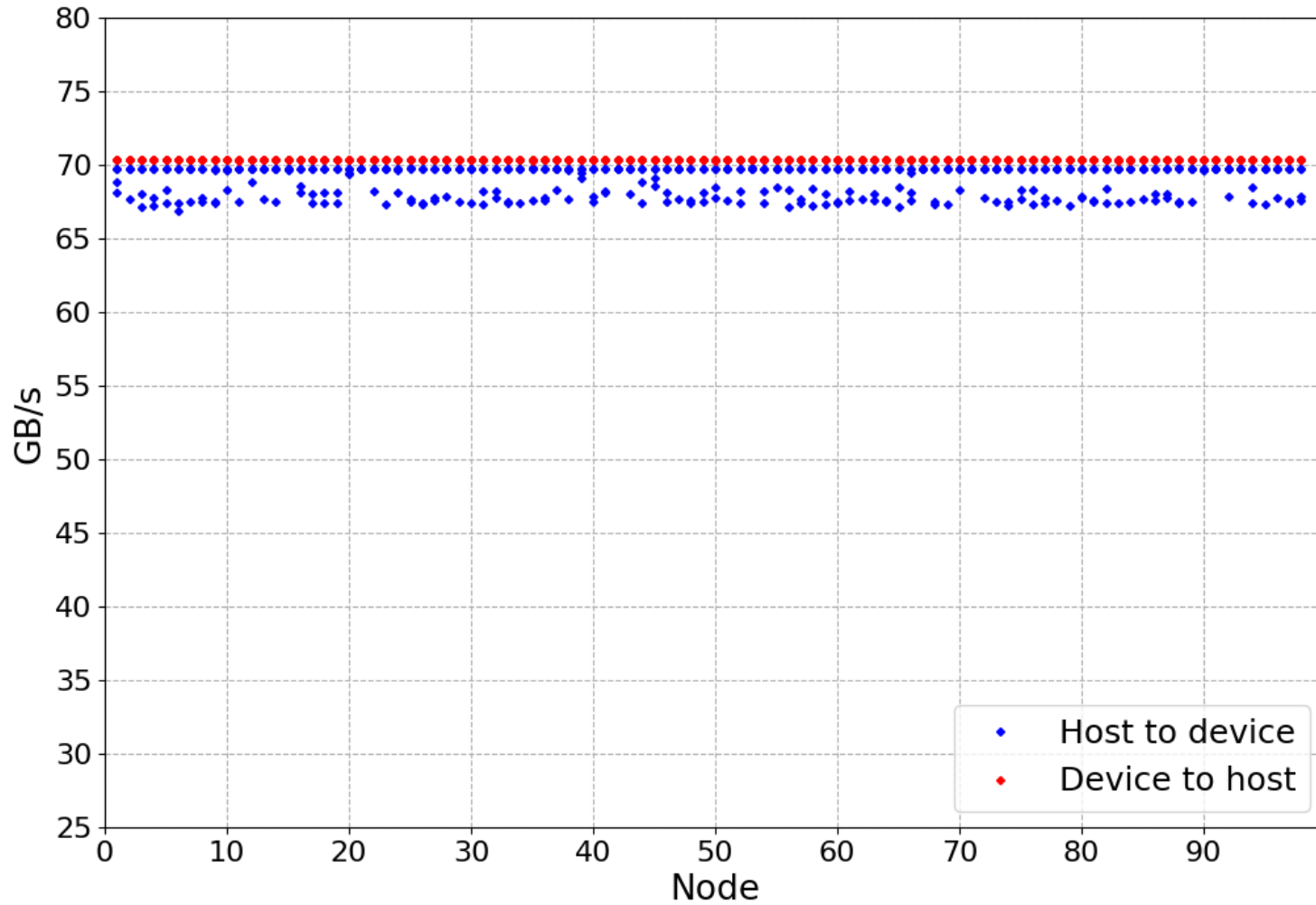
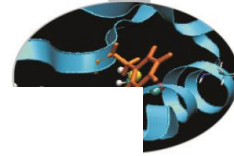
Stream-GPU



- Sanity threshold 750 Gb/s (no slow GPUs found)



Nvlink-GPU



P2P-GPU

