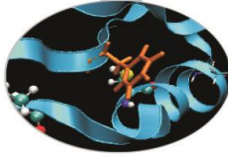


Outline

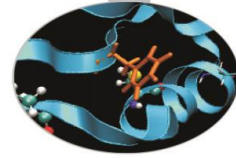
- MARCONI: Sanity checks launched during maintenance on April and May and production on April (linpack, stream)
- MARCONI100: Sanity checks on GPU (dgemm, stream, nvlink, p2p) during maintenance on April and production on May

MARCONI – April 2022

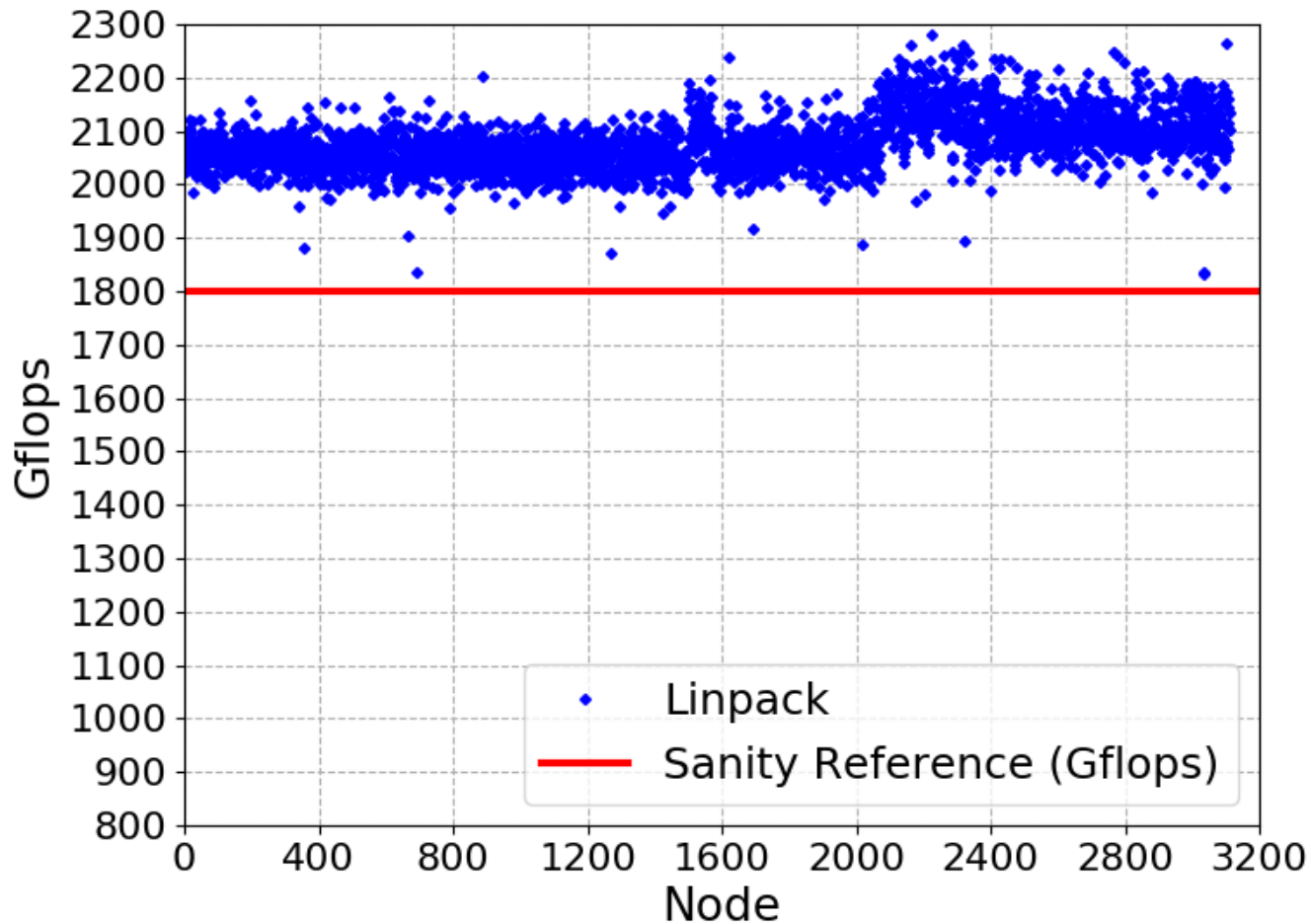


- Tests were performed during maintenance on April 12th
- Tests: lincpack and stream on each single node of SKL
- Switch-level Lincpack tests were performed during maintenance
- Slow nodes have been removed from production for investigation and fixes

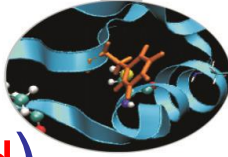
Linpack SKL



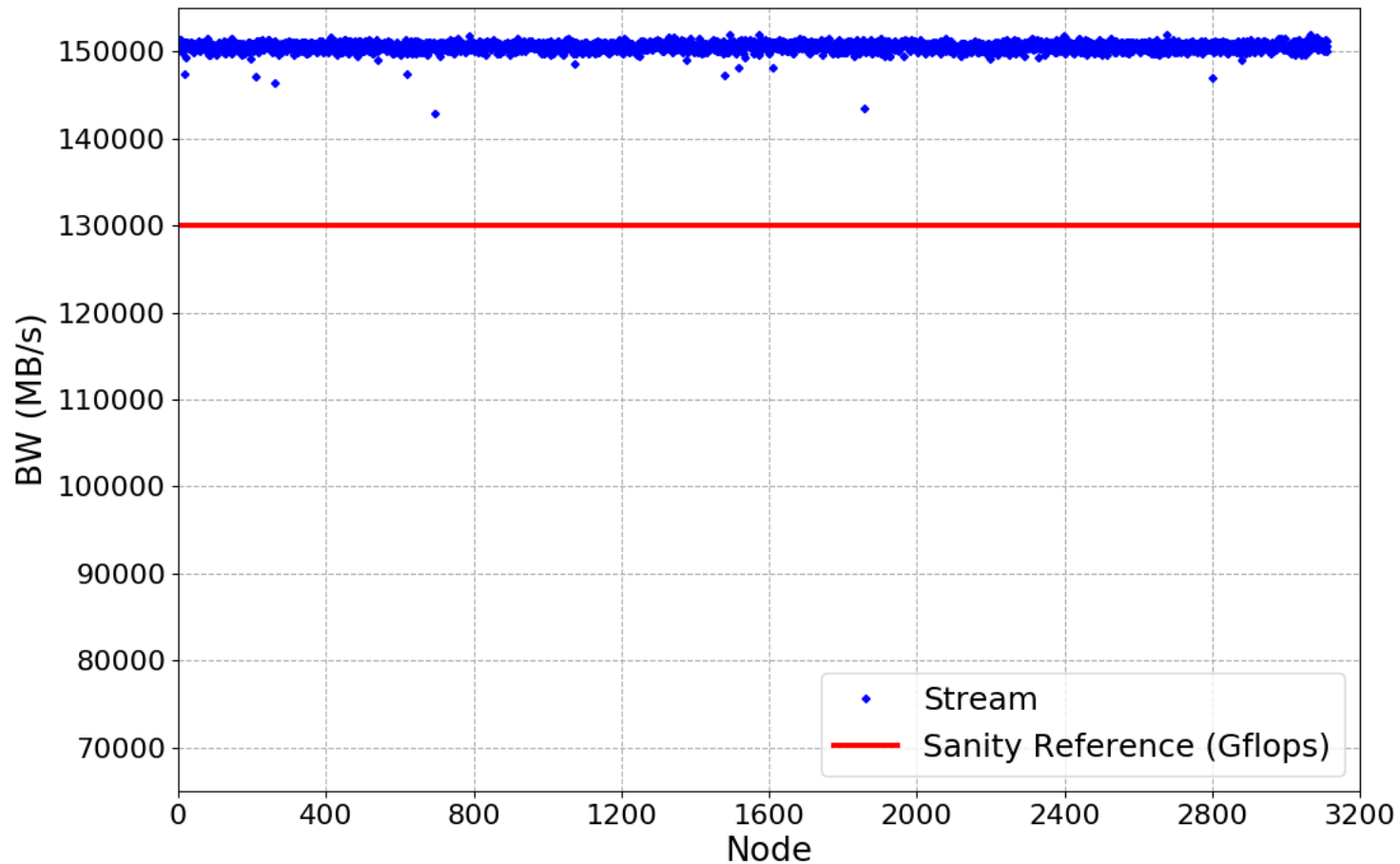
- Sanity threshold: 1800 Gflops (no slow nodes found)



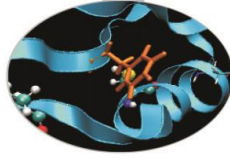
Stream SKL



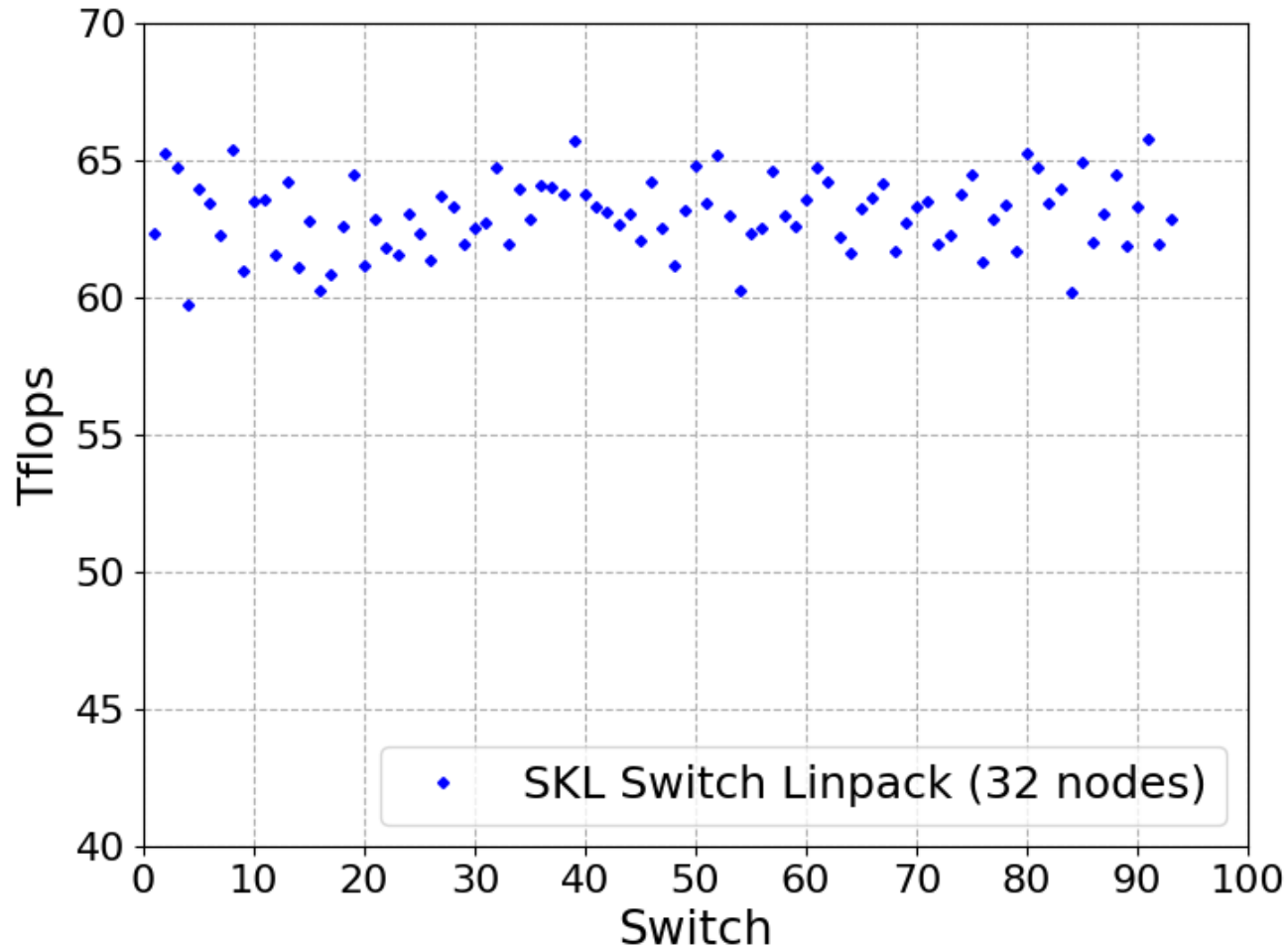
- Sanity threshold: 130000 MB/s (no slow nodes found)



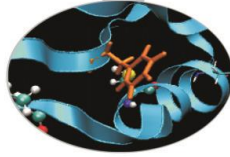
Switch-level Linpack SKL



- 87 switches tested
- Overall stable performance

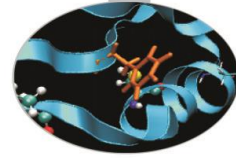


MARCONI – April 2022

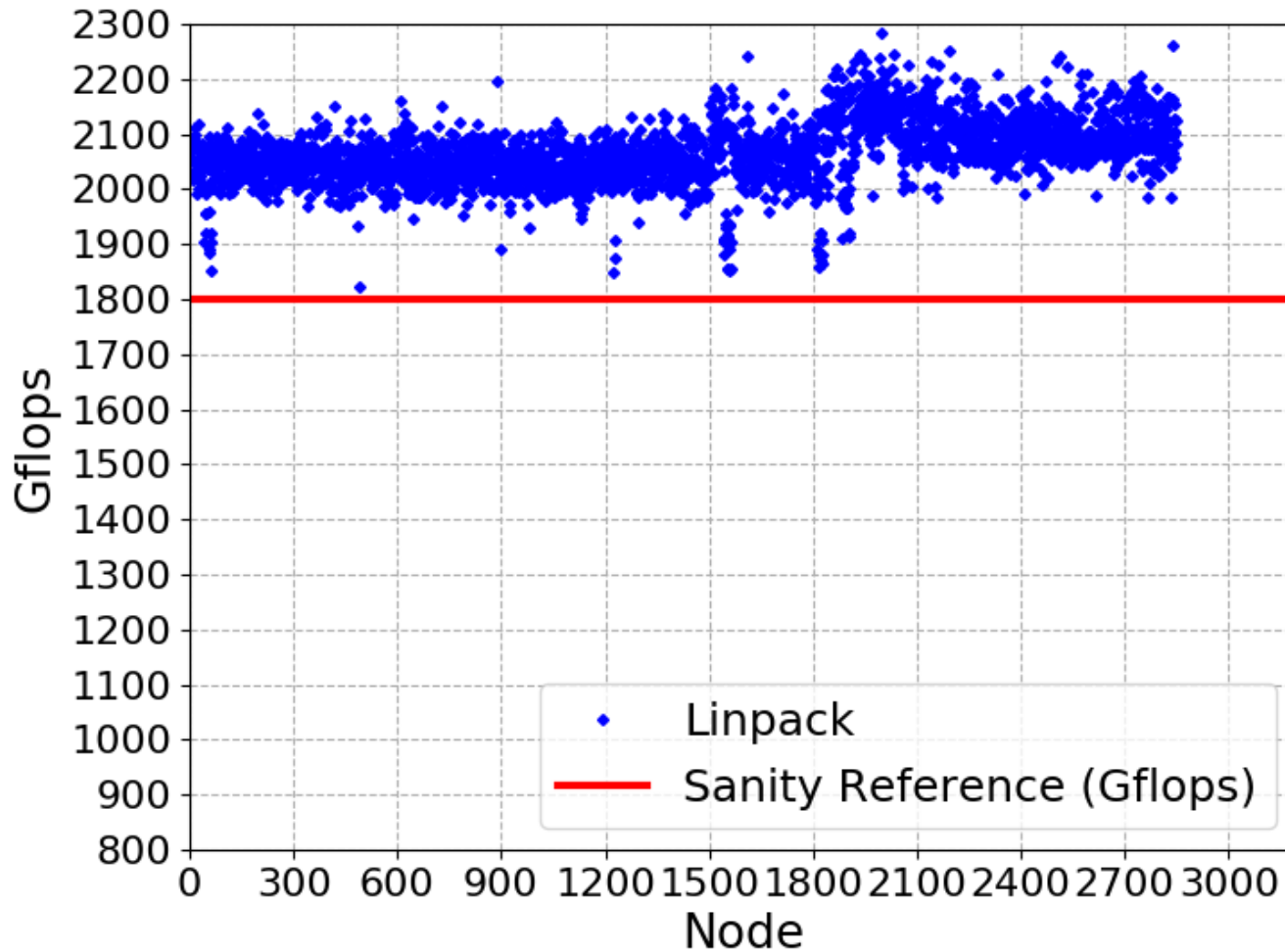


- Tests were performed during production and launched on April 28th
- Tests: linpack and stream on each single node of SKL
- 2848 were tested in time for this Ticket Meeting (only EF nodes tested)
- No Switch-level Linpack tests with production runs
- Slow nodes have been removed from production for investigation and fixes

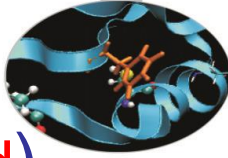
Linpack SKL



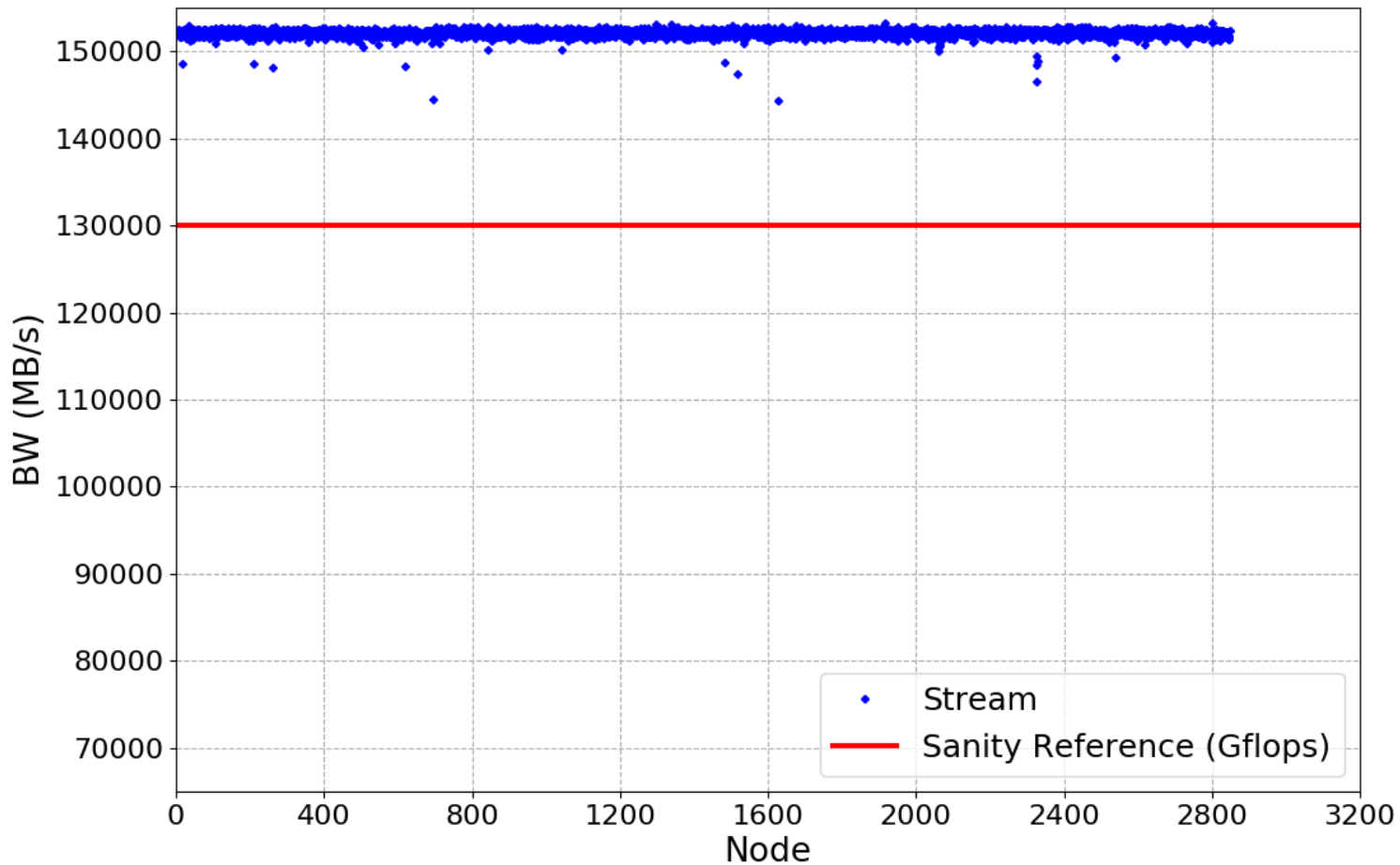
- Sanity threshold: 1800 Gflops (one slow node found)



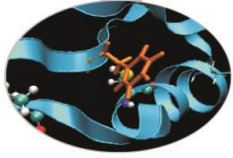
Stream SKL



- Sanity threshold: 130000 MB/s (no slow nodes found)

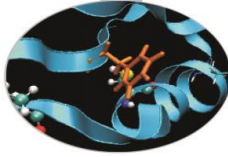


MARCONI – May 2022

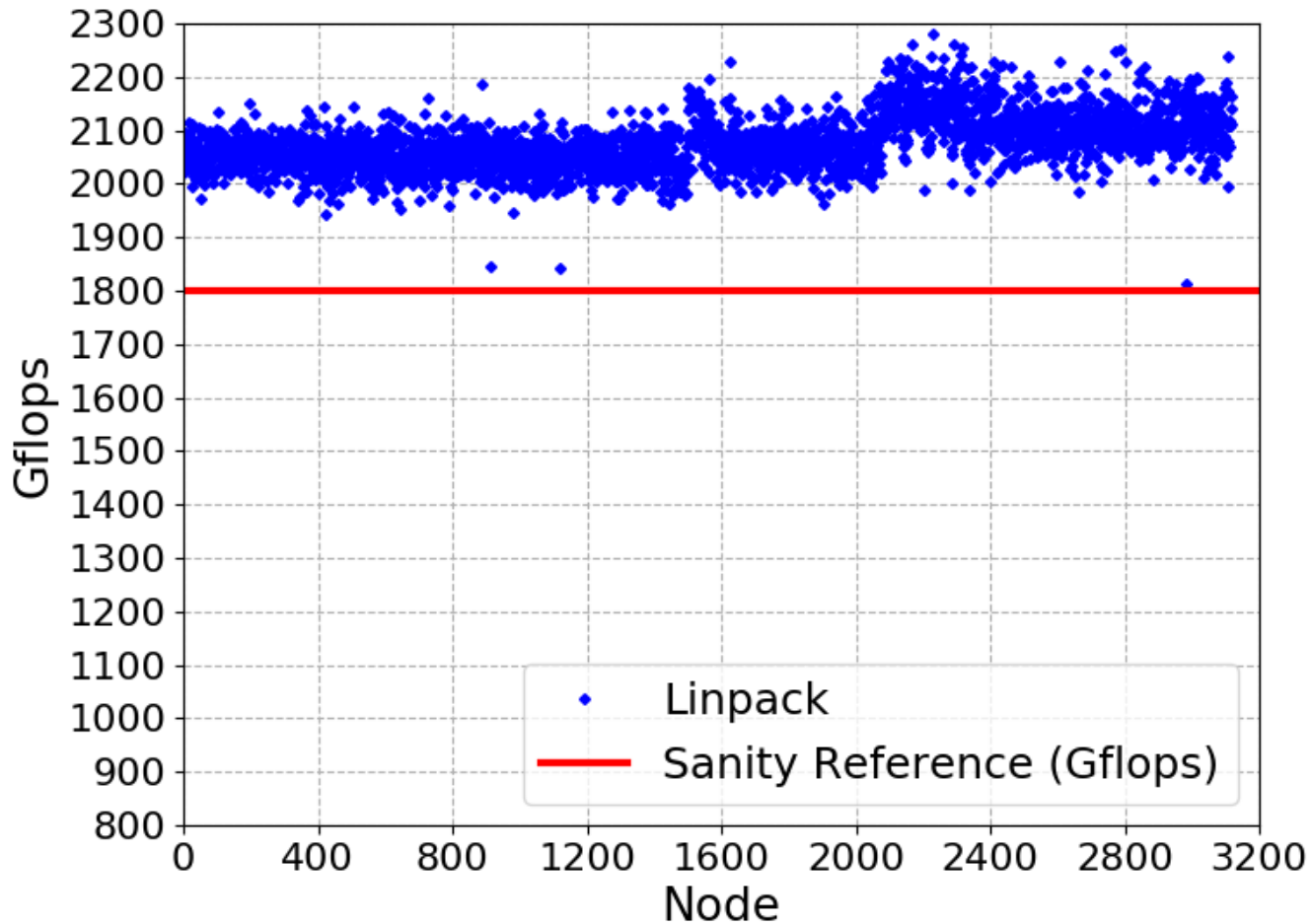


- Tests were performed during maintenance on May 10th
- Tests: lincpack and stream on each single node of SKL
- Switch-level Lincpack tests were performed during maintenance
- Slow nodes have been removed from production for investigation and fixes

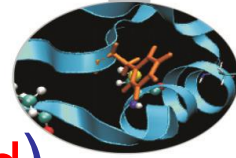
Linpack SKL



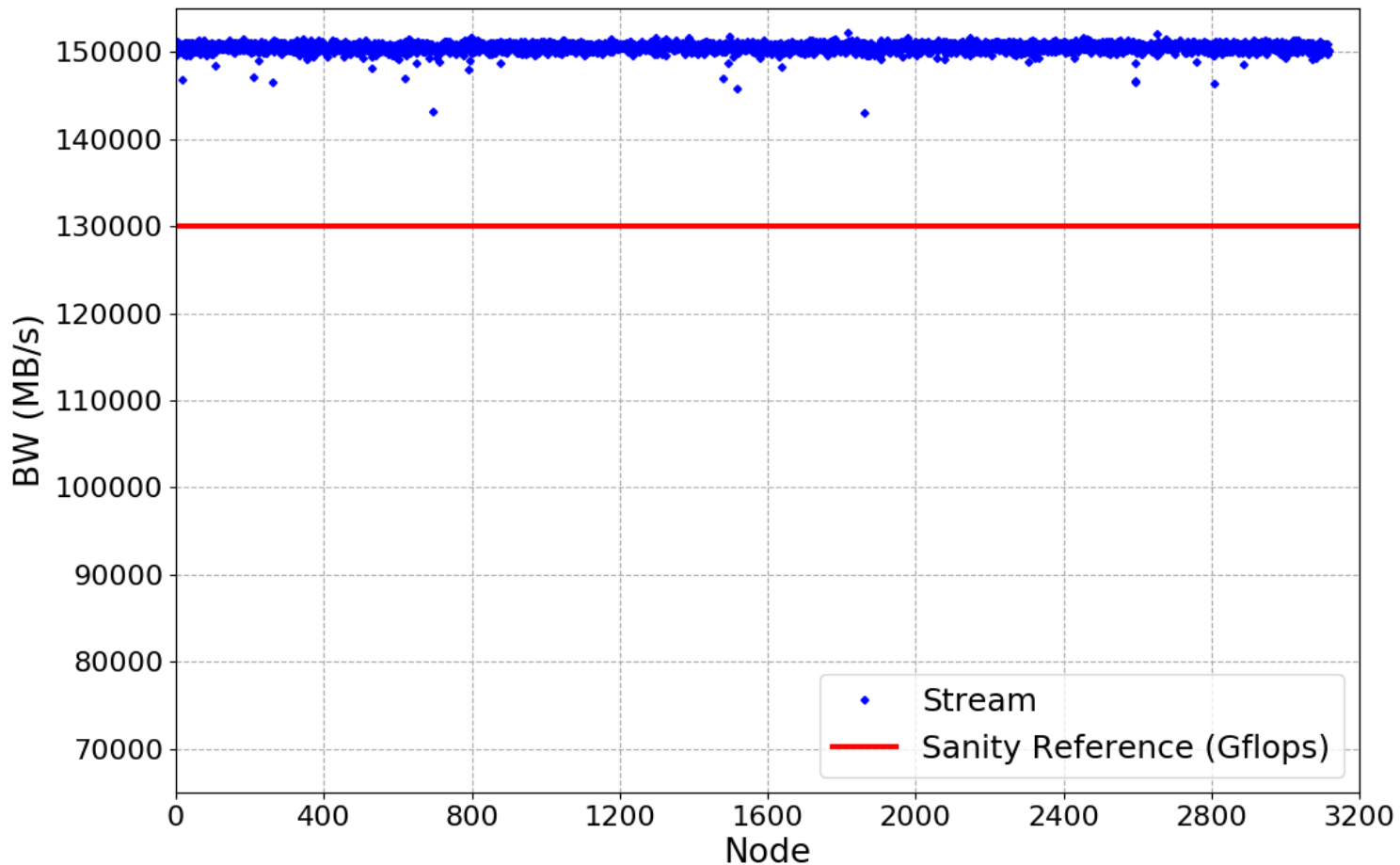
- Sanity threshold: 1800 Gflops (no slow nodes found)



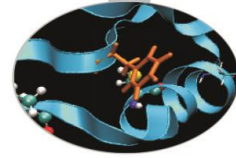
Stream SKL



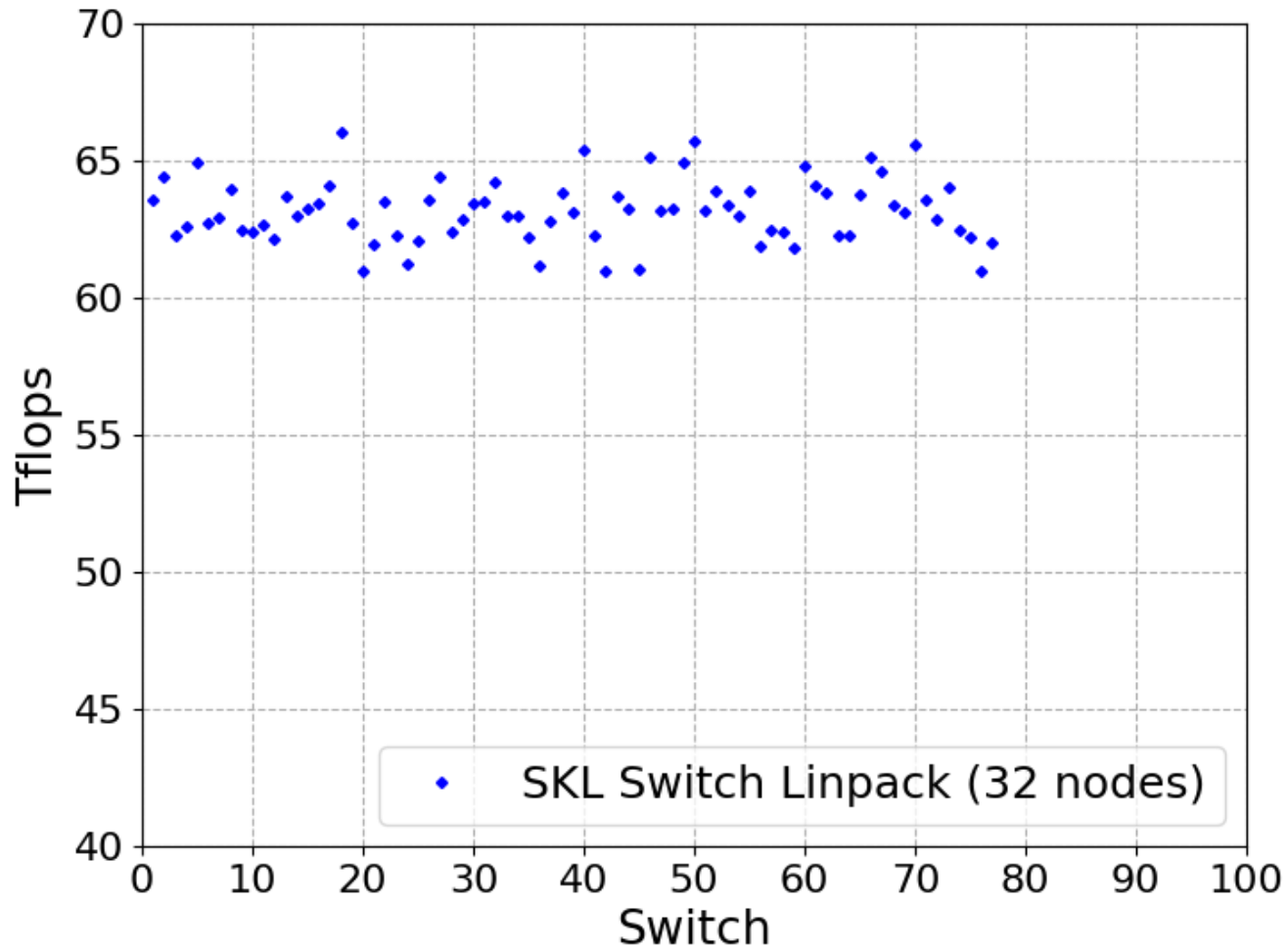
- Sanity threshold: 130000 MB/s (no slow nodes found)



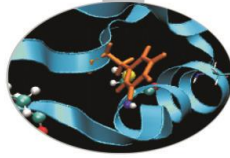
Switch-level Linpack SKL



- 77 switches tested
- Overall stable performance

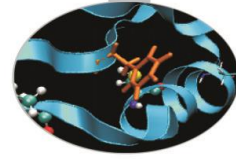


MARCONI100 – April 2022

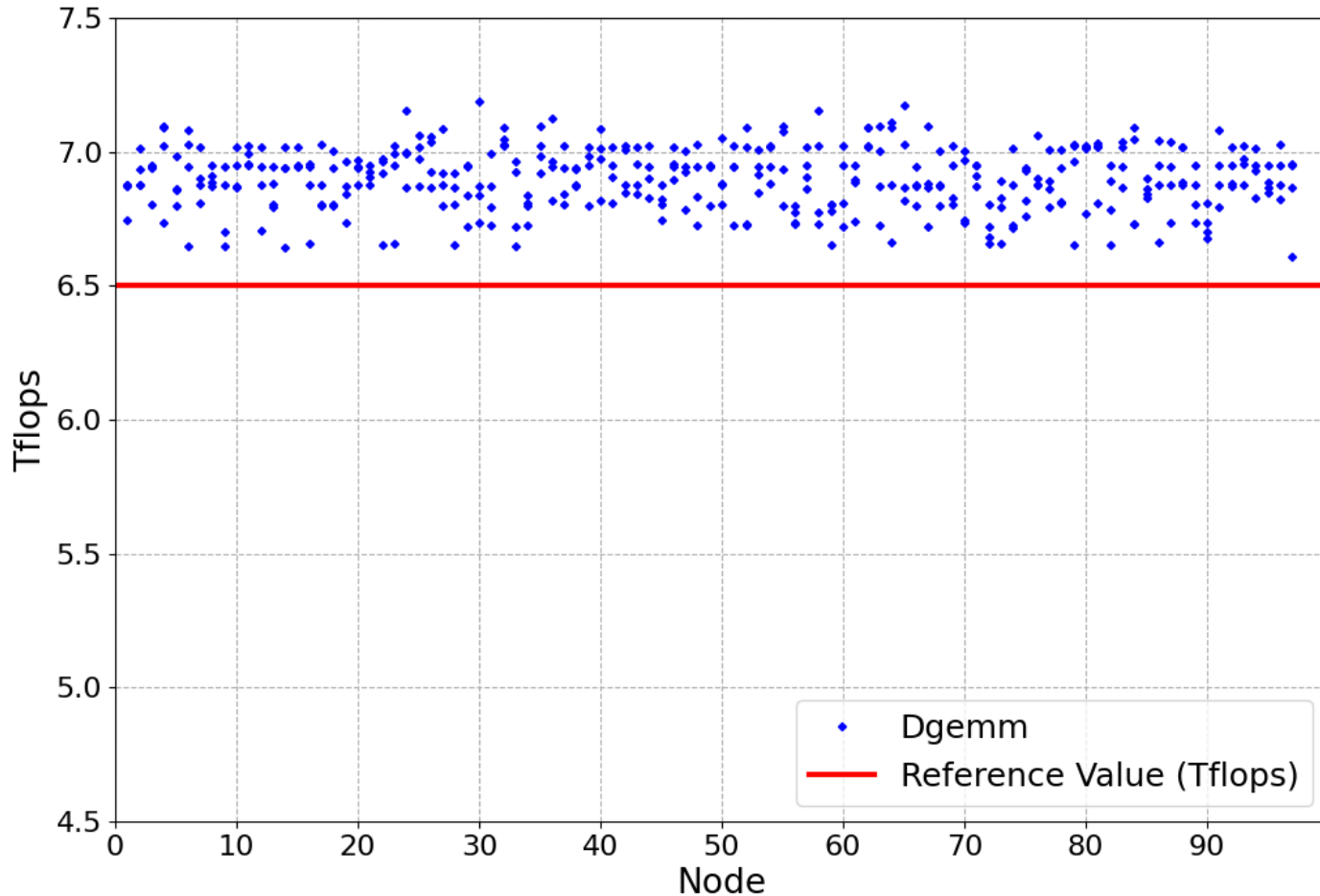


- Sanity checks were performed during maintenance and launched on April 26th
- Tests: dgemm, stream-GPU, nvlink and p2p on each single node of M100
- Results from the nodes of EUROFusion partition are shown

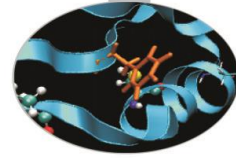
Dgemmm



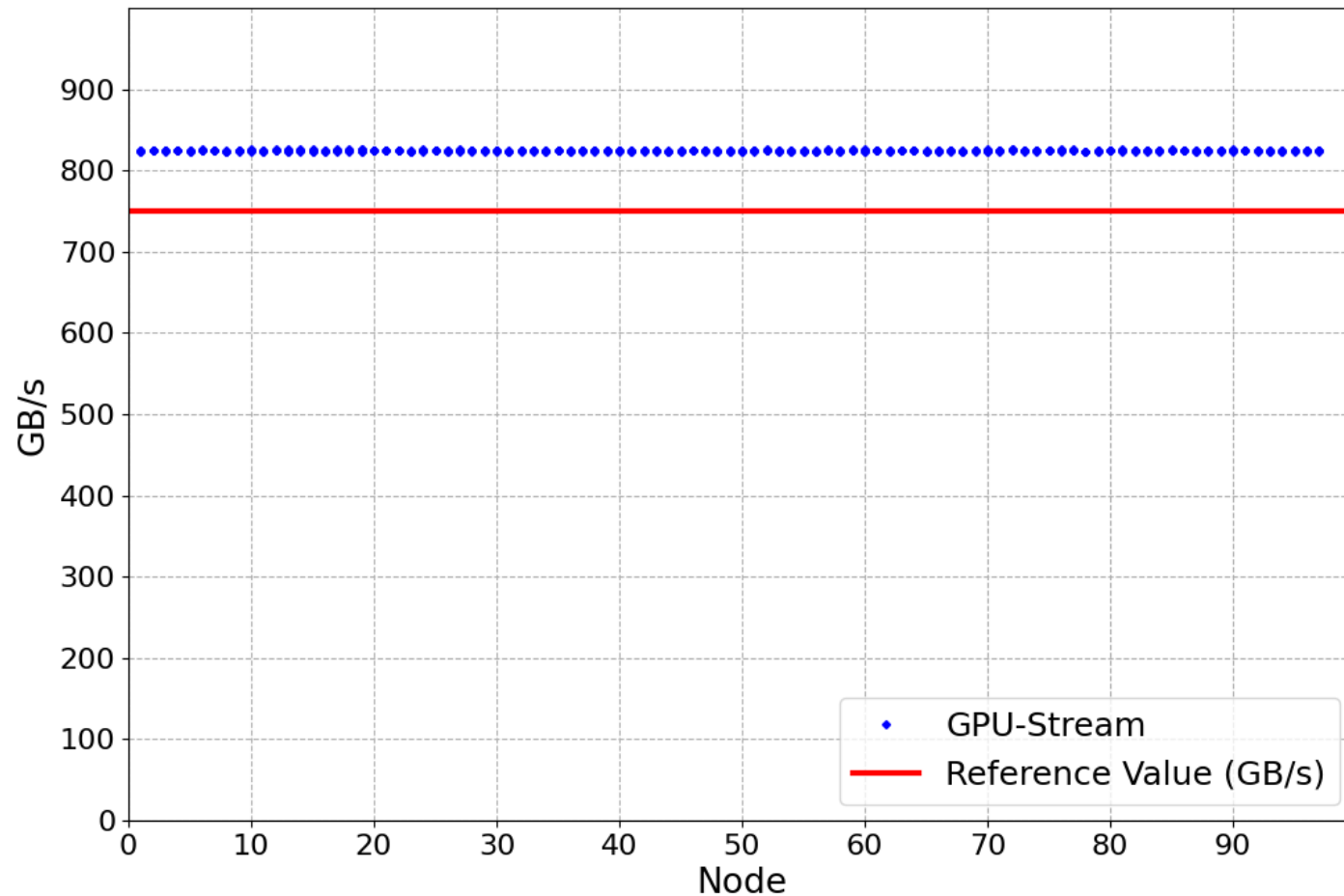
- Sanity threshold: 6.5 Tflops (no slow GPU found)



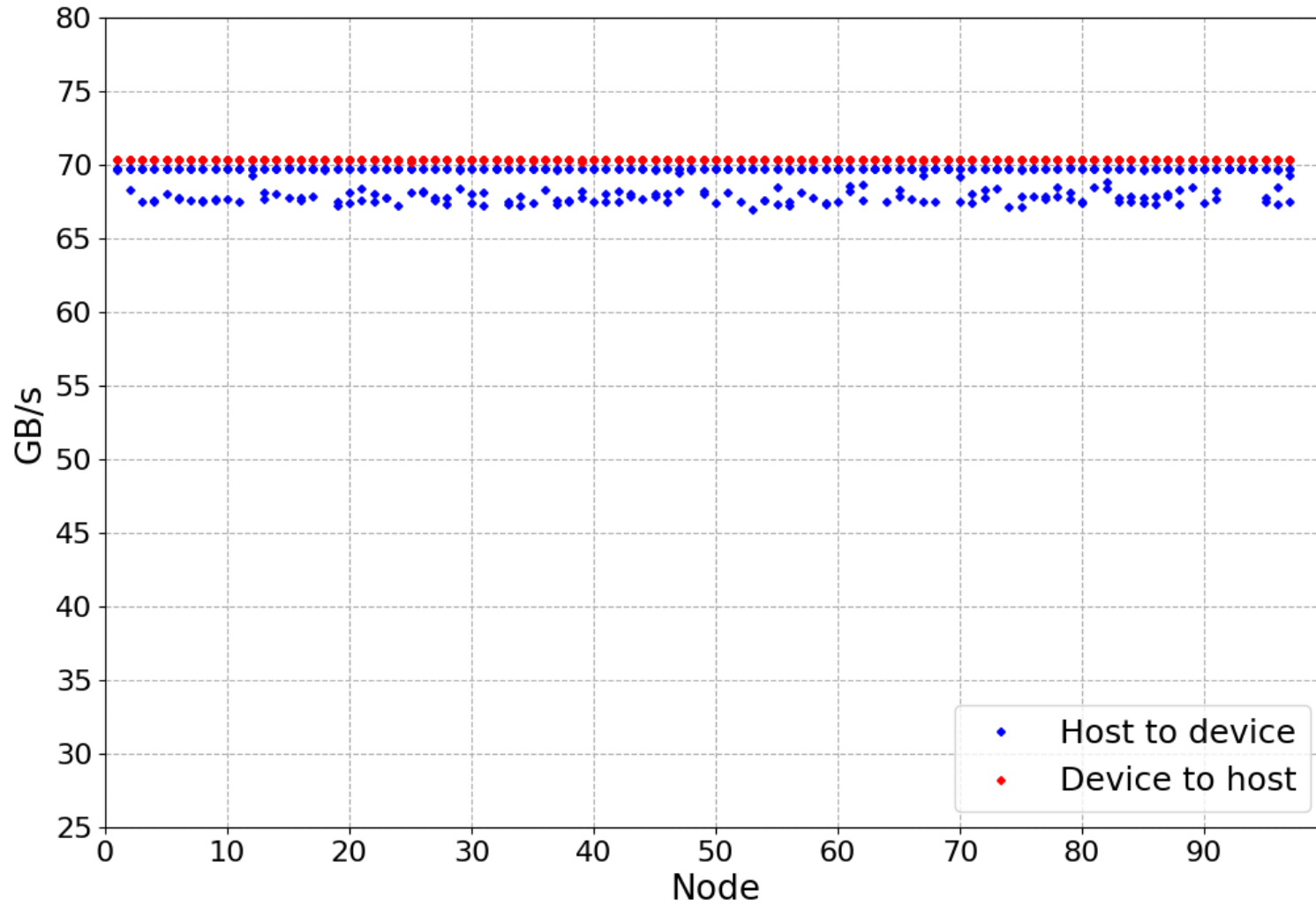
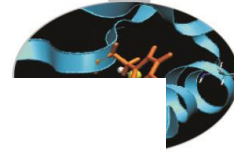
Stream-GPU



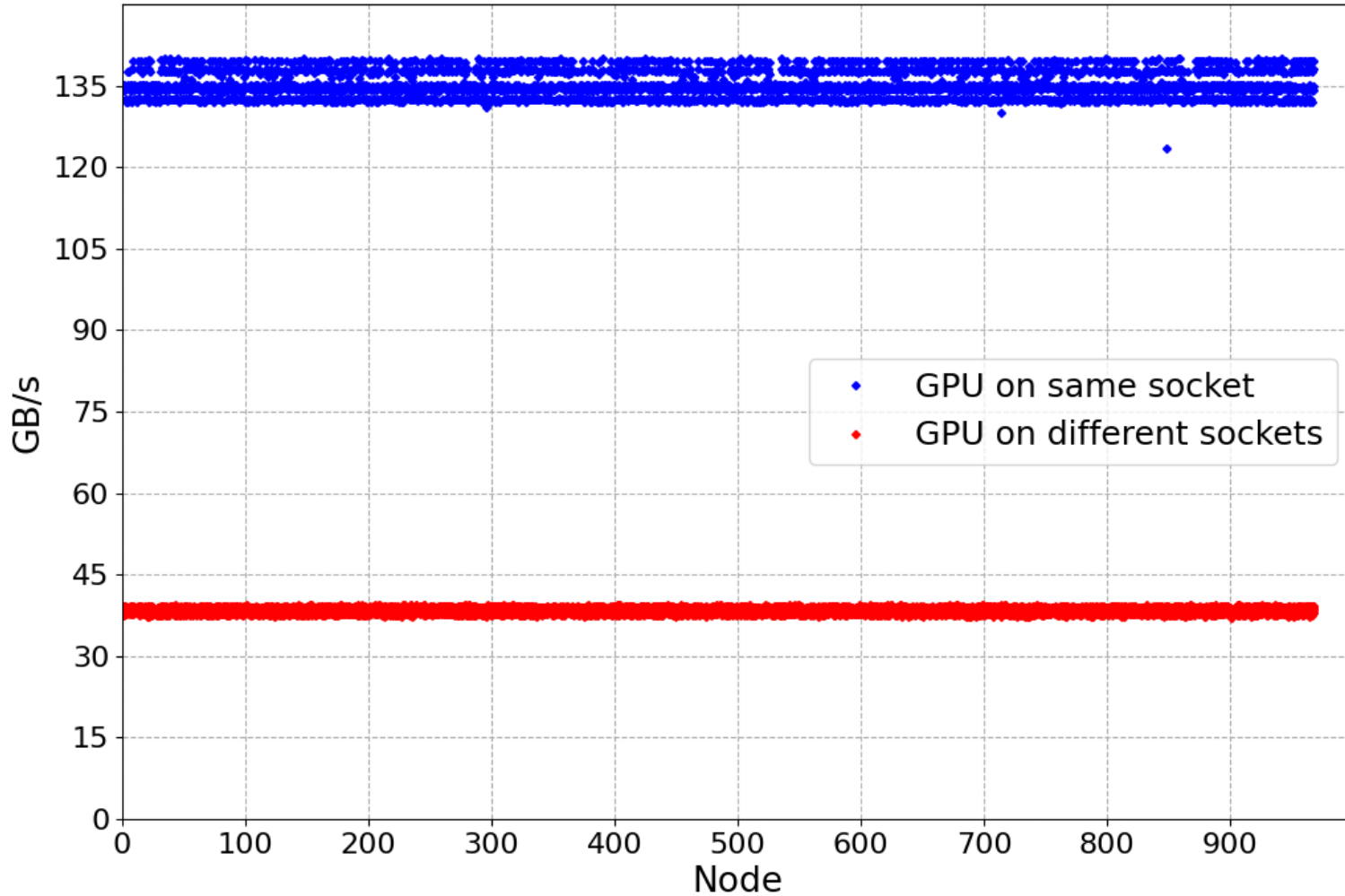
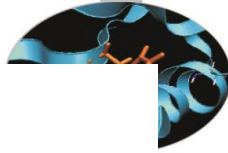
- Sanity threshold 750 Gb/s (no slow GPUs found)



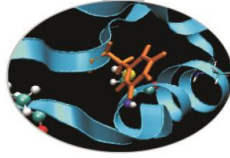
Nvlink-GPU



P2P-GPU



MARCONI100 – May 2022



- Sanity checks were performed during production and launched on May 11th
- Tests: dgemm, stream-GPU, nvlink and p2p on each single node of M100
- Results from the nodes of EURO Fusion partition are shown
- No plots because of issues in plotting phase, but the checks were fine