



**EUROfusion**

**IST activities in 2023: IBA analysis of JET PFCs – plans**

**WP PWIE SP E: Kick-off meeting, 14th March, 2023**

**Norberto Catarino, Rui Silva, Eduardo Alves**

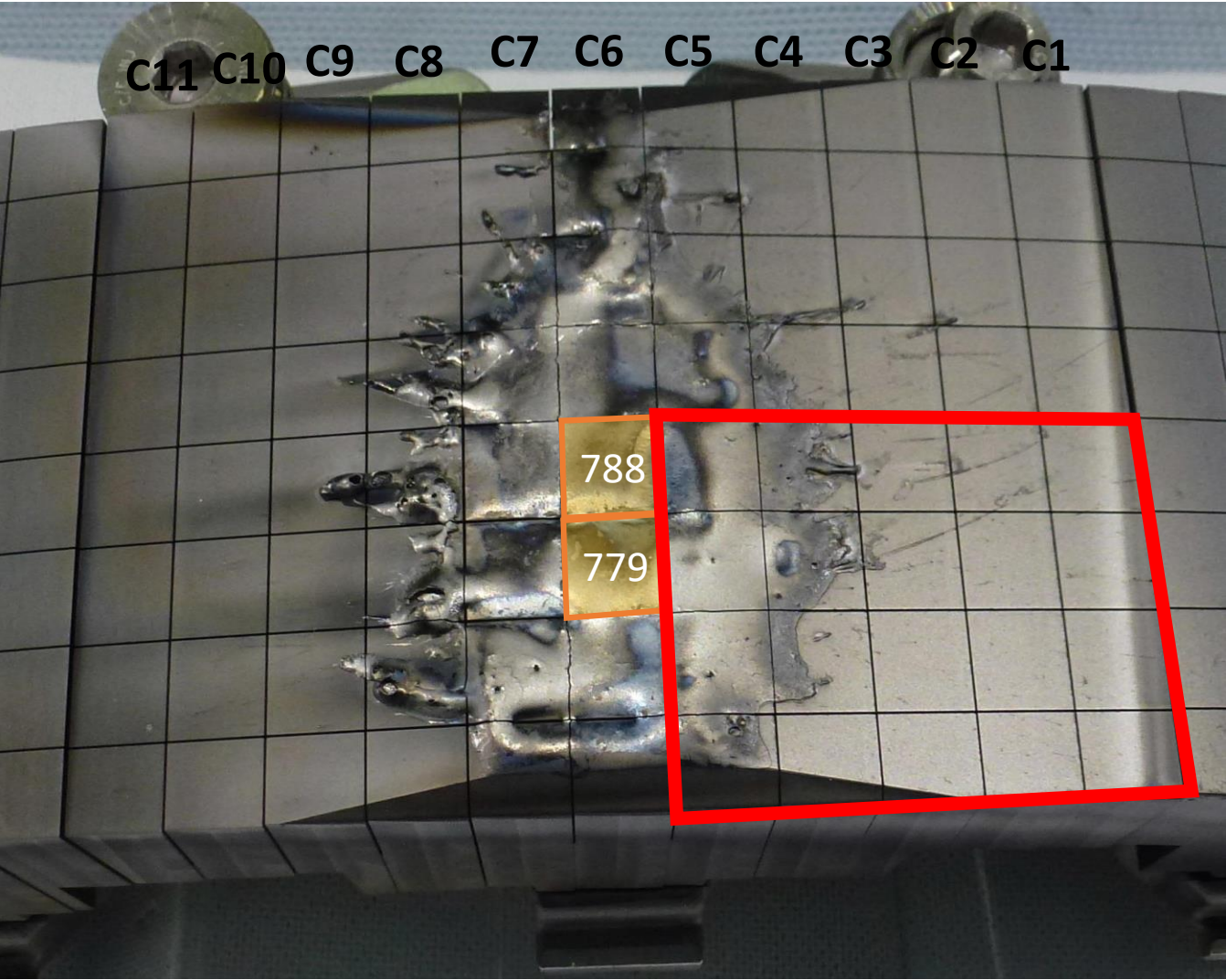


**ipfn**  
INSTITUTO DE PLASMAS  
E FUSÃO NUCLEAR

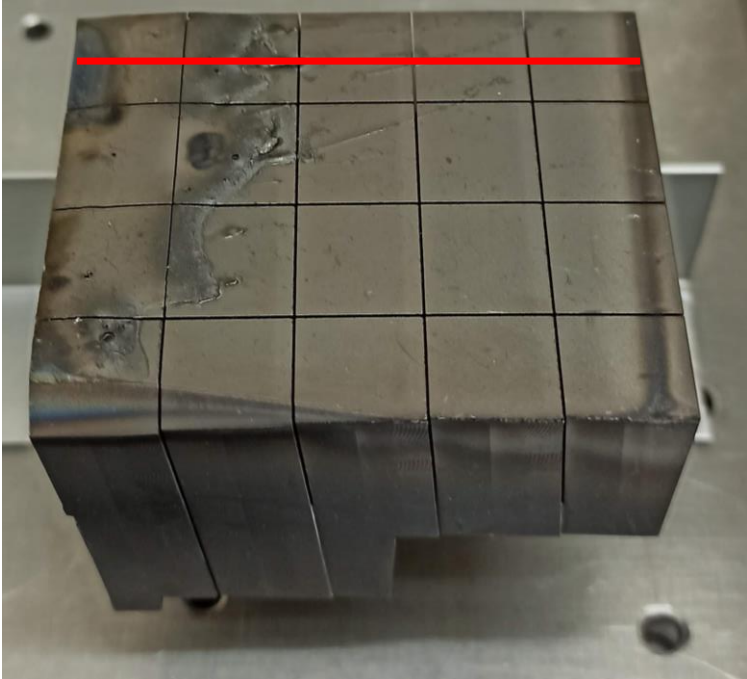
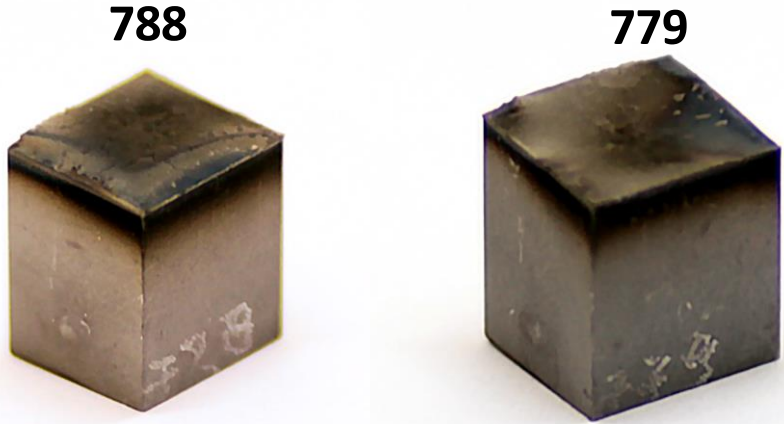


This work has been carried out within the framework of the EUROfusion Consortium, funded by the European Union via the Euratom Research and Training Programme (Grant Agreement No 101052200 — EUROfusion). Views and opinions expressed are however those of the author(s) only and do not necessarily reflect those of the European Union or the European Commission. Neither the European Union nor the European Commission can be held responsible for them.

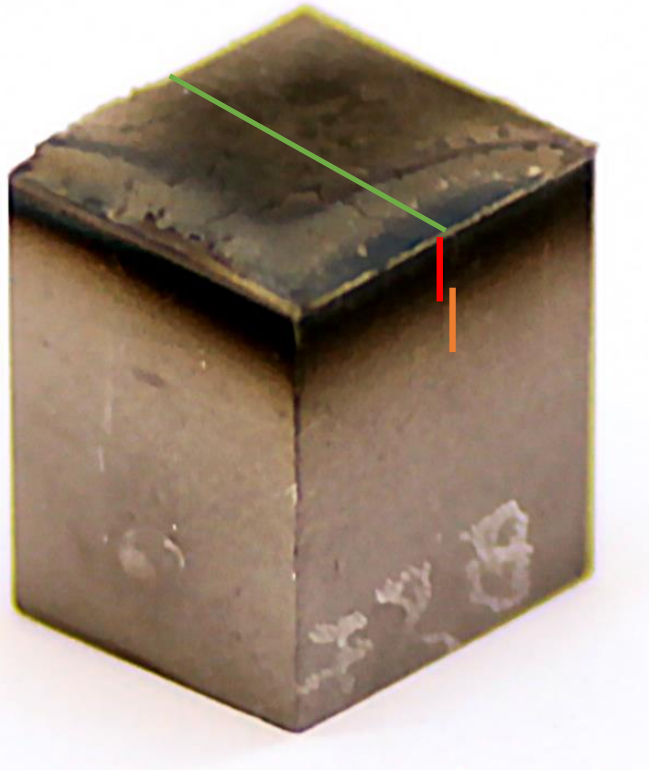
# IWGL tile with runaway electron damage



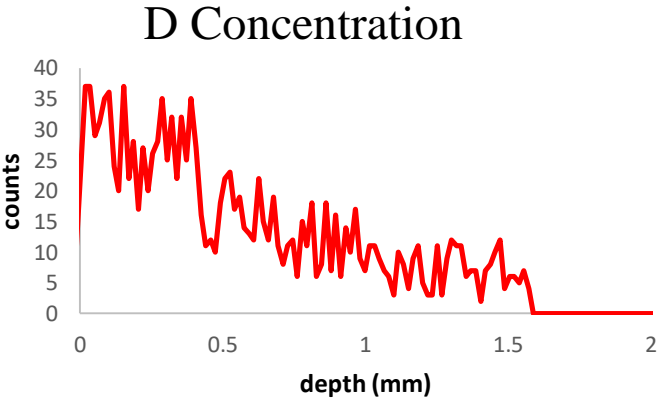
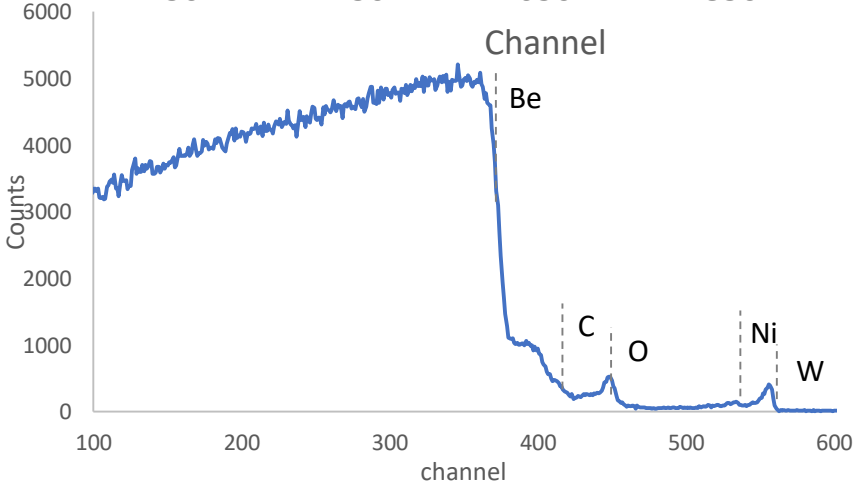
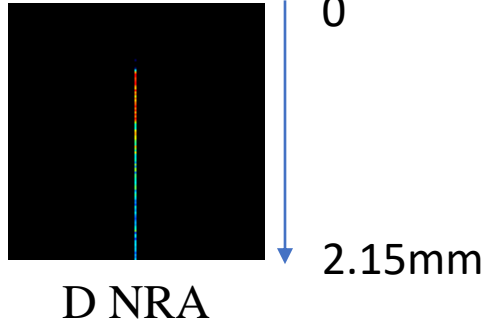
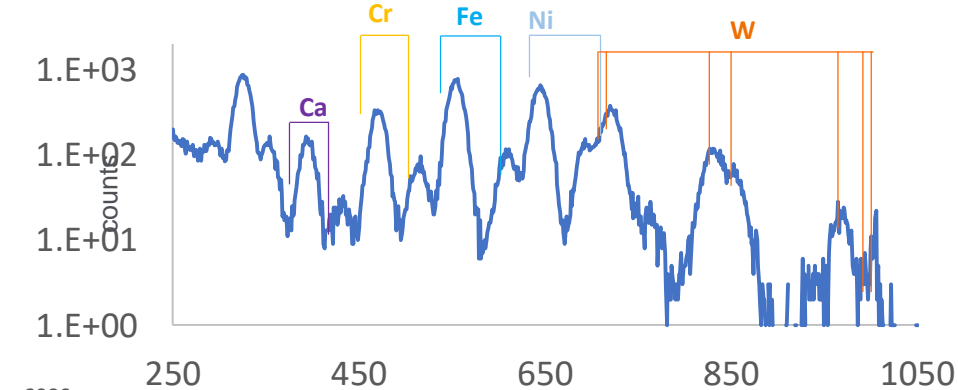
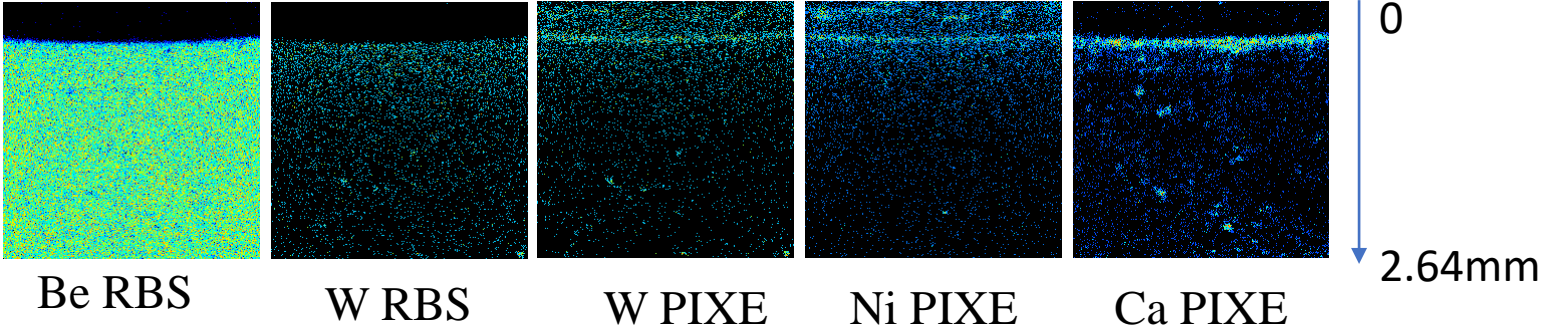
R8  
R7  
R6  
R5  
R4  
R3  
R2  
R1



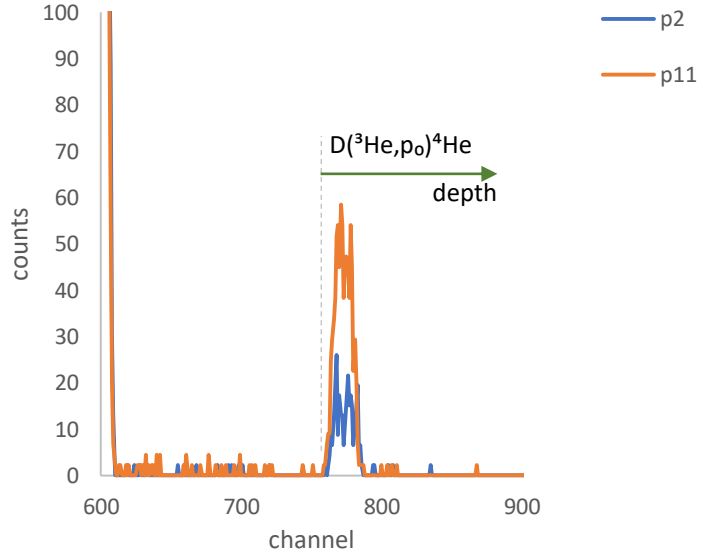
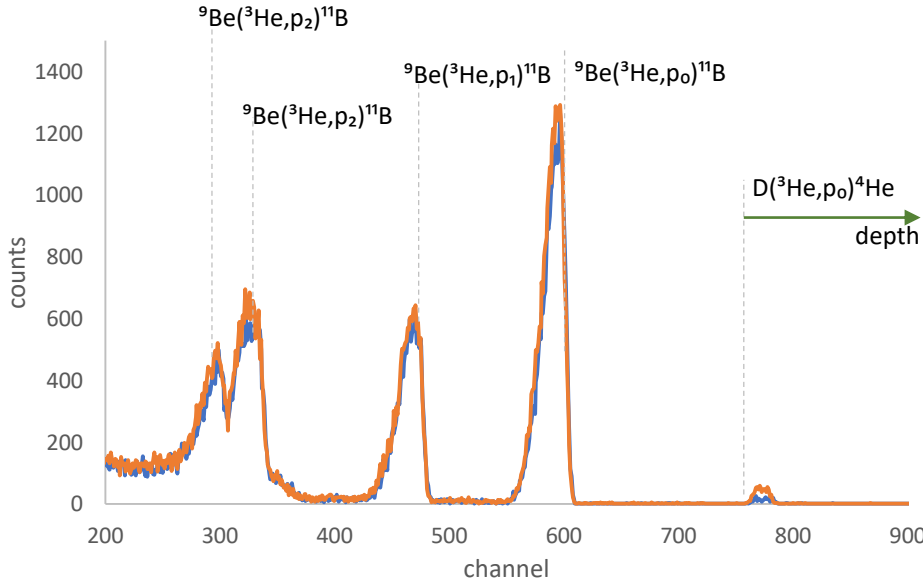
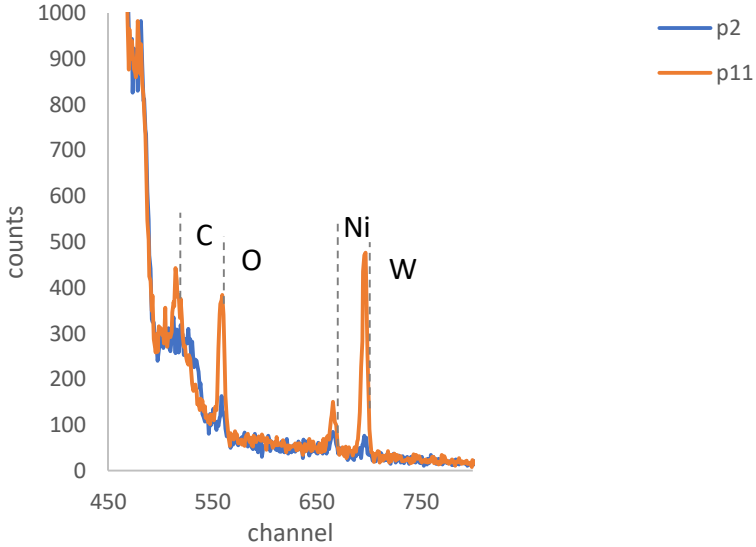
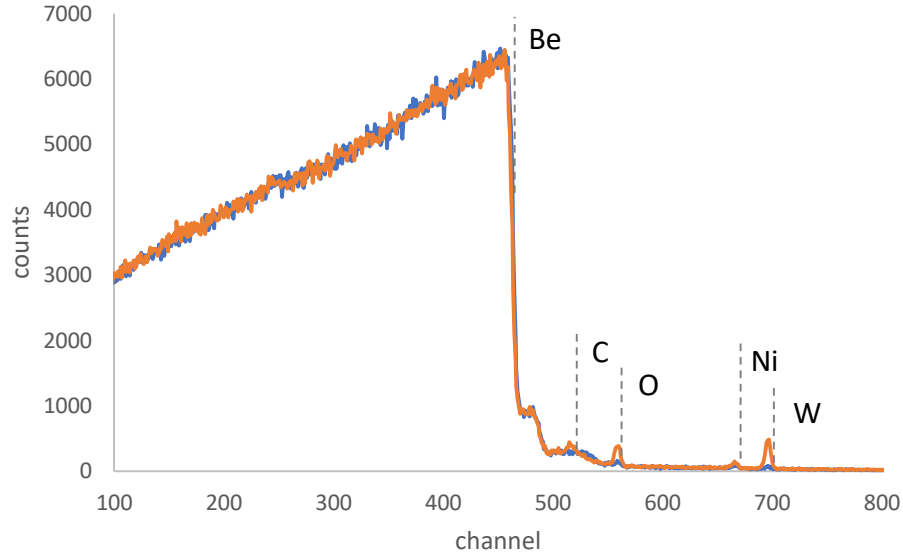
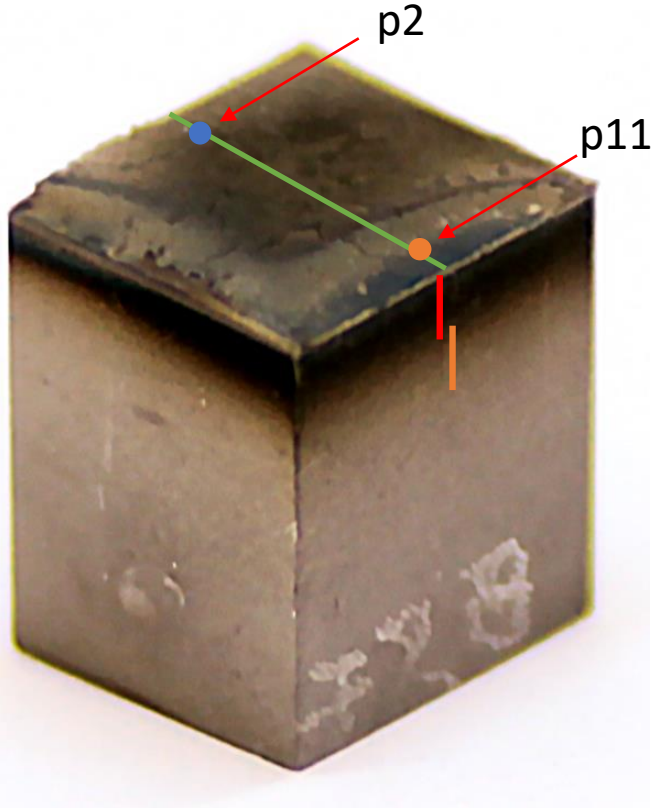
# IWGL tile with runaway electron damage - 788



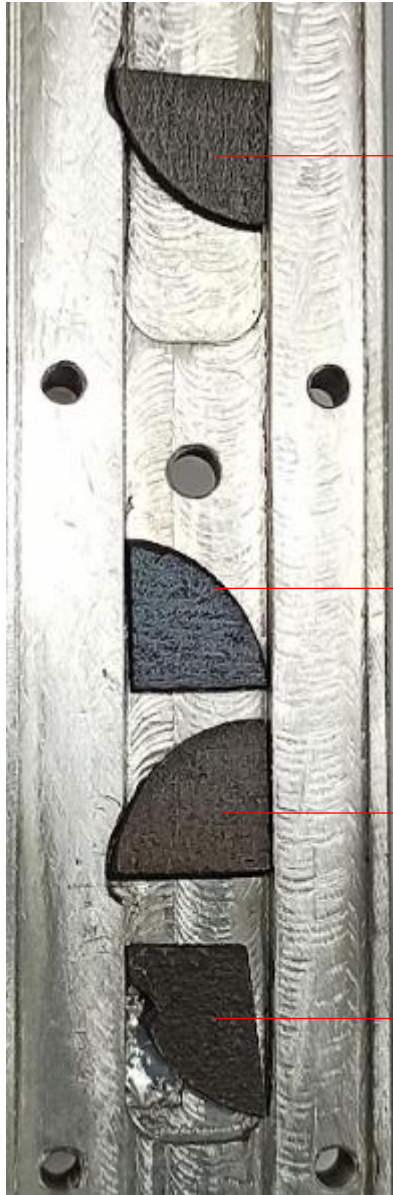
- scan 1 (microbeam)
- scan 2 (microbeam)
- scan 3 (JET chamber)



# IWGL tile with runaway electron damage - 788



# TDS Samples - post-baking TDS IBA

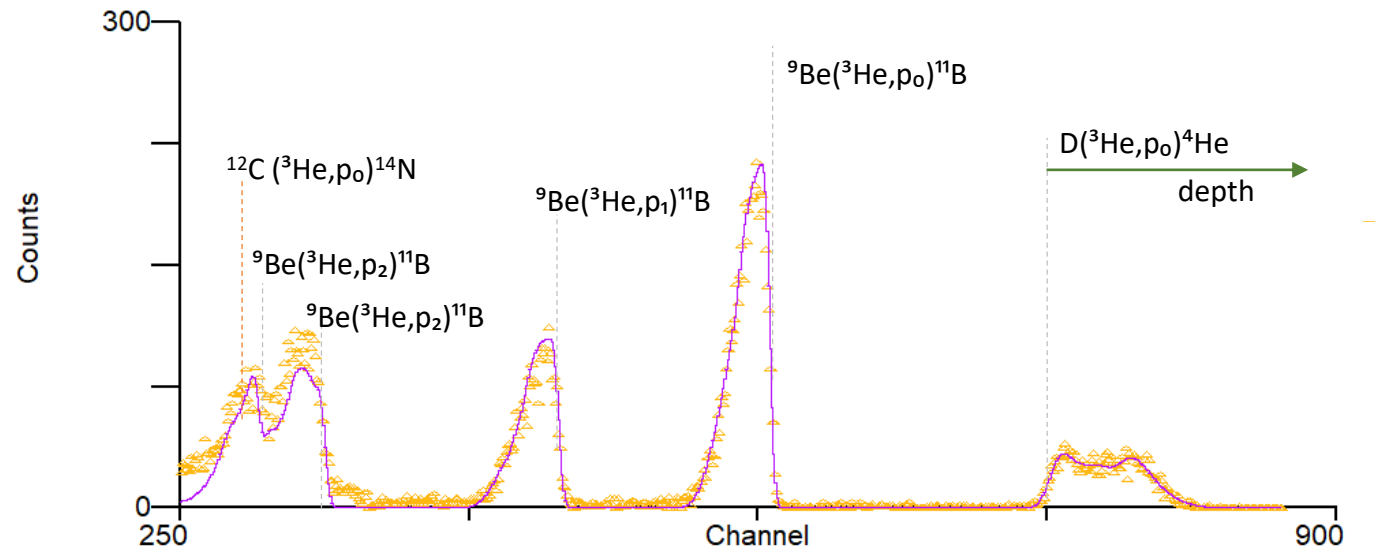
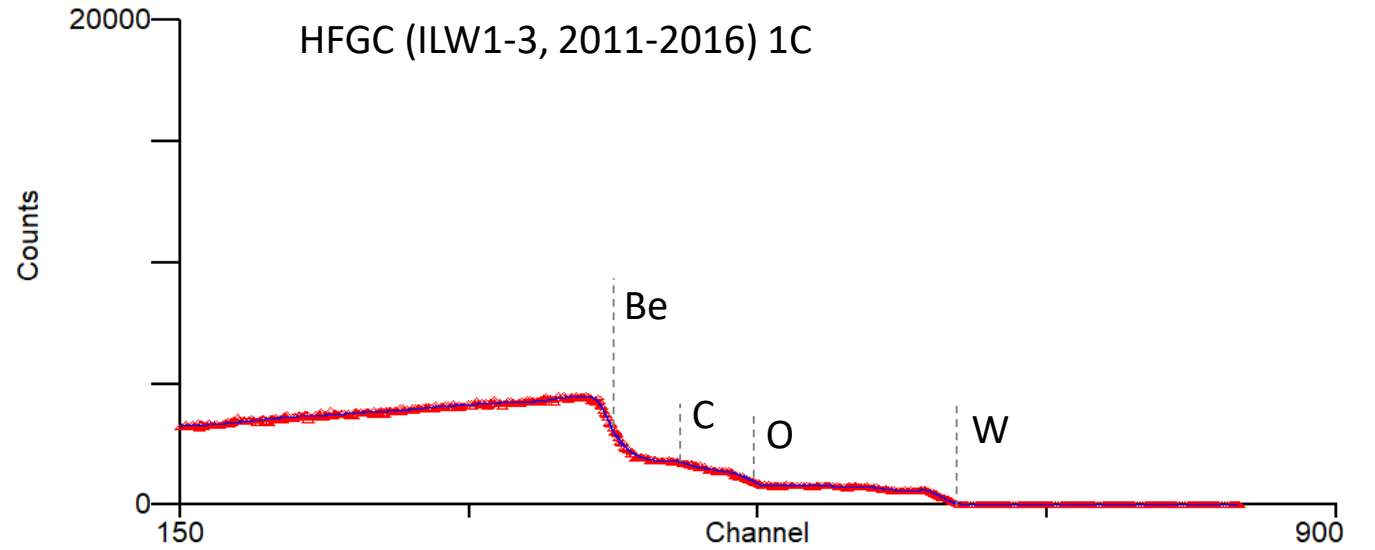


HFGC (ILW3, 2014-2016) 1C

HFGC (ILW1-3, 2011-2016) 3C

HFGC (ILW3, 2014-2016) 3C

HFGC (ILW1-3, 2011-2016) 1C



# 2023 plans

<p>TDS</p> <ol style="list-style-type: none"><li>1.Be689 – beryllium, baking cycle</li><li>2.Be710 – beryllium, baking cycle</li><li>3.Be728 – beryllium, baking cycle</li> <li>4.A24-100 – bulk W</li><li>5.C12-115 – bulk W</li><li>6.C24-133 – bulk W</li><li>7.D24-150 – bulk W</li> <li>8.Be396 – molten beryllium</li><li>9.Be398 – molten beryllium</li><li>10.Be401 – molten beryllium</li></ol>	<p>IWGL tile with runaway electron damage</p> <ul style="list-style-type: none"><li>• Constellation + quarter</li></ul> <p>( NDF Analysis missing)</p>	<p>Other samples, tiles</p> <ul style="list-style-type: none"><li>• Divertor samples from tiles 4,5,6,7</li><li>• mirror cassettes (tubes)</li></ul>
--	--	--