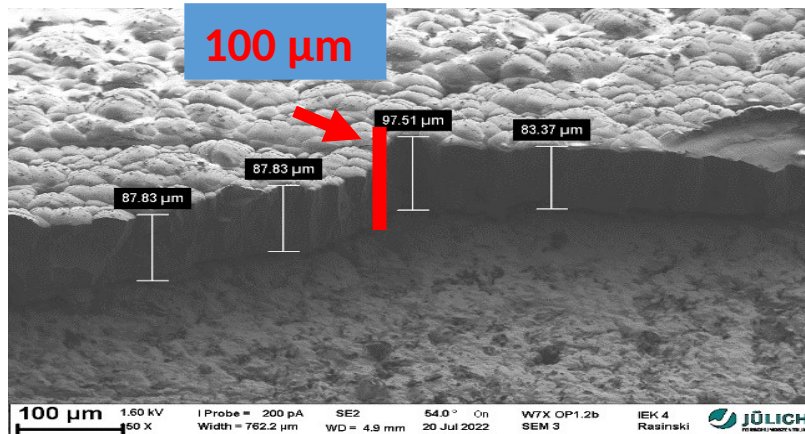


SPB.2 & SPB.3: Plans at FZJ

- Data analysis of the ^3He measurements on the TE areas close to the ^{13}C injections (pure analysis task)
- -SEM/"Metallography" on selected samples to correlate surface structure with NRA results
- SEM + LIDS/TDS and or NRA of FIB marked samples provided by Marcin
- Other samples from the current campaign
- IF available we would like to analyze a small set of additional TEs with NRA: mainly from the top part of HM38 to compare to ERO/WallDyn simulations + others to improve ^{13}C balance estimates



SEM image of a delaminated layer ~1 mm apart from one injection hole

