

Work-Package PrIO **P**reparation of **I**TER **O**peration

Towards Tokamak operations Conversational AI Interface Using Multimodal Large Language Models



Feda ALMUHISEN (Principal Investigator)

Xavier LITAUDON (Project Leader),

Gloria FALCHETTO (Project Support),

João FIGUEIREDO (Coordinator Officer @ Programme Management Unit)

Eva Belonohy (PMU Training & Education , SP-3 task Leader)



This work has been carried out within the framework of the EUROfusion Consortium, funded by the European Union via the Euratom Research and Training Programme (Grant Agreement No 101052200 – EUROfusion). Views and opinions expressed are however those of the author(s) only and do not necessarily reflect those of the European Union or the European Commission. Neither the European Union nor the European Commission can be held responsible for them.





Contexte and Motivation



Operational Challenges

- Complexity:** Managing numerous parameters and subsystems (pressure, temperature, magnetic fields.etc)
- Data Overload:** Interpreting huge amounts of real-time data
- Anomalies detections:** Predicting and mitigating disruptions& equipment failures
- Response Time:** Making rapid and informed decisions during anomalies



Role of AI in Tokamak Operations

- Advanced data analysis
- Conversational interfaces
- Build models that understand and generate text, images, and other data formats



Our proposal

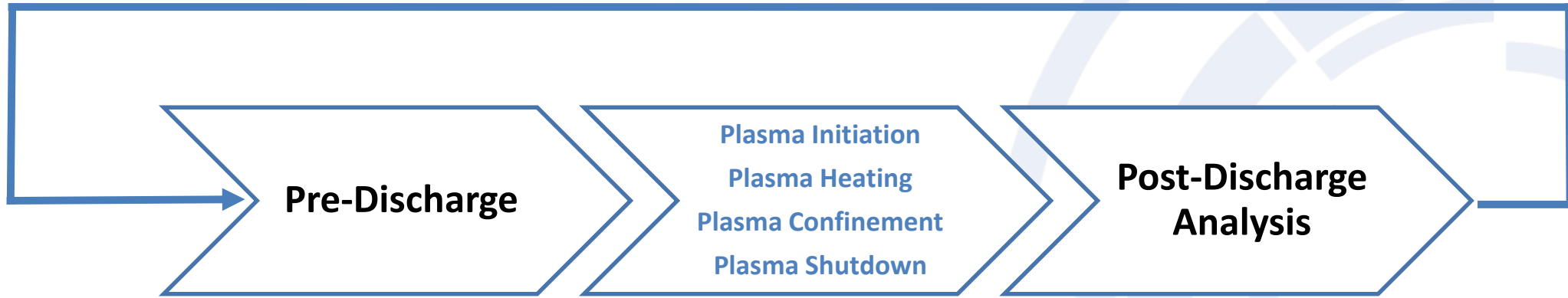
- Building AI conversational tool optimized for operations dialogue using **Large Language Models (LLMs)**
- Aims to support and help tokamak operators with:
 - Plasma discharge configuration
 - Data interaction
 - Provide advanced analysis to optimize control room operations





Which stage in the Tokamak operation would benefit most from conversational AI tools?

Discharge Process



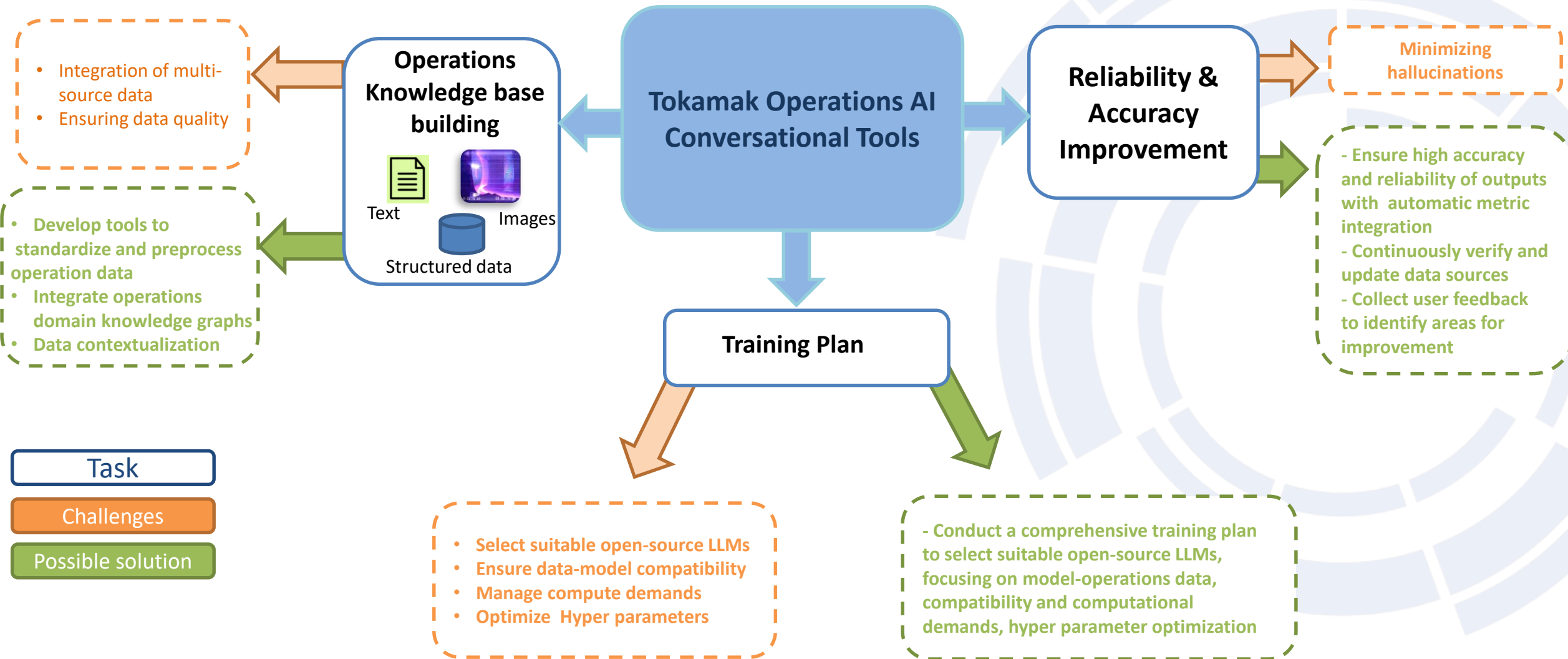
How the Conversational AI Tool can position

- ❖ Help in Discharge Configuration and Operation Planning
- ❖ Assisting in verification
- ❖ Knowledge Acquisition

- ❖ Advanced analysis
- ❖ Help in next discharge preparation
- ❖ Help in anomaly detection



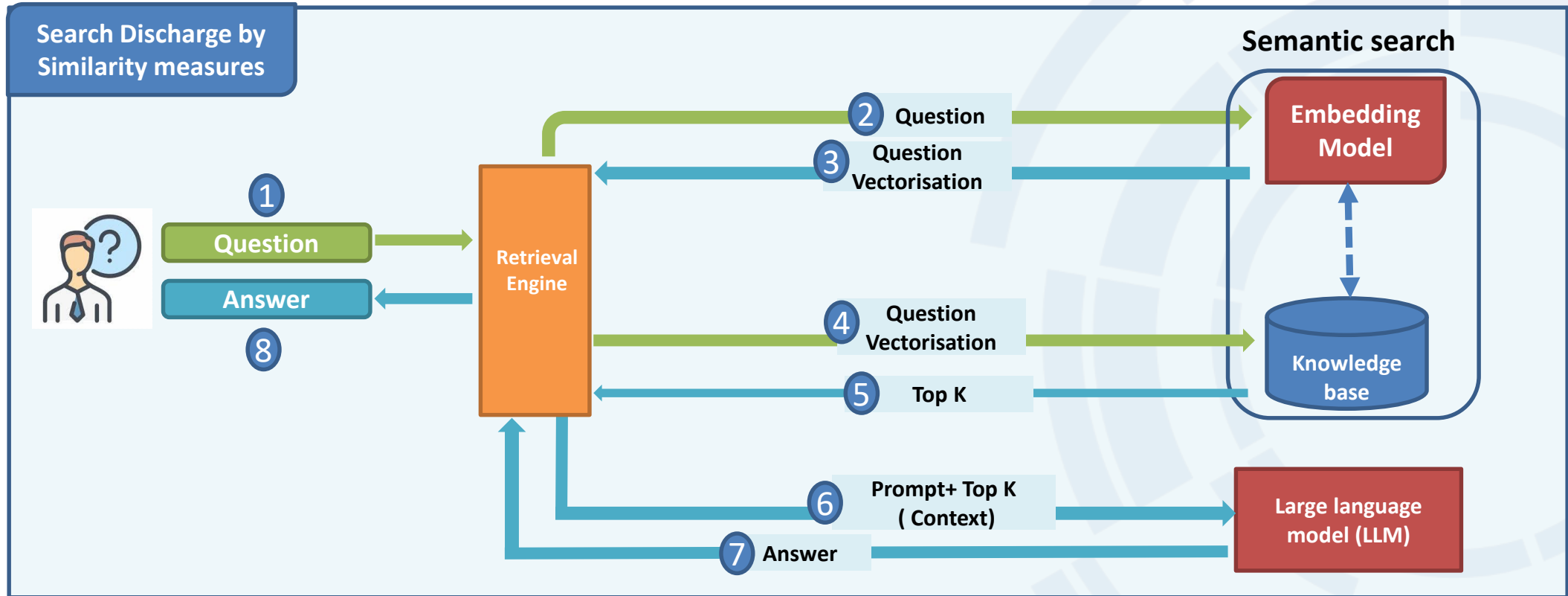
Challenges





Use Cases

Example : Discharge Similarity retrieval & reporting



Potential use cases

Discharge Classification

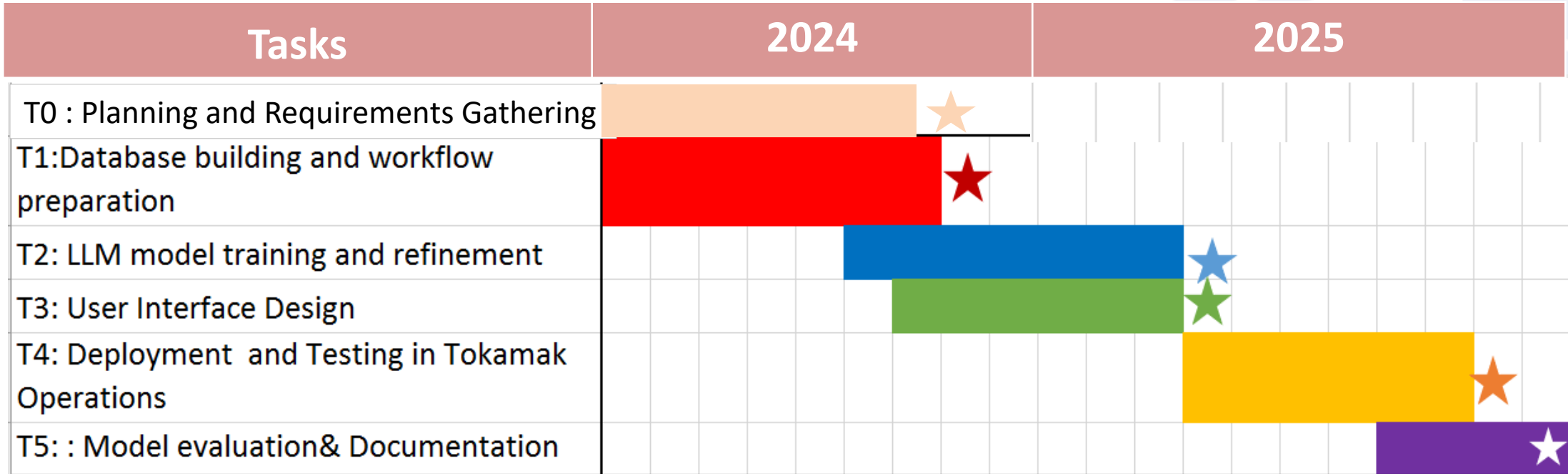
Discharge Reporting Summaries insights from previous discharge data

Question answering

Events Prediction



Planning and deliverables



More details in « Towards Tokamak operations Conversational AI Interface Using Multimodal Large Language Models scientific proposal ».pdf

Project Team

(Open position)

Feda Almuhsen
PI, Senior scientist

Ludovic Fleury
Senior scientist

Jorge Morales
Senior scientist

Patrick Maini
Senior Database Administrator

PostDoc
Post-doc fellow

Thanks & Acknowledge

Philippe Moreau, Rémy NOUAILLETAS, Cedric REUX , and all WEST Tokamak Session leaders for valuable discussions

