

DMP Implementation Status of IPP

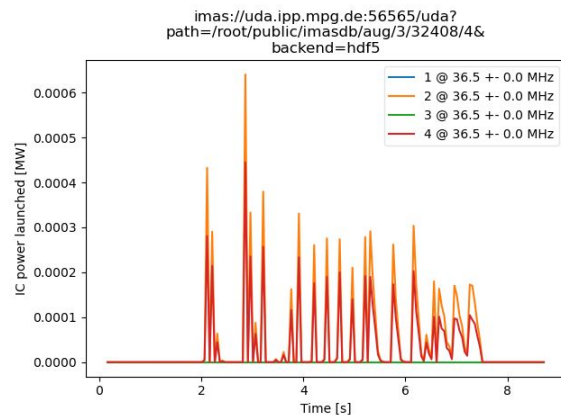
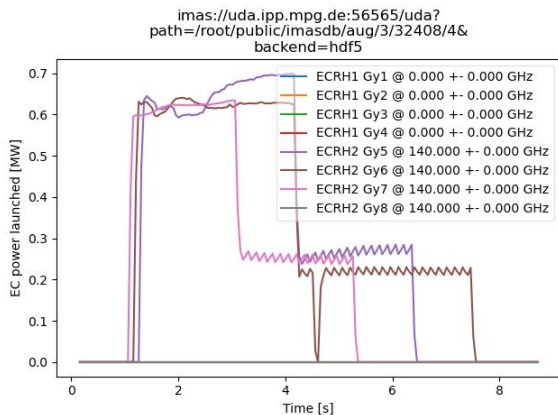
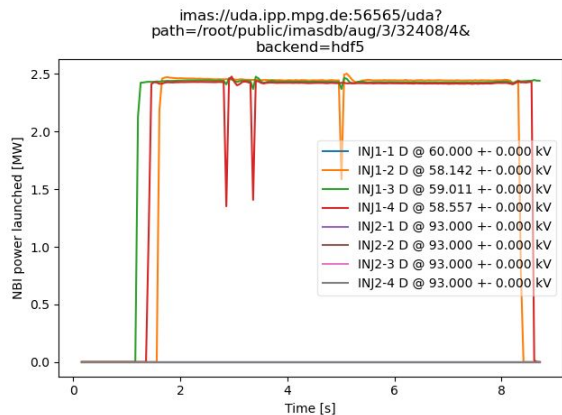
2025-01-08

Further testing of trview on shot 32408 (requested by TSVV11?)

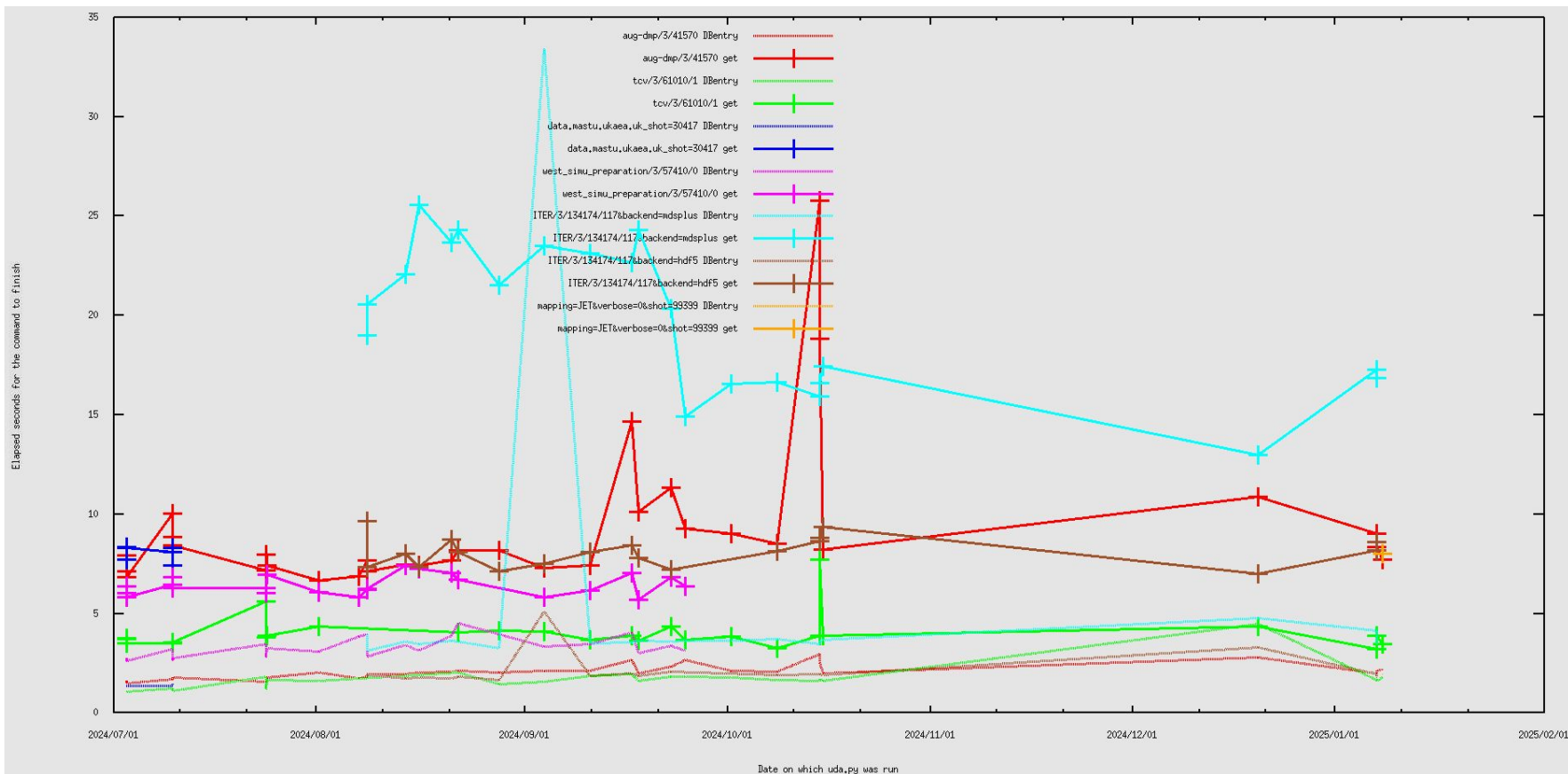
- Had run into some issues
 - Fixed by Giovanni
 - Saving the rabbit output as netcdf
 - Torbeam failing
 - Heterogeneous ec_launchers with times not at the right places in the structure
- Have 2 new versions of 32408
 - 'imas://uda.ipp.mpg.de:56565/uda?path=/root/public/imasdb/aug/3/32408/3&backend=hdf5'
 - Available IDses are: ['core_profiles', 'dataset_description', 'ec_launchers', 'ece', 'equilibrium', 'ic_antennas', 'nbi', 'pulse_schedule', 'summary', 'tf', 'wall']
 - 'imas://uda.ipp.mpg.de:56565/uda?path=/root/public/imasdb/aug/3/32408/4&backend=hdf5'
 - Available IDses are: ['core_profiles', 'core_sources', 'dataset_description', 'distributions', 'ec_launchers', 'ece', 'equilibrium', 'ic_antennas', 'nbi', 'pulse_schedule', 'summary', 'tf', 'wall', 'waves']

Further testing of trview on shot 32408 (requested by TSVV11?)

- imas://uda.ipp.mpg.de:56565/uda?path=/root/public/imasdb/aug/3/32408/4&backend=hdf5



Data access times



Accessing JET data

- Gateway (UDA/2.7.5-intel-compilers-2023.2.1, IMAS/3.42.0-2024.09-intel-2023b)
 - Accessing data from
`imas://uda.jetdata.eu:56565/uda?mapping=JET&verbose=0&shot=99399&batch_size=20`
 - Available IDses are: ['dataset_description', 'summary']
 - Timing information
 - DBentry = 2.833
 - get = 7.942
 - close = 0.032
- ITER (UDA/2.8.0-intel-compilers-2023.2.1, IMAS-AL-Python/5.4.0-intel-2023b-DD-4.0.0)
 - `./uda.py -u`
`"imas://uda.jetdata.eu:56565/uda?mapping=JET&verbose=0&shot=99399&batch_size=20"`
 - Accessing data from
`imas://uda.jetdata.eu:56565/uda?mapping=JET&verbose=0&shot=99399&batch_size=20`
 - Available IDses are: ['dataset_description', 'summary']
 - Timing information
 - DBentry = 1.887
 - get = 5.697
 - close = 0.023

Other issue (Reported on slack)

David Coster Yesterday at 10:34 AM

In a longer set of messages obtained when I was attempting to use idscp to copy data via UDA from Garching to ITER, I got:

```
ERROR:root:b'al_plugin_begin_global_action: unknown type CPX'
```

Is this a known problem? Is it related to (1) UDA, (2) idscp, (3) al-python or something else?

1 reply

Olivier Hoenen Yesterday at 1:19 PM

Looks like a UDA backend issue, to be confirmed by

@Jonathan Hollocombe

, I guess you are the first one testing UDA backend for IDS with complex data fields:

https://git.iter.org/projects/IMAS/repos/al-core/browse/src/uda/uda_xml.cpp#266