

# PWIE SP E kick-off meeting 2026

**Norberto Catarino**

Instituto de Plasmas e Fusão Nuclear (IST)

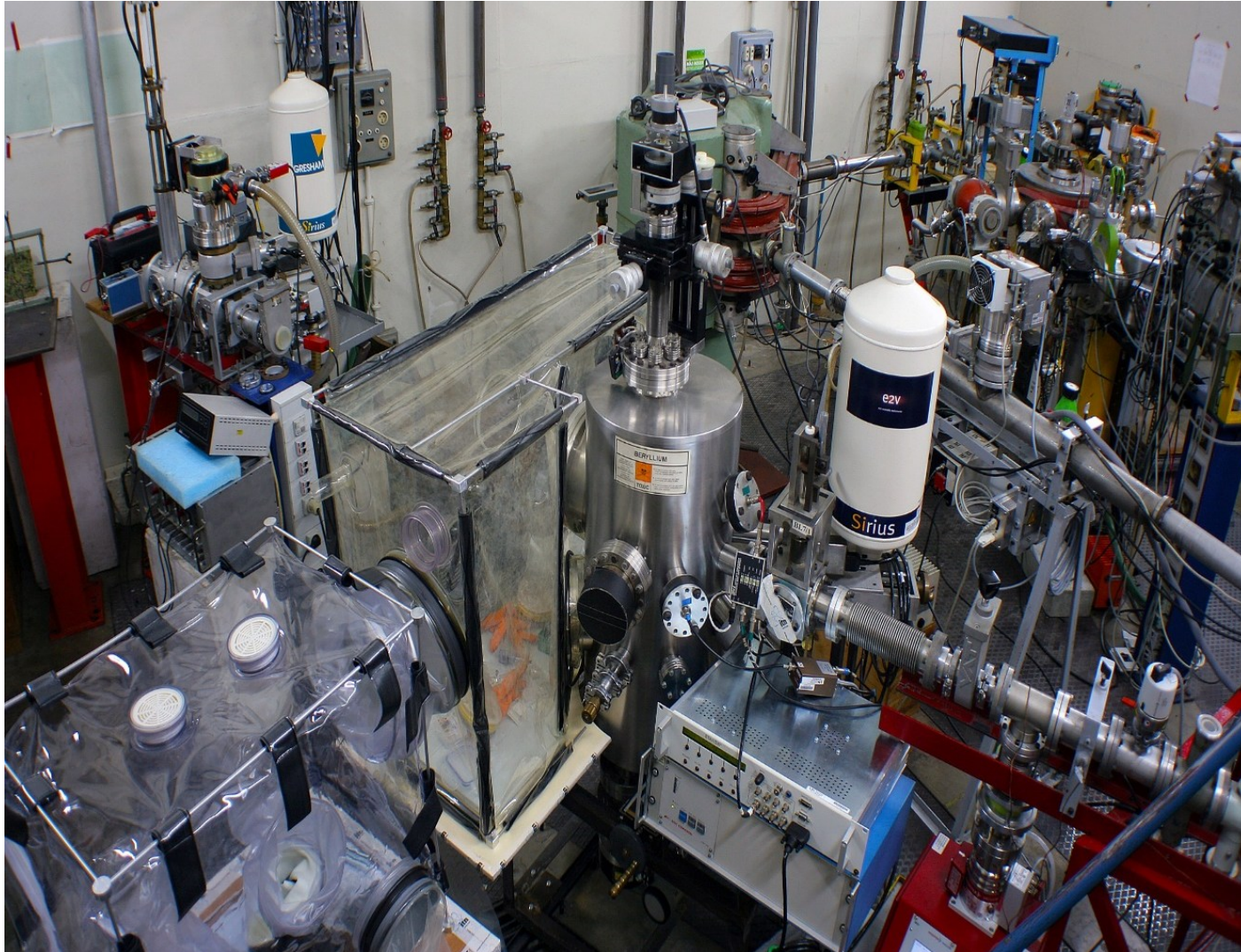


This work has been carried out within the framework of the EUROfusion Consortium, funded by the European Union via the Euratom Research and Training Programme (Grant Agreement No 101052200 – EUROfusion). Views and opinions expressed are however those of the author(s) only and do not necessarily reflect those of the European Union or the European Commission. Neither the European Union nor the European Commission can be held responsible for them.

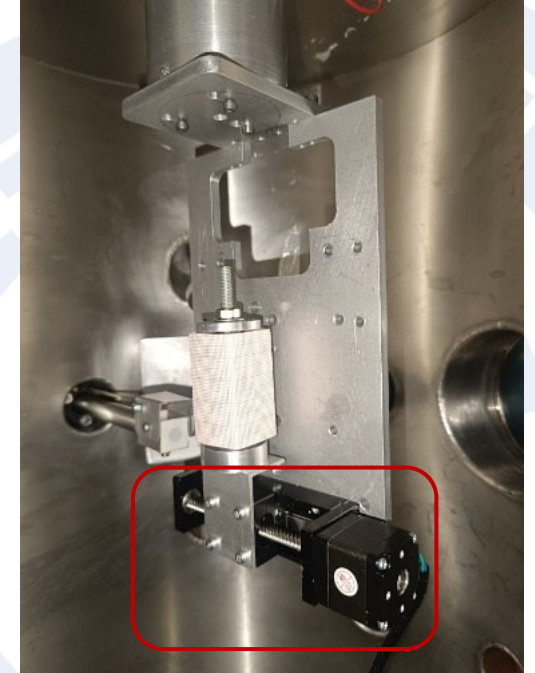
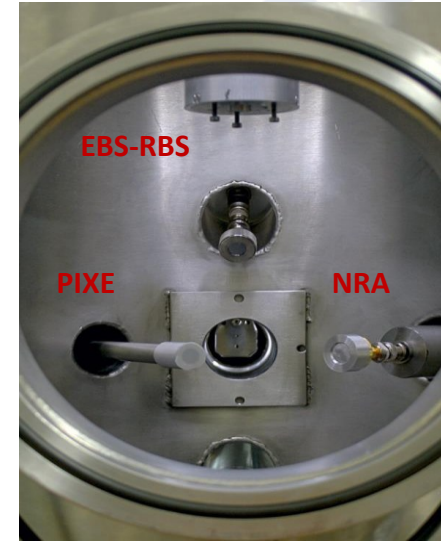




# Laboratory Layout



## Experimental chamber



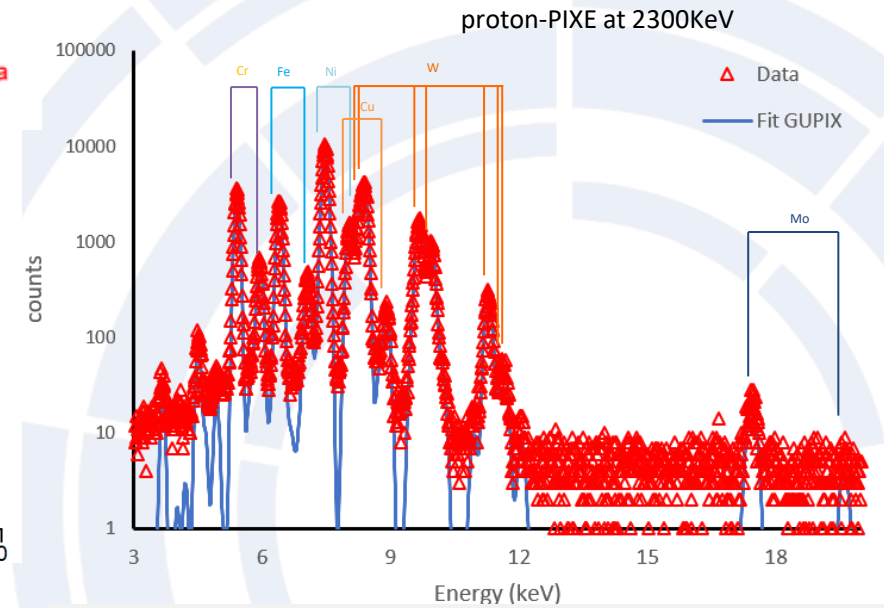
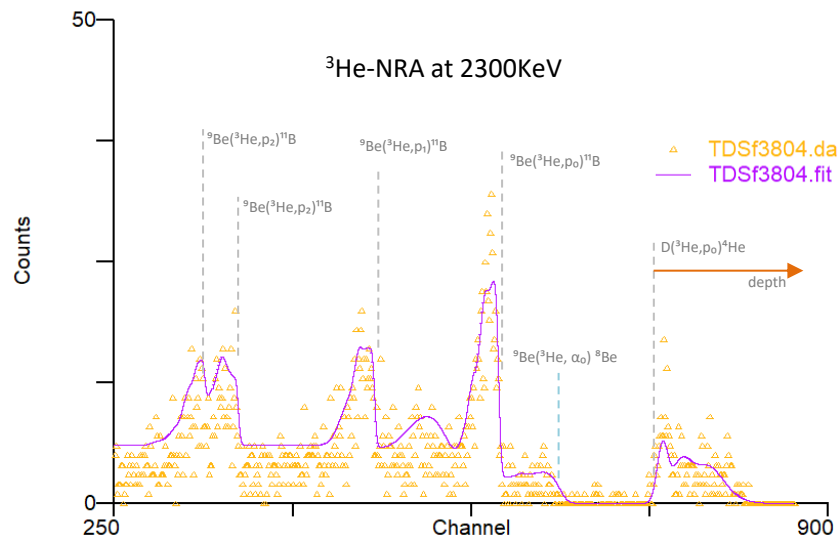
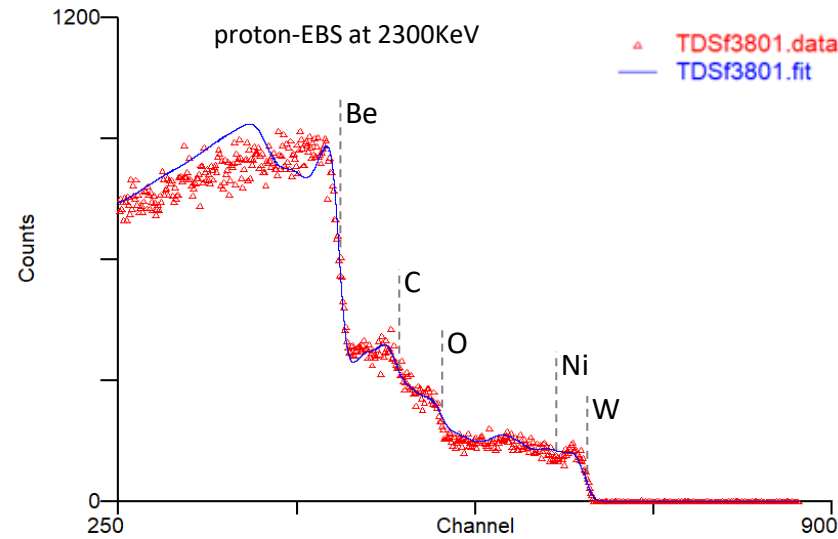
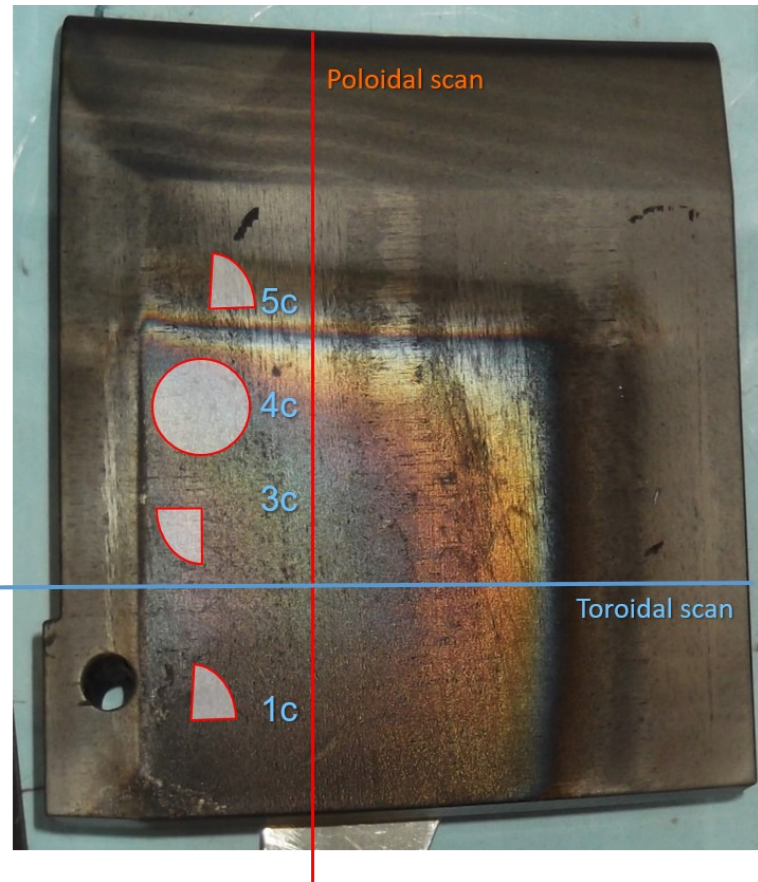
**Experimental JET chamber for the analysis:  
new horizontal stage (50 mm) installed and tested**



# Laboratory Layout

## 1C HFGC (ILW1-3, 2011-2016)

## HFGC (ILW1-3, 2011-2016)



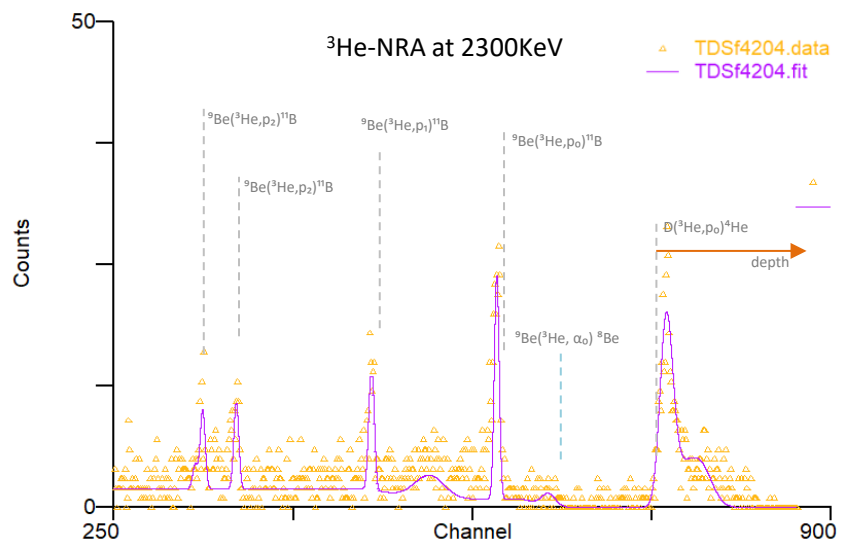
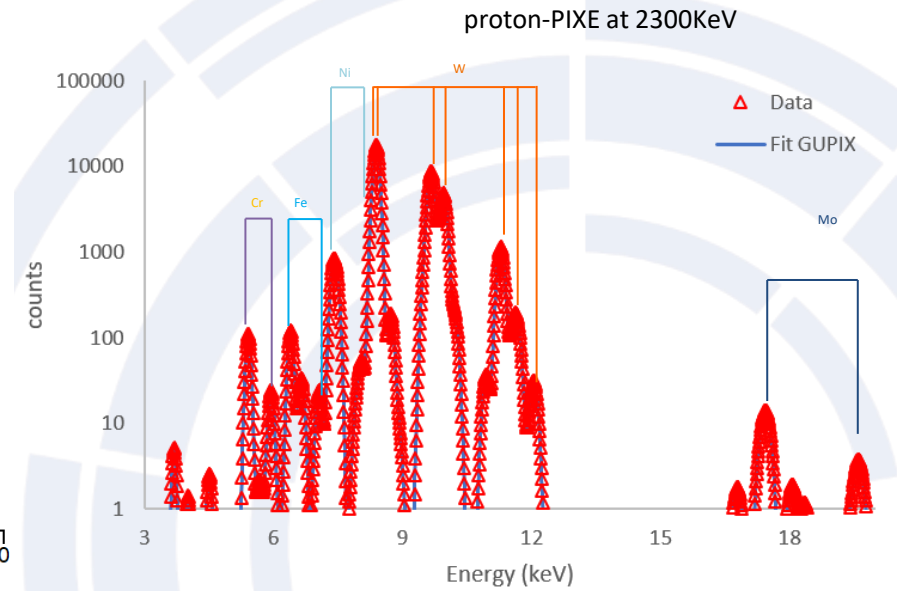
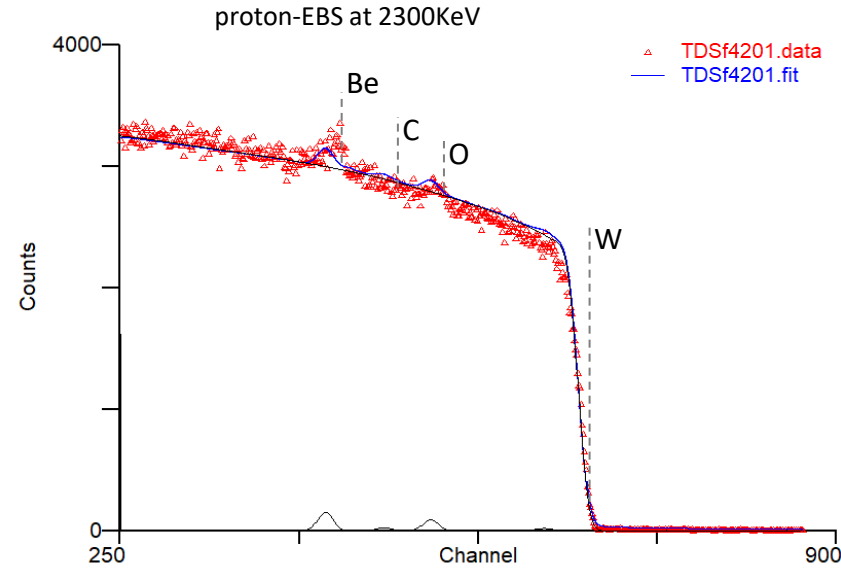
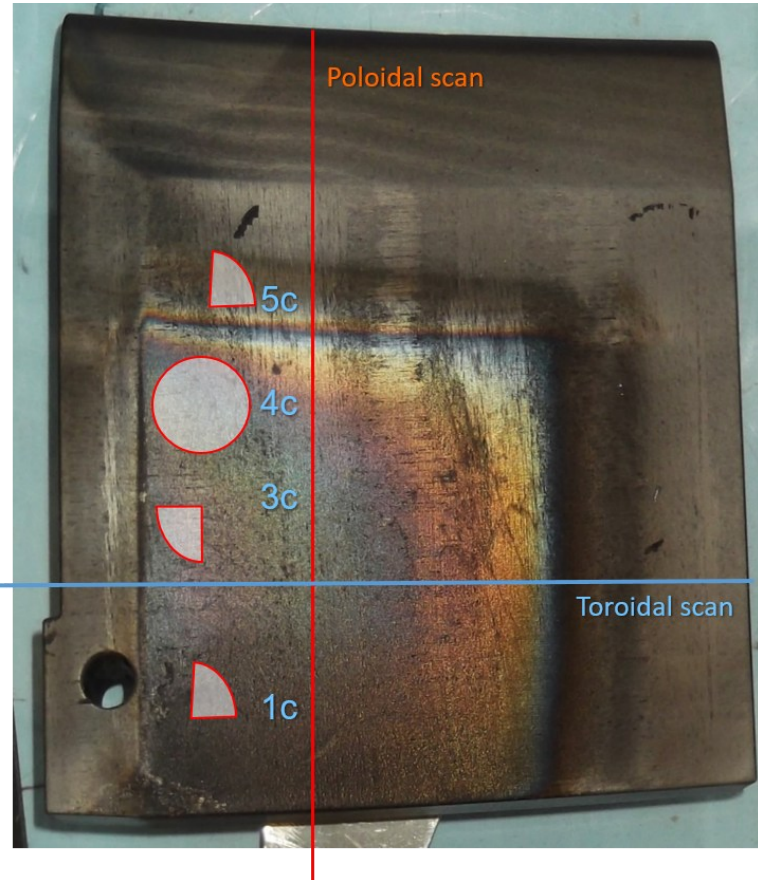
- EBS spectrum seems to have two components, one corresponding to Be and the other to a Ni+W film.
- It appears to be detecting the interface of a Be film on Ni+W.
- D is mostly at the surface (~40% of the total) extending to the detection limit (~5.0  $\mu\text{m}$ ) with a concentration of less than 1%, for a total of  $1.4 \times 10^{18}$   $\text{at}/\text{cm}^2$
- Similar spectra for samples 3C and core 4C



# Laboratory Layout

## HFGC (ILW1-3, 2011-2016)

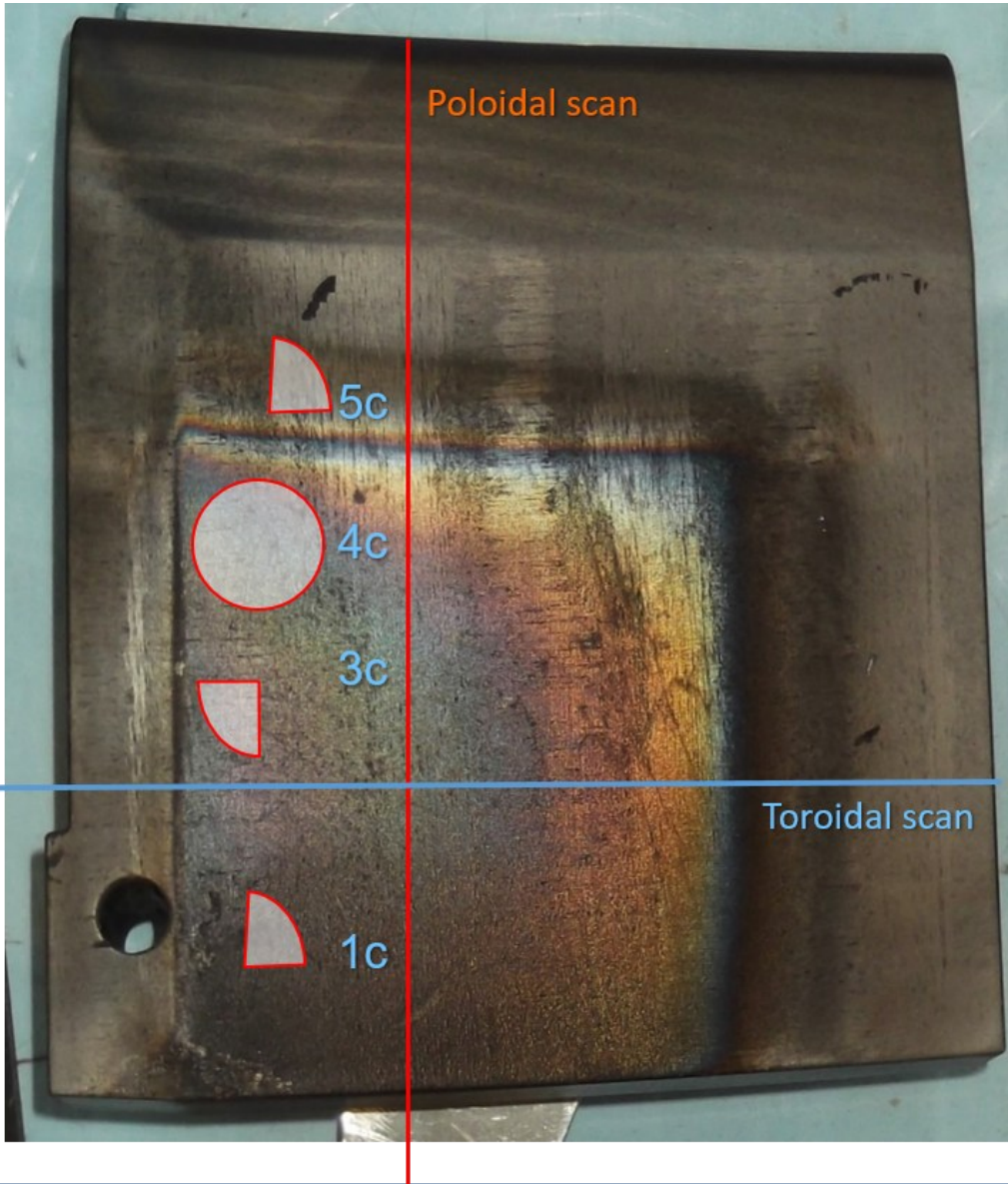
### 5C HFGC (ILW1-3, 2011-2016)



- W film with a thickness greater than 2.5 $\mu\text{m}$ ,
- a deposit of Be, C, O on the surface
- D is mostly at the surface (~80% of the total) extending up to ~4.0  $\mu\text{m}$  concentration of less than 2%, for a total of 2.70x10<sup>18</sup> at/cm<sup>2</sup>



# Laboratory Layout



## HFGC (ILW1-3, 2011-2016)

