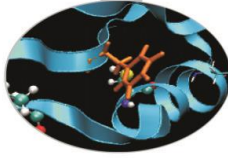
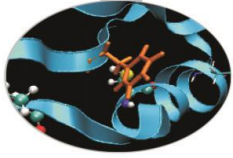


Outline



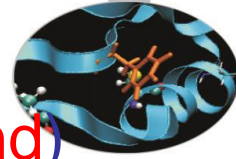
- MARCONI: Sanity checks launched during production on December (linpack, stream)
- MARCONI100: Sanity checks on GPU (dgemm, stream, nvlank, p2p) during maintenance for November

MARCONI – December 2020

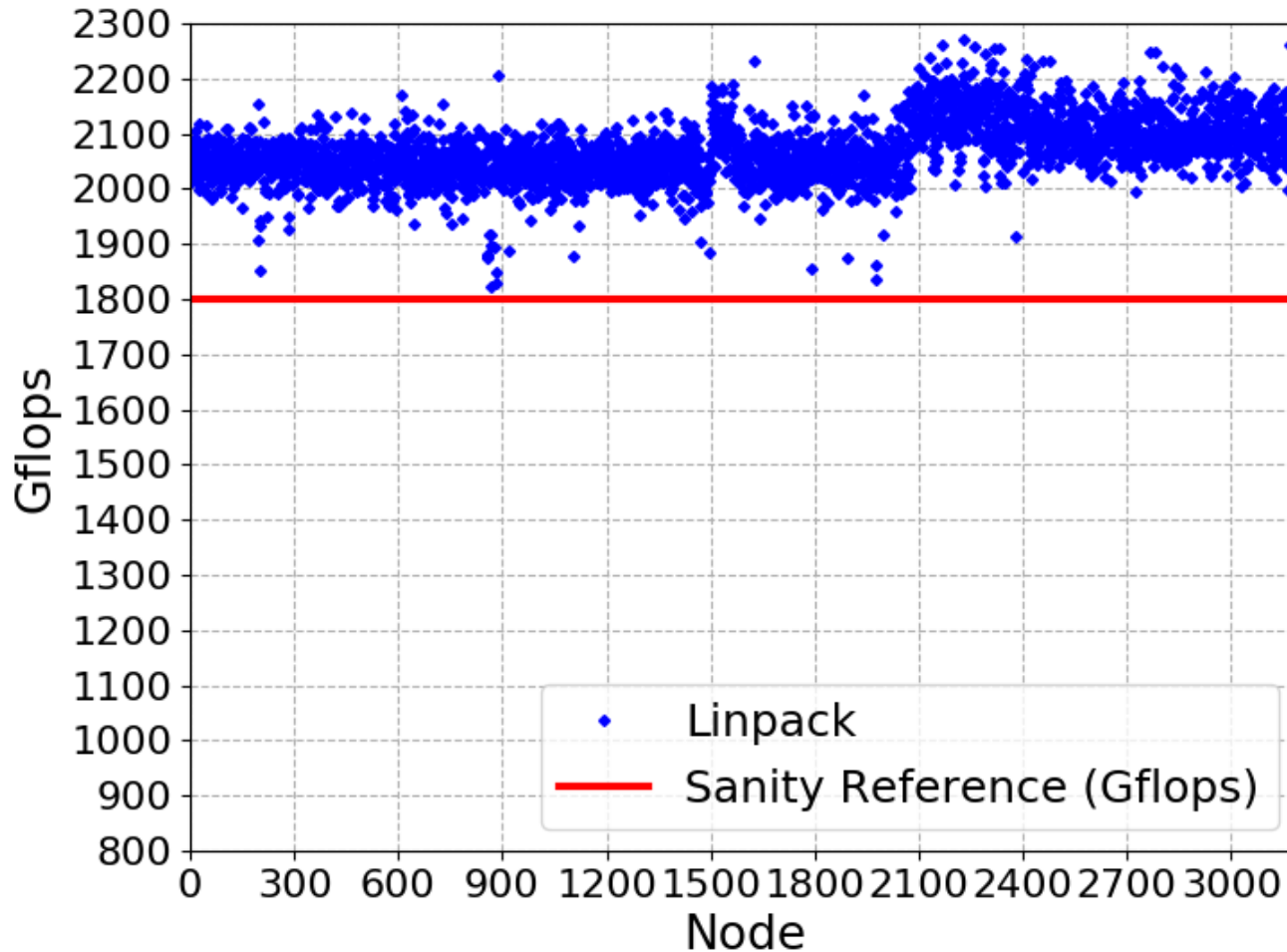


- Tests were performed during production on December 3rd
- Tests: linpack and stream on each single node of SKL
- No Switch-level Linpack tests (only during maintenance tests)
- Slow nodes have been removed from production for investigation and fixes

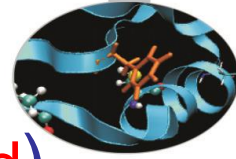
Linpack SKL



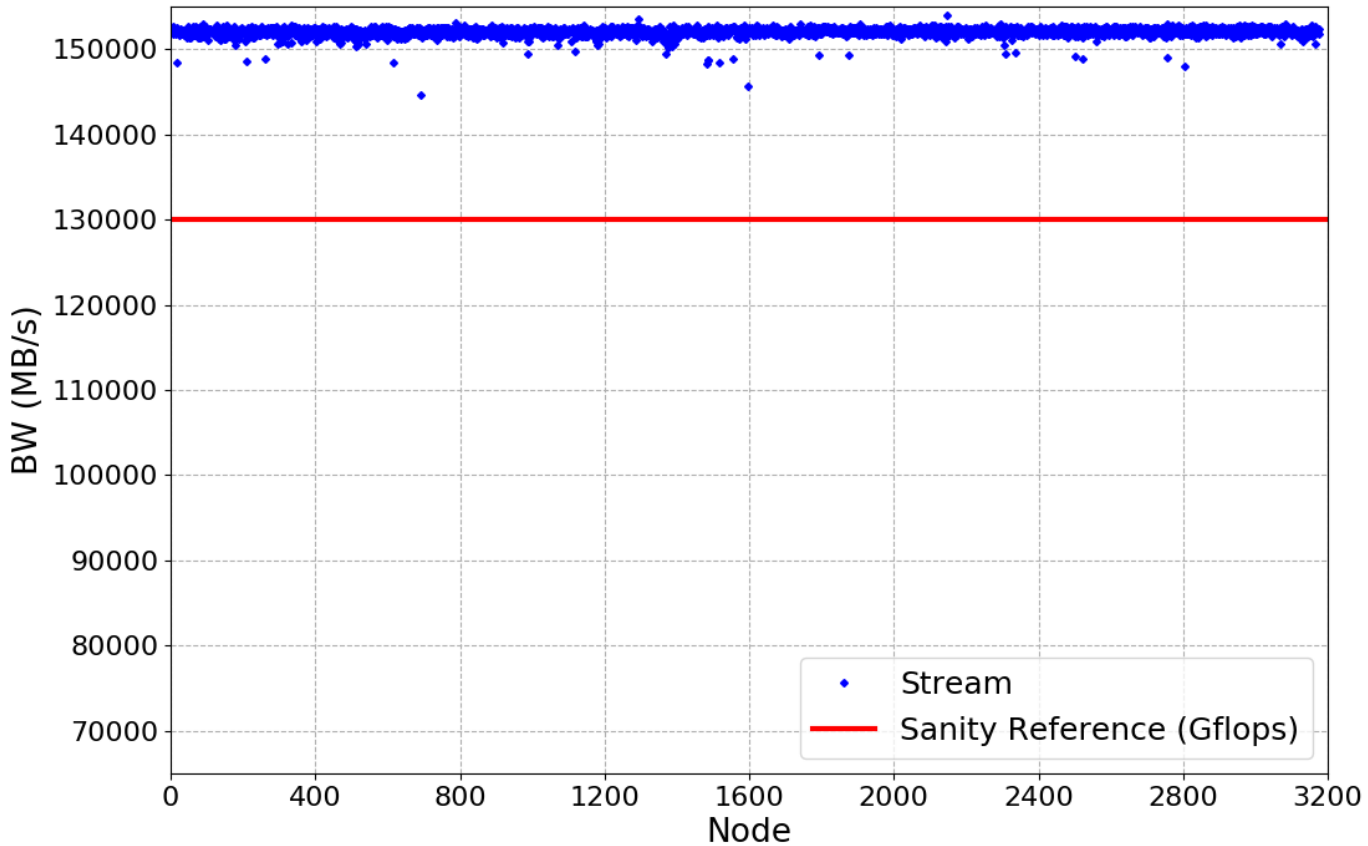
- Sanity threshold: 1800 Gflops (no slow nodes found)



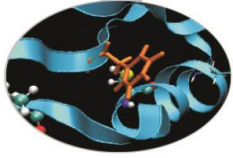
Stream SKL



- Sanity threshold: 130000 MB/s (no slow nodes found)

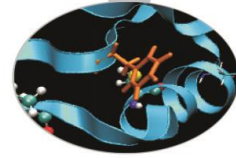


MARCONI100 – December 2020

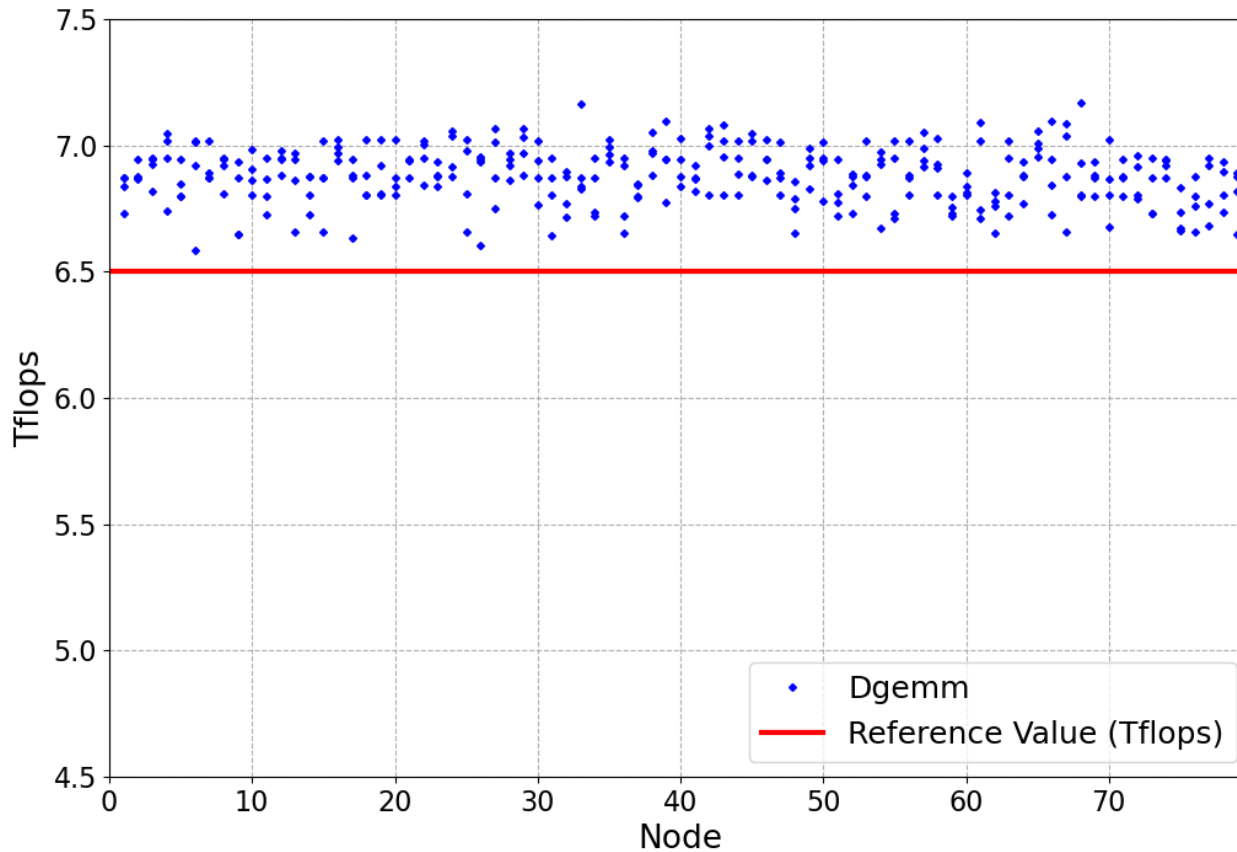


- Sanity checks were performed during maintenance on December 1st
- Tests: dgemm, stream-GPU, nvlink and p2p on each single node of M100
- Results from the nodes of EUROFusion partition are shown

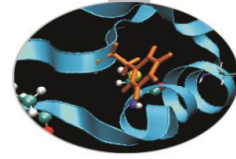
Dgemmm



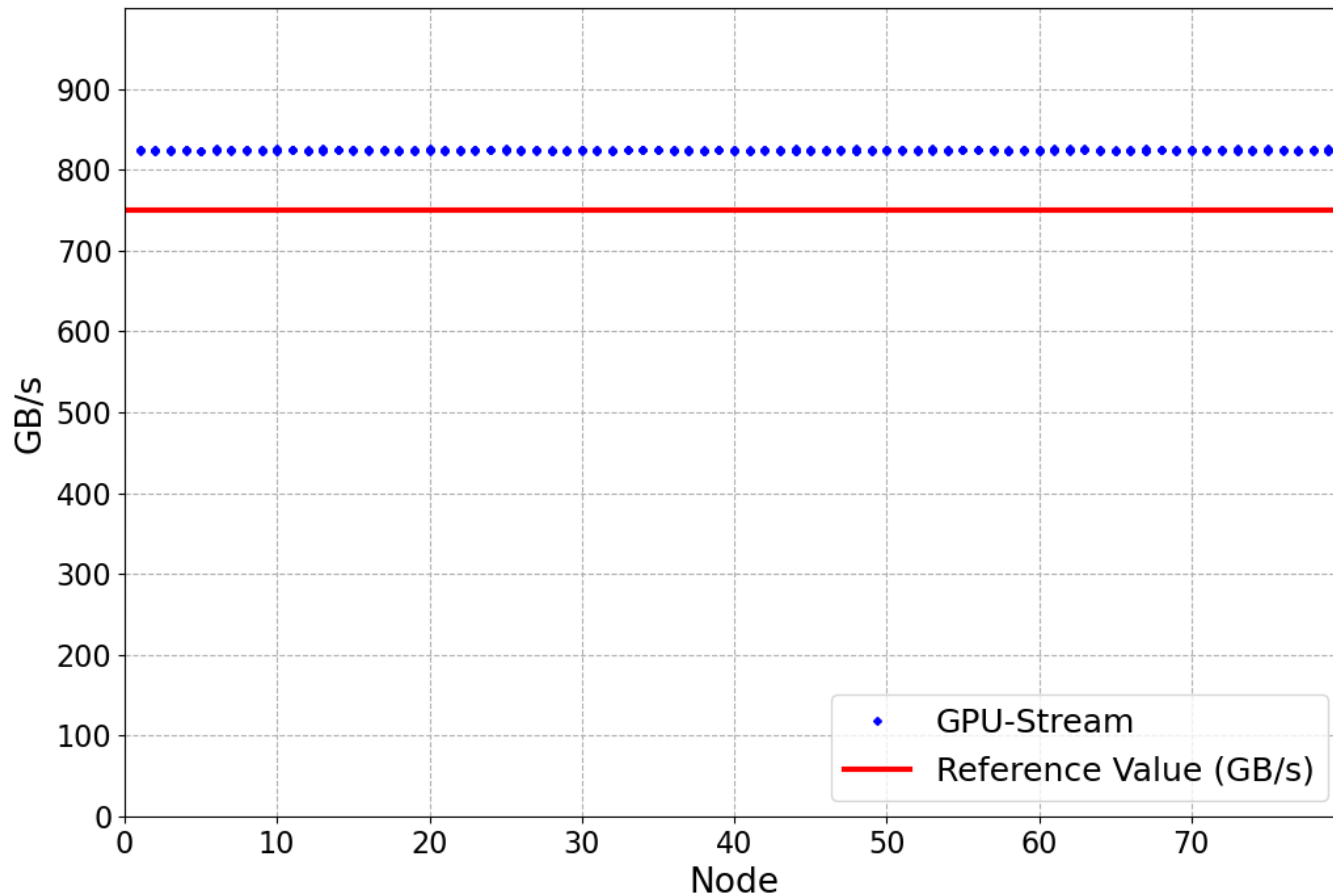
- Sanity threshold: 6.5 Tflops (no slow GPUs found)



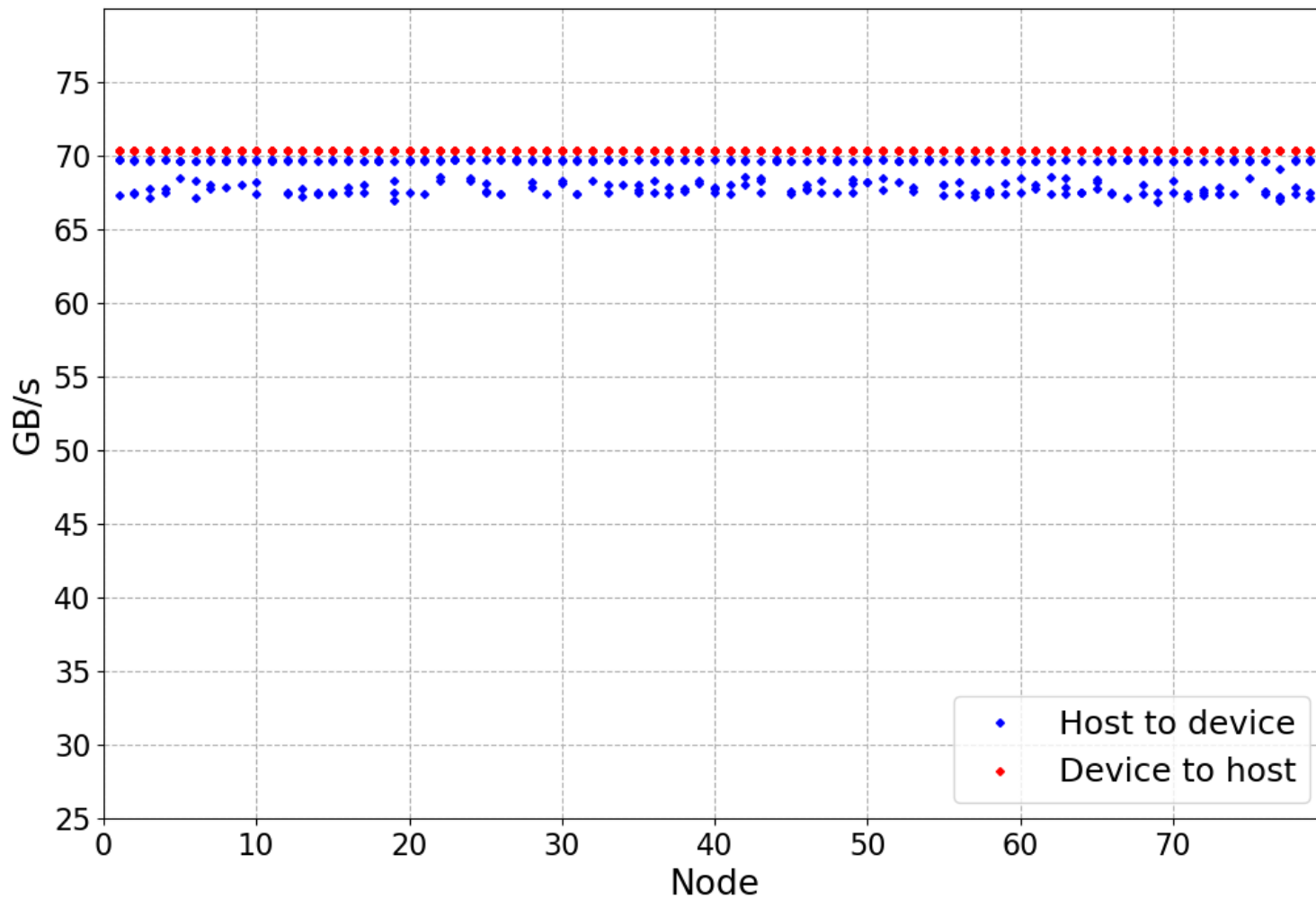
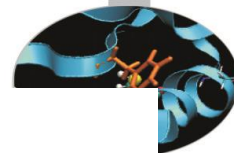
Stream-GPU



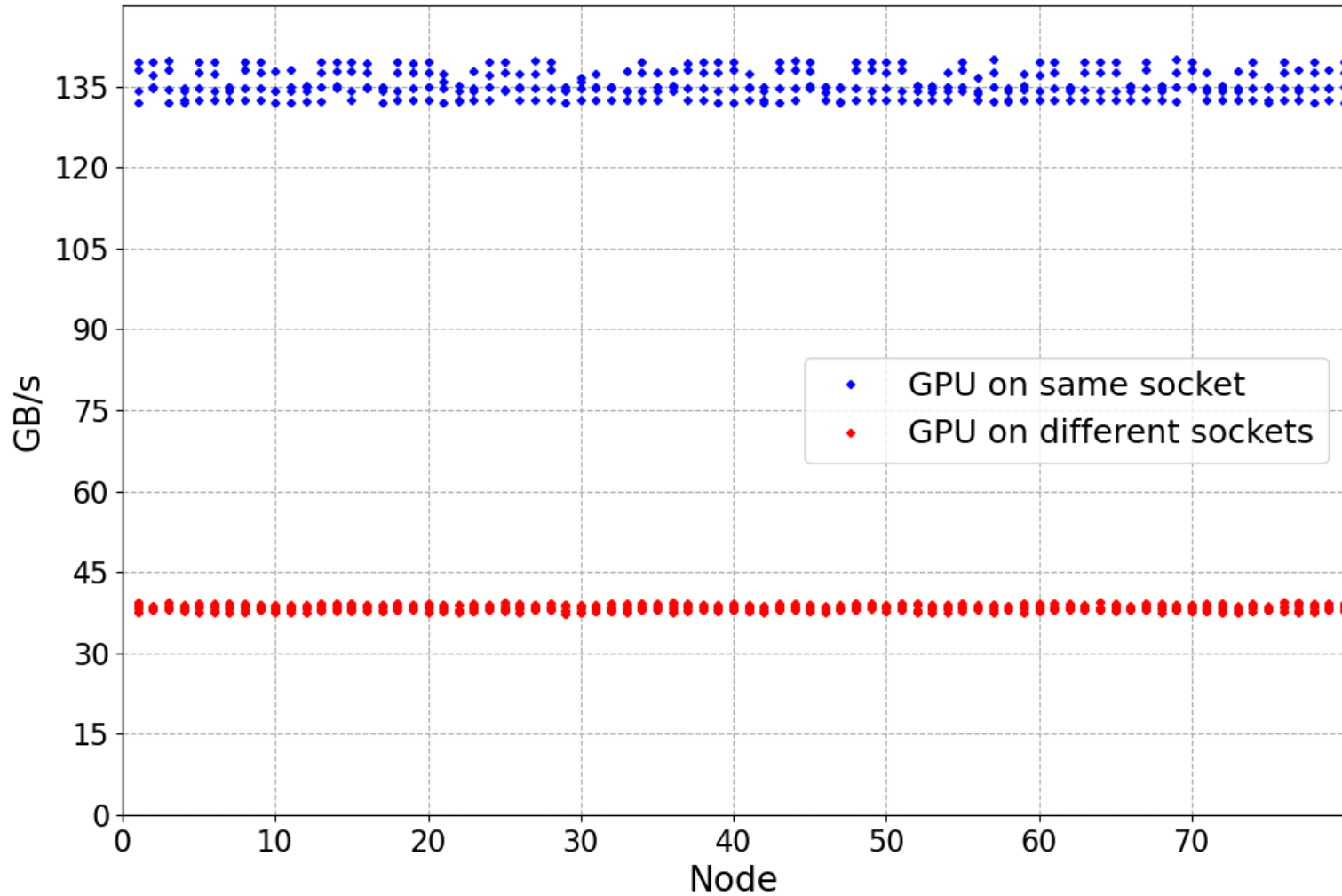
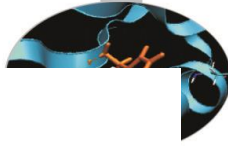
- Sanity threshold 750 Gb/s (no **slow GPUs found**)



Nvlink-GPU



P2P-GPU



FOR OPERATION COMMITTEE:

- Sanity checks on Marconi during maintenance (December 15th)