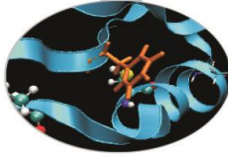


Outline

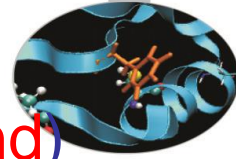
- MARCONI: Sanity checks launched during maintenance on January (linpack, stream, multi-node linpack)
- MARCONI100: Sanity checks on GPU (dgemm, stream, nvlLink, p2p) during production on January

MARCONI – January 2021

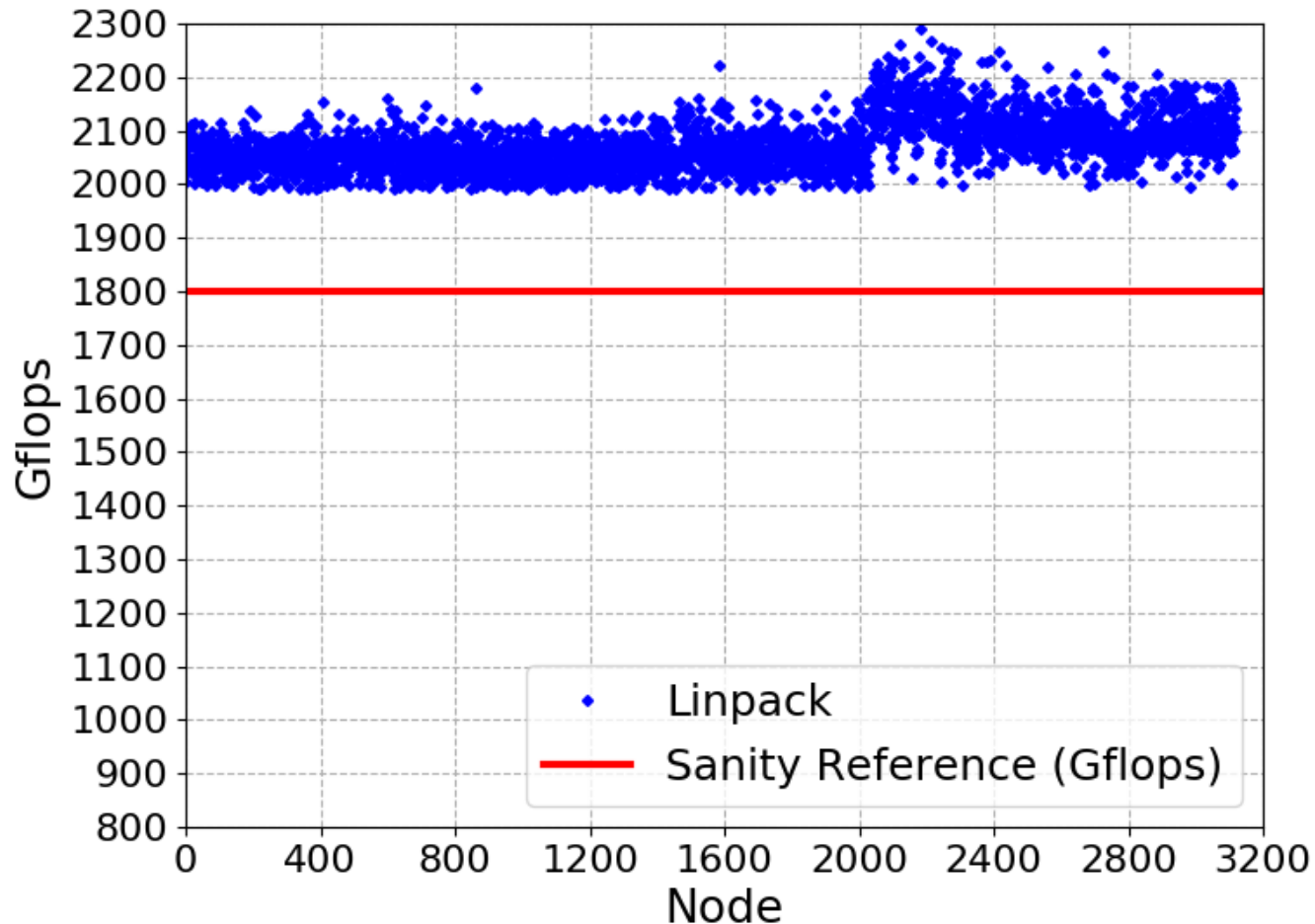


- Tests were performed during maintenance on January 12th
- Tests: lincpack and stream on each single node of SKL
- Switch-level Linpack tests were performed
- Slow nodes have been removed from production for investigation and fixes

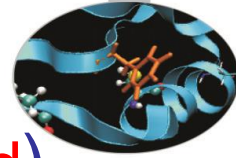
Linpack SKL



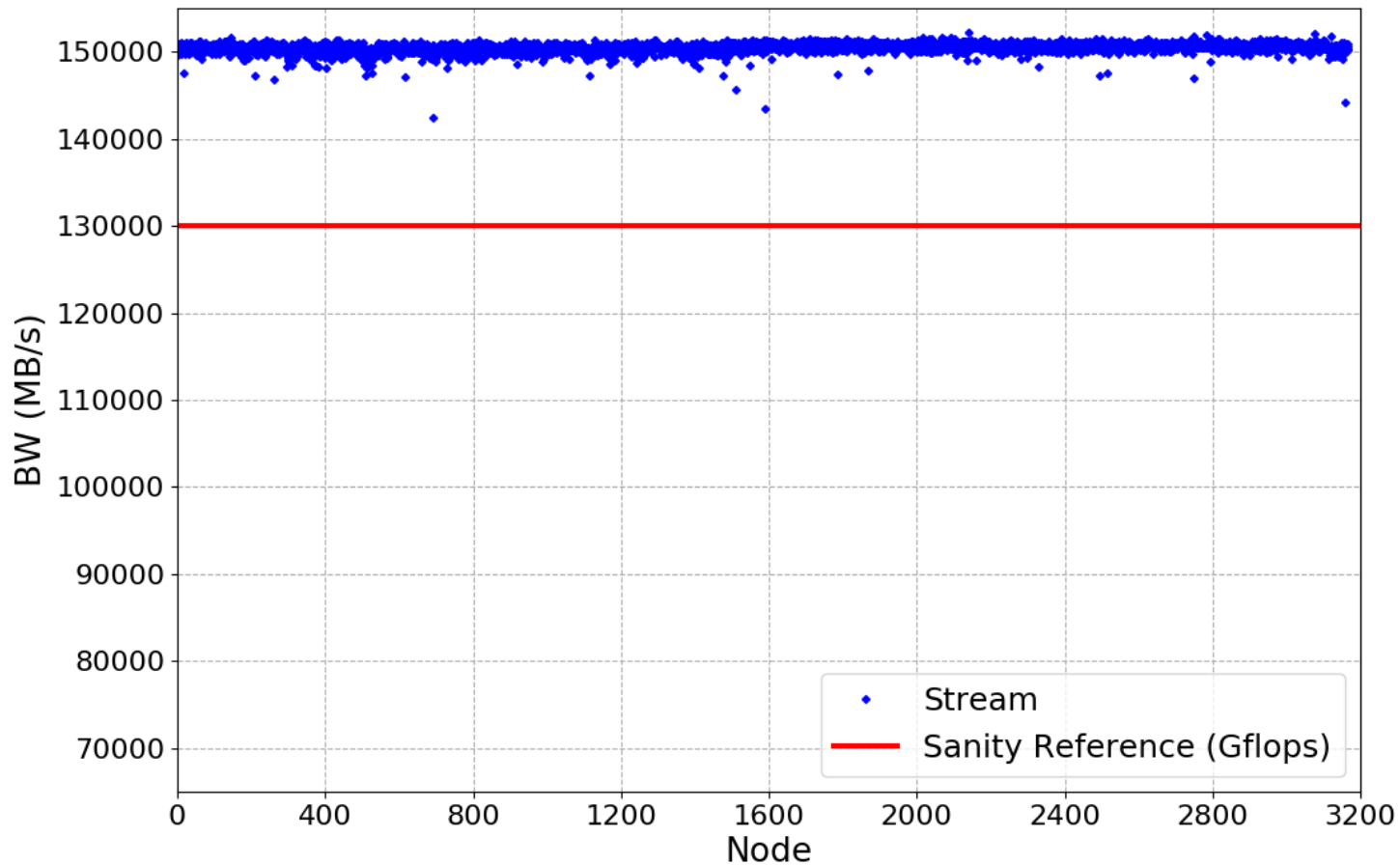
- Sanity threshold: 1800 Gflops (no slow nodes found)

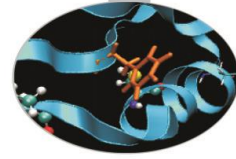


Stream SKL



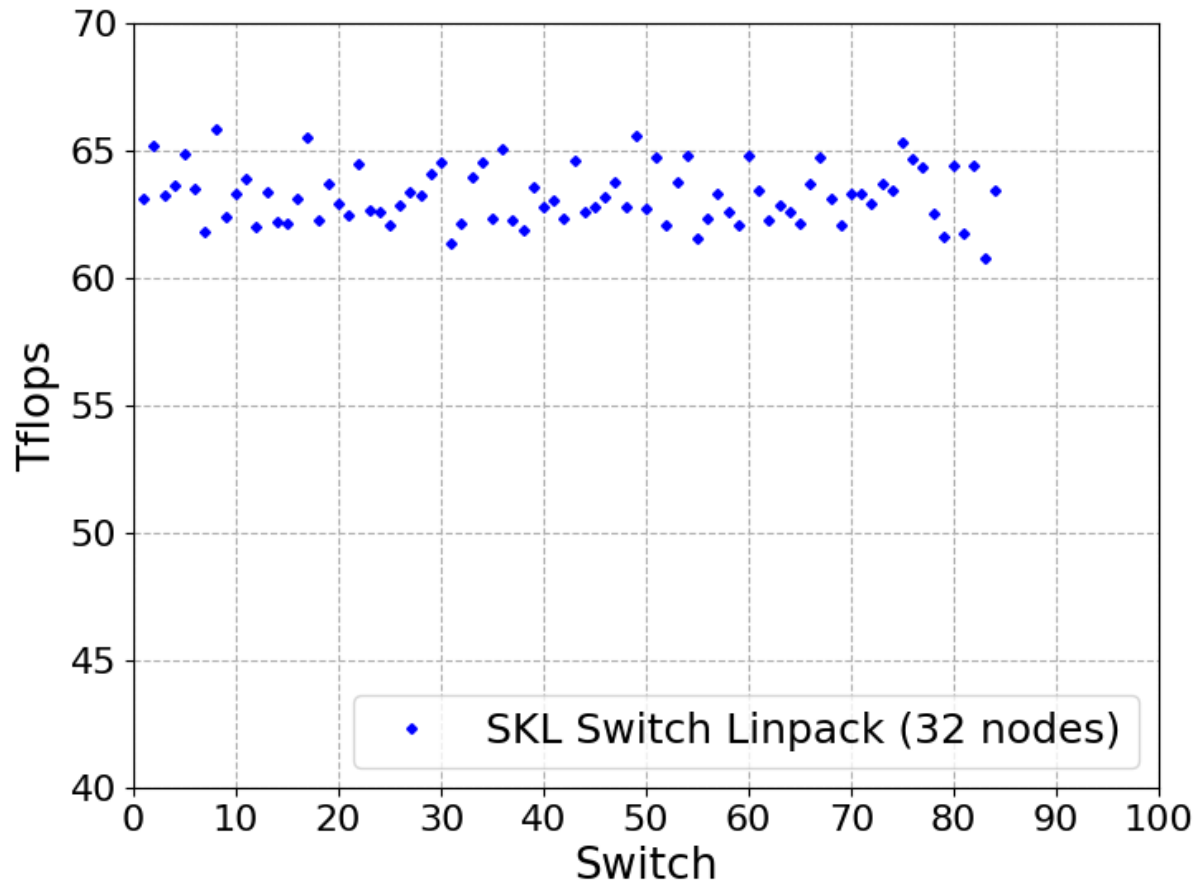
- Sanity threshold: 130000 MB/s (no slow nodes found)



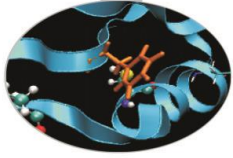


Switch-level Linpack SKL

- 84 switches tested
- No bad switches found (some needed a double run)

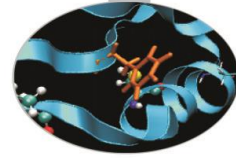


MARCONI100 – January 2021

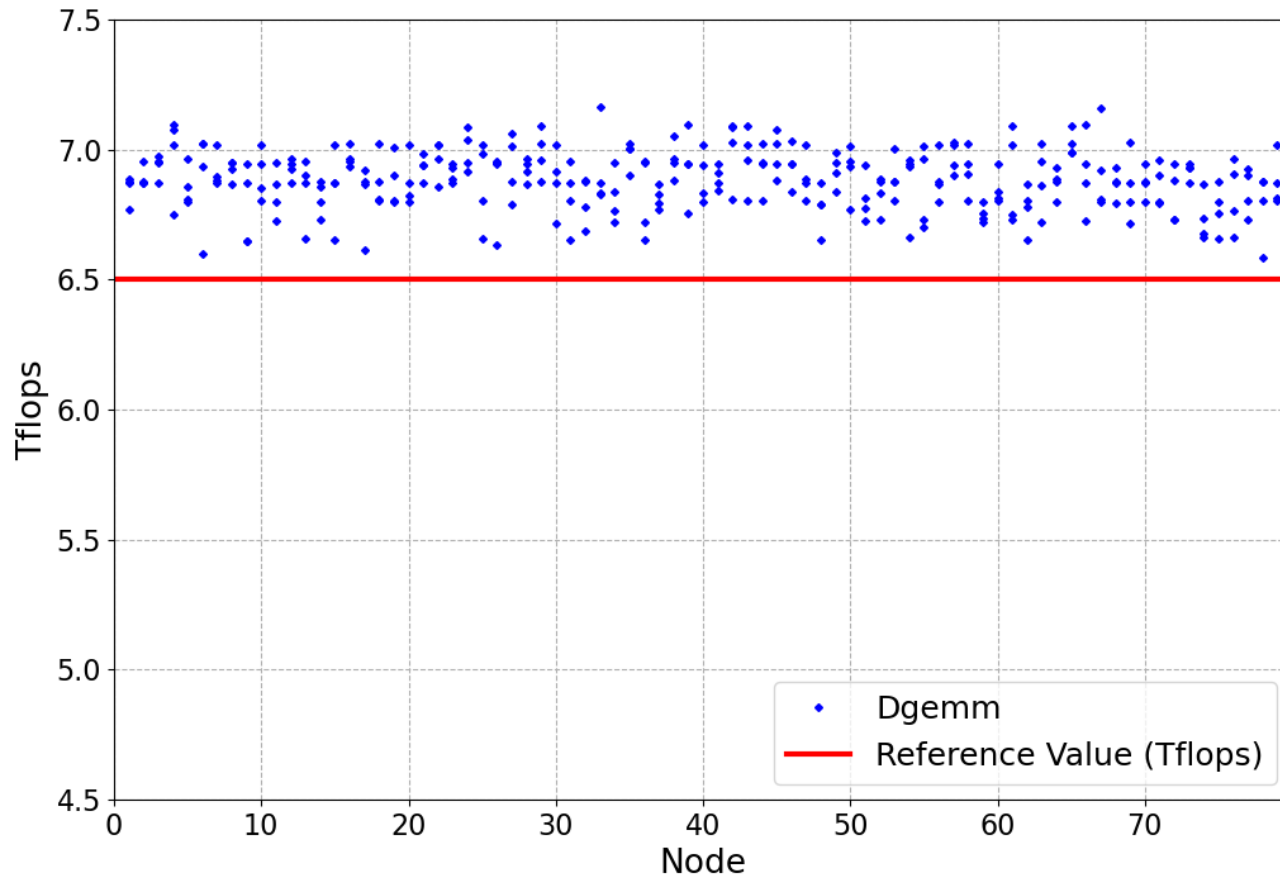


- Sanity checks were performed during production on January 8th
- Tests: dgemm, stream-GPU, nvlink and p2p on each single node of M100
- Results from the nodes of EURO Fusion partition are shown

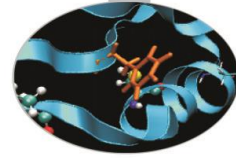
Dgemm



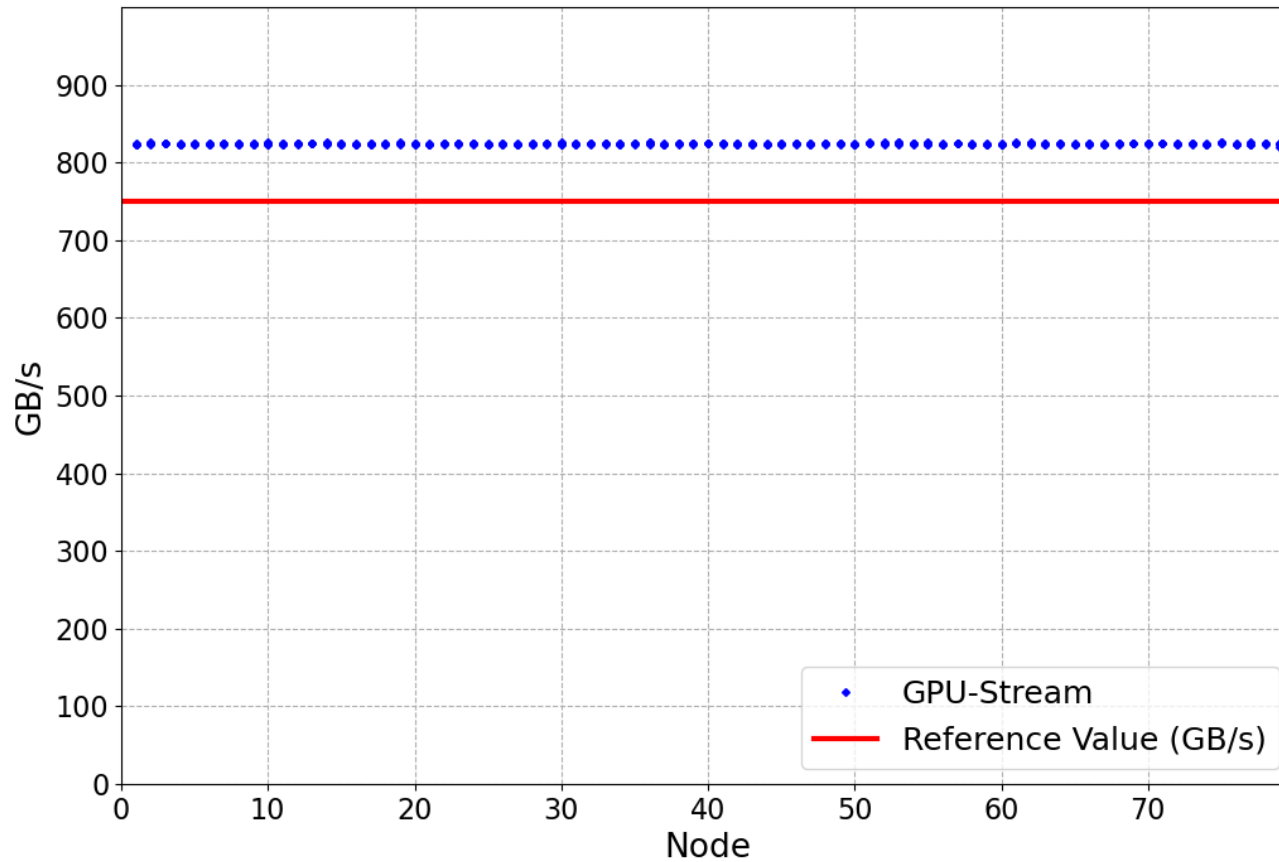
- Sanity threshold: 6.5 Tflops (no slow GPUs found)



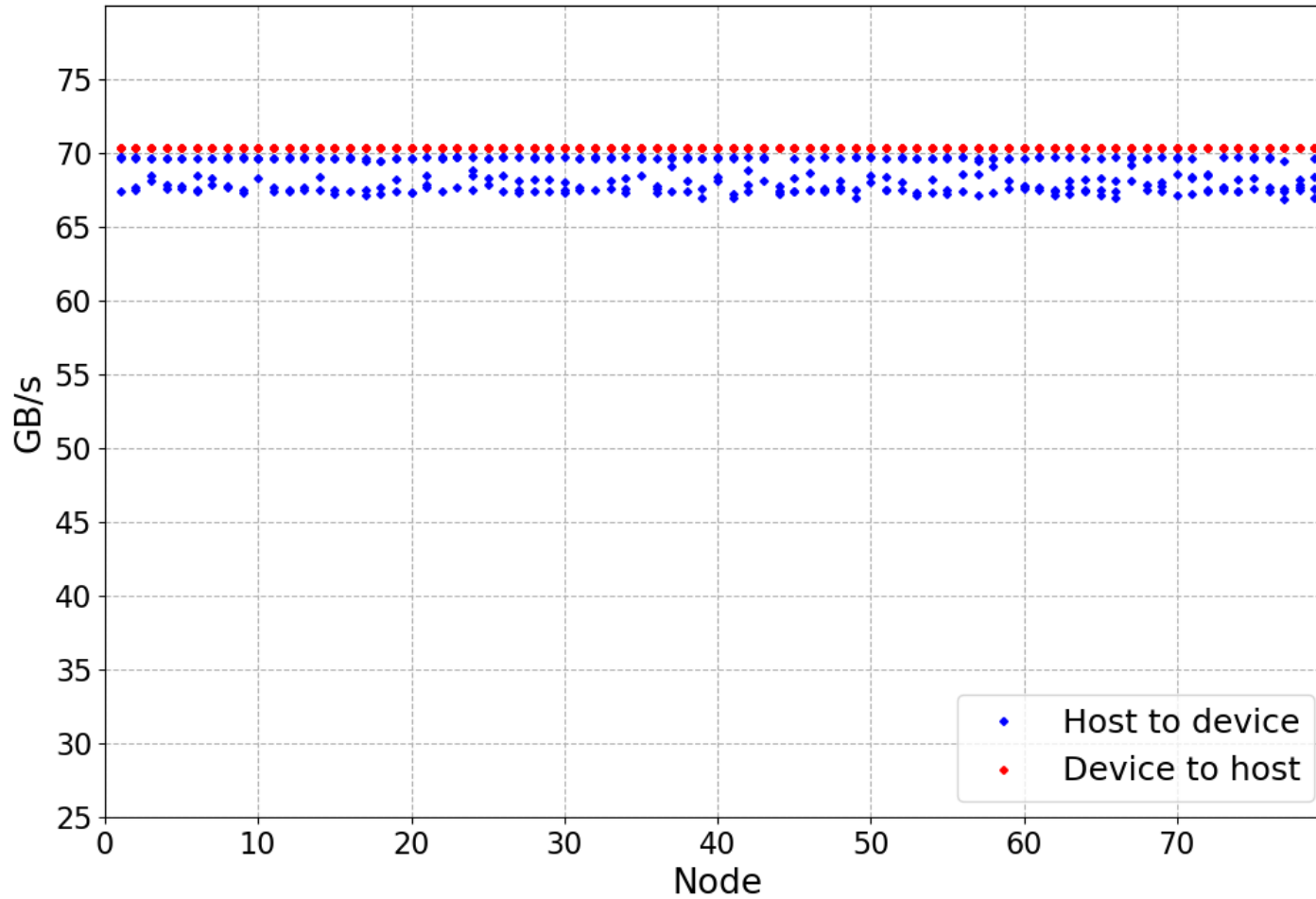
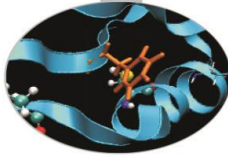
Stream-GPU



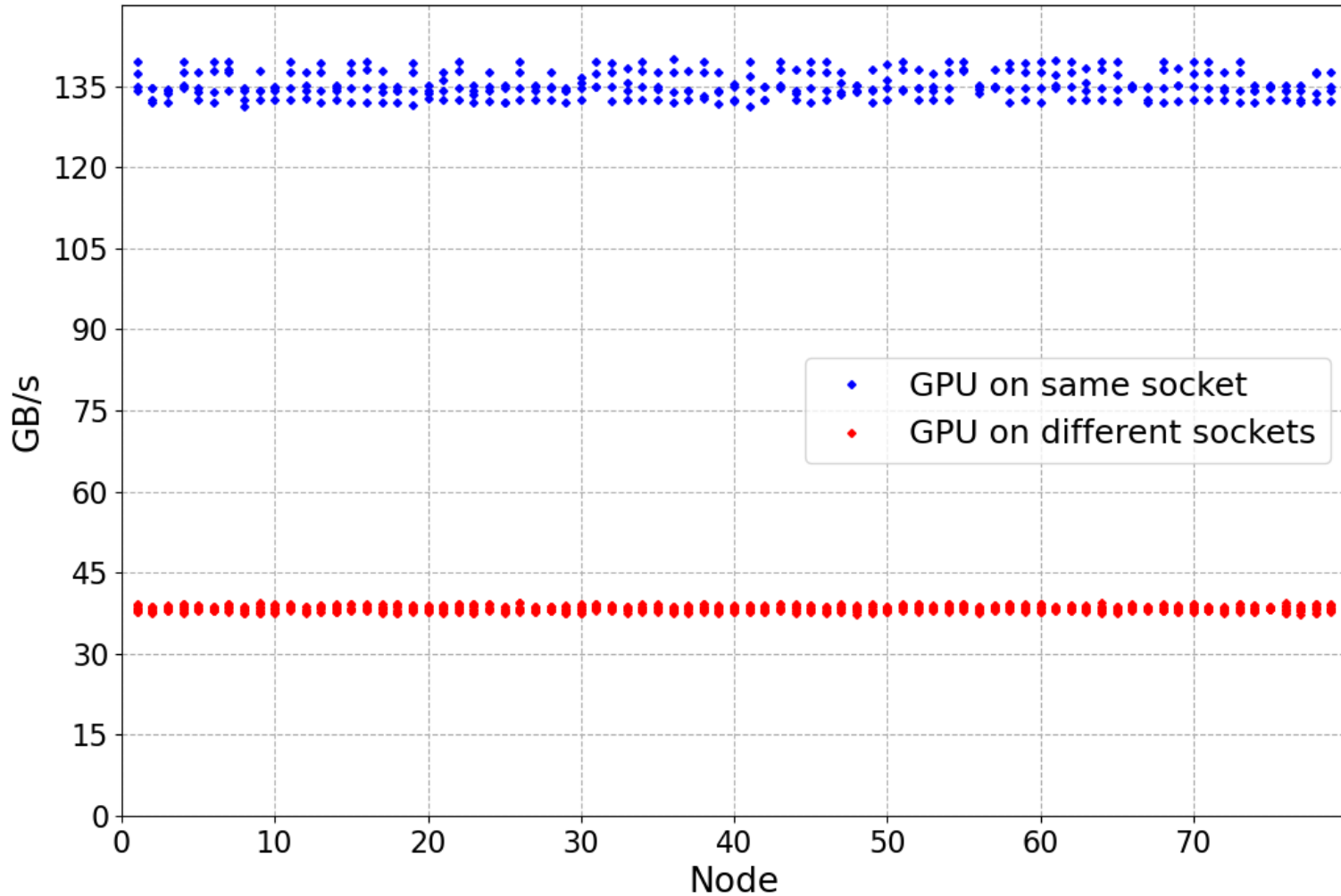
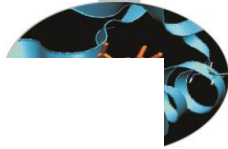
- Sanity threshold 750 Gb/s (no **slow GPUs found**)



Nvlink-GPU



P2P-GPU



FOR OPERATION COMMITTEE:

- No additional Sanity checks are programmed, the results shown here were all fairly recent
- Next maintenance schedule:
January 26th for M100
February 2nd for MARCONI