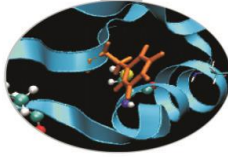
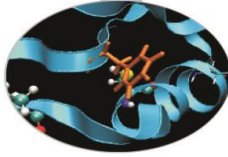


Outline



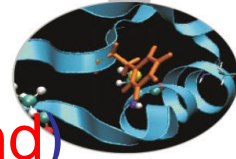
- MARCONI: Sanity checks launched during maintenance on February (linpack, stream, multi-node linpack)
- MARCONI100: Sanity checks on GPU (dgemm, stream, nvlLink, p2p) during production on February

MARCONI – February 2021

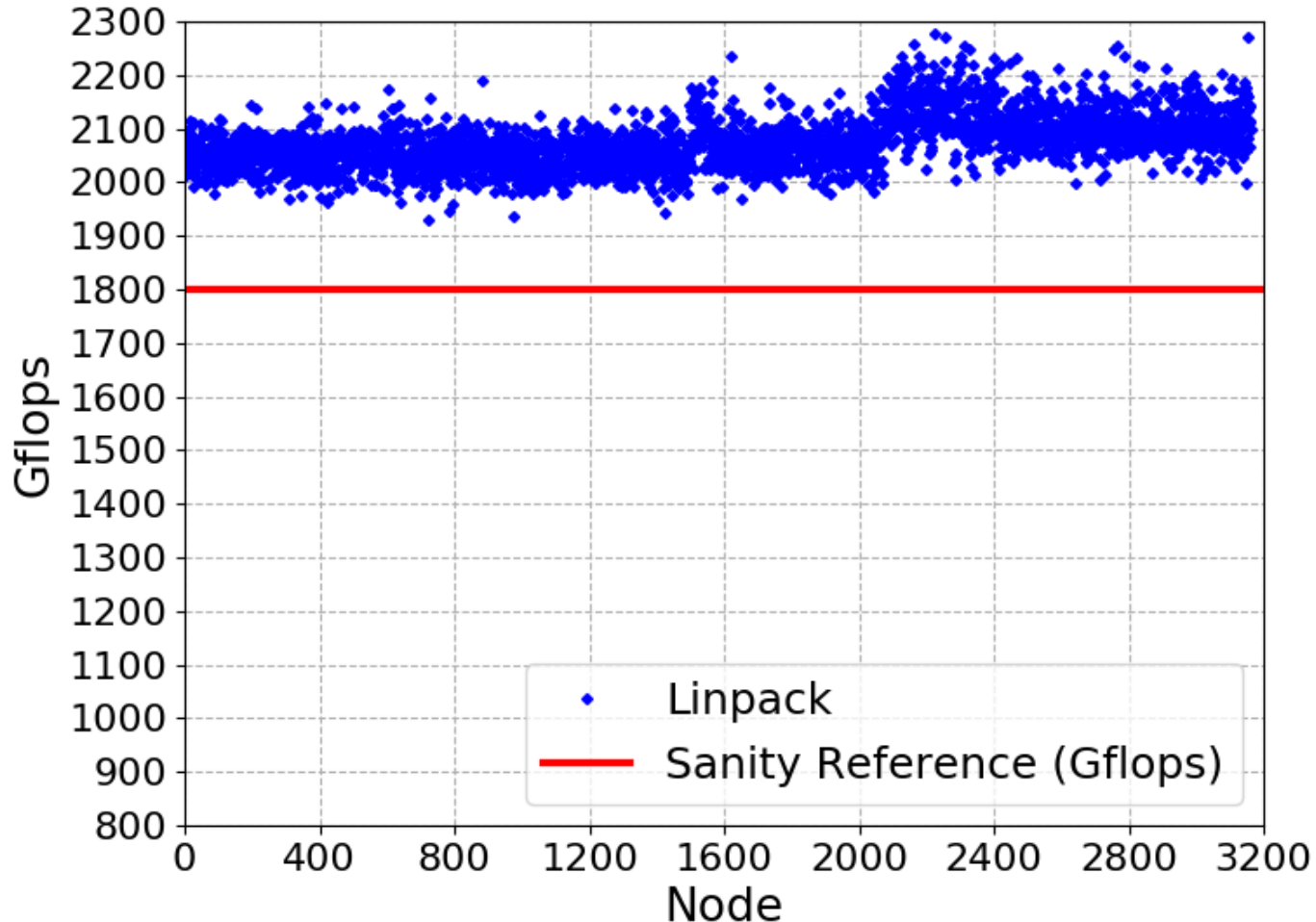


- Tests were performed during maintenance on February 2nd
- Tests: lincpack and stream on each single node of SKL
- Switch-level Linpack tests were performed
- Slow nodes have been removed from production for investigation and fixes

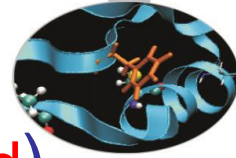
Linpack SKL



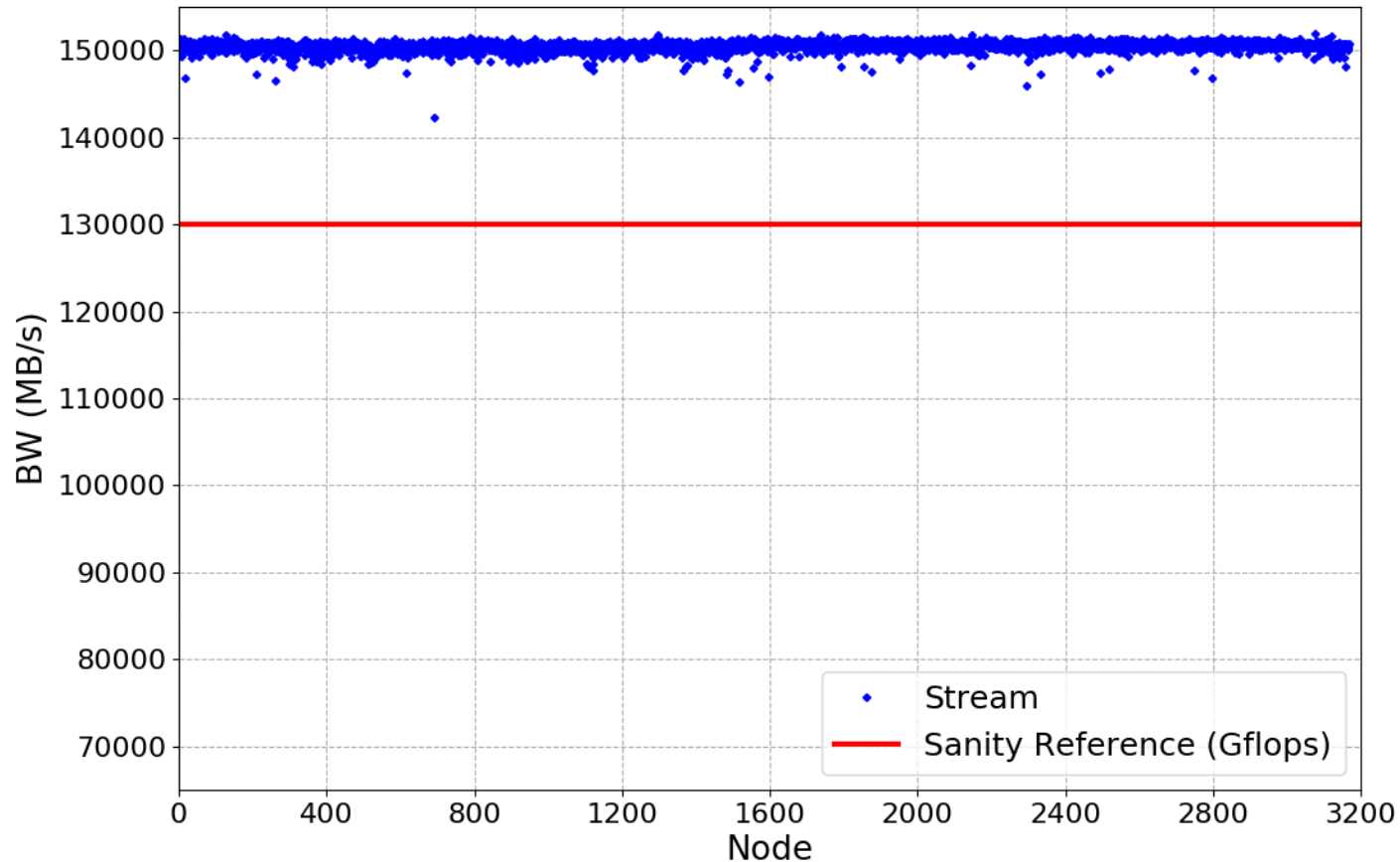
- Sanity threshold: 1800 Gflops (no slow nodes found)

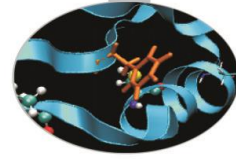


Stream SKL



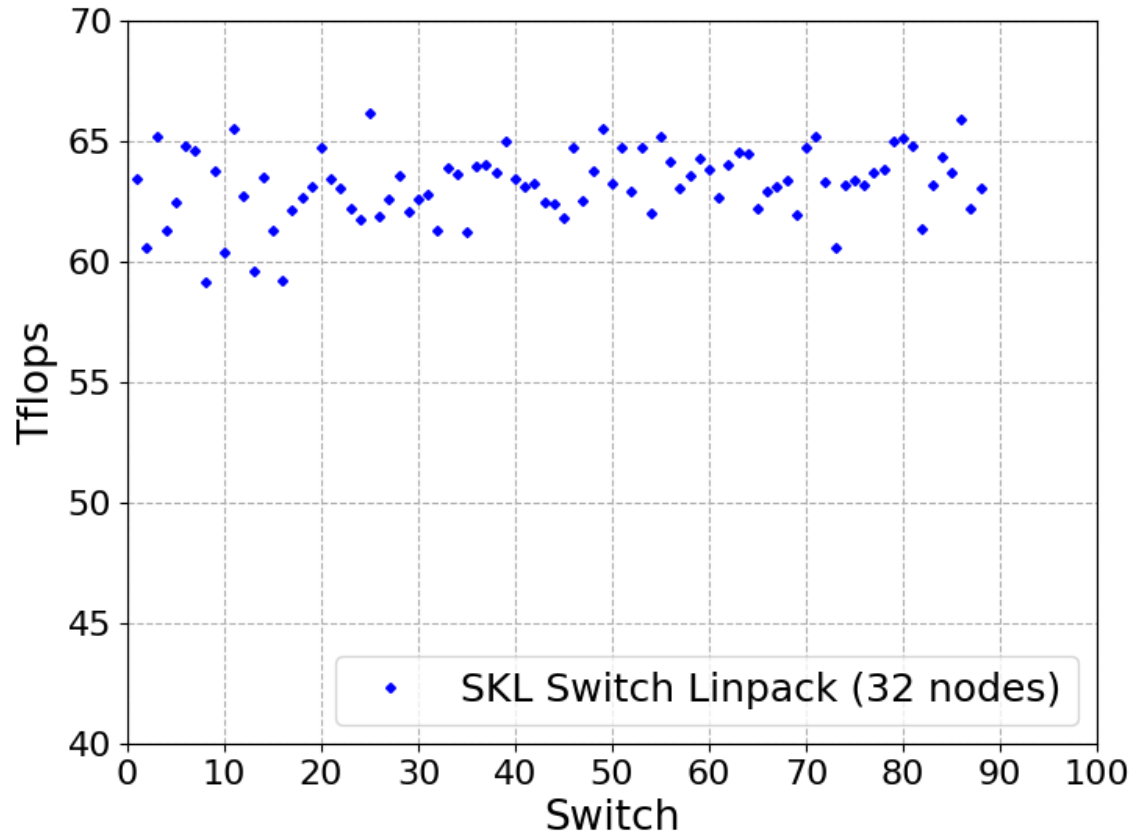
- Sanity threshold: 130000 MB/s (no slow nodes found)



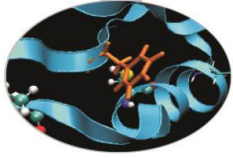


Switch-level Linpack SKL

- 88 switches tested
- Overall stable performance

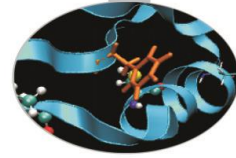


MARCONI100 – January/February 2021

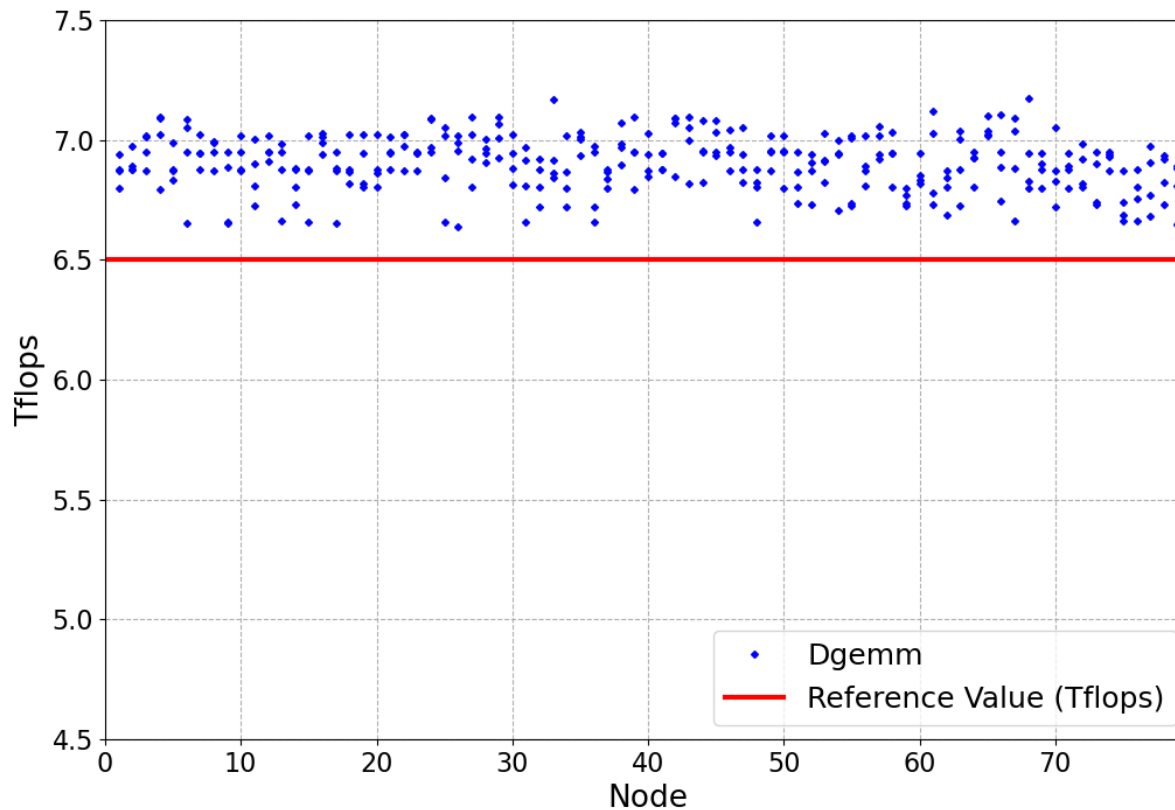


- Sanity checks were performed during maintenance on January 26th
- Tests: dgemm, stream-GPU, nvlink and p2p on each single node of M100
- Results from the nodes of EUROFusion partition are shown

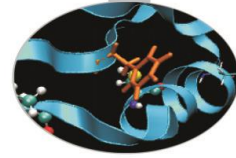
Dgemmm



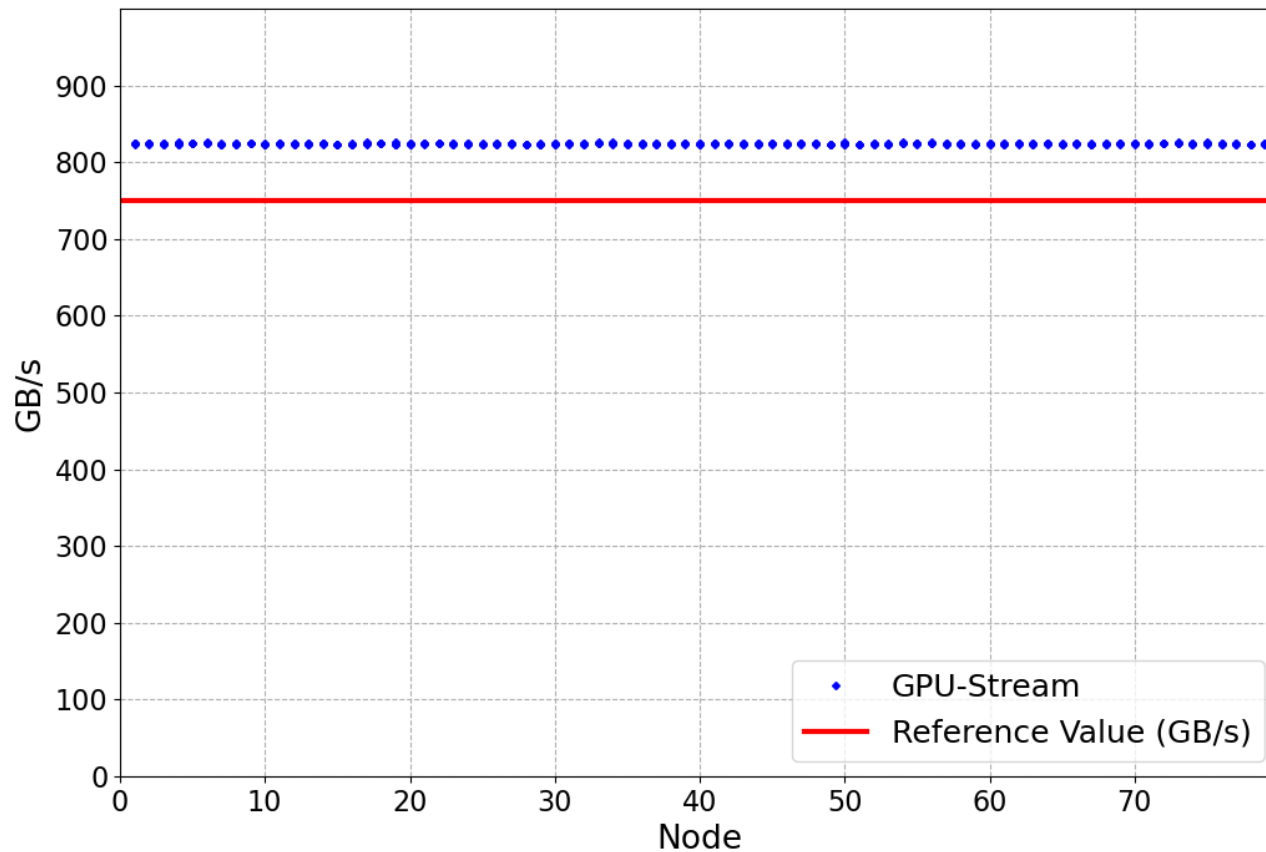
- Sanity threshold: 6.5 Tflops (no slow GPUs found)



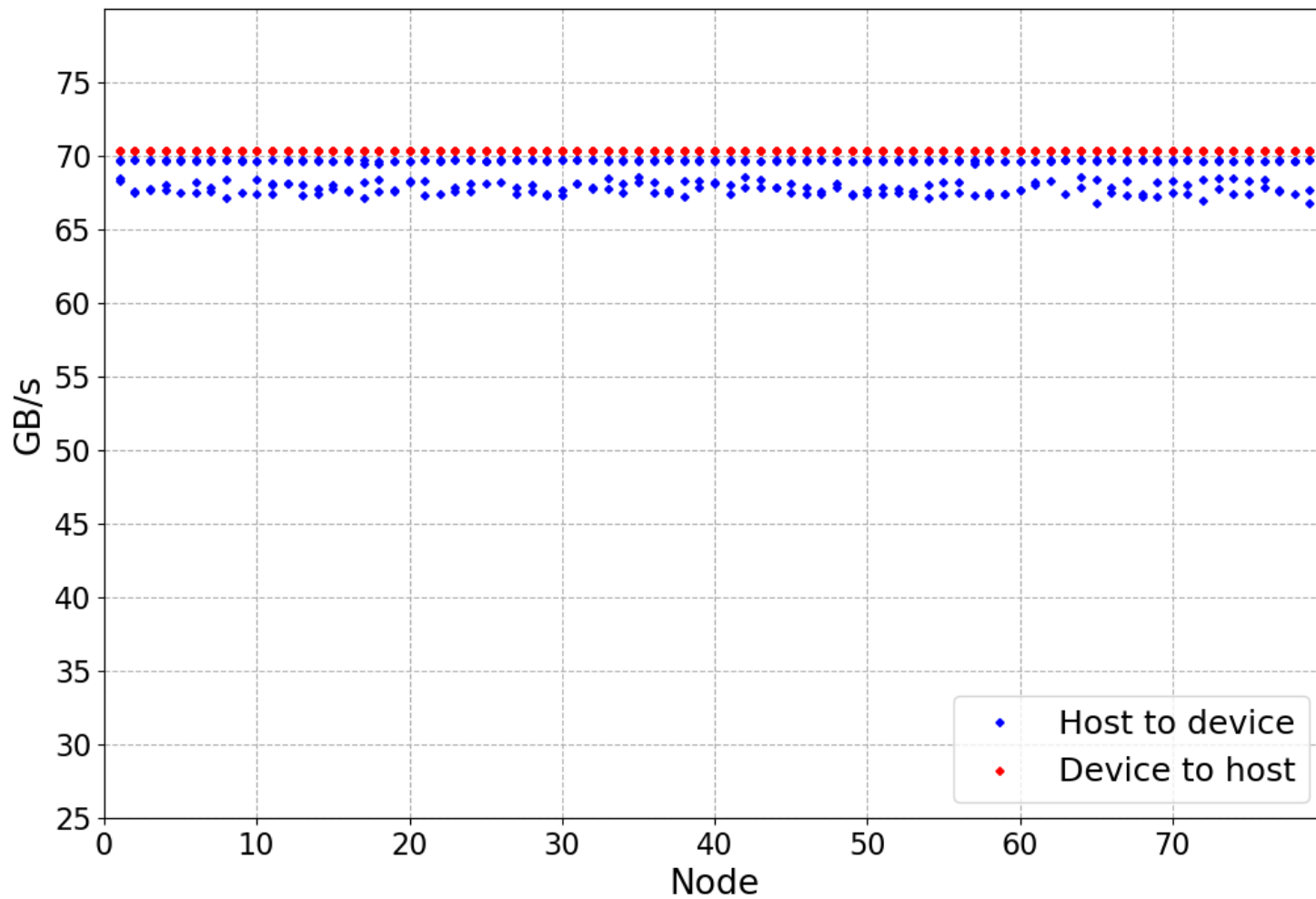
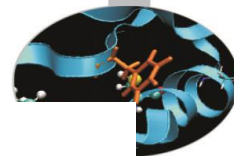
Stream-GPU



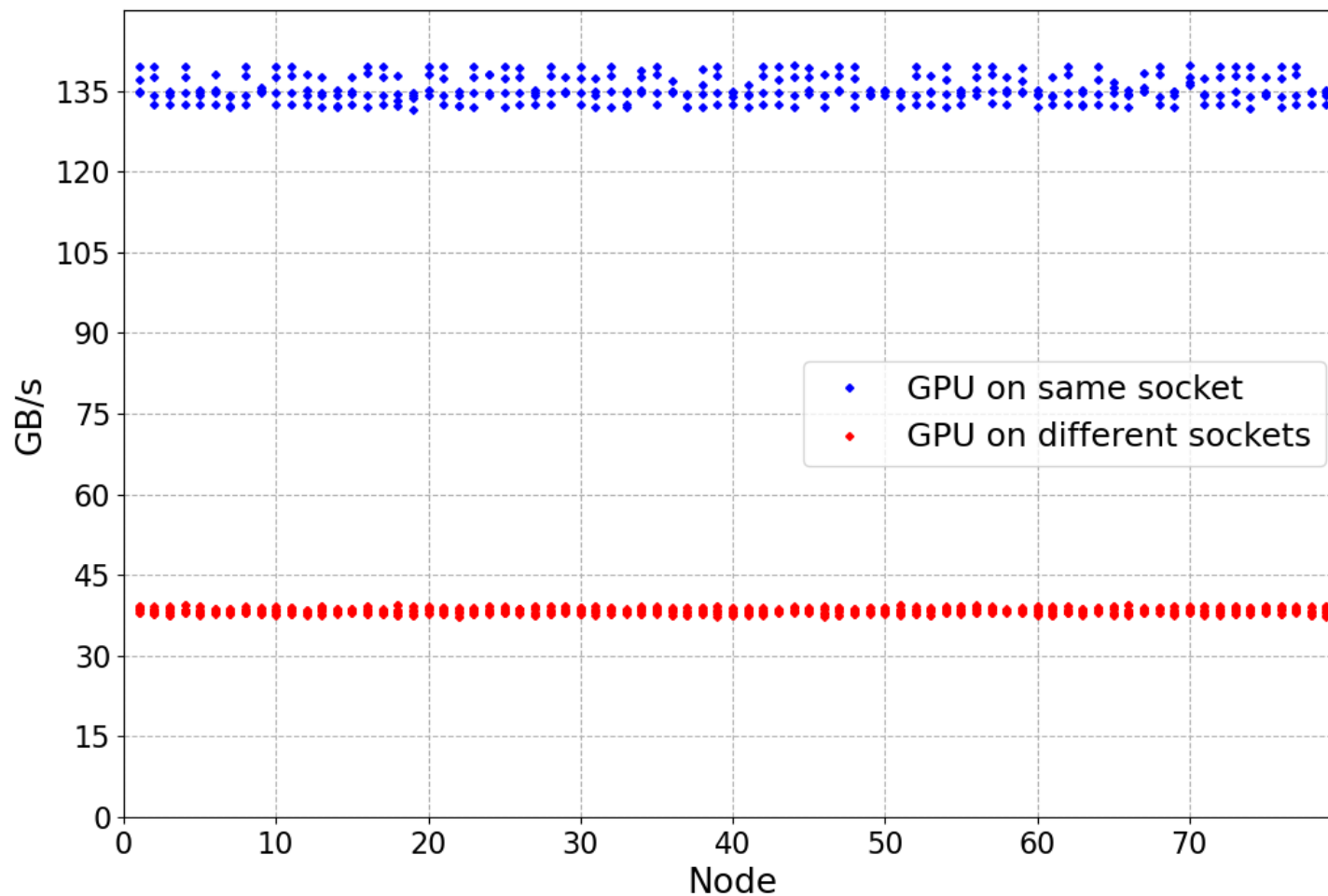
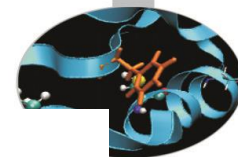
- Sanity threshold 750 Gb/s (no **slow GPUs found**)



Nvlink-GPU



P2P-GPU



FOR OPERATION COMMITTEE:

- Results on Sanity Checks for MARCONI100, available after next week's maintenance
- Next maintenance schedule:
February 23rd for M100
March 2nd for MARCONI