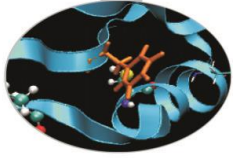
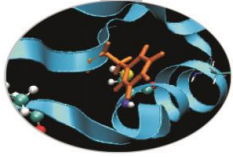


# Outline



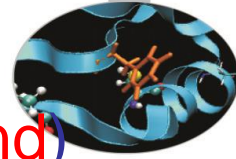
- MARCONI: Sanity checks launched during maintenance on March (linpack, stream, multi-node linpack)
- MARCONI100: Sanity checks on GPU (dgemm, stream, nvlm, p2p) during Maintenance on February and March

# MARCONI – March 2021

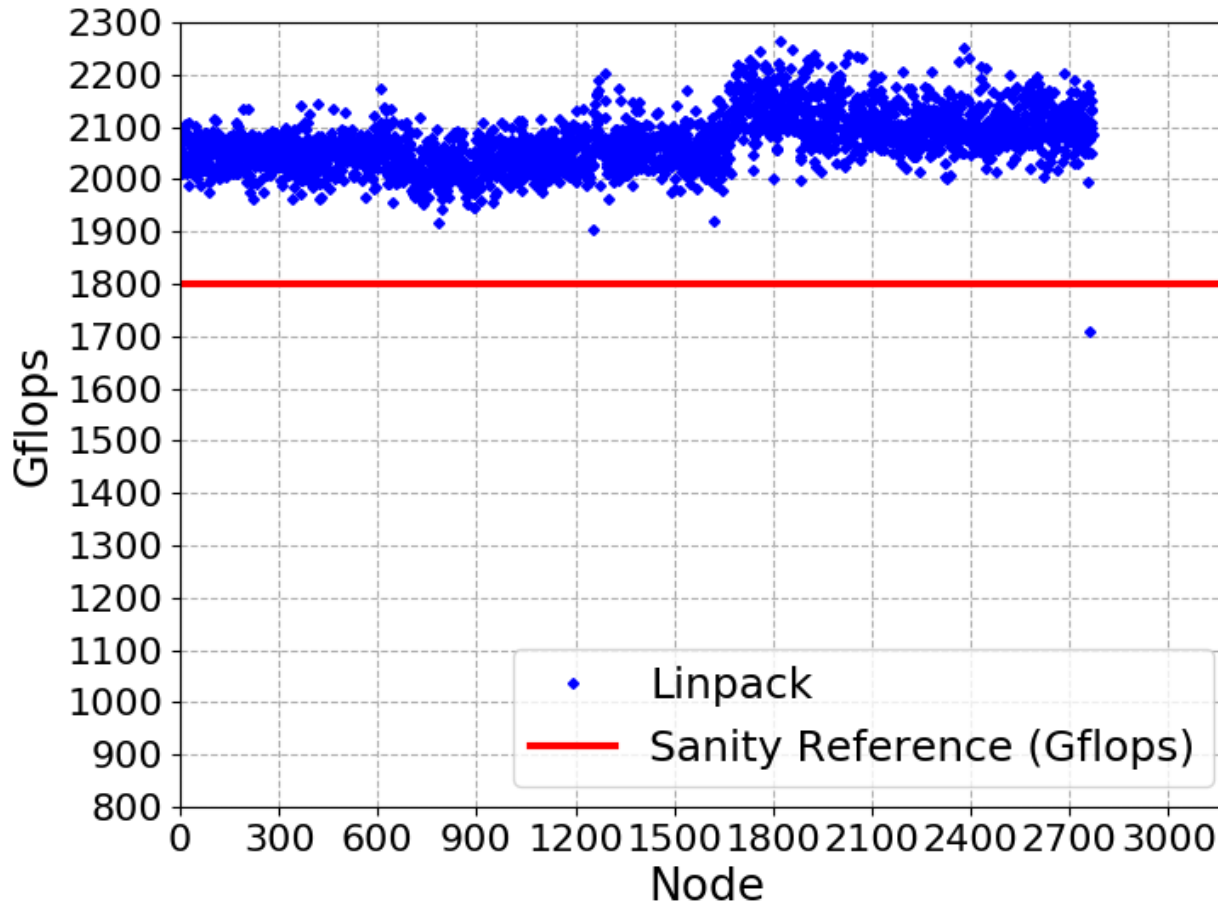


- Tests were performed during maintenance on March 2<sup>nd</sup>
- Tests: lincpack and stream on each single node of SKL
- Switch-level Linpack tests were performed
- Slow nodes have been removed from production for investigation and fixes

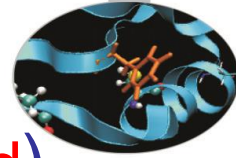
# Linpack SKL



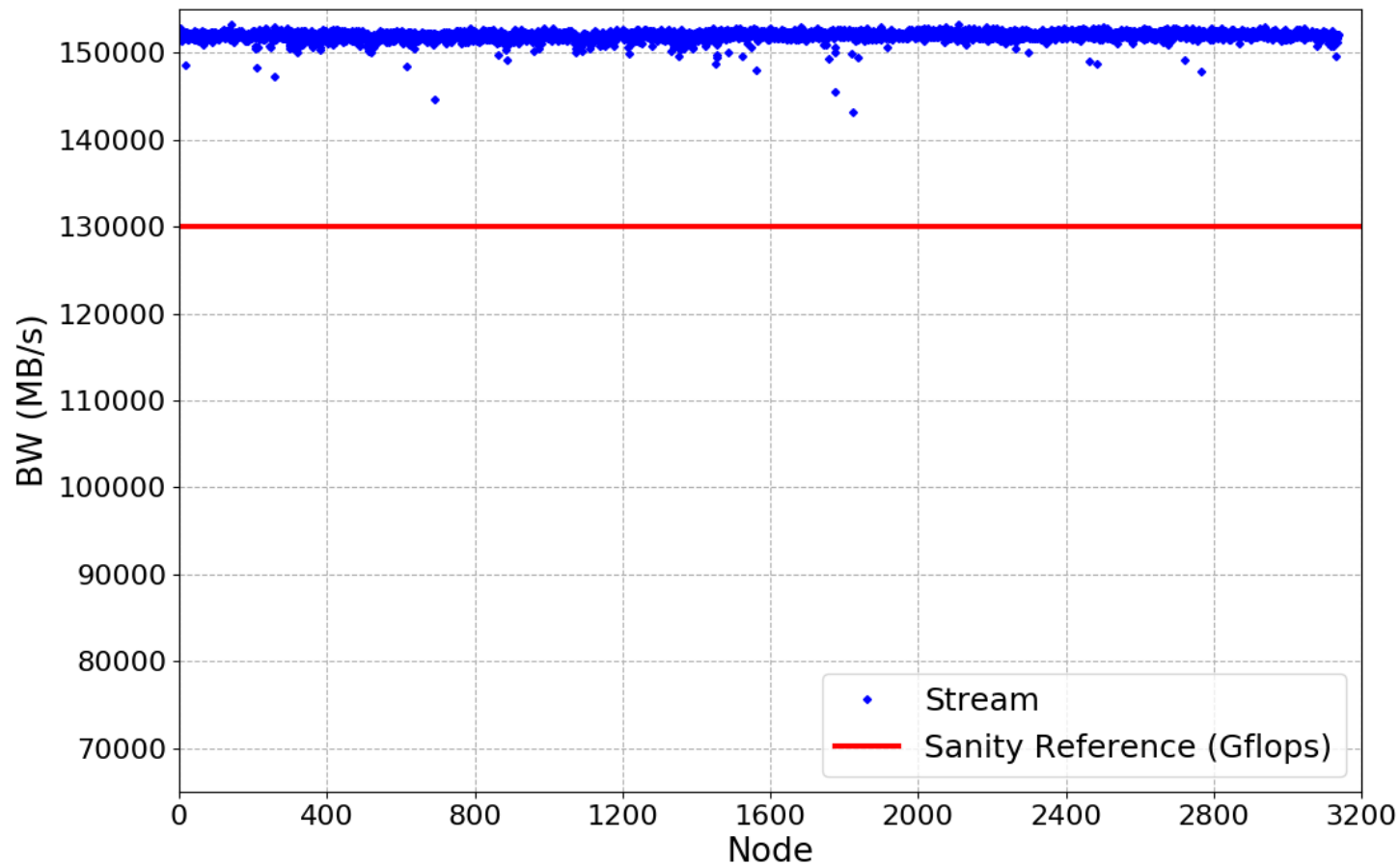
- Sanity threshold: 1800 Gflops (one slow node found)



# Stream SKL



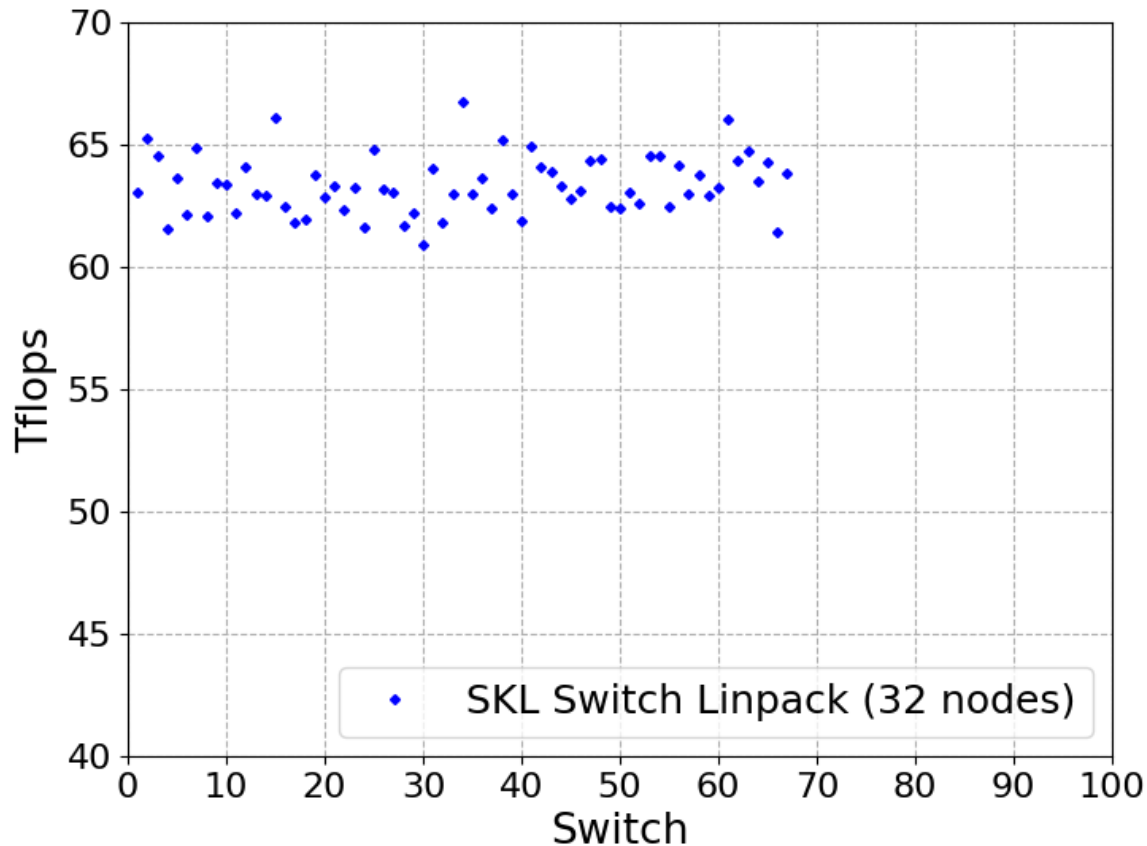
- Sanity threshold: 130000 MB/s (no slow nodes found)



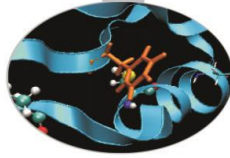


# Switch-level Linpack SKL

- 72 switches tested
- Overall stable performance

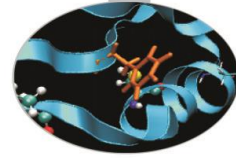


# MARCONI100 – February 2021

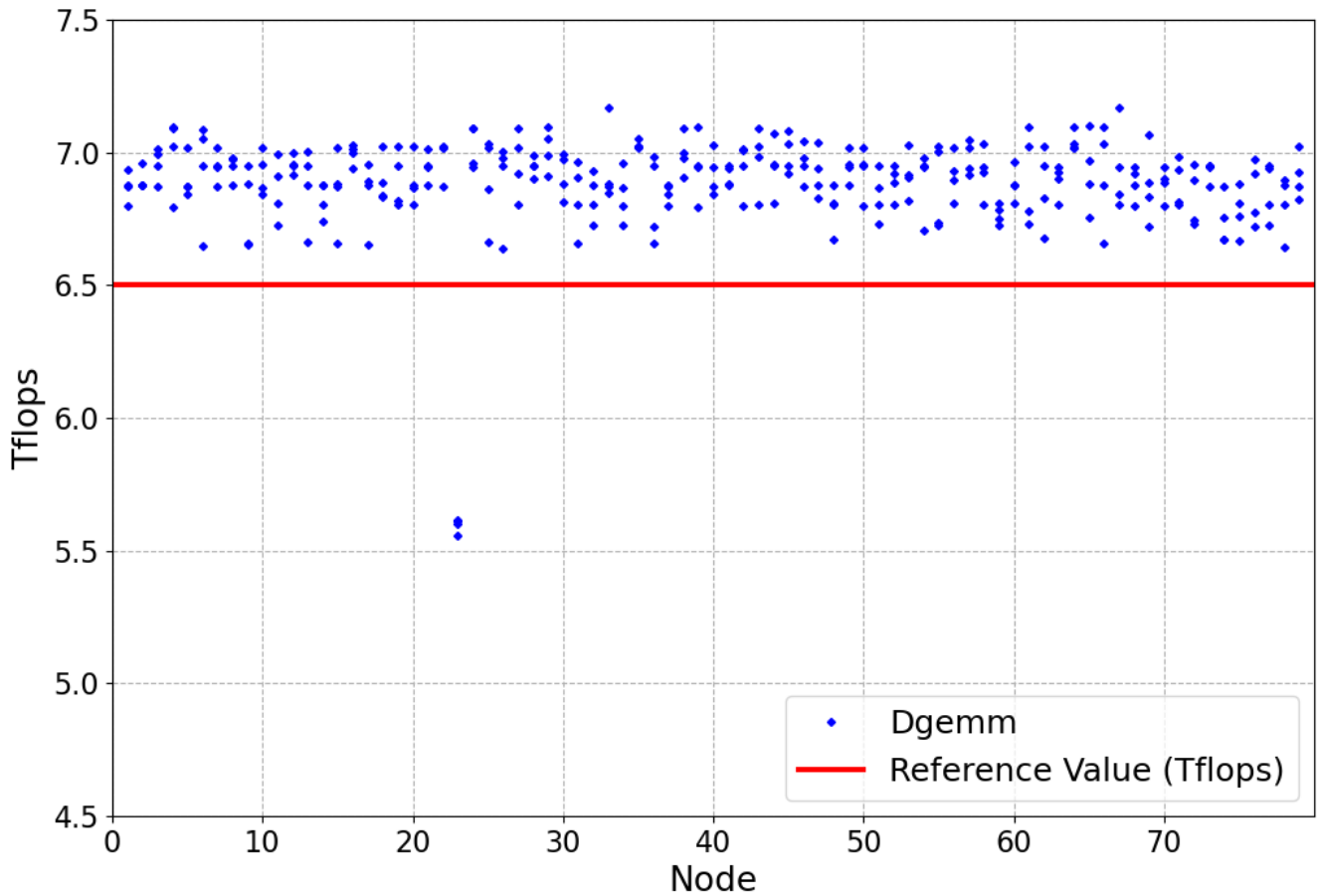


- Sanity checks were performed during maintenance on February 23<sup>rd</sup>
- Tests: dgemm, stream-GPU, nvlink and p2p on each single node of M100
- Results from the nodes of EUROFusion partition are shown

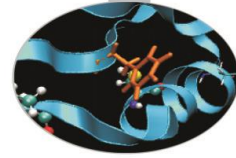
# Dgemmm



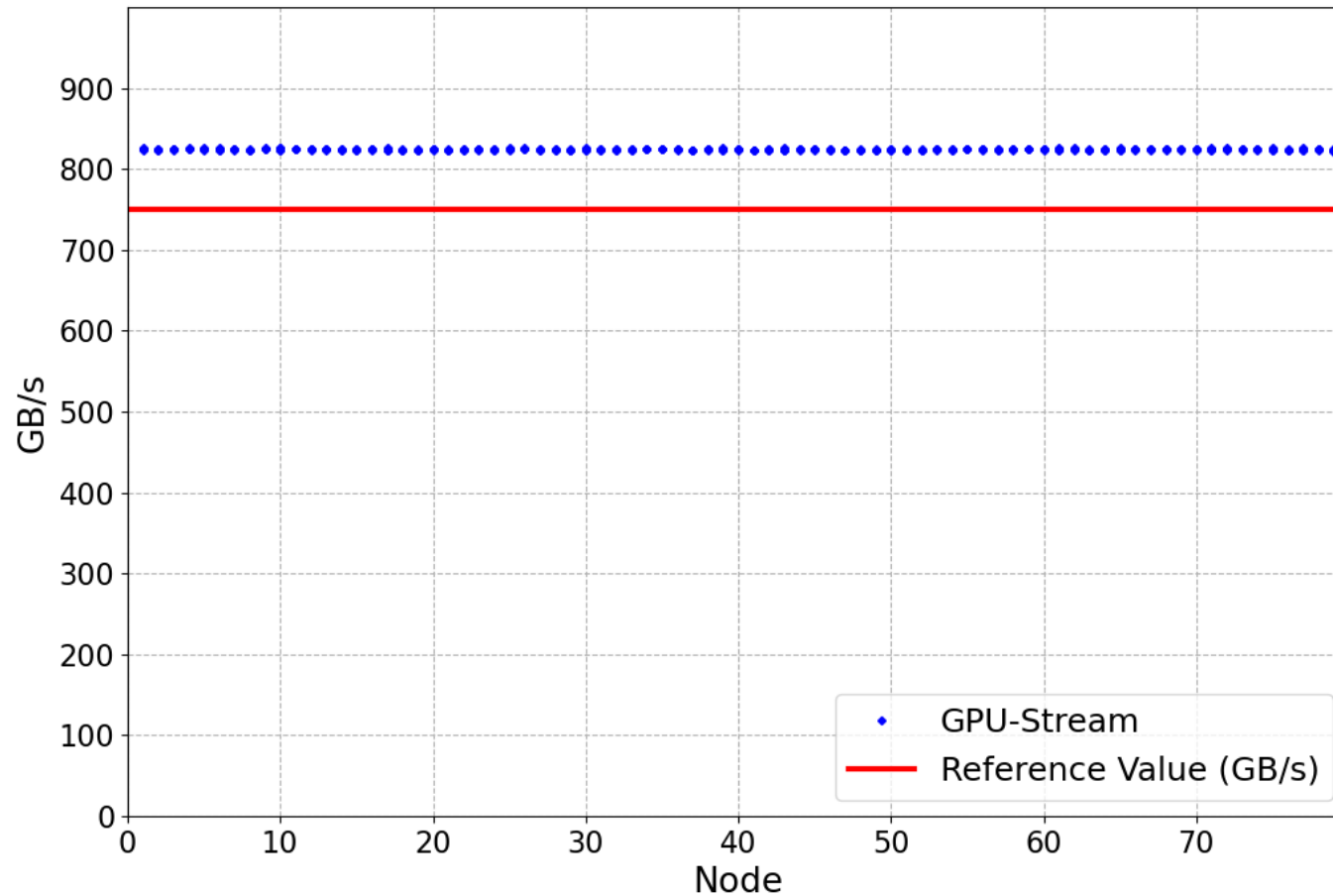
- Sanity threshold: 6.5 Tflops (two slow GPUs found)



# Stream-GPU

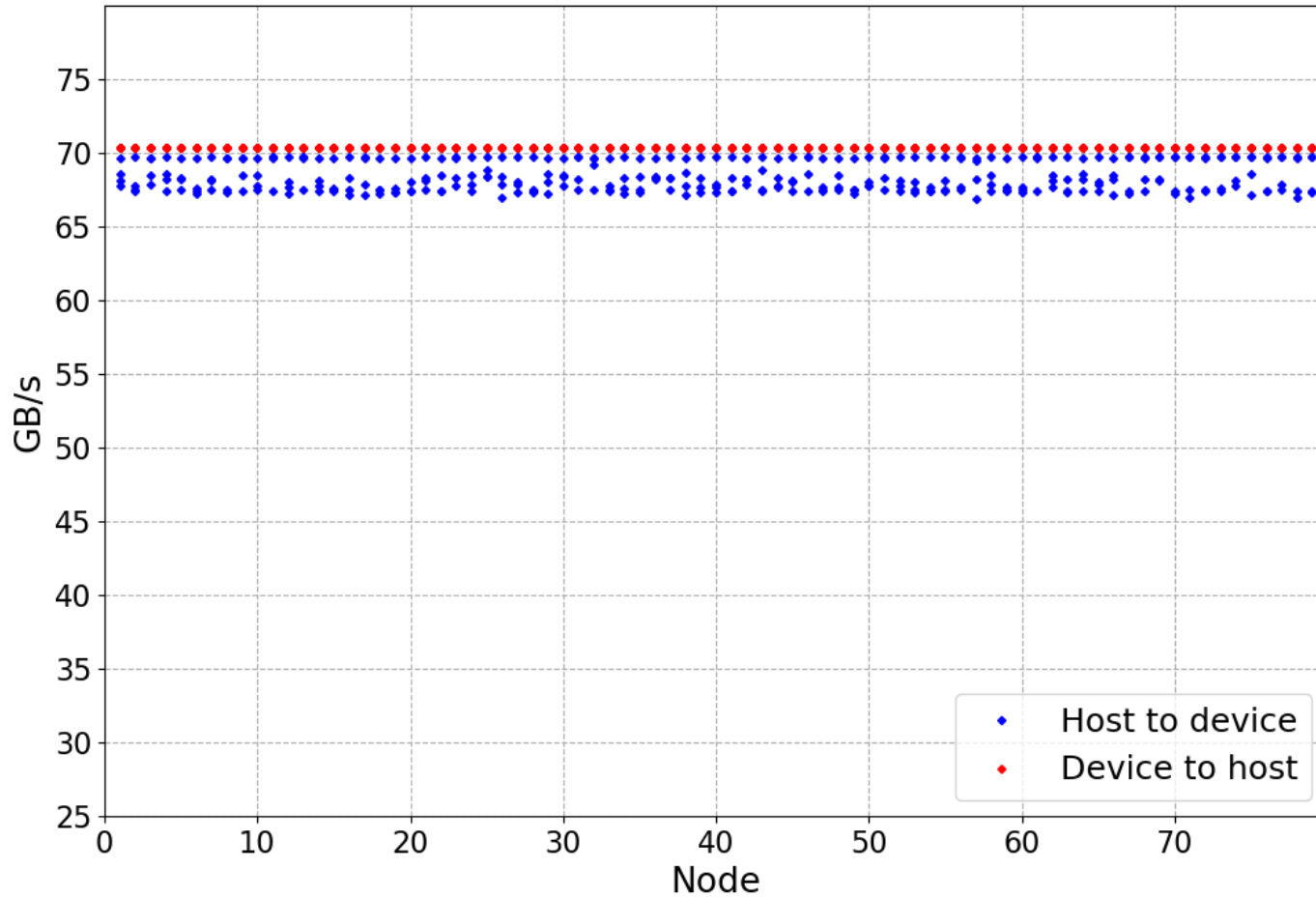
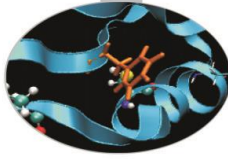


- Sanity threshold 750 Gb/s (no **slow GPUs found**)

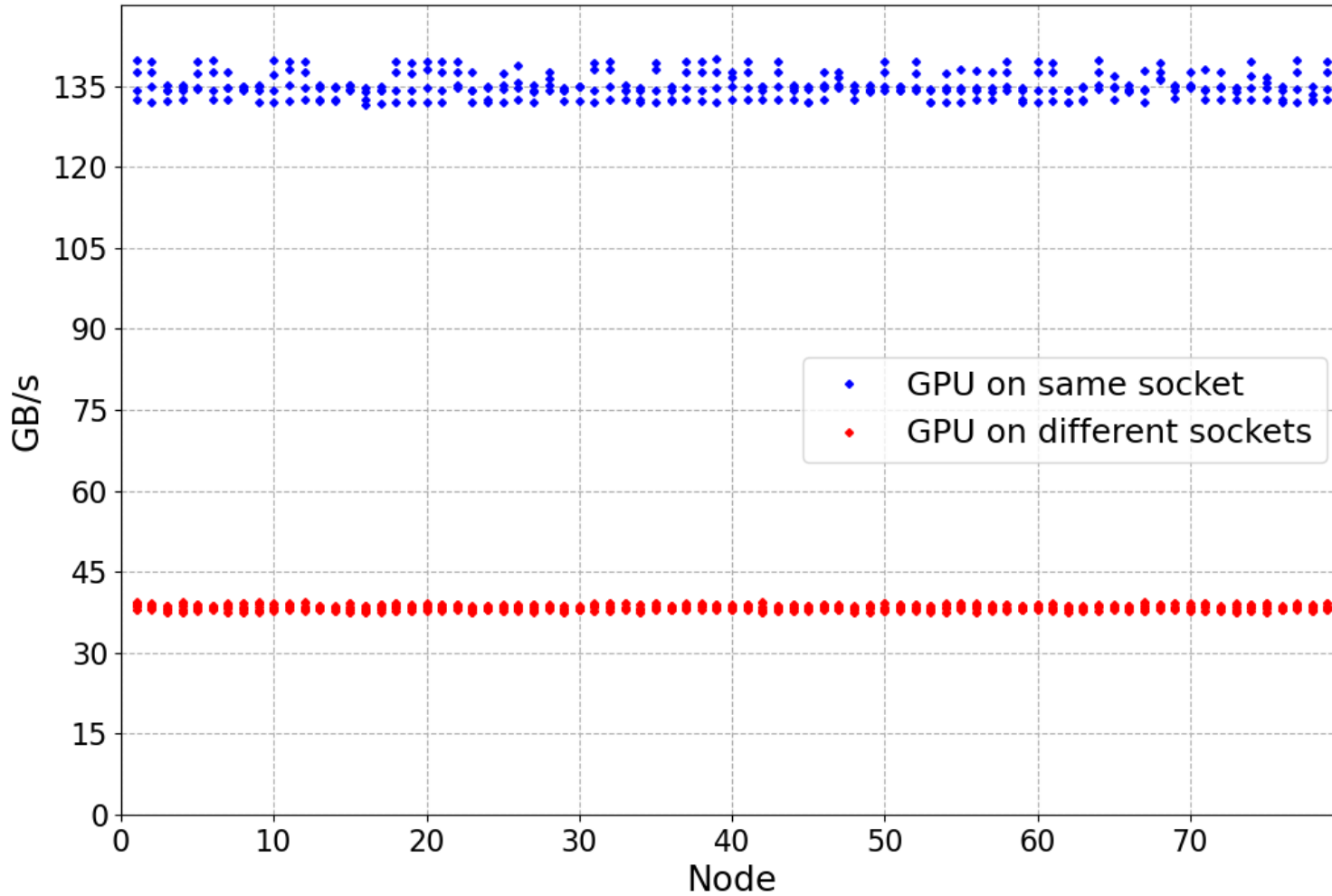
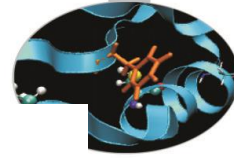




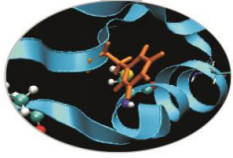
# Nvlink-GPU



# P2P-GPU

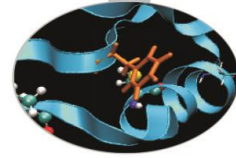


# MARCONI100 – March 2021

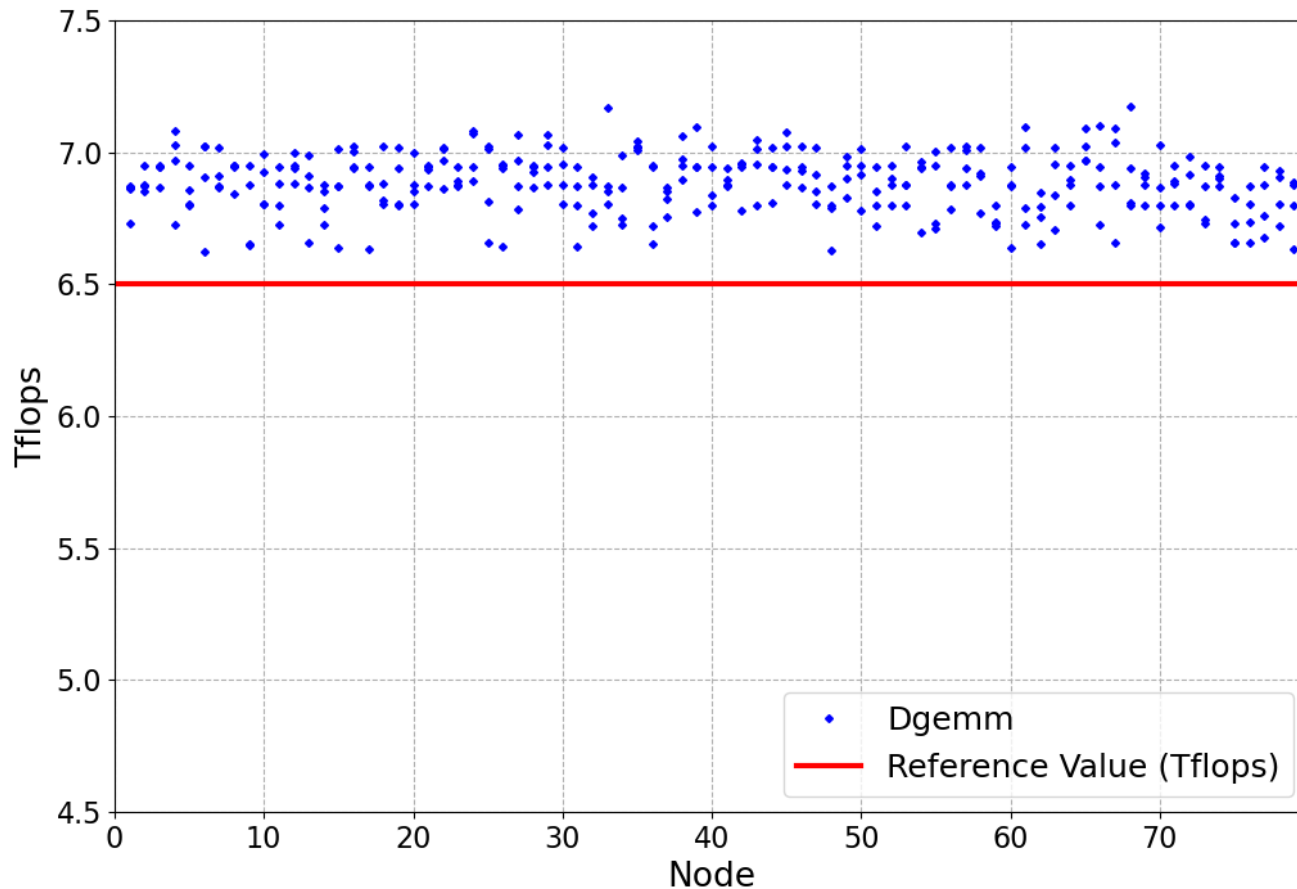


- Sanity checks were performed during maintenance on February 16<sup>th</sup>
- Tests: dgemm, stream-GPU, nvlink and p2p on each single node of M100
- Results from the nodes of EUROFusion partition are shown

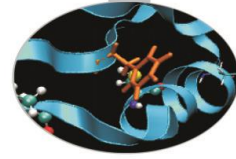
# Dgemmm



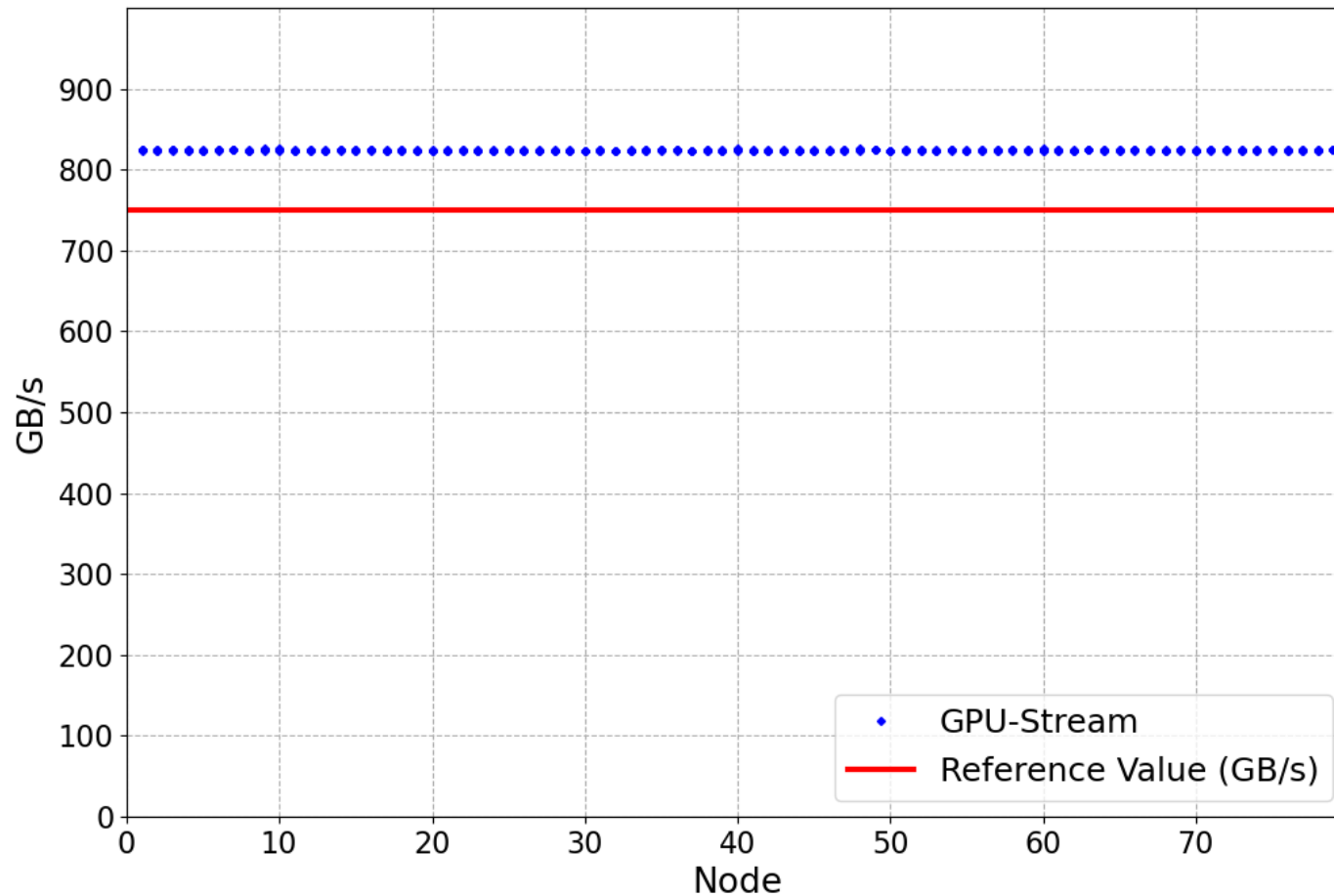
- Sanity threshold: 6.5 Tflops (two slow GPUs found)



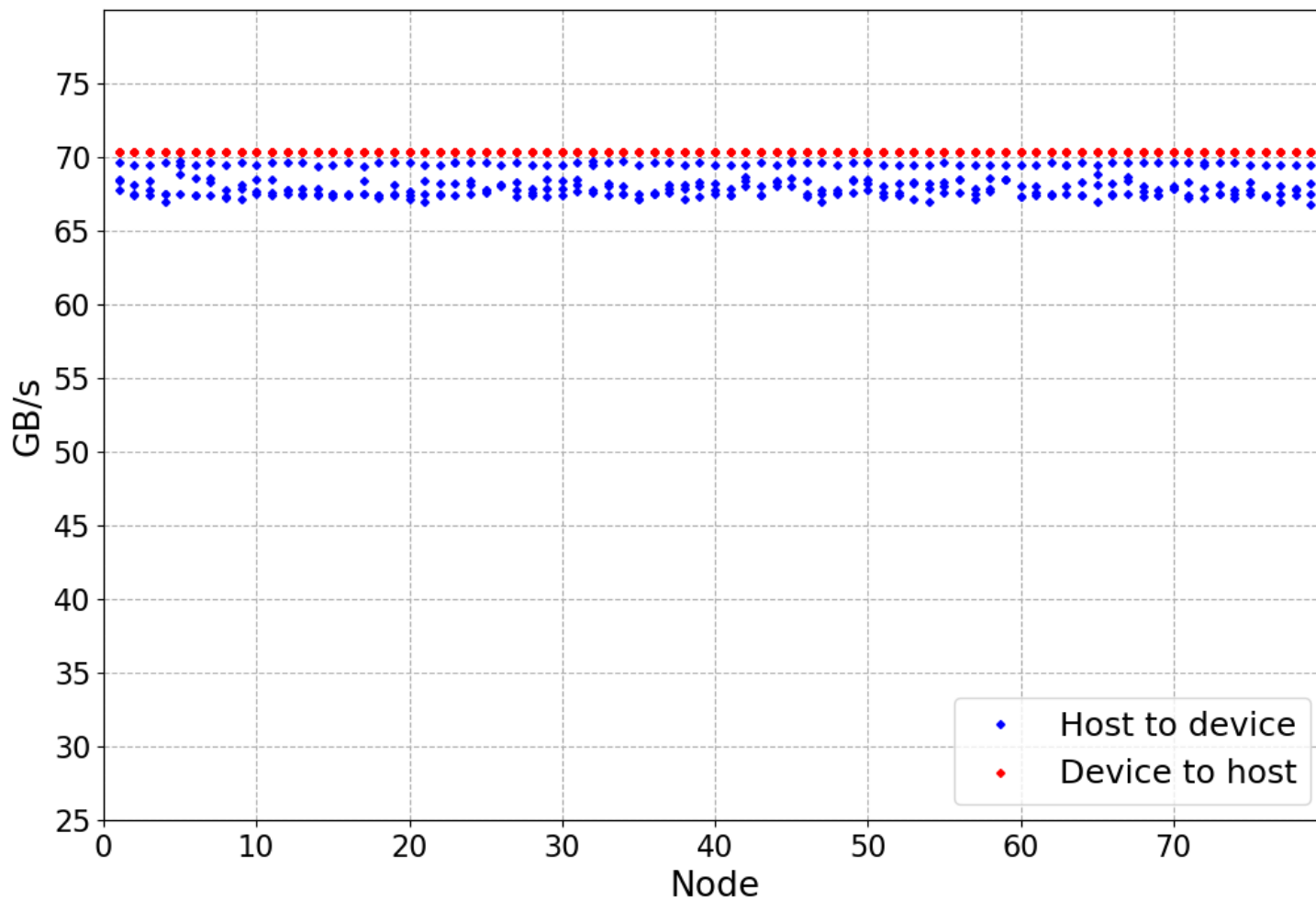
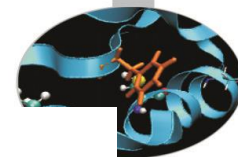
# Stream-GPU



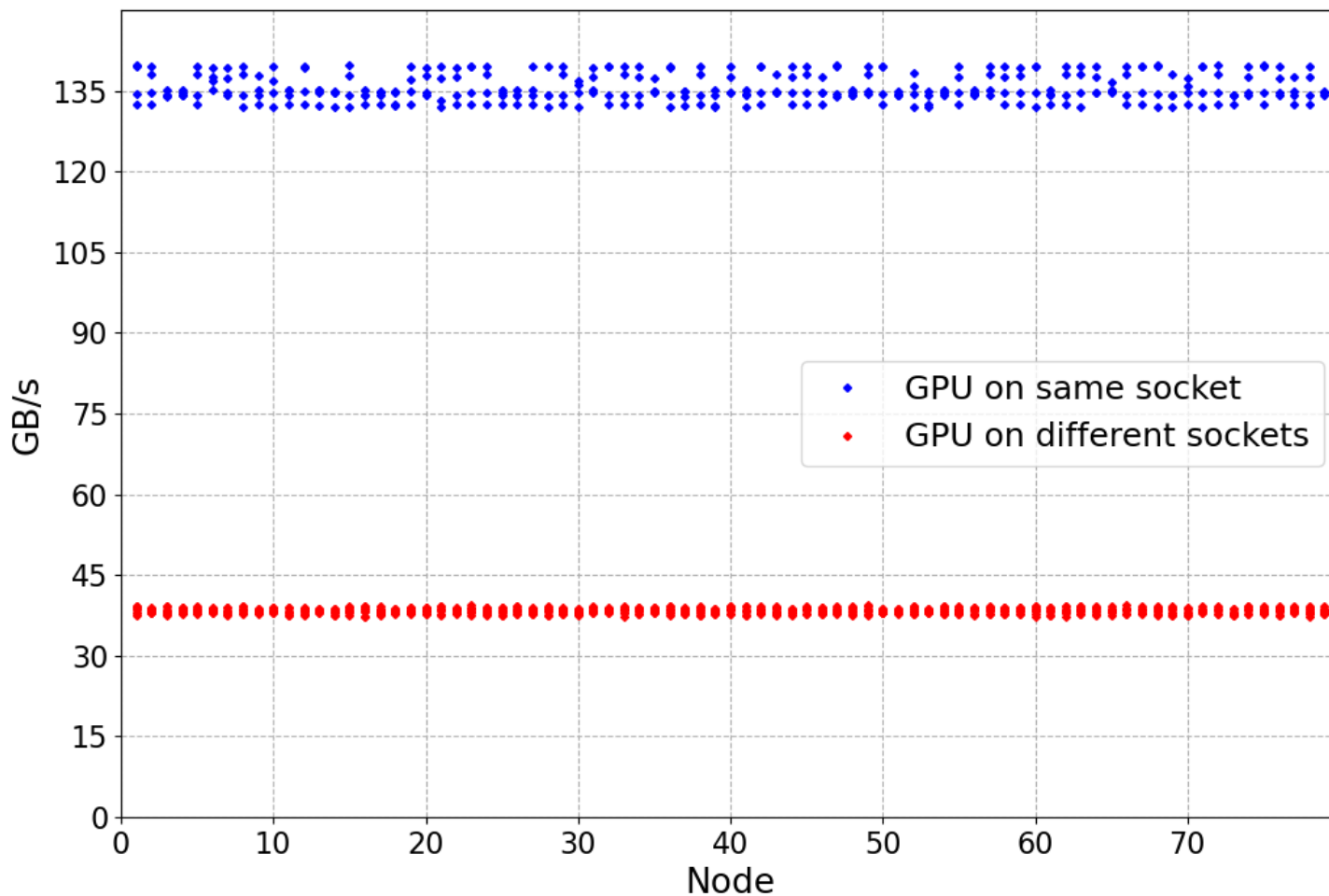
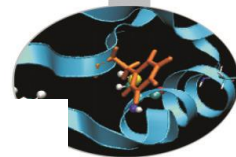
- Sanity threshold 750 Gb/s (no **slow GPUs found**)



# Nvlink-GPU



# P2P-GPU



## FOR OPERATION COMMITTEE:

- No results on Sanity Checks to send, since OC is tomorrow March 19<sup>th</sup>
- Next maintenance schedule:  
March 23<sup>rd</sup> for M100 (extra-ordinary)  
April 6<sup>th</sup> for MARCONI