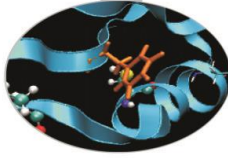
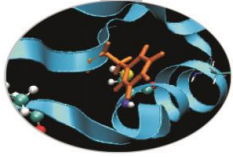


# Outline



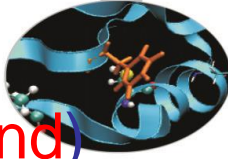
- MARCONI: Sanity checks launched during maintenance on April (linpack, stream, multi-node linpack)
- MARCONI100: Sanity checks on GPU (dgemm, stream, nvlink, p2p) during Maintenance on March and production on April

# MARCONI – April 2021

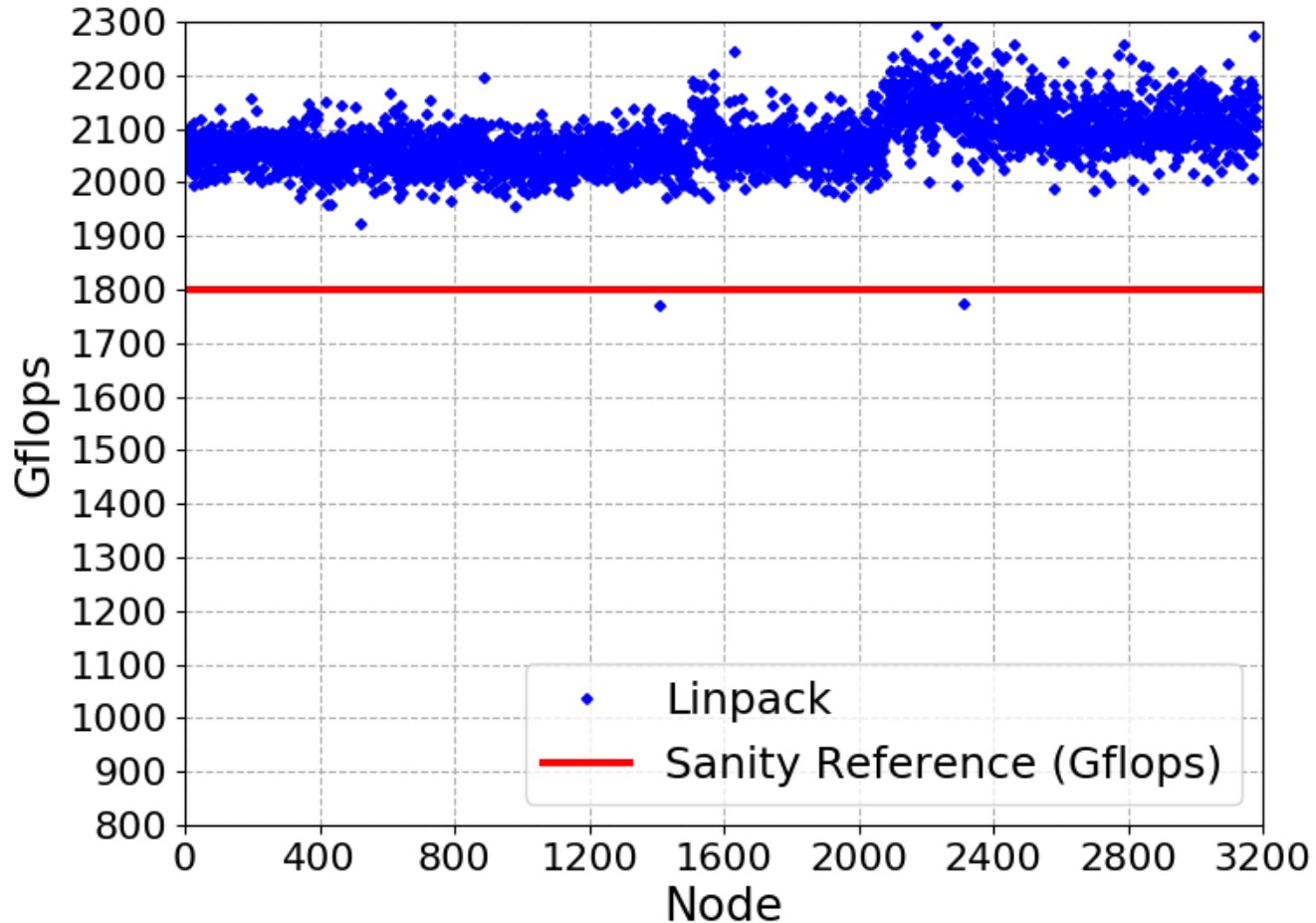


- Tests were performed during maintenance on April 13<sup>th</sup>
- Tests: linpack and stream on each single node of SKL
- Switch-level Linpack tests were performed
- Slow nodes have been removed from production for investigation and fixes

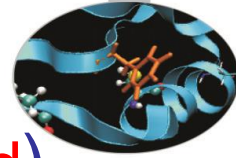
# Linpack SKL



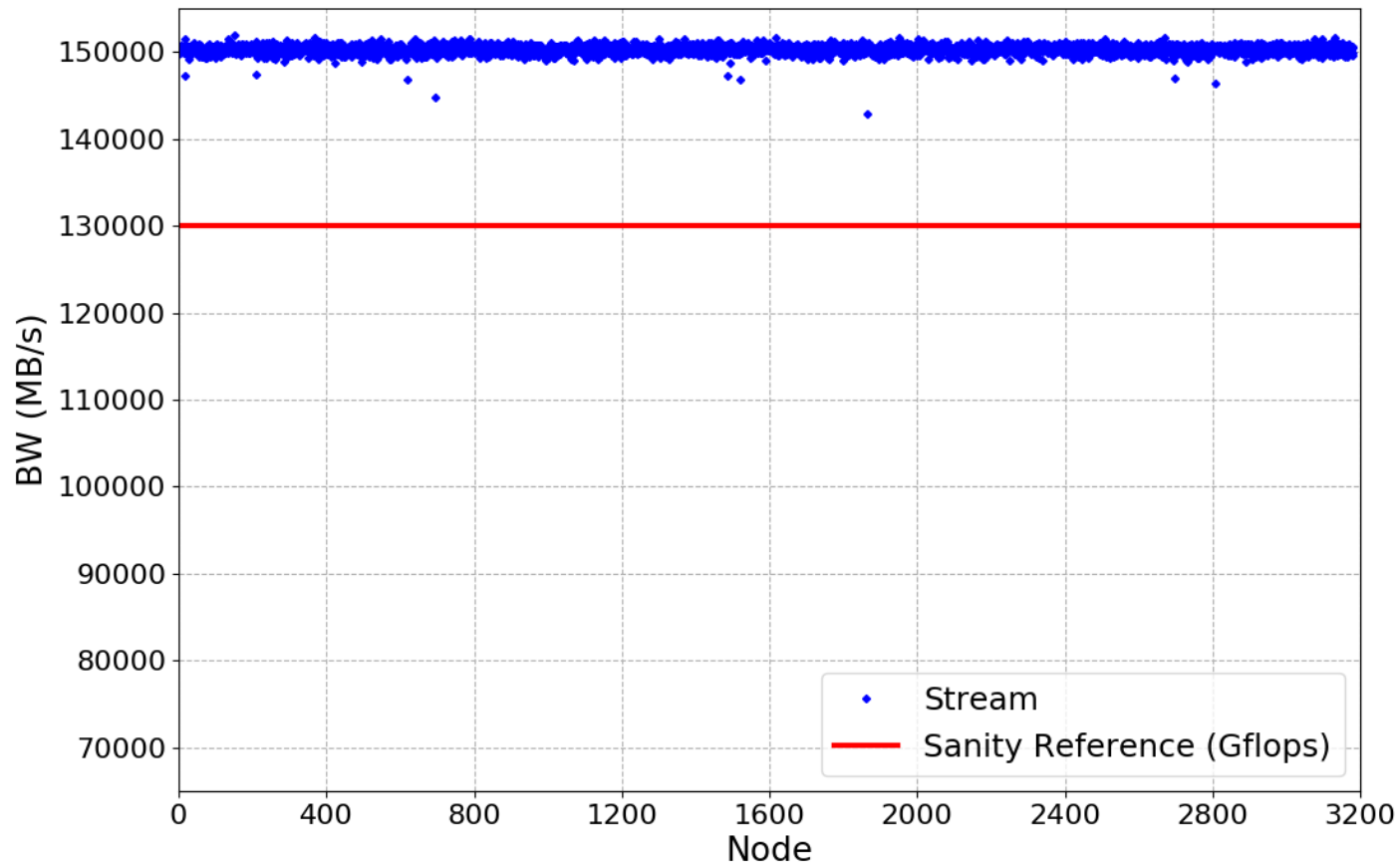
- Sanity threshold: 1800 Gflops (two slow nodes found)

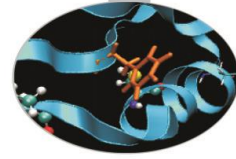


# Stream SKL



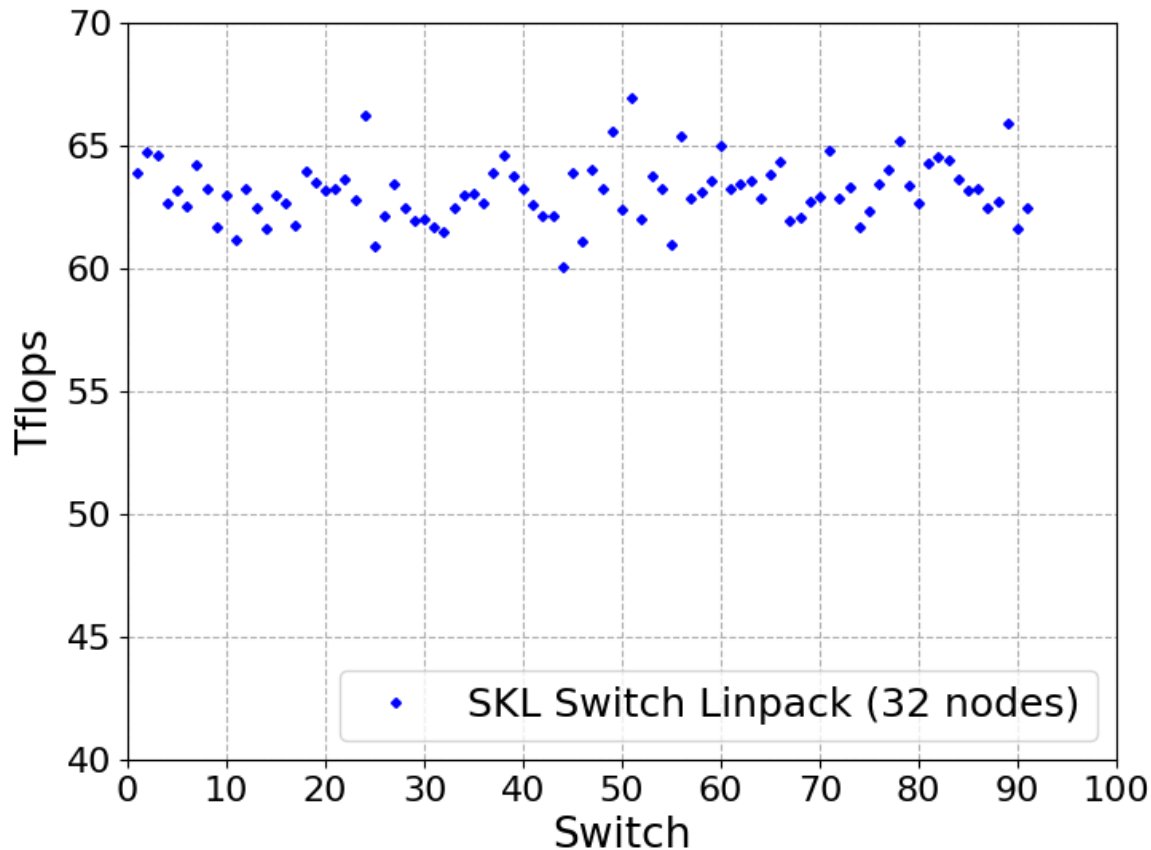
- Sanity threshold: 130000 MB/s (no slow nodes found)



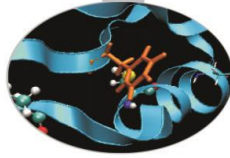


# Switch-level Linpack SKL

- 91 switches tested
- Overall stable performance

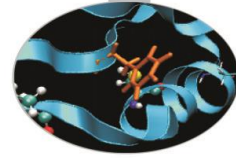


# MARCONI100 – March 2021

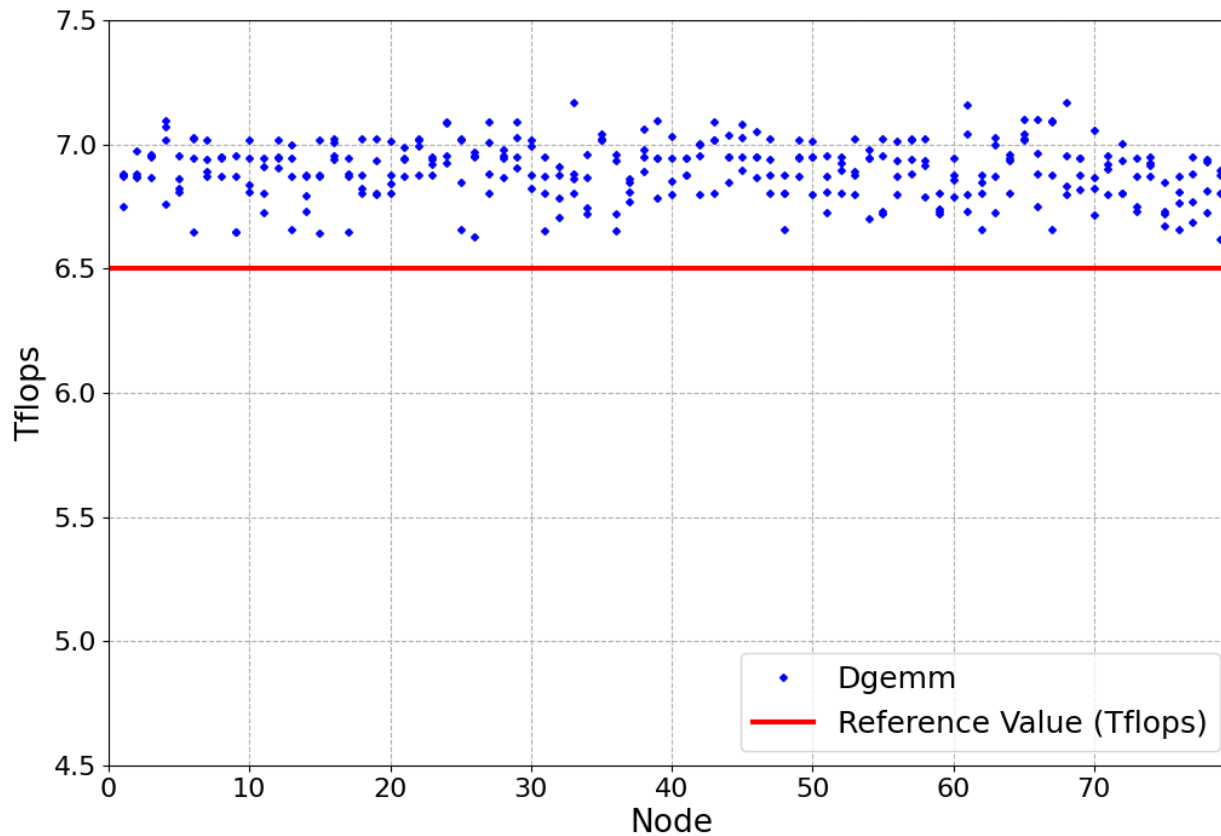


- Sanity checks were performed during maintenance on March 24<sup>th</sup>
- Tests: dgemm, stream-GPU, nvlink and p2p on each single node of M100
- Results from the nodes of EUROFusion partition are shown
- NOTE: this was made before the rack increase, so the results for 80 nodes are shown

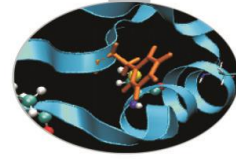
# Dgemmm



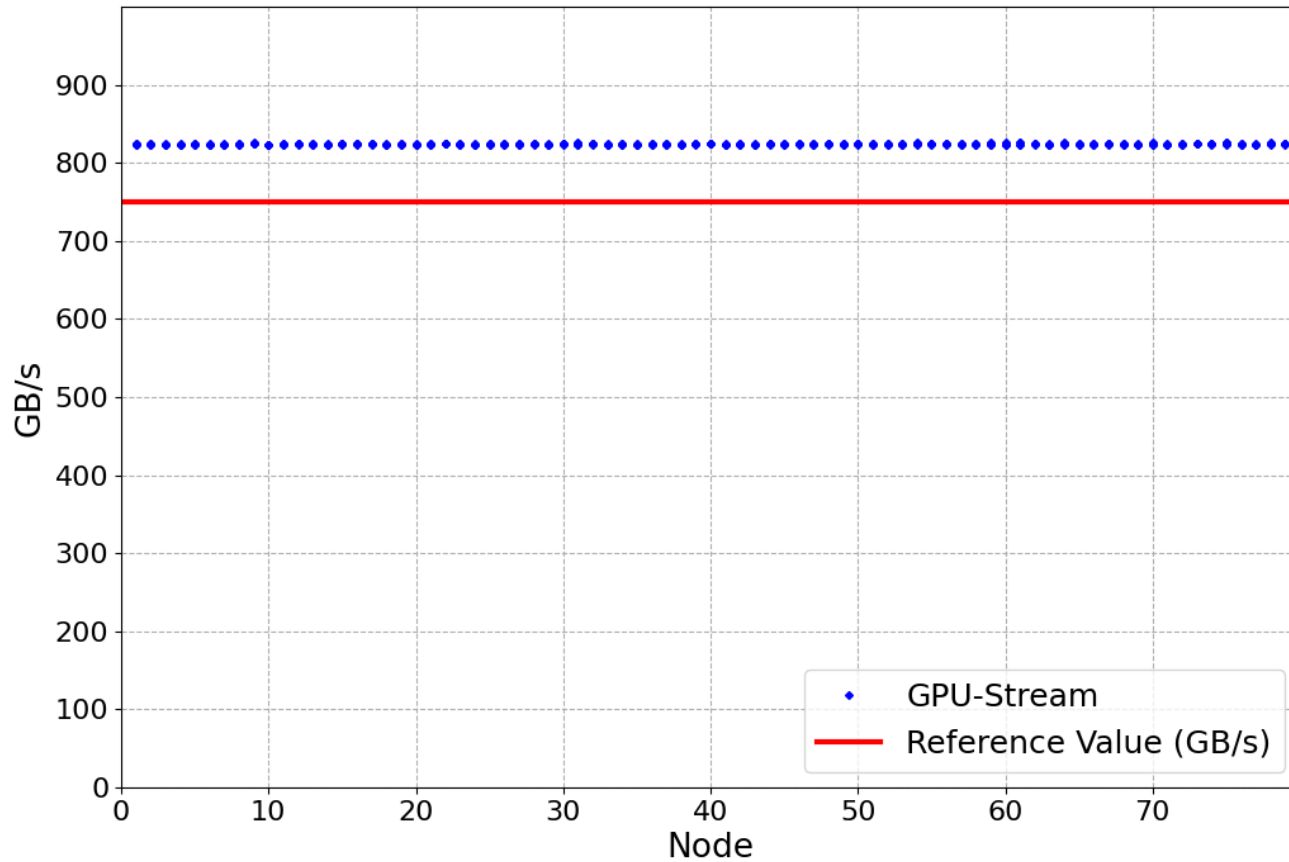
- Sanity threshold: 6.5 Tflops (no slow GPUs found)



# Stream-GPU

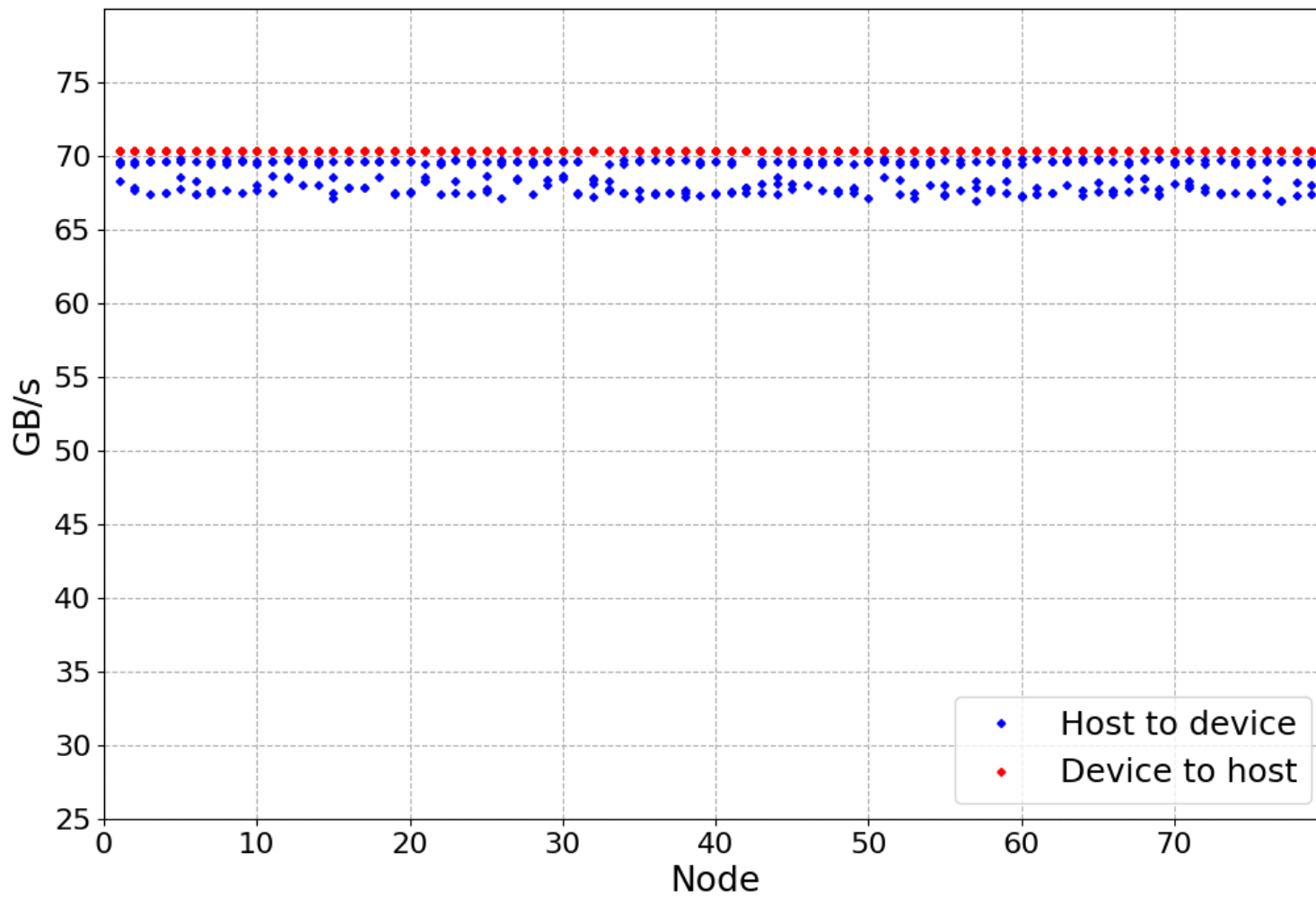
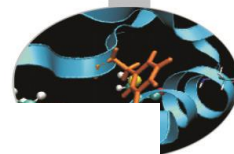


- Sanity threshold 750 Gb/s (no **slow GPUs found**)

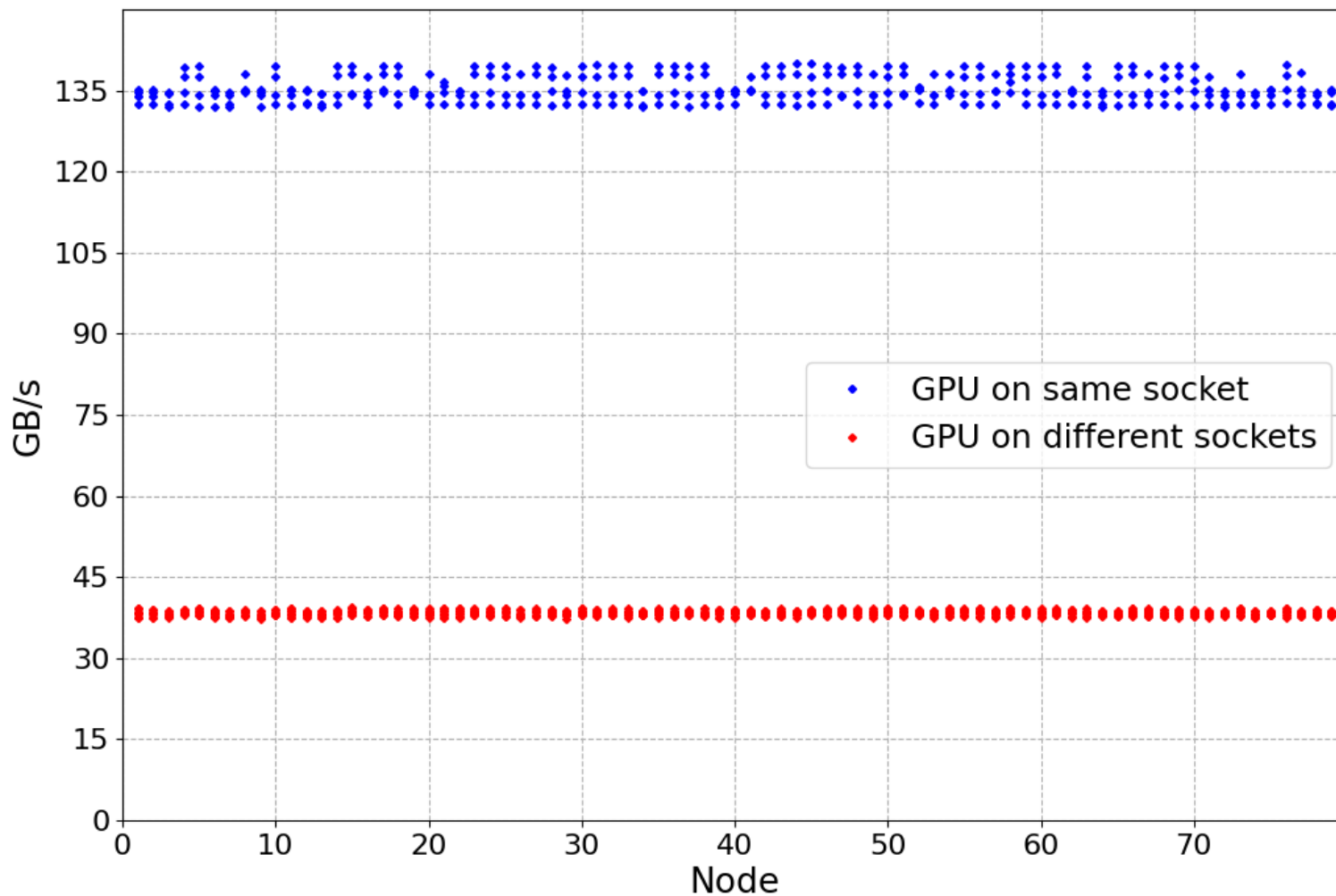
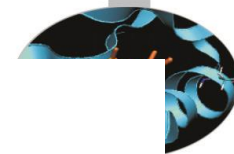




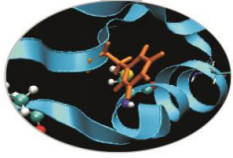
# Nvlink-GPU



# P2P-GPU

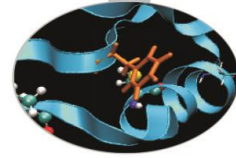


# MARCONI100 – April 2021

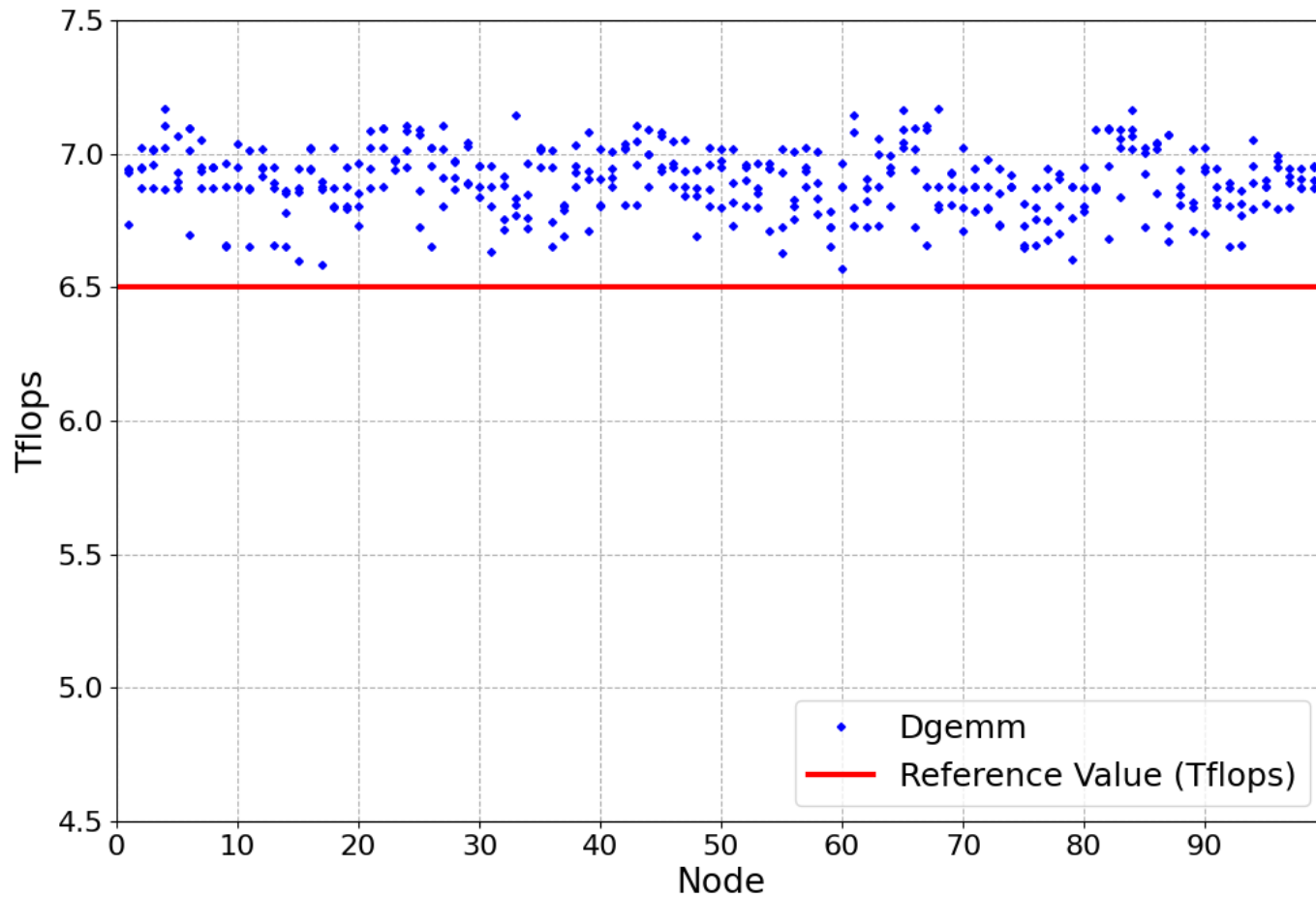


- Sanity checks were performed during production on April 12<sup>th</sup>
- Tests: dgemm, stream-GPU, nvlink and p2p on each single node of M100
- Results from the nodes of EURO Fusion partition are shown
- NOTE: this was made after the rack increase, so the results for 99 nodes are shown

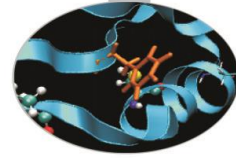
# Dgemm



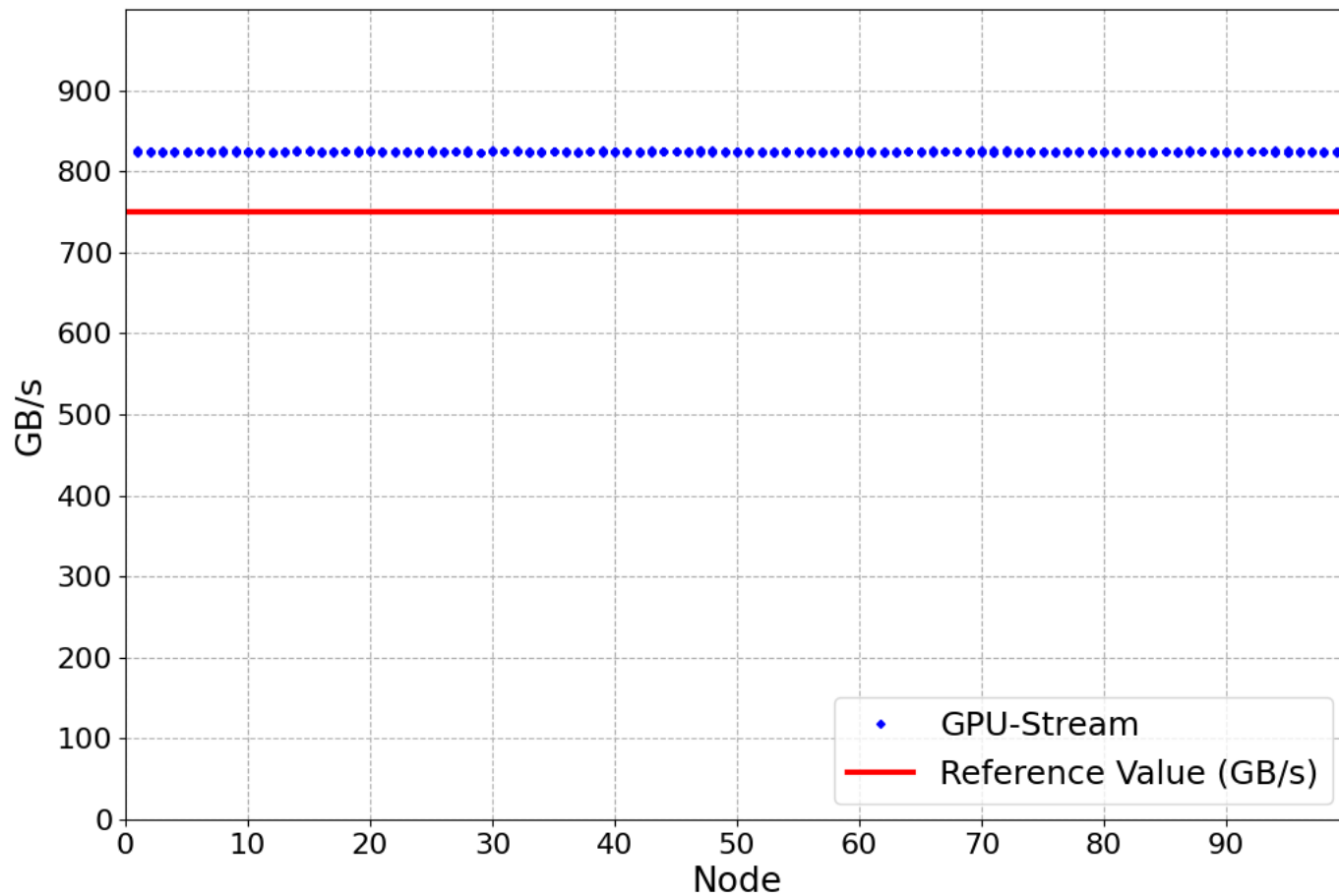
- Sanity threshold: 6.5 Tflops (two slow GPUs found)



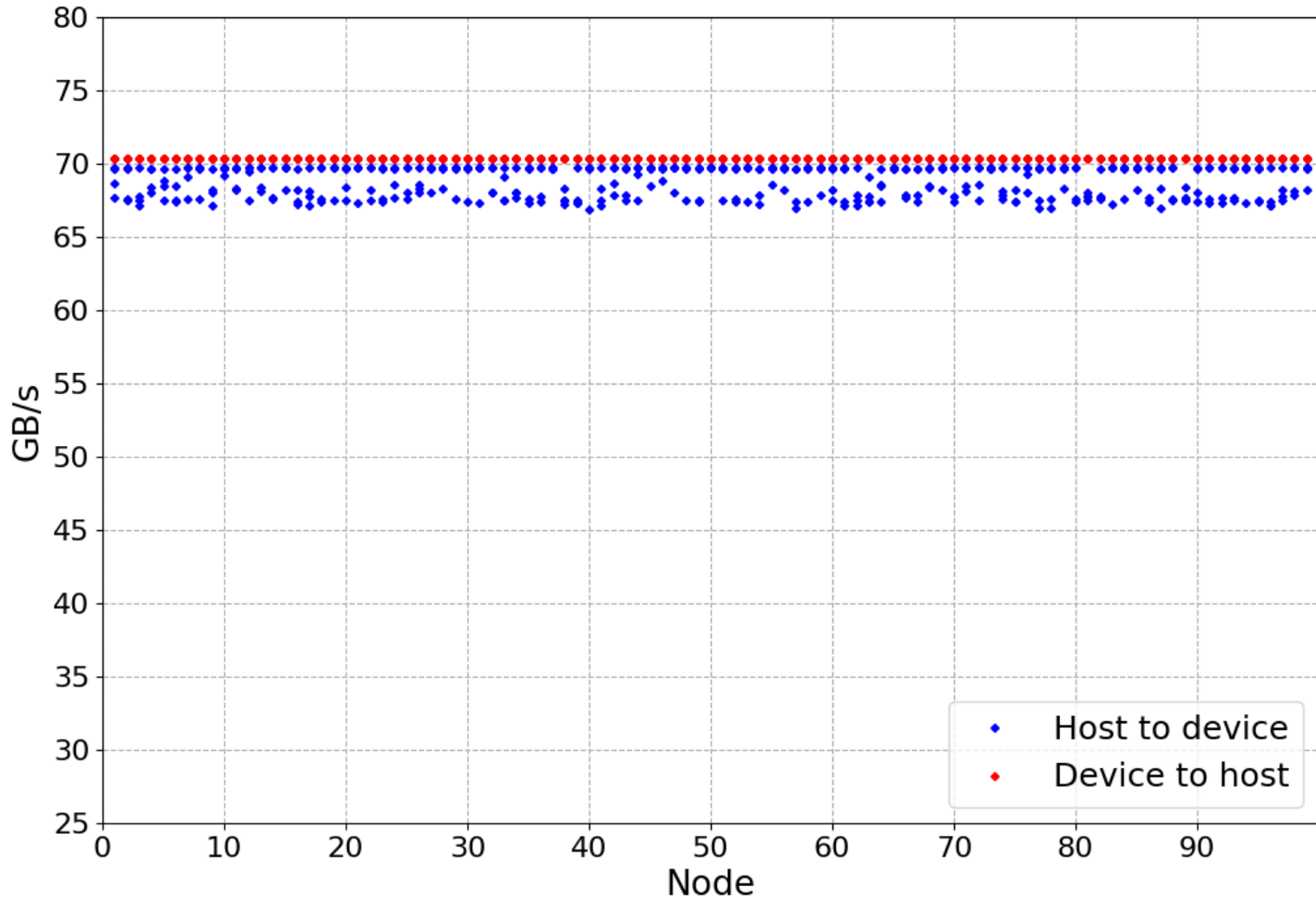
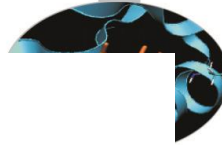
# Stream-GPU



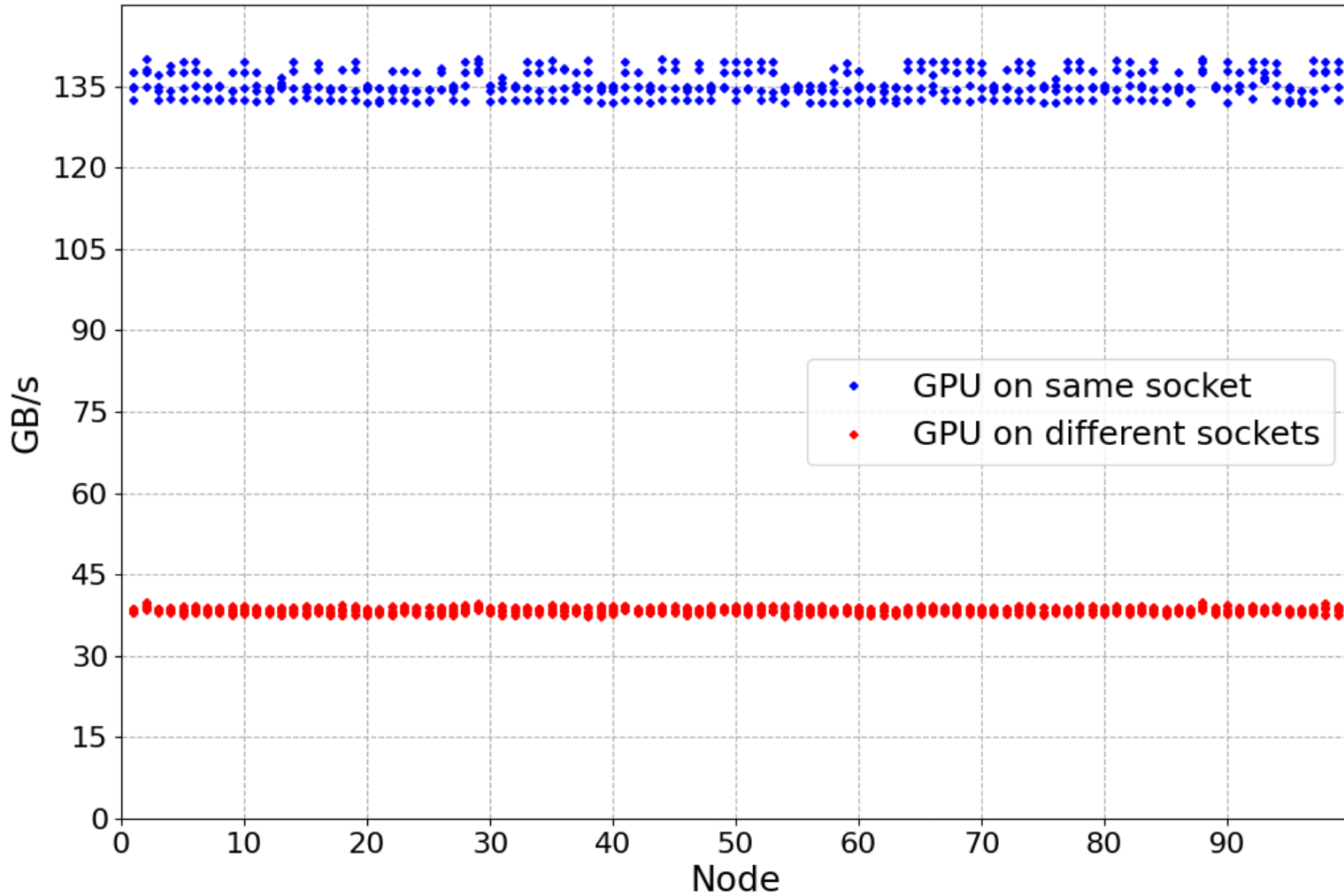
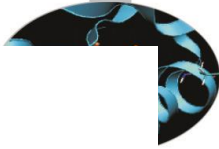
- Sanity threshold 750 Gb/s (no **slow GPUs found**)



# Nvlink-GPU



# P2P-GPU



## FOR OPERATION COMMITTEE:

- No results on Sanity Checks to send
- Next maintenance schedule:  
April 27<sup>th</sup> for M100  
May 11<sup>th</sup> for MARCONI