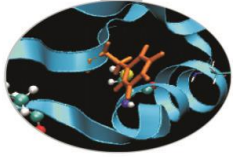


Outline

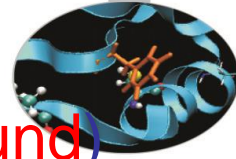
- MARCONI: Sanity checks launched during maintenance on May (linpack, stream, multi-node linpack)
- MARCONI100: Sanity checks on GPU (dgemm, stream, nvlLink, p2p) during Maintenance on April and production on May

MARCONI – May 2021

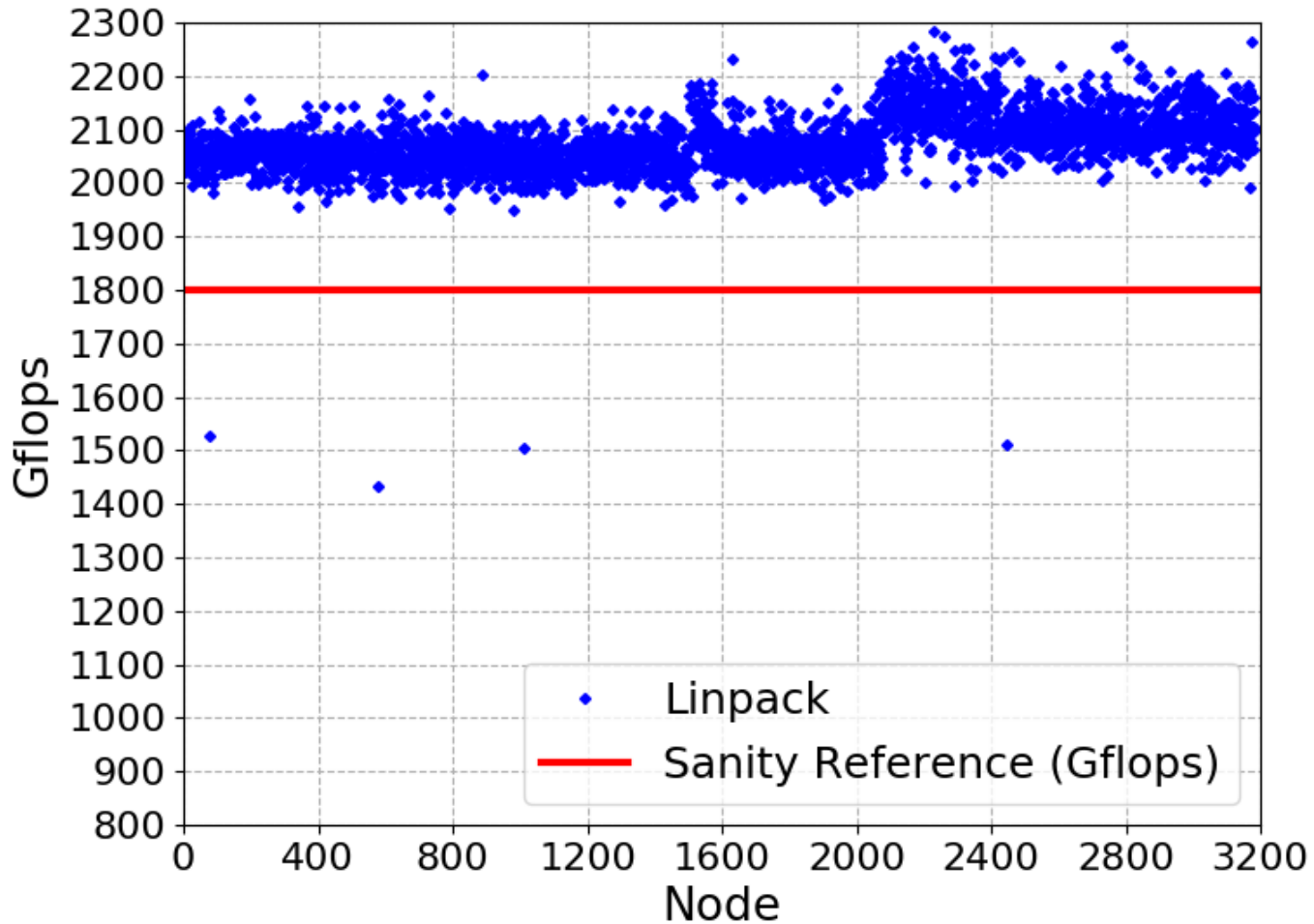


- Tests were performed during maintenance on May 18th
- Tests: linpack and stream on each single node of SKL
- Switch-level Linpack tests were performed
- Slow nodes have been removed from production for investigation and fixes

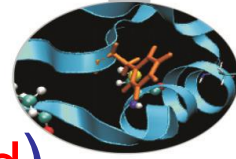
Linpack SKL



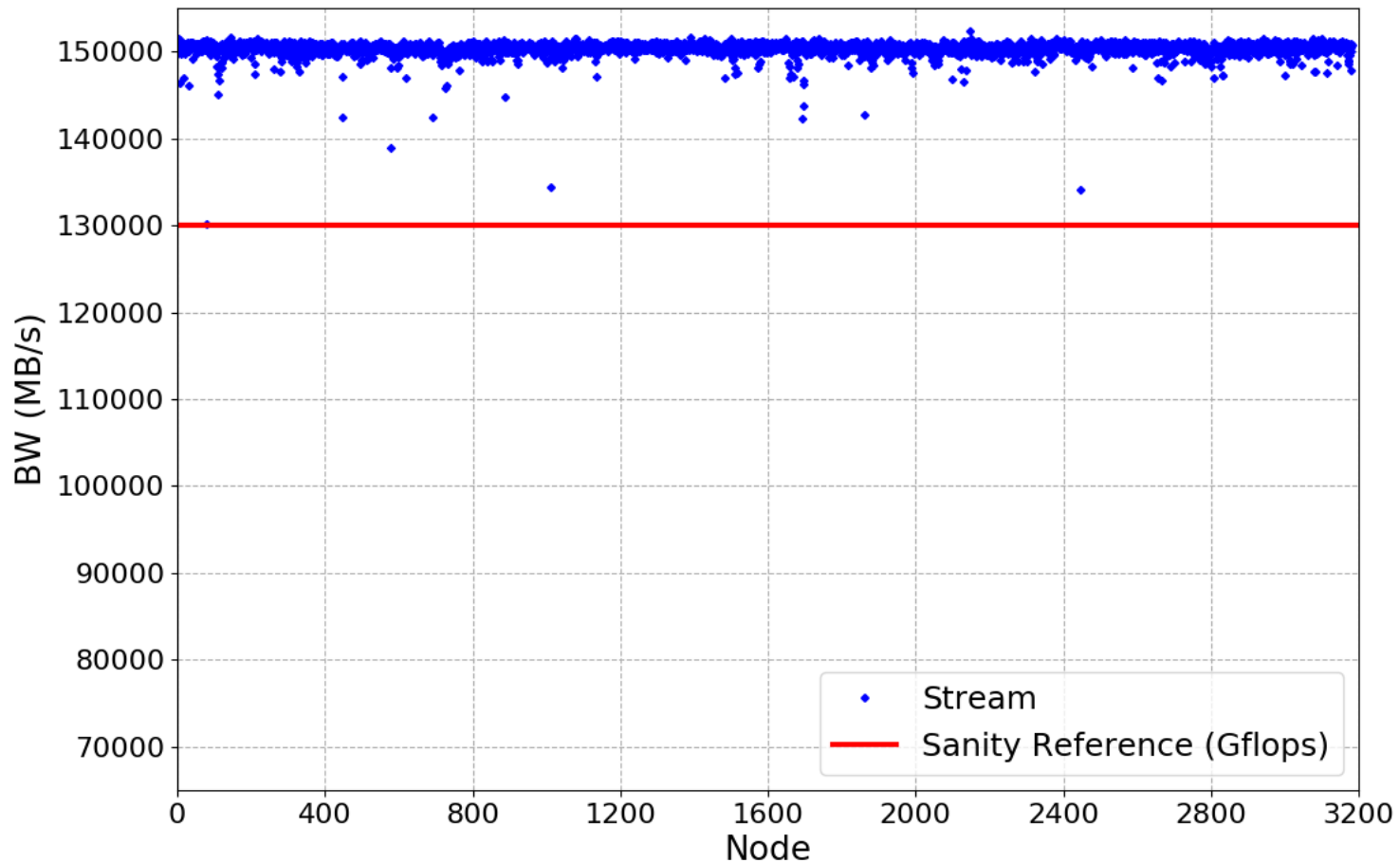
- Sanity threshold: 1800 Gflops (four slow nodes found)

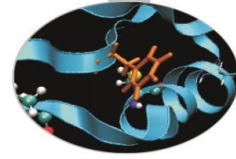


Stream SKL



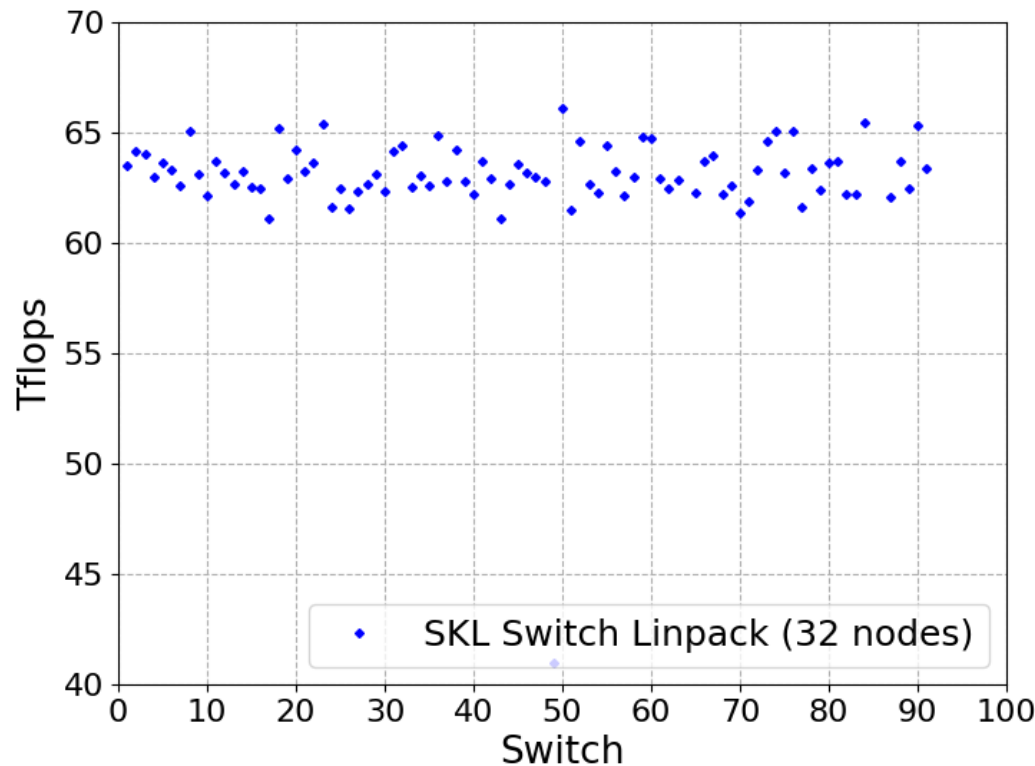
- Sanity threshold: 130000 MB/s (no slow nodes found)



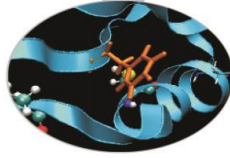


Switch-level Linpack SKL

- 91 switches tested
- Overall stable performance, 4 switches with problems that returned to good performances after a reboot

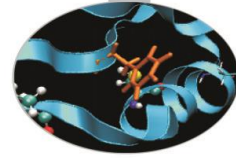


MARCONI100 – April 2021

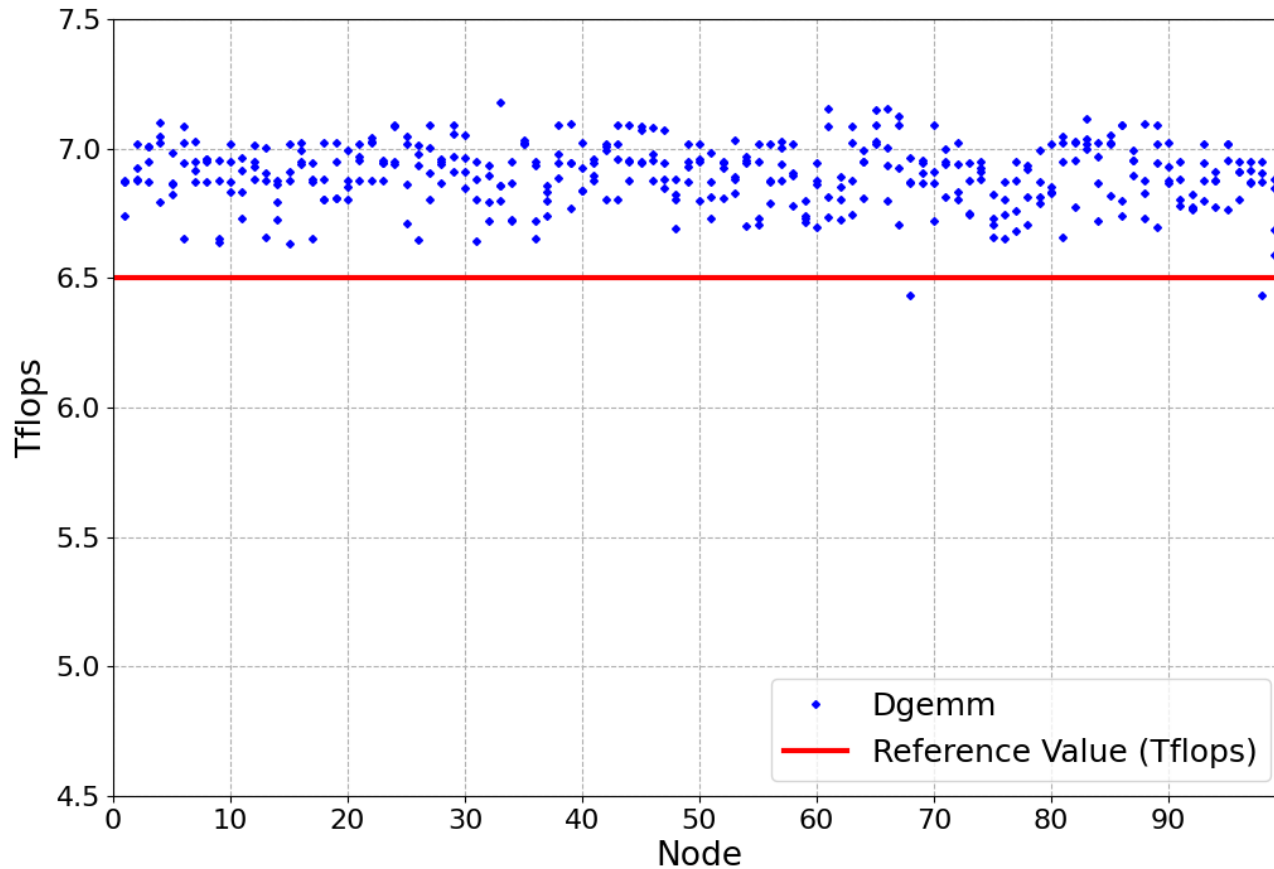


- Sanity checks were performed during maintenance on April 27th
- Tests: dgemm, stream-GPU, nvlink and p2p on each single node of M100
- Results from the nodes of EUROFusion partition are shown

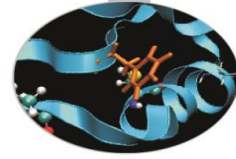
Dgemmm



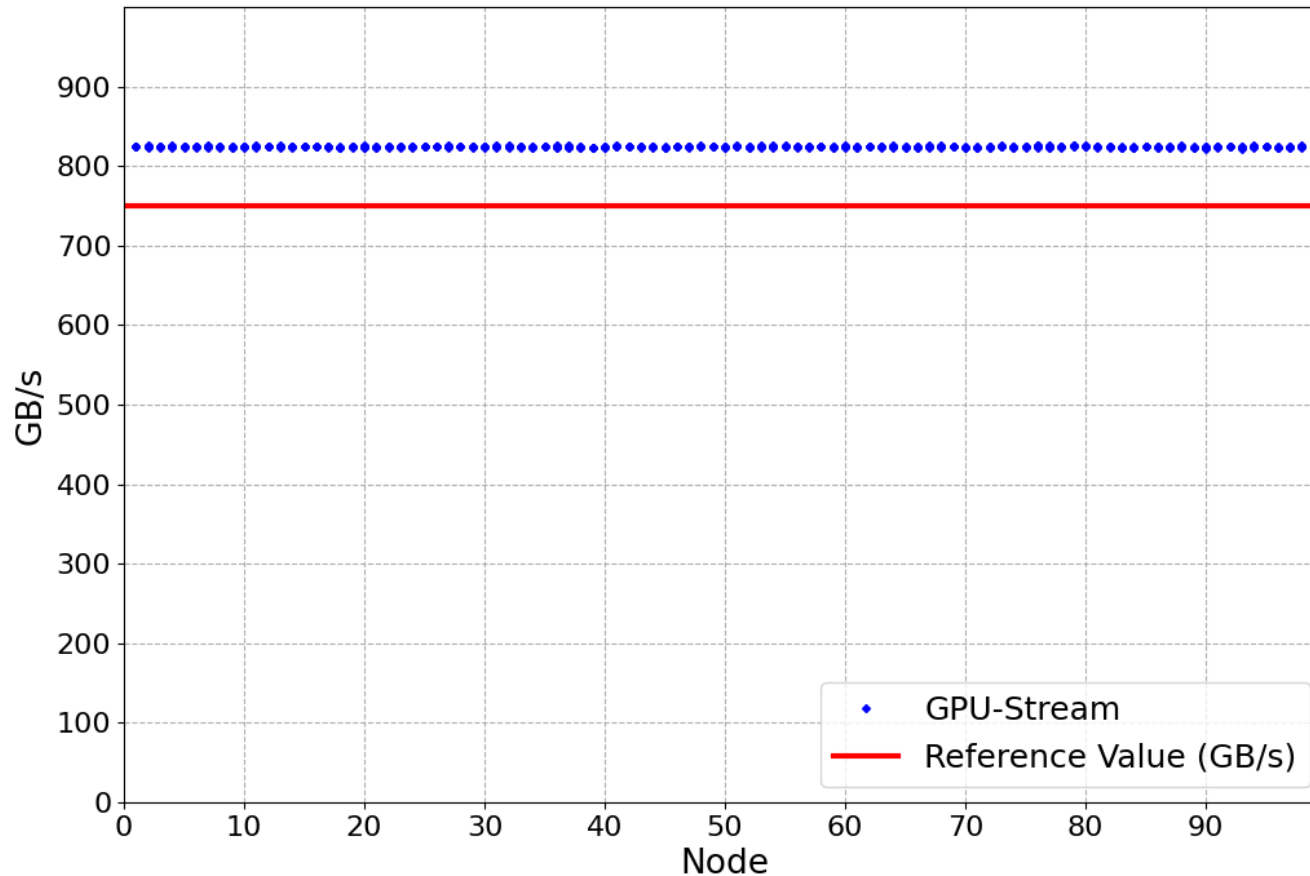
- Sanity threshold: 6.5 Tflops (two slow GPUs found)



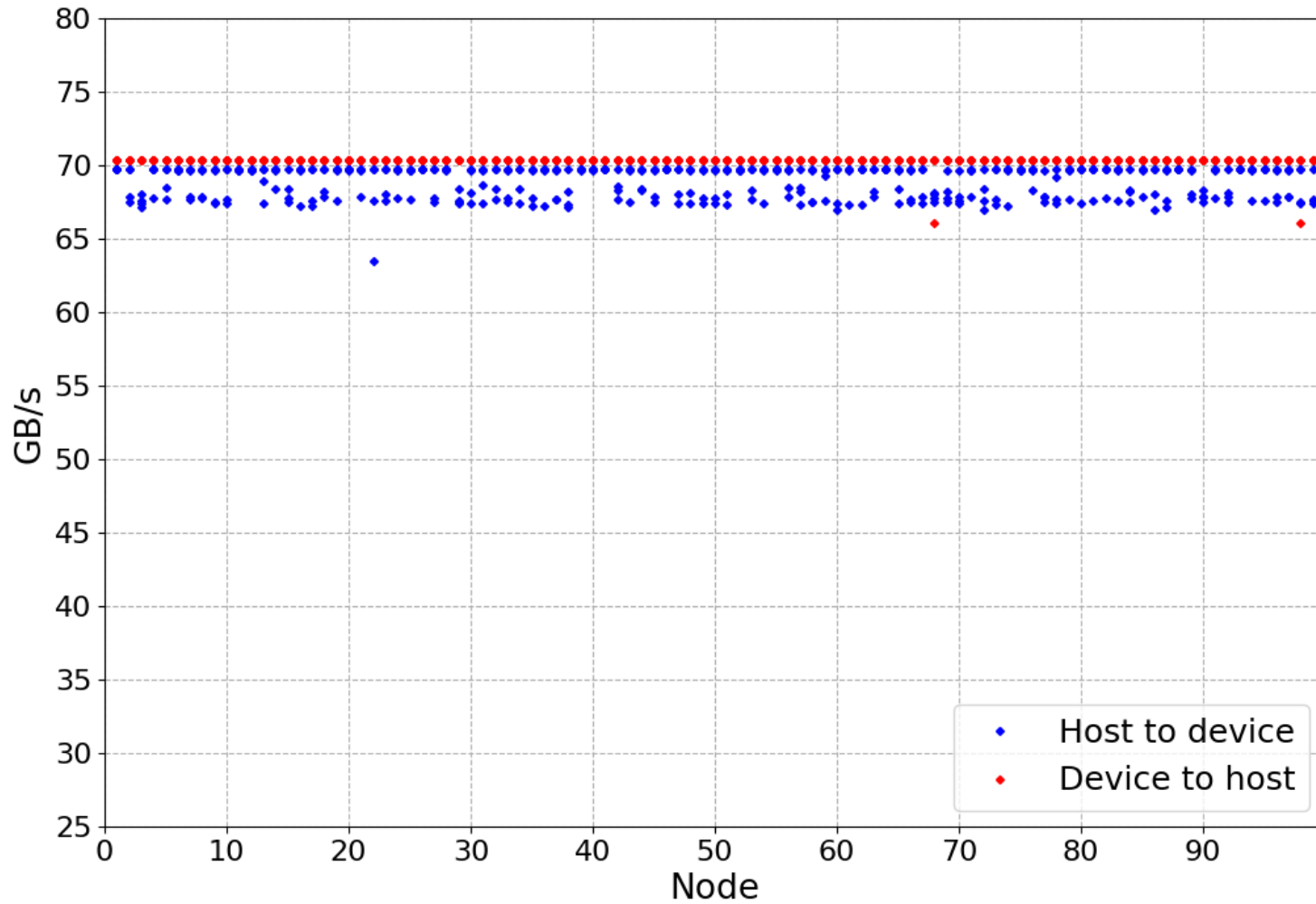
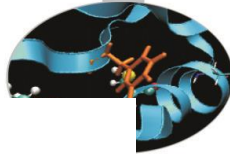
Stream-GPU



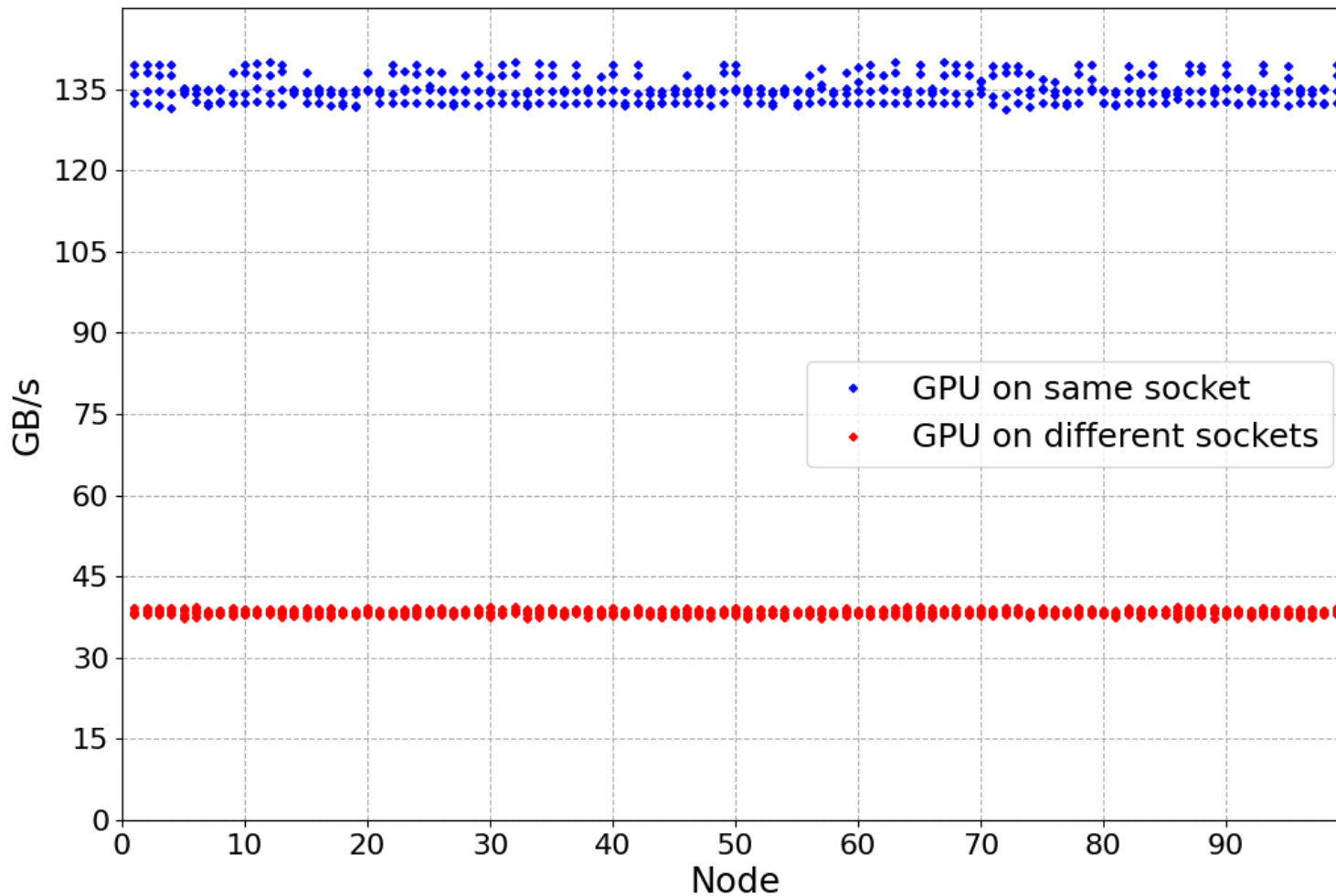
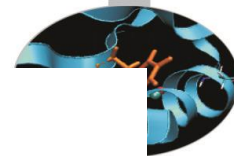
- Sanity threshold 750 Gb/s (no **slow GPUs found**)



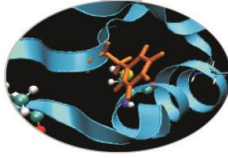
Nvlink-GPU



P2P-GPU

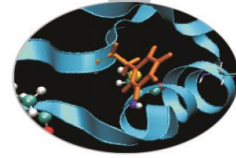


MARCONI100 – May 2021

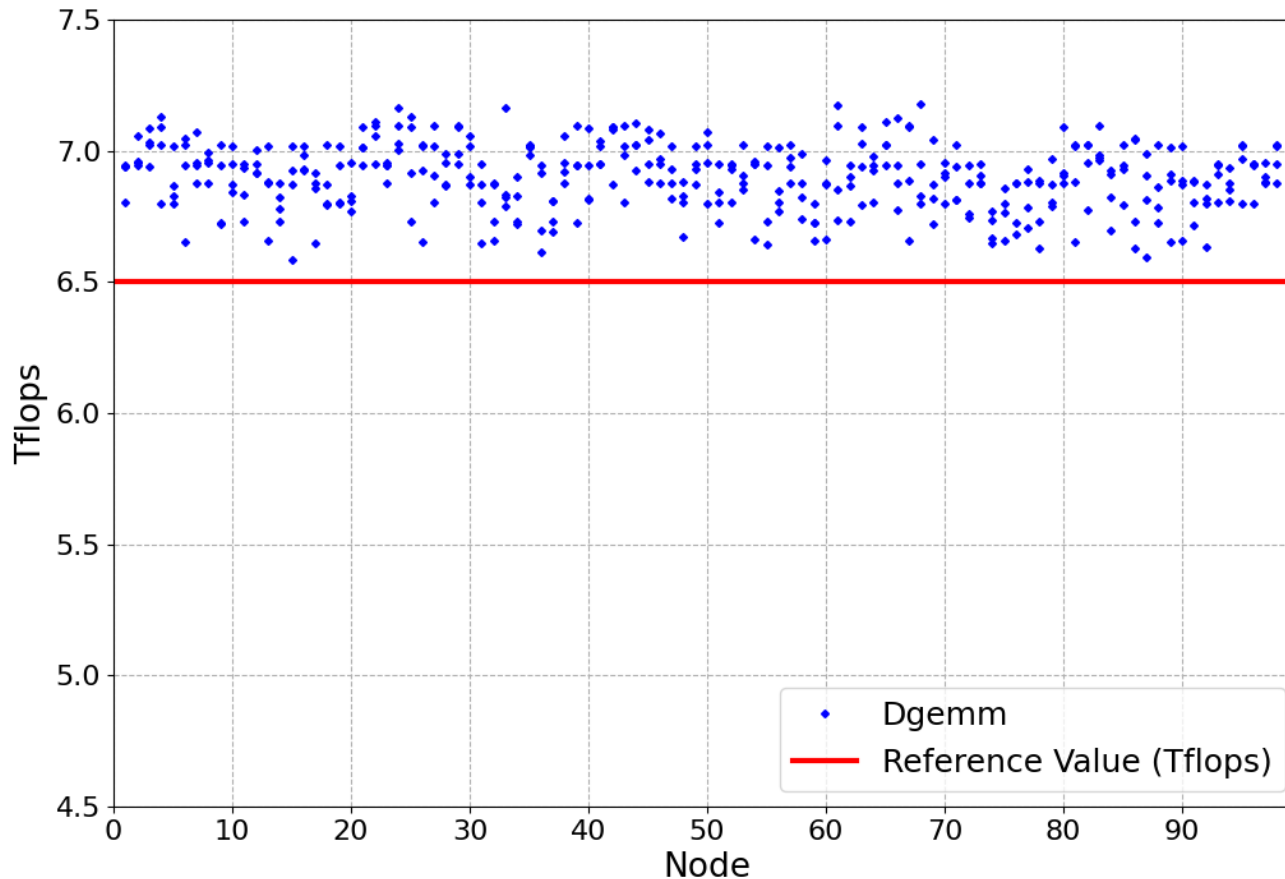


- Sanity checks were performed during production on May 14th
- Tests: dgemm, stream-GPU, nvlink and p2p on each single node of M100
- Results from the nodes of EUROFusion partition are shown

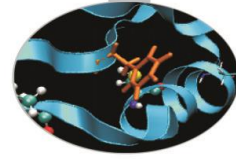
Dgemmm



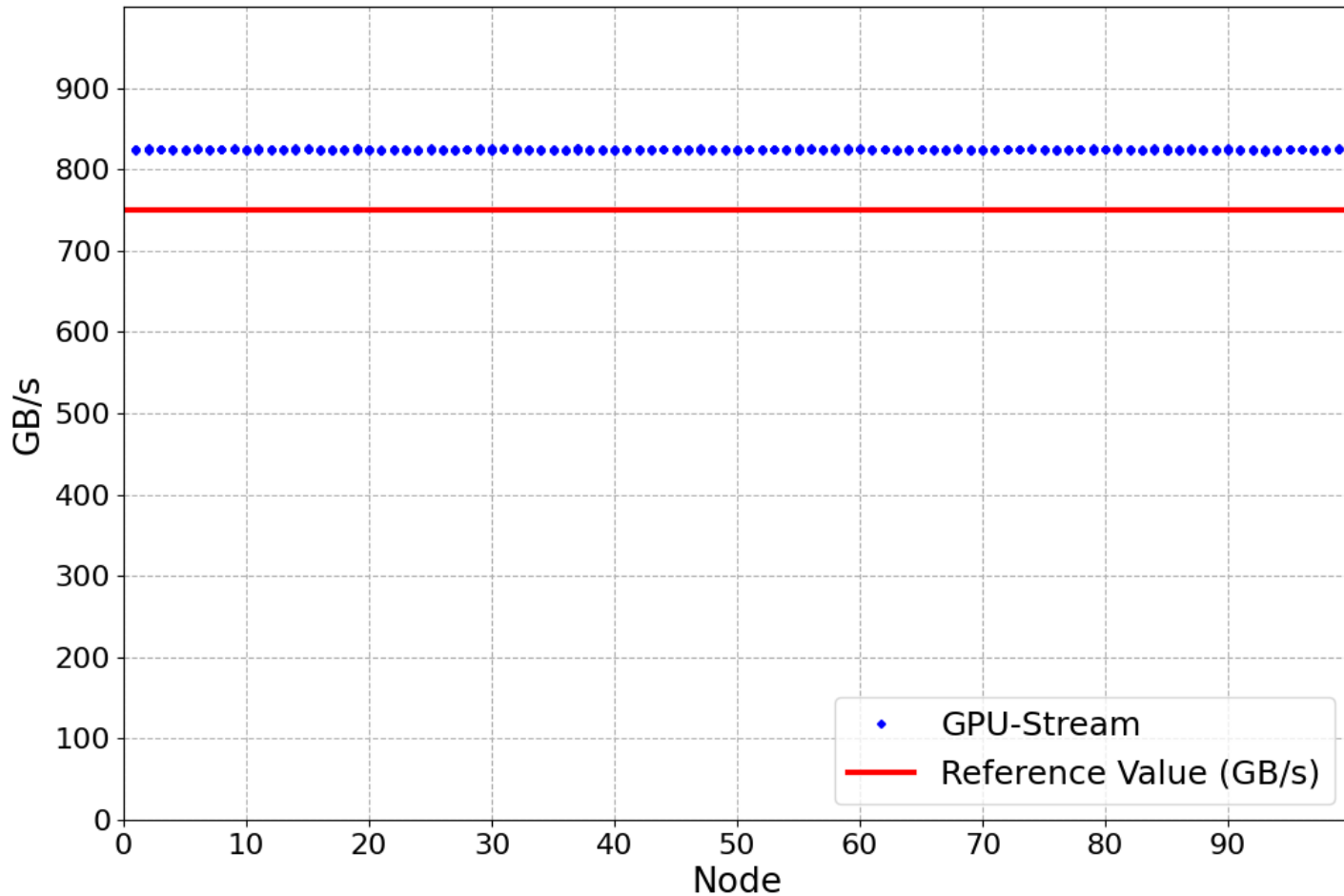
- Sanity threshold: 6.5 Tflops (two slow GPUs found)



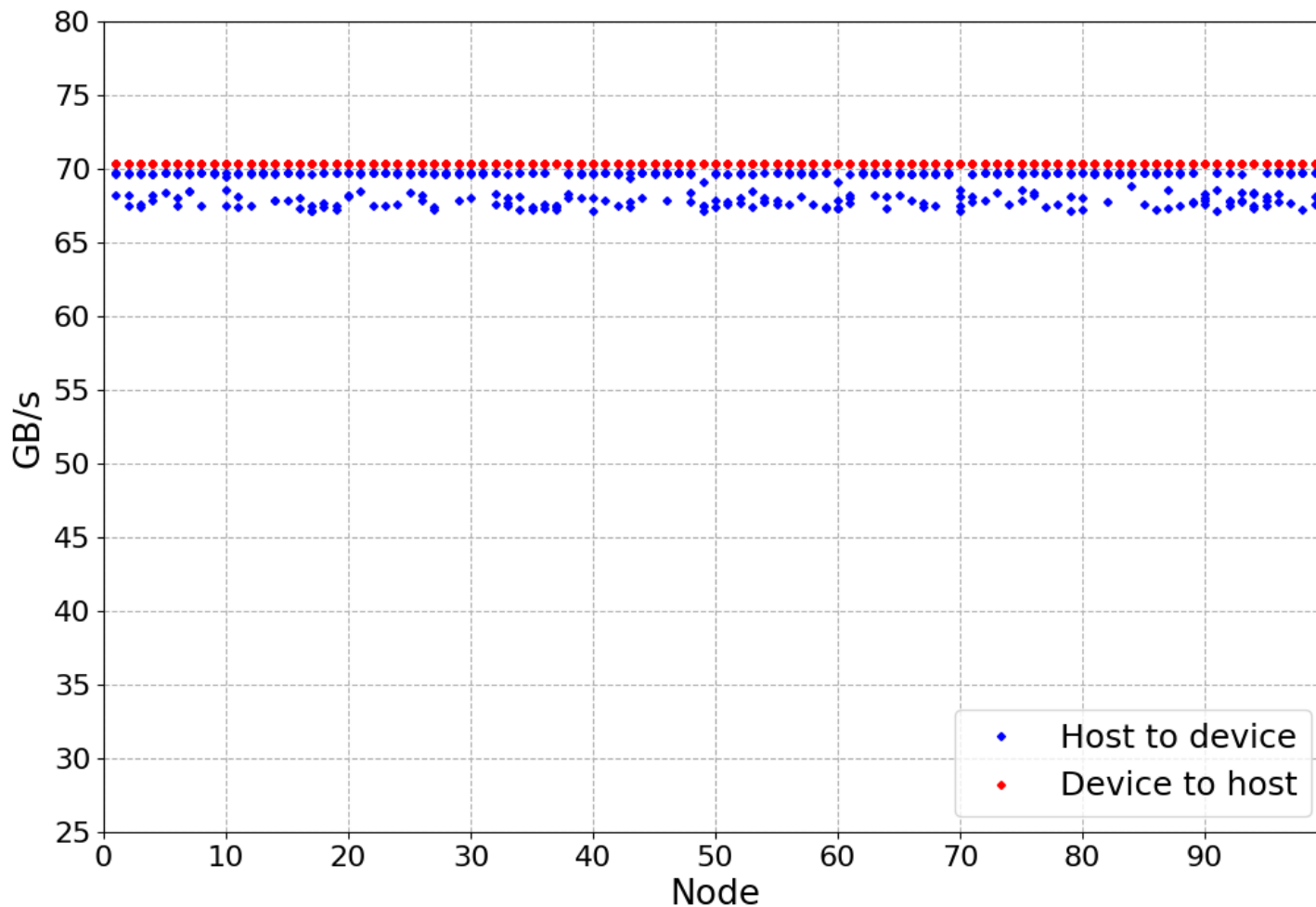
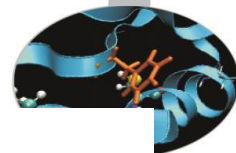
Stream-GPU



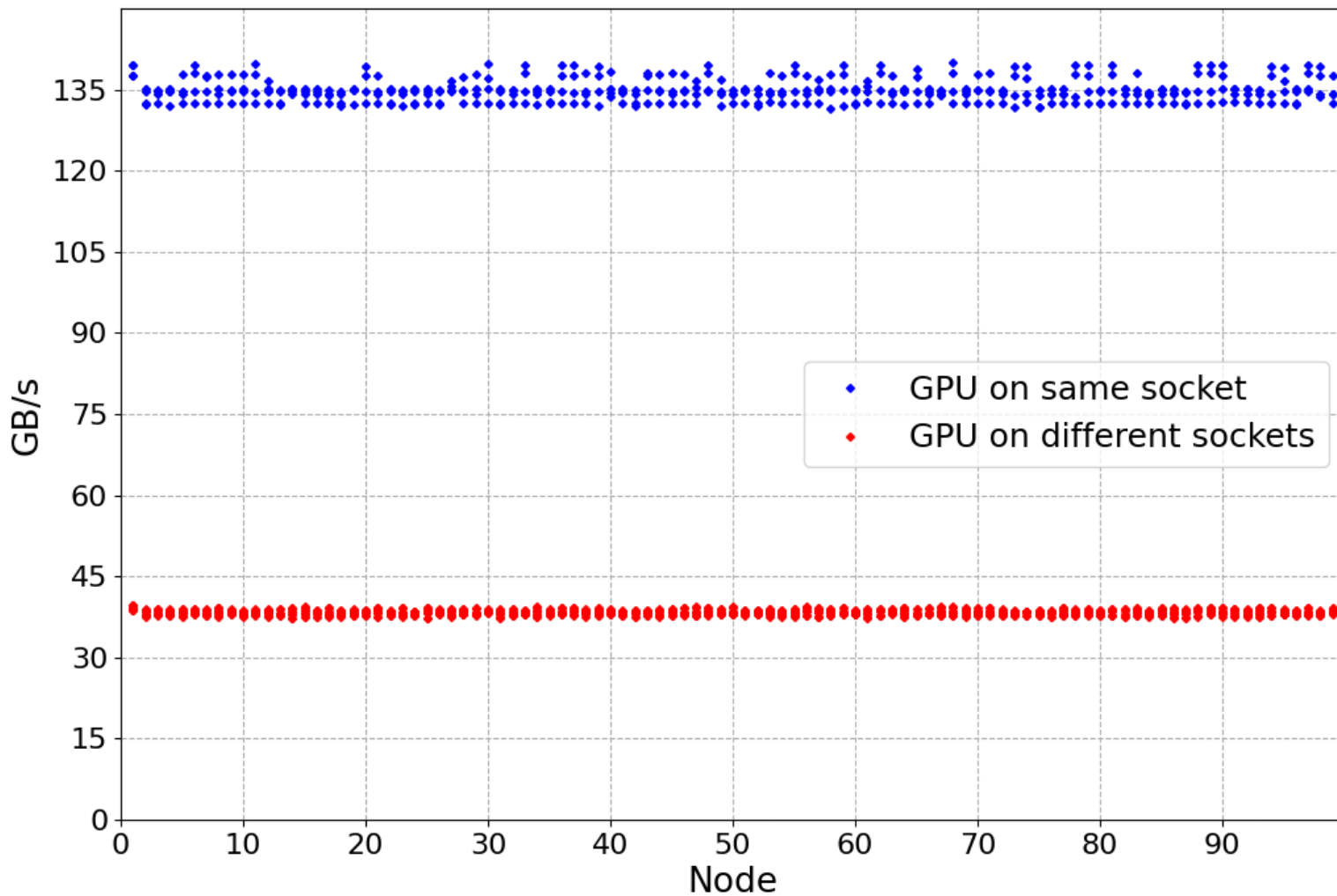
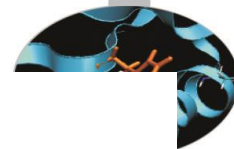
- Sanity threshold 750 Gb/s (no **slow GPUs found**)



Nvlink-GPU



P2P-GPU



FOR OPERATION COMMITTEE:

- No results on Sanity Checks to send
- Next maintenance schedule:
May 25th for M100
June 8th for MARCONI