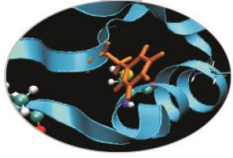


Outline

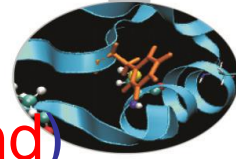
- MARCONI: Sanity checks launched during production on July (linpack, stream, multi-node linpack)
- MARCONI100: Sanity checks on GPU (dgemm, stream, nvlank, p2p) during Maintenance on June and production on July

MARCONI – July 2021

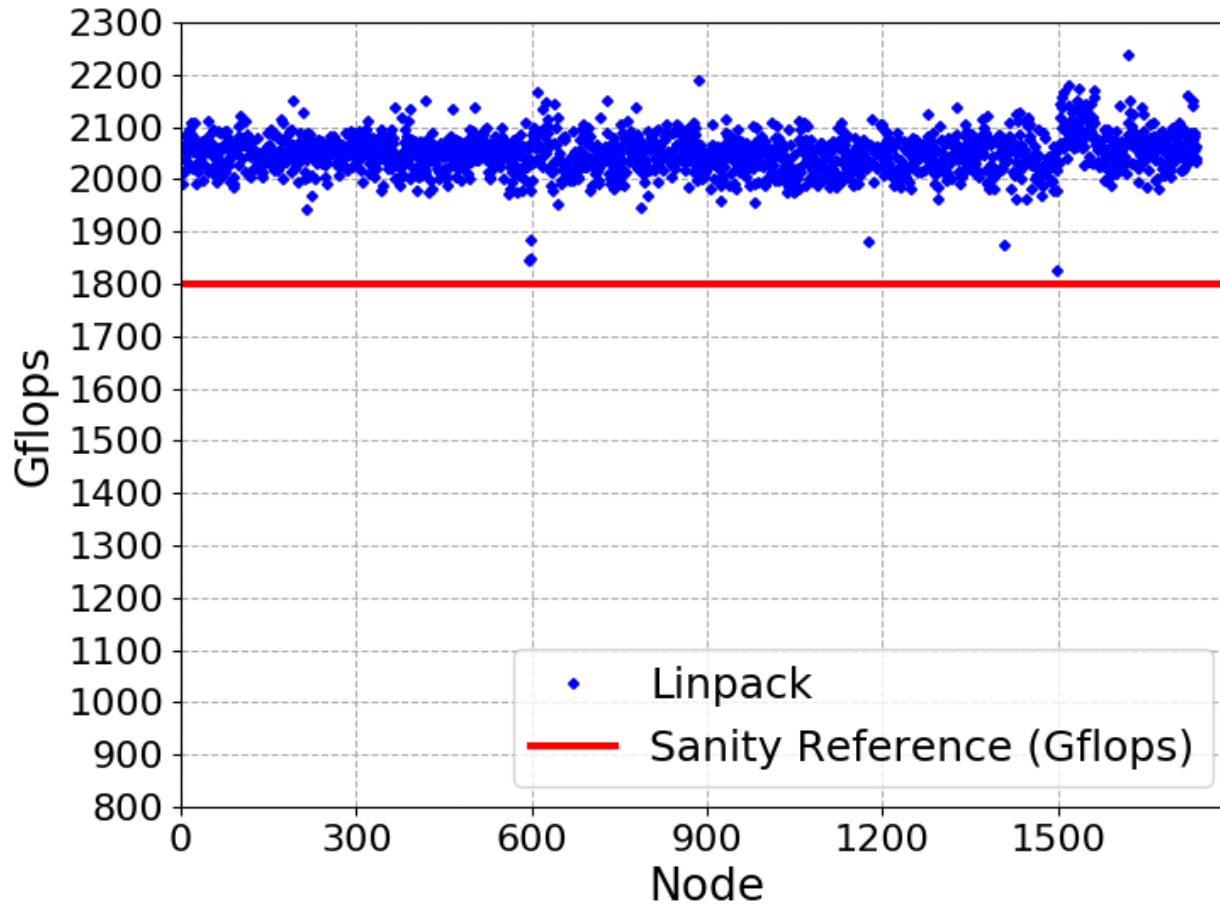


- Tests were performed during production on July 9th, still ongoing
- Tests: linpack and stream on each single node of SKL
- No Switch-level Linpack tests during production runs
- Only 1737 nodes completed the test before the ticket meeting
- Slow nodes have been removed from production for investigation and fixes

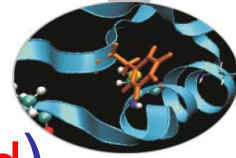
Linpack SKL



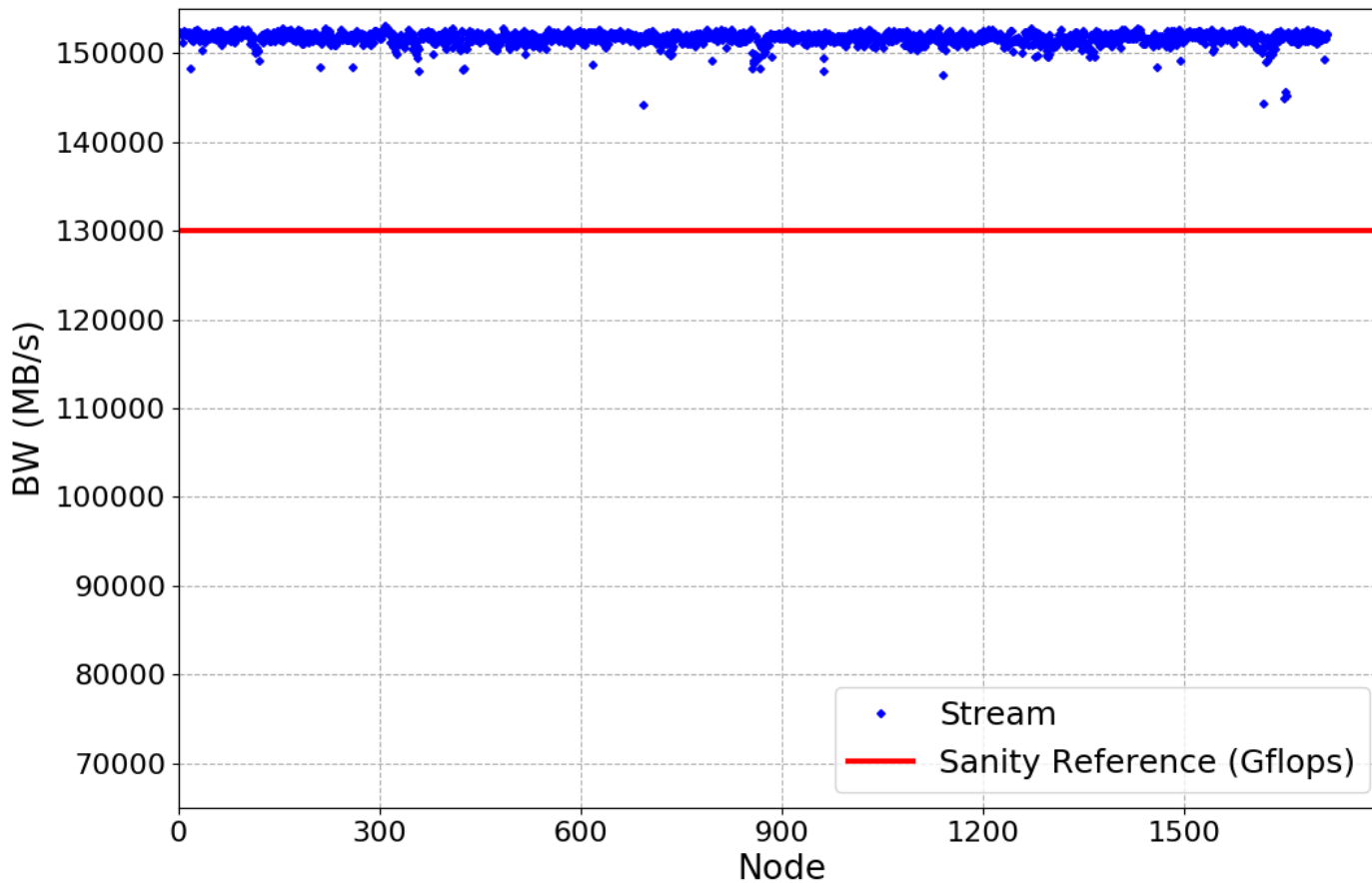
- Sanity threshold: 1800 Gflops (no slow nodes found)



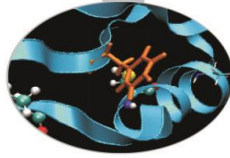
Stream SKL



- Sanity threshold: 130000 MB/s (no slow nodes found)

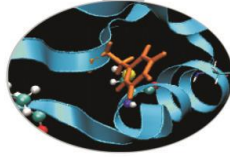


MARCONI100 – June 2021

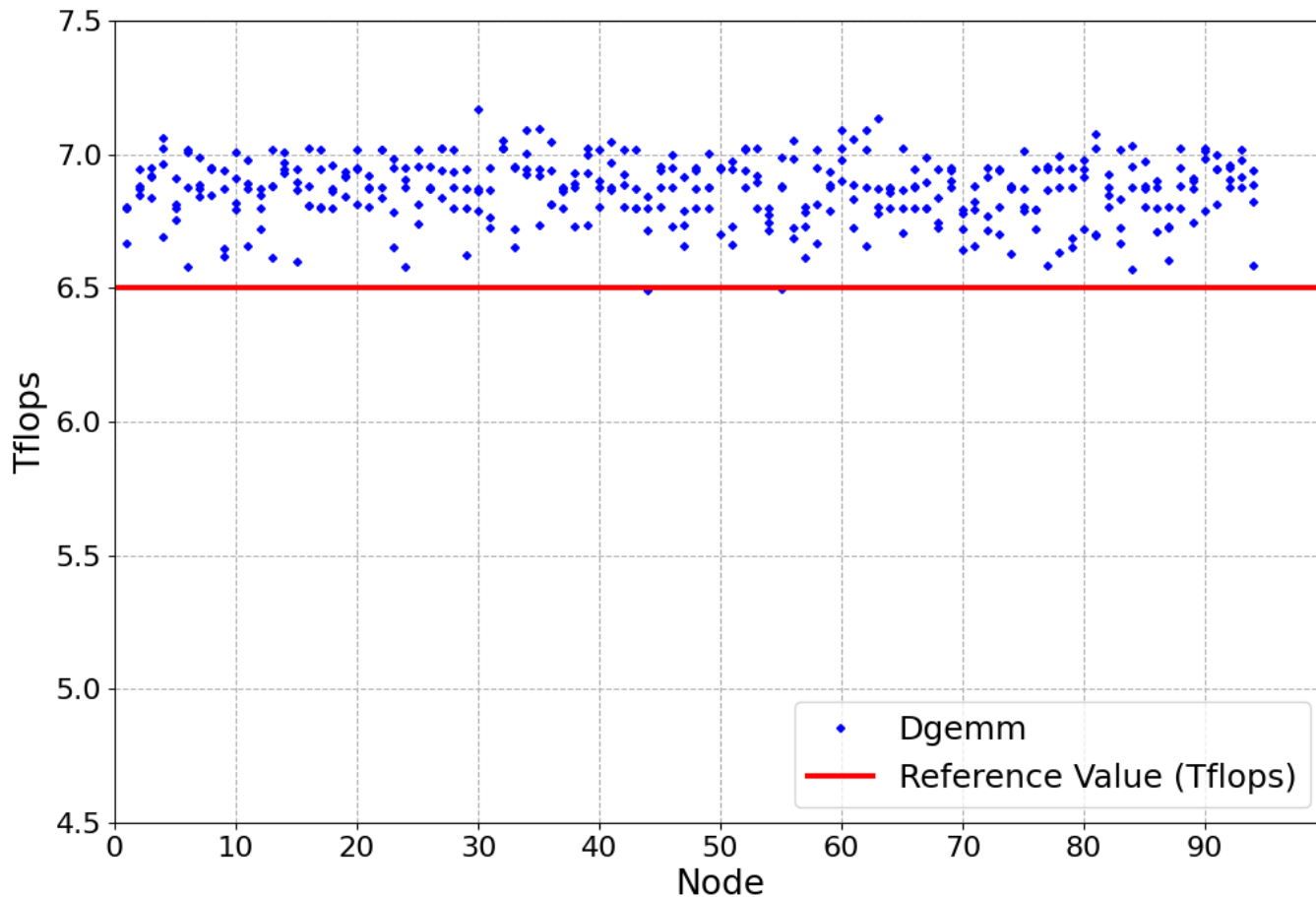


- Sanity checks were performed during maintenance on June 29th
- Tests: dgemm, stream-GPU, nvlink and p2p on each single node of M100
- Results from the nodes of EUROFusion partition are shown
- Pre-maintenance and post-maintenance checks were performed, as an accorded test

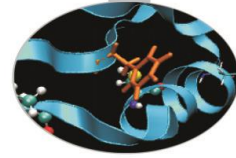
Dgemmm pre-maintenance



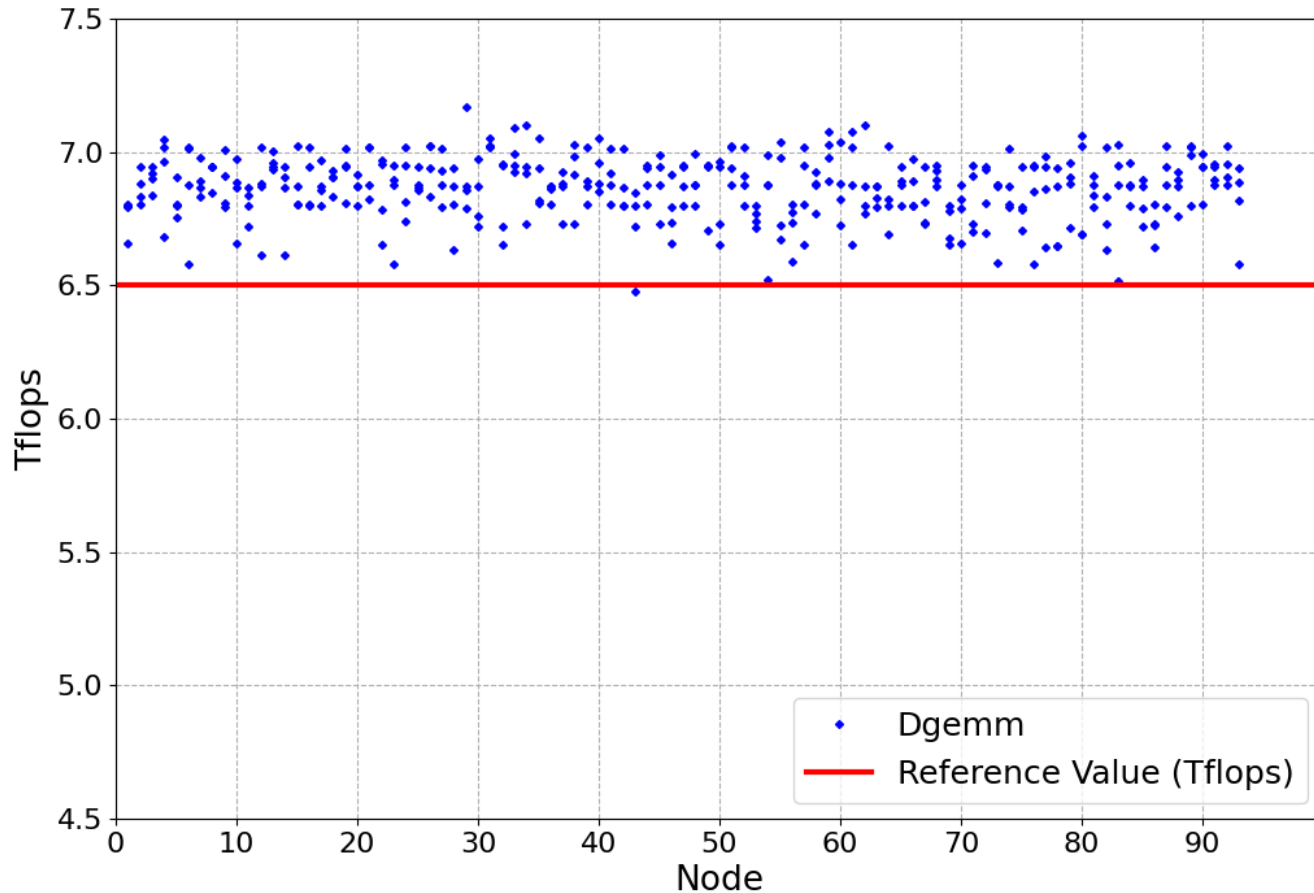
- Sanity threshold: 6.5 Tflops (two slow GPUs found)



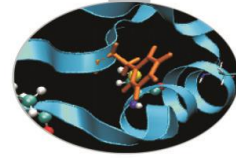
Dgemmm post-maintenance



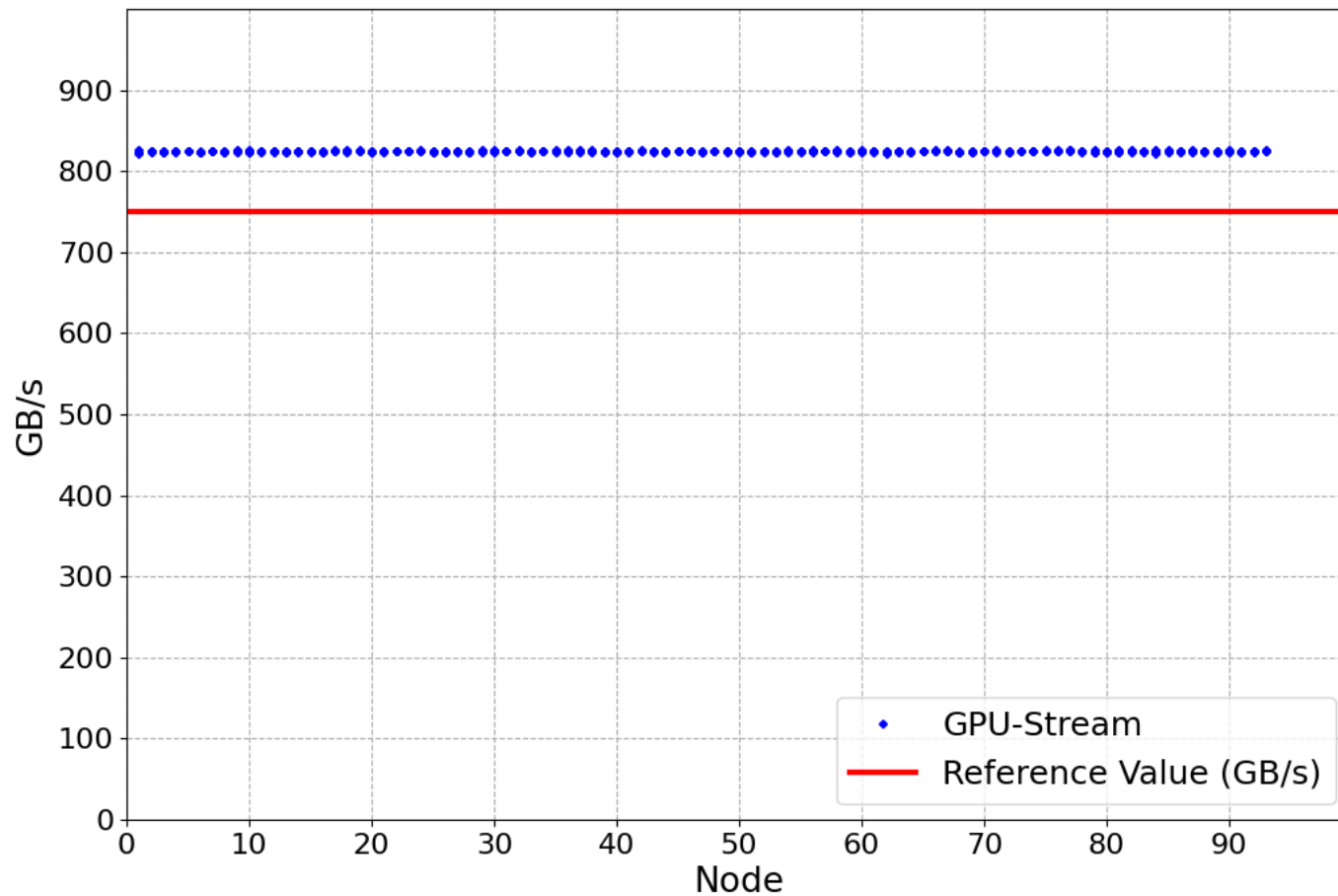
- Sanity threshold: 6.5 Tflops (one slow GPU found)



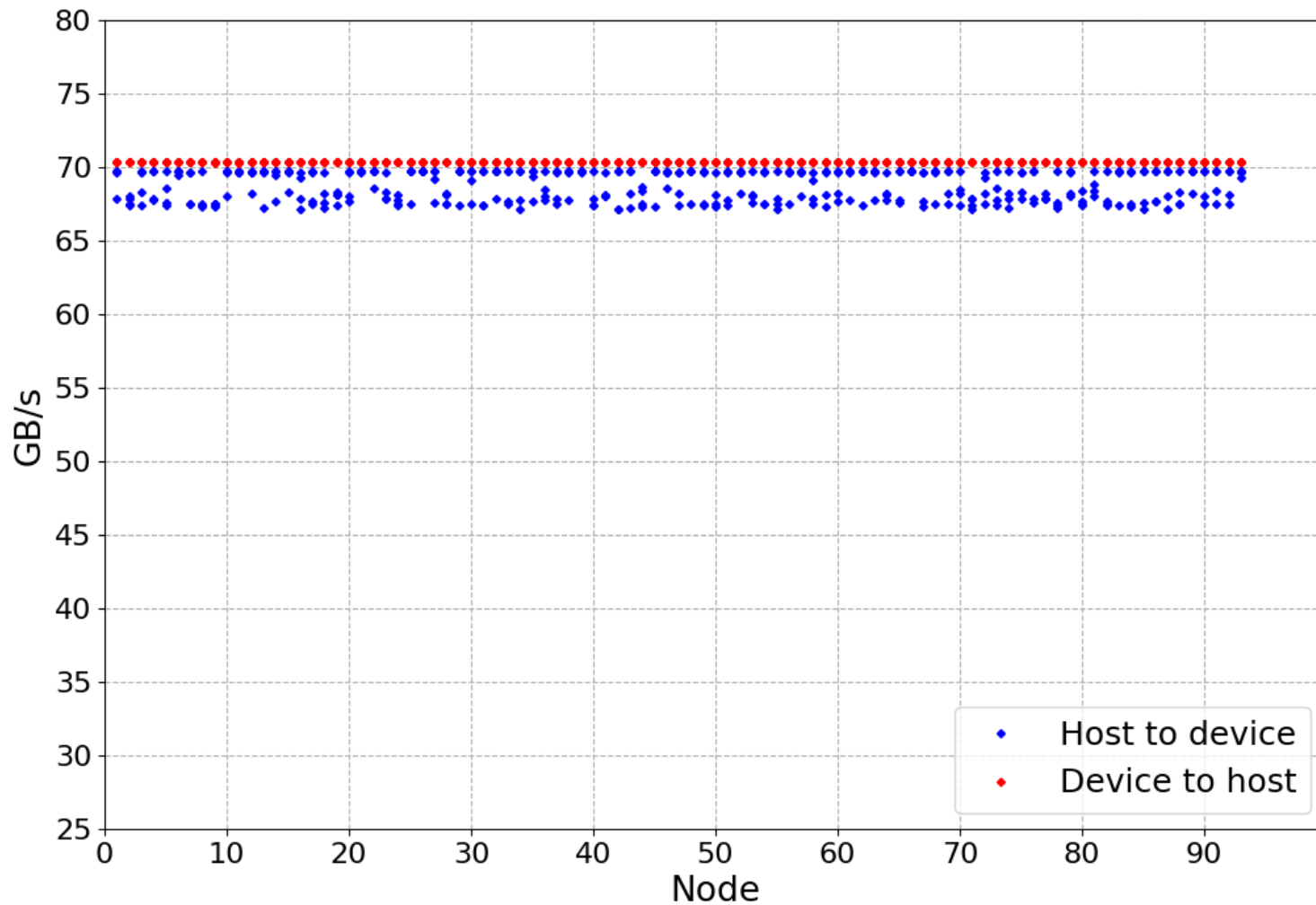
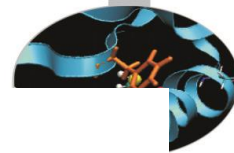
Stream-GPU



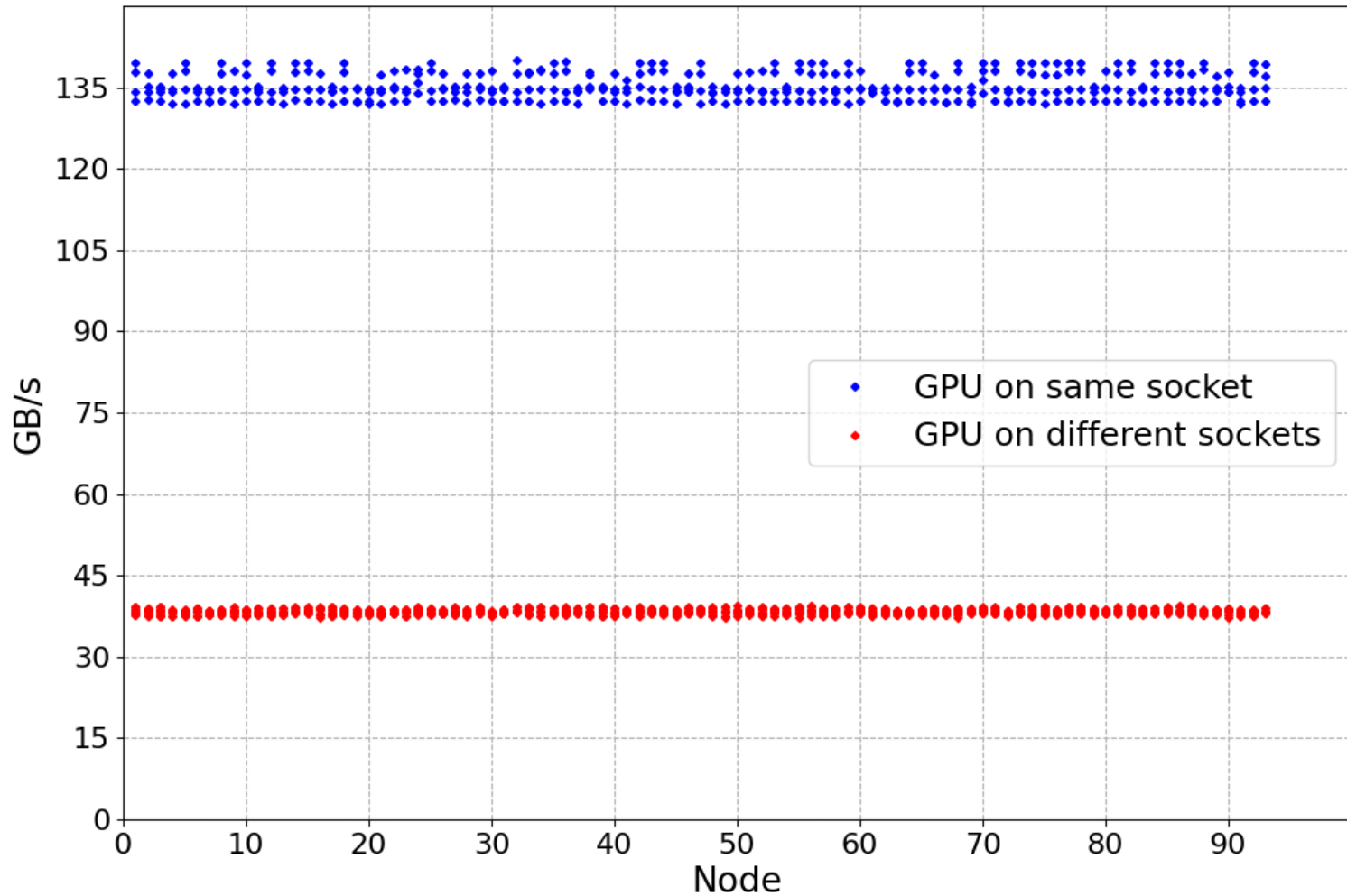
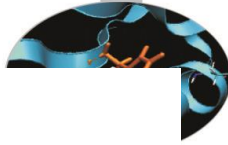
- Sanity threshold 750 Gb/s (no **slow GPUs found**)



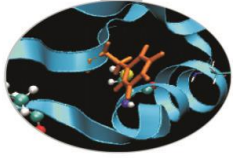
Nvlink-GPU



P2P-GPU

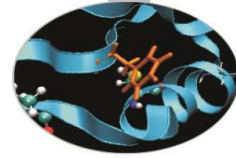


MARCONI100 – July 2021

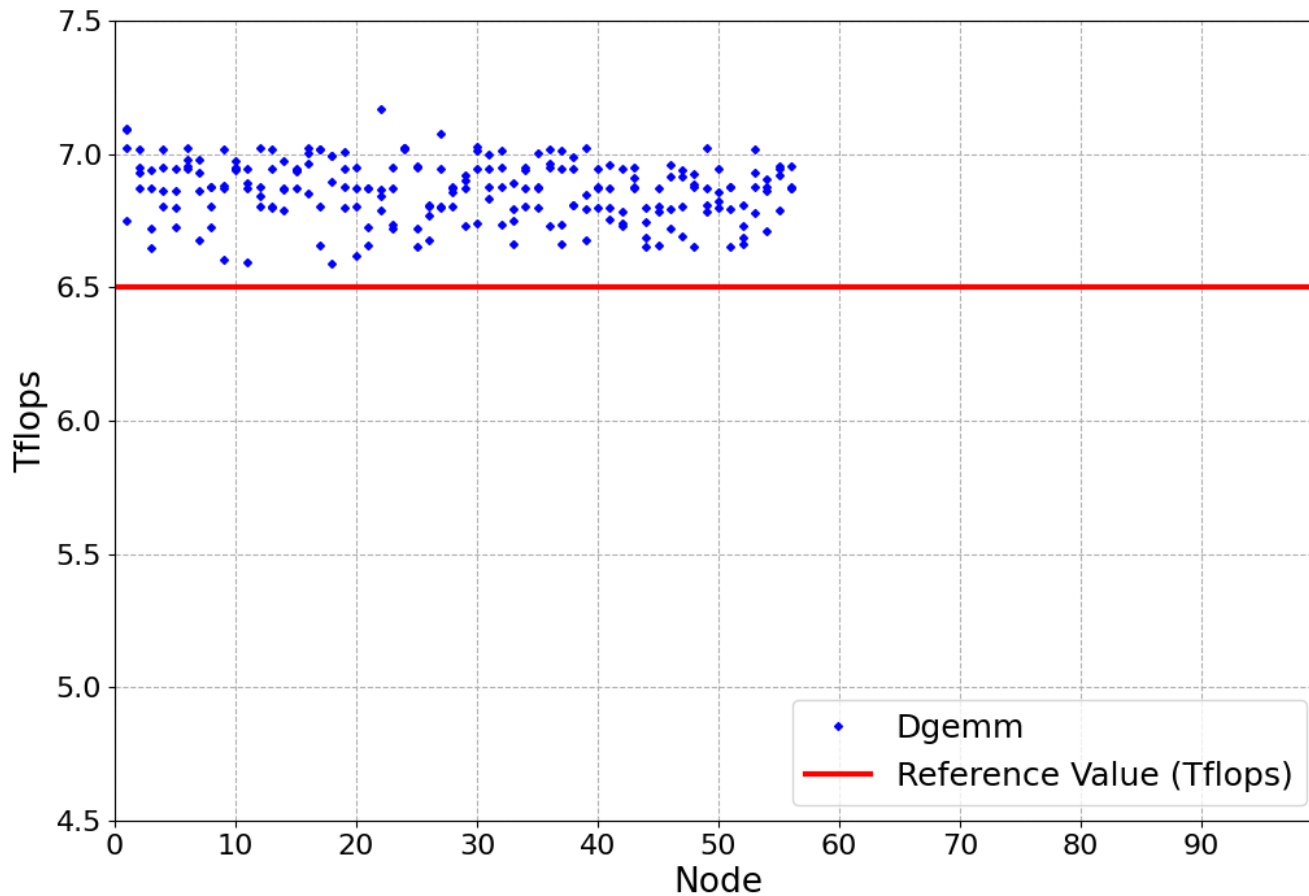


- Sanity checks were performed during production on June 14th (still ongoing)
- Tests: dgemm, stream-GPU, nvlink and p2p on each single node of M100
- Only 56 nodes shown so far
- Results from the nodes of EUROFusion partition are shown

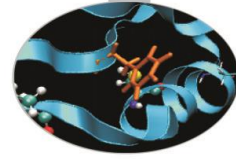
Dgemmm



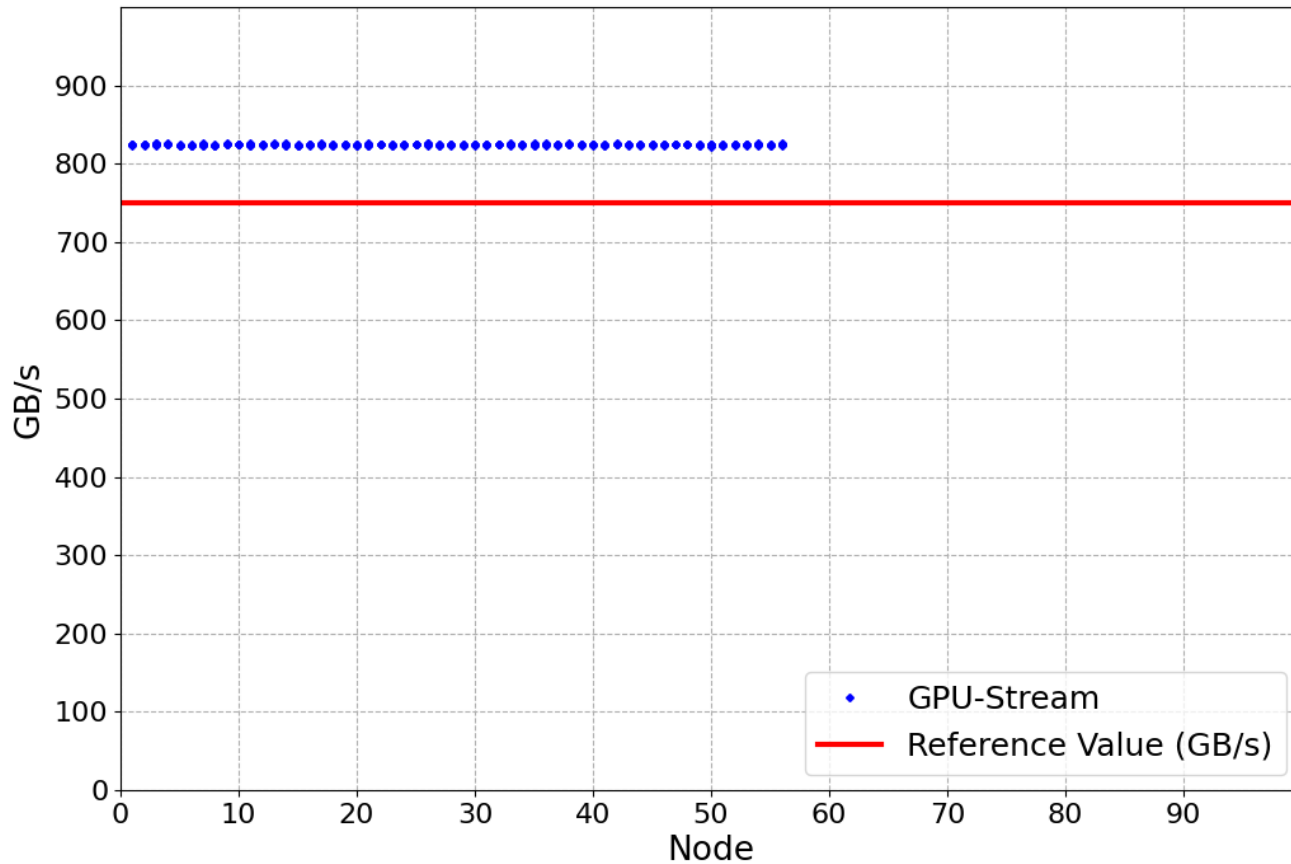
- Sanity threshold: 6.5 Tflops (no slow GPU found)



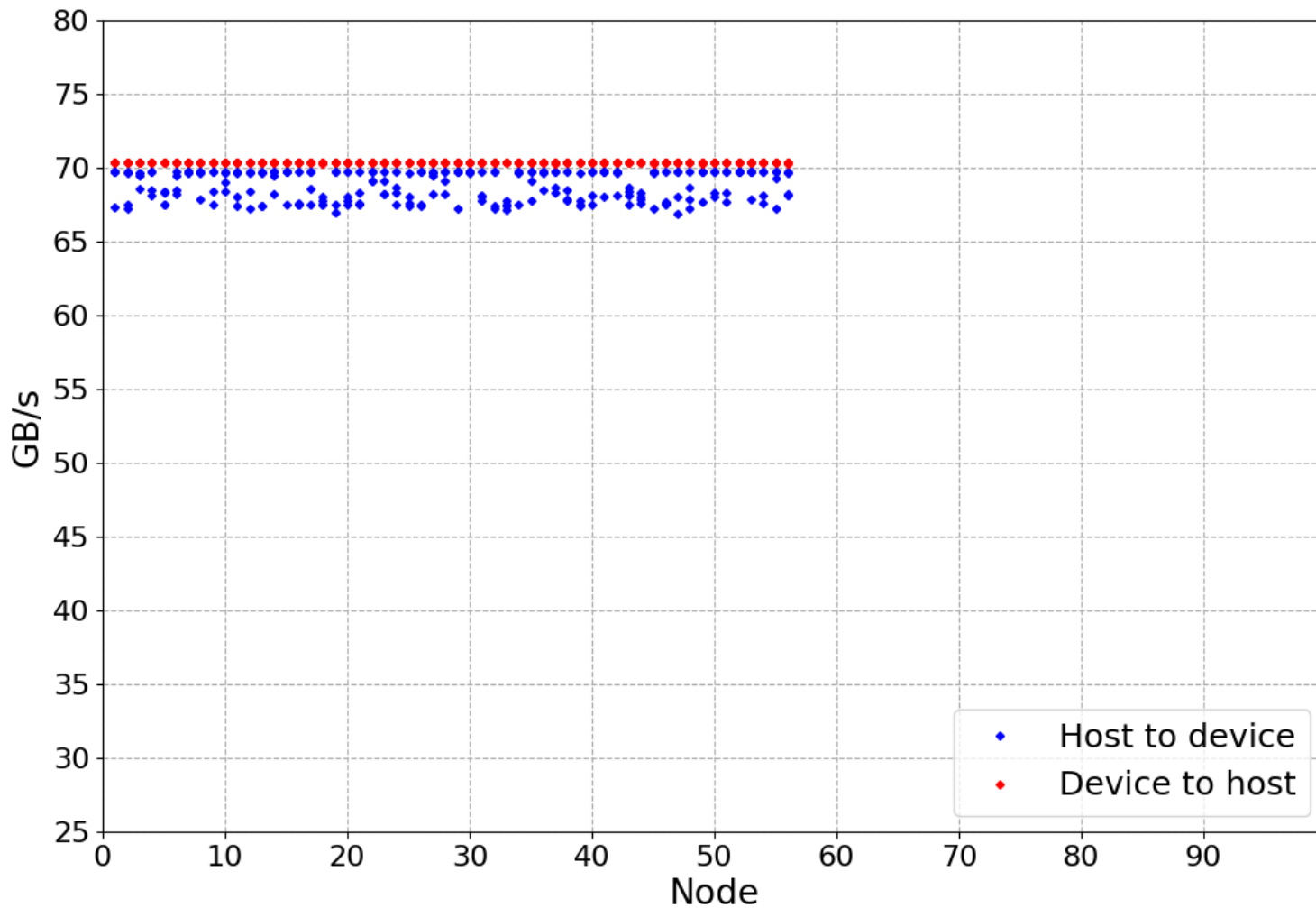
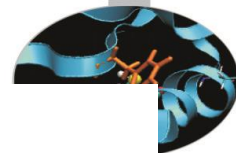
Stream-GPU



- Sanity threshold 750 Gb/s (no **slow GPUs found**)



Nvlink-GPU



P2P-GPU

